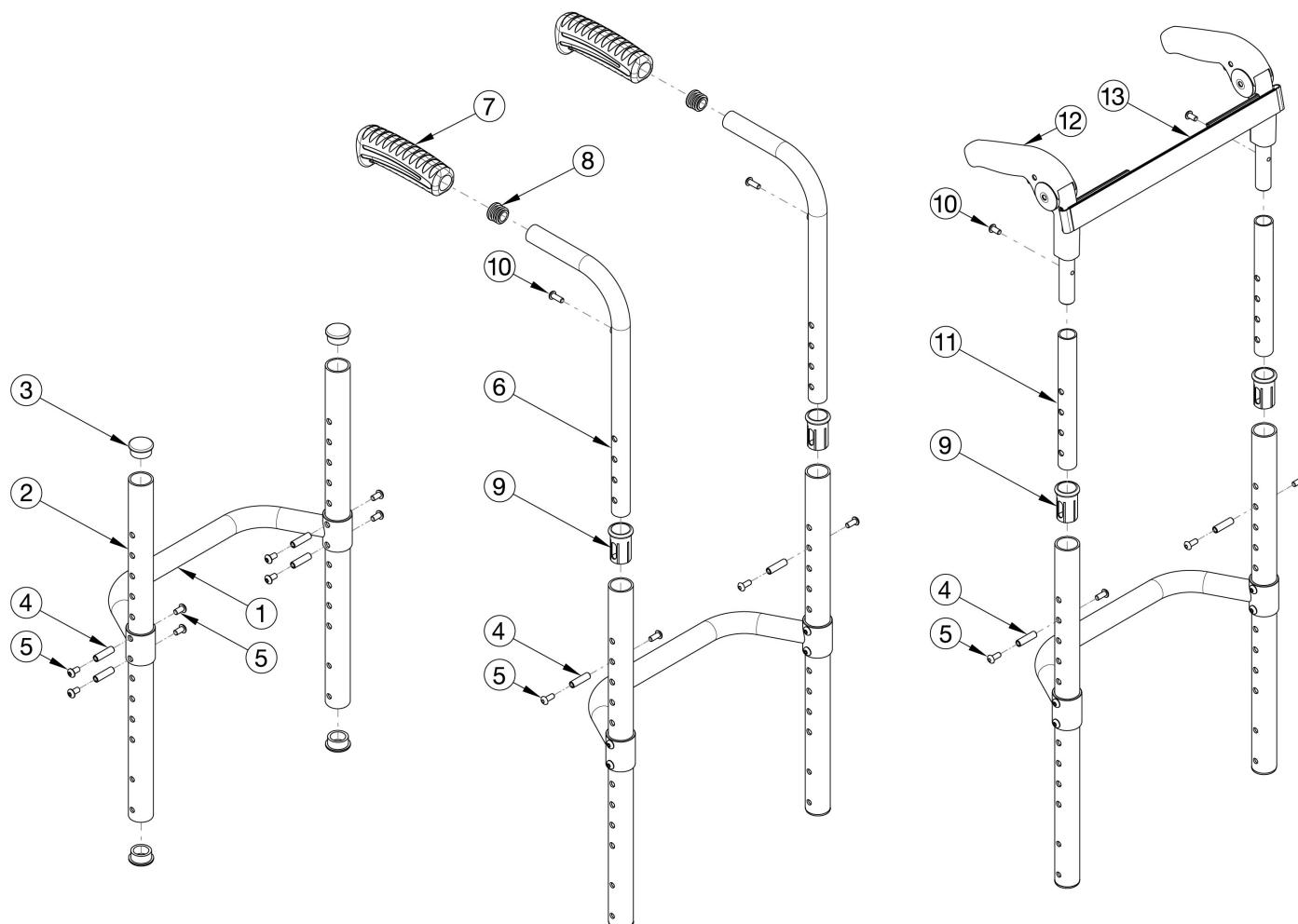


Clik / Rogue XP Fixed Height Back Post



For item 1, see Little Wave Clik Adjustable Height Rigidizer Bar page or Rogue XP Adjustable Height Rigidizer Bar page. If changing from another style backrest and the Drum Brake is present, a new Drum Brake Cable Kit may be required. If chair shipped after 7/3/2025 and Rigidizer Mounted Stroller Handles are present, please refer to quote the appropriate Stroller Handle Page for the Rigidizer.

Item Number	Part Number	Description	Quantity
2a, 3	110587	Fixed Height Back Post 7.438" with Tube End Plugs <i>Used with 9" back height with omit push handles</i>	1
2b, 3	110588	Fixed Height Back Post 8.438" with Tube End Plugs <i>Used with 10" back height with omit push handles</i>	1
2c, 3	110589	Fixed Height Back Post 9.438" with Tube End Plugs <i>Used with 11" back height with omit push handles</i>	1
2d, 3	110590	Fixed Height Back Post 10.438" with Tube End Plugs <i>Used with 12" back height with omit push handles</i>	1

Item Number	Part Number	Description	Quantity
2e, 3	110591	Fixed Height Back Post 11.438" with Tube End Plugs <i>Used with 13" back height with omit push handles</i>	1
2f, 3	110592	Fixed Height Back Post 12.438" with Tube End Plugs <i>Used with 14" back height with omit push handles</i>	1
2g, 3	110593	Fixed Height Back Post 13.438" with Tube End Plugs <i>Used with 15" back height with omit push handles</i>	1
2h, 3	110594	Fixed Height Back Post 14.438" with Tube End Plugs <i>Used with 16" back height with omit push handles</i>	1
2i, 3	110595	Fixed Height Back Post 15.438" with Tube End Plugs <i>Used with 17" back height with omit push handles</i>	1
2j, 3	110596	Fixed Height Back Post 16.438" with Tube End Plugs <i>Used with 18" back height with omit push handles</i>	1
2k, 3, 9	110597	Fixed Height Back Post 5.438" with Tube End Plug and Sleeve <i>Used with 10" back height with standard or low profile push handles</i>	1
2l, 3, 9	110598	Fixed Height Back Post 6.438" with Tube End Plug and Sleeve <i>Used with 11" back height with standard or low profile push handles or 12" - 13" back heights with fold down push handles</i>	1
2a, 3, 9	110599	Fixed Height Back Post 7.438" with Tube End Plug and Sleeve <i>Used with 12" back height with standard or low profile push handles or 14" back height with fold down push handles</i>	1
2b, 3, 9	110600	Fixed Height Back Post 8.438" with Tube End Plug and Sleeve <i>Used with 13" back height with standard or low profile push handles or 15" back height with fold down push handles</i>	1
2c, 3, 9	110601	Fixed Height Back Post 9.438" with Tube End Plug and Sleeve <i>Used with 14" back height with standard or low profile push handles or 16" back height with fold down push handles</i>	1
2d, 3, 9	110602	Fixed Height Back Post 10.438" with Tube End Plug and Sleeve <i>Used with 17" back height with fold down push handles</i>	1
2e, 3, 9	110603	Fixed Height Back Post 11.438" with Tube End Plug and Sleeve <i>Used with 15" back height with standard or low profile push handles or 18" back height with fold down push handles</i>	1
2f, 3, 9	110604	Fixed Height Back Post 12.438" with Tube End Plug and Sleeve <i>Used with 16" back height with standard or low profile push handles</i>	1
2g, 3, 9	110605	Fixed Height Back Post 13.438" with Tube End Plug and Sleeve <i>Used with 17" back height with standard or low profile push handles</i>	1
2h, 3, 9	110606	Fixed Height Back Post 14.438" with Tube End Plug and Sleeve	1

Item Number	Part Number	Description	Quantity
		<i>Used with 18" back height with standard or low profile push handles</i>	
3	100804	Tube End Plug 1"	4
4	000073	M5 x 24 Threaded Barrel	4
5	103524	M5 x 10 BTN SHCS BLK ZN	8
6a, 7a, 8	110584	Standard Push Handle Assembly, 10" Back Height <i>Used with 10" back height and drum brake is not present</i>	1
6b, 7a, 8	502602	Standard Push Handle Assembly, Short <i>Used with 11" - 18" back heights and drum brake is not present</i>	1
6e, 7a, 8	113221	Backtube w/ Push Handle Short with Backcane Extension, Drum Brake, Rigid <i>Used when drum brake is present. To view the backcane extension included in this kit, see Rogue XP / Klik / Little Wave XP Drum Brake page.</i>	1
6c, 7b, 8	125239	Low Profile Push Handle Short Rigid <i>Used with 10"-18" back height. Replaced part 002758</i>	1
7a	109432	Ergo Push Handle Grip 3/4" Standard with Instruction	1
7b	109430	Ergo Push Handle Grip 3/4" Low Profile with Instruction	1
8	100638	Tube End Plug 3/4"	2
9	000034	Sleeve 3/4" x 1 1/2"	2
10	100734	M5 x 16 PHMS ZC <i>Used to mount back upholstery and/or Fold Down Push Handle</i>	2
5, 10, 11a, 12	110586	Fixed Height Fold Down Push Handle Assembly, 12" Back Height <i>Used with 12" back height</i>	1
5, 10, 11b, 12	502603	Fixed Height Fold Down Push Handle Assembly, 13" - 18" Back Height <i>Used with 13" - 18" back heights</i>	1
13a	001748	Tension Strap Folding Handle 9-11 Wide	1
13b	001749	Tension Strap Folding Handle 12-13 Wide	1
13c	001750	Tension Strap Folding Handle 14-15 Wide	1
13d	001751	Tension Strap Folding Handle 16-17 Wide	1
13e	001752	Tension Strap Folding Handle 18-19 Wide	1