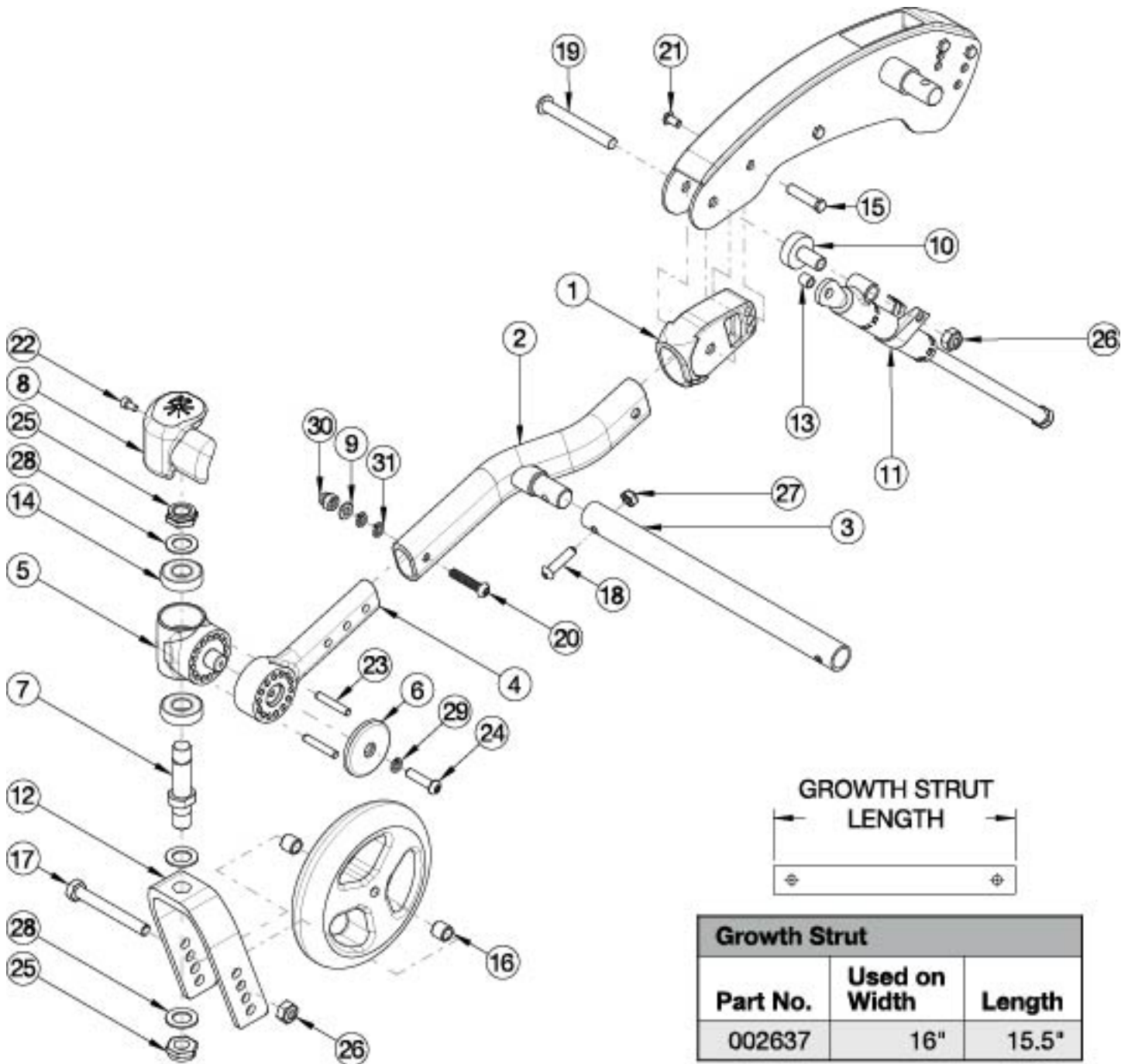


Flip for Leckey Caster Arm



Item Number	Part Number	Description	Quantity
10, 11a, 13, 19, 26	503213	Mechlock Replacement Kit, 45° Right	1
10, 11b, 13, 19, 26	503214	Mechlock Replacement Kit, 45° Left	1
10, 11a, 11b, 13, 19, 26	502797	Mechlock Replacement Kit, 45° PAIR FLIP	1
16a, 17a, 26	502653	Caster Attachment Hardware Kit CAT/FCS	1

Item Number	Part Number	Description	Quantity
16b, 17b, 26	502654	Caster Attachment Hardware Kit for 6" and 7" Wide Fork, CAT/FCS	1
5, 14	502801	Caster Barrel with bearings FLIP	1
7, 12a, 25, 28	502803	Fork Assembly 6" FLIP	1
7, 12b, 25, 28	502804	Fork Assembly 6" Wide FLIP	1
7, 12c, 25, 28	502805	Fork Assembly 7" FLIP	1
1, 2, 4-6, 8a, 9, 14, 15, 18-24, 26, 27, 29-31	502799_ _ _	Caster Arm Assembly, Right	1
1, 2, 4-6, 8b, 9, 14, 15, 18-24, 26, 27, 29-31	502800_ _ _	Caster Arm Assembly, Left	1
1, 2	503673_ _ _	Front Frame Tube Weldment w/Adjuster, Flip	1
3	002637	Frame Growth Strut 15.5"	1
4	122586	Caster Arm	1
6	122588	Caster Arm Cover	1
7	501208	Caster Stem, Ped Tilt	1
8a	002651	Wear Pad, Caster, Right	1
8b	002652	Wear Pad, Caster, Left	1
9	100746	M6 Flat Washer Blk Zn <i>Not used if transit is present</i>	1
10	001865	Spacer, Mechlock	1
11a	001861	Mechlock, 158mm, Right	1
11b	001862	Mechlock, 158mm, Left	1
12a	501210	Caster Fork 6" Flip	1
12b	501211	Caster Fork 6" Wide Flip	1
12c	501212	Caster Fork 7" Flip	1
12d	501213	Caster Fork 7" Wide Flip	1
13	001156	Pivot Bushing Tilt	2
15	000987	Threaded Fastener	1
16a	100792	Caster Spacer D8 x D12 x 10mm / Close Mount Handrim Spacer <i>Used with all casters except 6x2</i>	2
16b	001246	Caster Spacer Black 6 x 2 Poly .472ODX.319IDX.370LG	2

Item Number	Part Number	Description	Quantity
		<i>Only used with 6" x 2" casters</i>	
17a	101829	M8 x 65 HHCS Blk Zn	1
17b	101831	M8 x 80 HHCS Blk Zn <i>Used with wide forks</i>	1
18	101593	M6 x 25 BTN SHCS BLKZC	1
19	102797	M8 x 65, BHCS, Blk Zn	1
20a	102625	M6 X 30 BHCS BLK ZC <i>Used if transit is not present</i>	1
20b	101733	M6 x 35 CLS10.9 DIN7991 FSHCS BLKZC <i>Used if transit is present</i>	1
21	100669	M5 x 10 BTN SHCS BLKZC w/Patch	1
22	102800	M4 x 8mm SHCS Blk Zn	1
23	122589	Pin, Dowel, M5 X 30, DIN6325	2
24	115573	M6 x 25, BHCS, CLS 10.9, NYL, BLZ	1
25	100529	M12 x 1.25mm Lock Nut Black	2
26	100659	M8 Nylock Nut Blk Zn	2
27	100658	M6 Nylock Nut Blk Zn	1
28	100682	Washer 1/2" .518 x .875 x .047 F/W Black Zinc	3
29	102810	M6 Lockwasher, Hi-Collar, ZC	1
30	100558	M6 Nyl Ins Domed Cap L/N Zc	1
31	102810	M6 Lockwasher, Hi-Collar, ZC <i>Not used if transit is present</i>	2
	002086	Spacer, .38ODx.24IDx.31LG <i>Used if transit is present - replaces callouts 9 and 31. See Flip for x:panda Transit page.</i>	1

Matte Finish	
Code	Color Name
CGM	Charcoal Gray
EGM	Emerald Green
GGM	Graphite Gray*
IBM	Iridescent Burgundy
INM	Iridescent Navy
AGM	Military Green**
RRM	Retro Red
RBM	Royal Blue
SBM	Shadow Black
SWM	Smooth White

* Discontinued Color

** Formerly called Army Green

Gloss Finish	
Code	Color Name
BLK	Black
BLU	Blue
SKY	Blue Skies
BRO	Bright Orange*
PNK	Bubblegum Pink
BUR	Burgundy*
CBL	Candy Blue
PUR	Candy Purple
RED	Candy Red
COP	Copper
DPR	Deep Purple*
EBL	Electric Blue*
GRN	Forest Green*
FUS	Fuchsia*
GSM	Granny Smith
MTF	Metallic Fuchsia
MOR	Metallic Orange
ORG	Orange*
SAP	Sapphire*
SIL	Silver
TEA	Teal
YLW	Yellow
FLM	Graphic Image Transfer