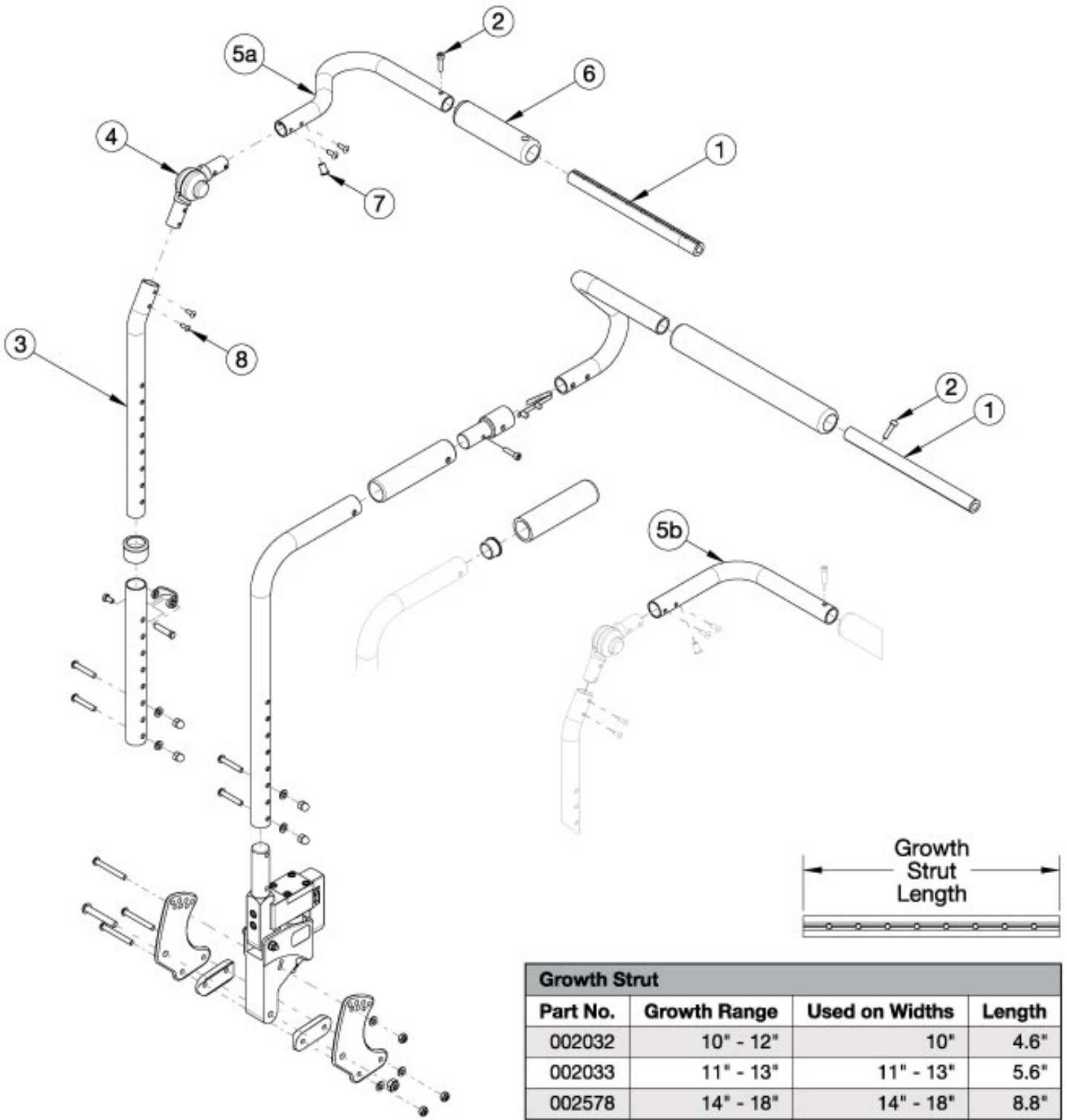


Flip Rocker Back - Growth



Growth Strut			
Part No.	Growth Range	Used on Widths	Length
002032	10" - 12"	10"	4.6"
002033	11" - 13"	11" - 13"	5.6"
002578	14" - 18"	14" - 18"	8.8"

Has your width changed? Will the push handle (#5) and growth strut accommodate your new width? If no, please select the appropriate upper back tube assemblies and growth strut.

Item Number	Part Number	Description	Quantity
1a	002032	Growth Strut, Stroller, 10-12 <i>Used on 10" chair width</i>	1
1b	002033	Growth Strut, Stroller, 11-13 <i>Used on 11" - 13" chair widths</i>	1
1c	002578	Growth Strut, Stroller, Short <i>Used on 14" - 18" chair widths</i>	1
2	101843	M5 x 20 SHCS Blk Zn	2
3a, 4, 5a, 6, 7, 8	504360	Upper Back Tube Assembly Height Adj, Right Flip <i>Used on 10" - 13" chair widths</i>	1
3b, 4, 5a, 6, 7, 8	504361	Upper Back Tube Assembly Height Adj, Left Flip <i>Used on 10" - 13" chair widths</i>	1
3a, 4, 5b, 6, 7, 8	502665	Upper Back Tube Assembly Height Adj, Right Focus/Flip <i>Used on 14" - 18" wide with serial numbers prior to FLP010784 and serial numbers starting with FLP011080</i>	1
3b, 4, 5b, 6, 7, 8	502666	Upper Back Tube Assembly Height Adj, Left Focus/Flip <i>Used on 14" - 18" wide with serial numbers prior to FLP010784 and serial numbers starting with FLP011080</i>	1