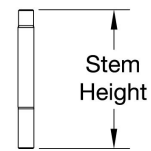
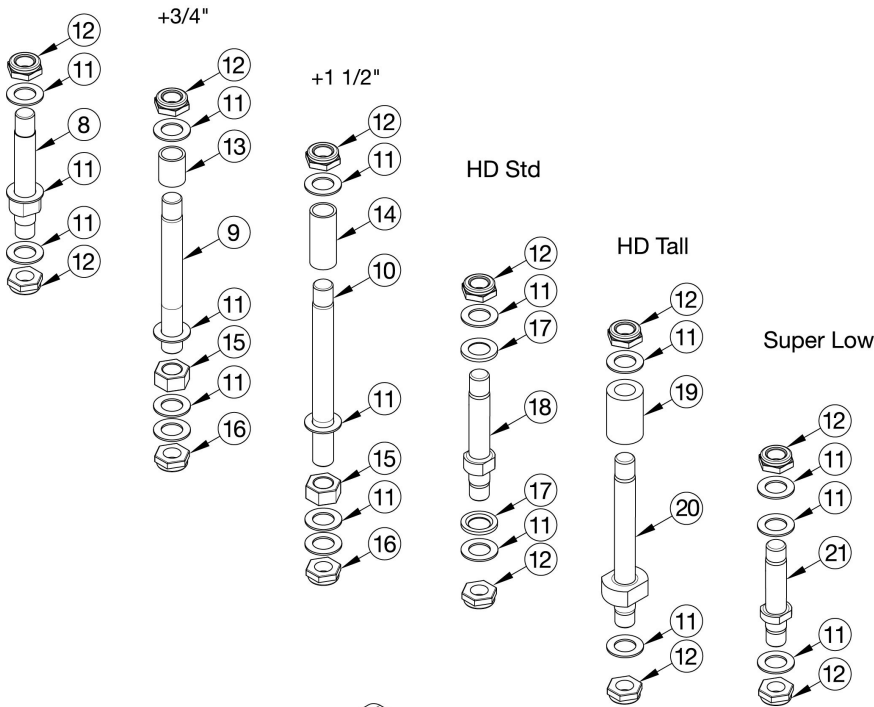
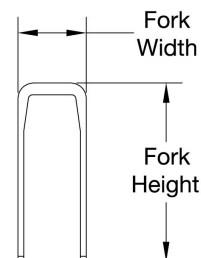
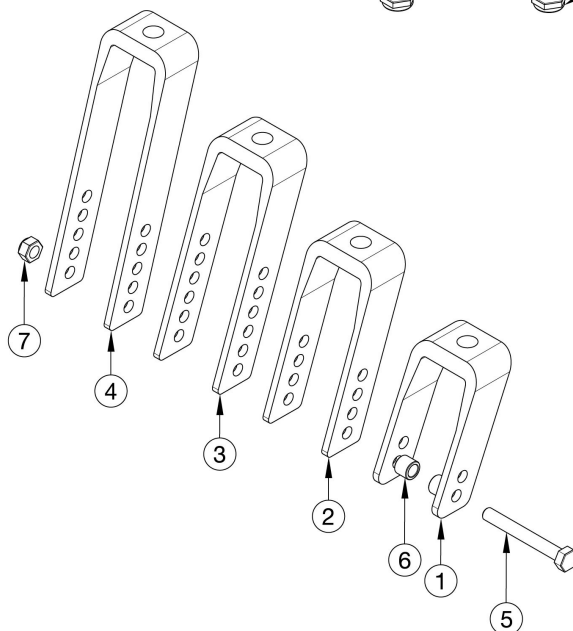


Catalyst E Caster Forks and Stems

Std



| | |
|-----------|------|
| Std | 3.5" |
| + 3/4" | 4.4" |
| + 1 1/2" | 5.1" |
| HD Std | 4.4" |
| HD Tall | 4.8" |
| Super Low | 2.8" |



| Fork | Height | Width |
|---------|--------|-------|
| 4" Std | 3.6" | 2.2" |
| 5" Std | 4.6" | 2.2" |
| 6" Std | 5.6" | 2.2" |
| 6" Wide | 5.8" | 2.9" |
| 7" Std | 6.9" | 2.2" |
| 7" Wide | 7.0" | 2.9" |

Reference order form for detailed front seat height matrix. If changing to 2" casters, wide forks and hardware needed.

| Item Number | Part Number | Description | Quantity |
|------------------------|-------------|---------------------------------|----------|
| 8, 11, 12 | 500866 | Std Caster Stem Assembly CAT | 1 |
| 9, 11, 12, 13, 15, 16 | 500001 | +3/4 Caster Stem Assembly CAT | 1 |
| 10, 11, 12, 14, 15, 16 | 500002 | +1 1/2 Caster Stem Assembly CAT | 1 |

| Item Number | Part Number | Description | Quantity |
|----------------------------|-------------|---|----------|
| 11, 12, 17, 18 | 115805 | HD Std Caster Stem Assembly | 1 |
| 11, 12, 19, 20 | 115806 | HD Tall Caster Stem Assembly | 1 |
| 11, 12, 21 | 115825 | Super Low Caster Stem Assembly | 1 |
| 1a, 8, 11, 12 | 500509 | Fork Assembly, Black, 4" Std Stem CAT | 1 |
| 1a, 9, 11, 12, 13, 15, 16 | 500510 | Fork Assembly, Black, 4" +3/4" Stem CAT | 1 |
| 1a, 10, 11, 12, 14, 15, 16 | 500004 | Fork Assembly, Black, 4" +1 1/2" Stem CAT | 1 |
| 1a, 11, 12, 17, 18 | 115807 | Fork Assembly, Black, 4" HD Std Stem | 1 |
| 1a, 11, 12, 19, 20 | 115808 | Fork Assembly, Black, 4" HD Tall Stem | 1 |
| 1a, 11, 12, 21 | 115826 | Fork Assembly, Black, 4" Super Low Stem | 1 |
| 2a, 8, 11, 12 | 500511 | Fork Assembly, Black, 5" Std Stem CAT | 1 |
| 2a, 9, 11, 12, 13, 15, 16 | 500005 | Fork Assembly, Black, 5" +3/4" Stem CAT | 1 |
| 2a, 10, 11, 12, 14, 15, 16 | 500512 | Fork Assembly, Black, 5" +1 1/2" Stem CAT | 1 |
| 2a, 11, 12, 17, 18 | 115809 | Fork Assembly, Black, 5" HD Std Stem | 1 |
| 2a, 11, 12, 19, 20 | 115810 | Fork Assembly, Black, 5" HD Tall Stem | 1 |
| 2a, 11, 12, 21 | 115827 | Fork Assembly, Black, 5" Super Low Stem | 1 |
| 3a, 8, 11, 12 | 500006 | Fork Assembly, Black, 6" Std Stem CAT | 1 |
| 3a, 9, 11, 12, 13, 15, 16 | 500513 | Fork Assembly, Black, 6" +3/4" Stem CAT | 1 |
| 3a, 10, 11, 12, 14, 15, 16 | 500514 | Fork Assembly, Black, 6" +1 1/2" Stem CAT | 1 |
| 3a, 11, 12, 17, 18 | 115811 | Fork Assembly, Black, 6" HD Std Stem | 1 |
| 3a, 11, 12, 19, 20 | 115812 | Fork Assembly, Black, 6" HD Tall Stem | 1 |
| 3a, 11, 12, 21 | 115828 | Fork Assembly, Black, 6" Super Low Stem | 1 |
| 4a, 8, 11, 12 | 500007 | Fork Assembly, Black, 7" Std Stem CAT | 1 |
| 4a, 9, 11, 12, 13, 15, 16 | 500515 | Fork Assembly, Black, 7" +3/4" Stem CAT | 1 |
| 4a, 10, 11, 12, 14, 15, 16 | 500516 | Fork Assembly, Black, 7" +1 1/2" Stem CAT | 1 |
| 4a, 11, 12, 17, 18 | 115815 | Fork Assembly, Black, 7" HD Std Stem | 1 |
| 4a, 11, 12, 19, 20 | 115816 | Fork Assembly, Black, 7" HD Tall Stem | 1 |
| 4a, 11, 12, 21 | 115829 | Fork Assembly, Black, 7" Super Low Stem | 1 |

| Item Number | Part Number | Description | Quantity |
|-------------------------------|-------------|--|----------|
| 3b, 8, 11, 12 | 501263 | Fork Assembly 6" Wide Std Stem CAT <i>Only used with 2" wide casters</i> | 1 |
| 3b, 9, 11, 12, 13, 15, 16 | 501416 | Fork Assembly 6" Wide +3/4" Stem CAT <i>Only used with 2" wide casters</i> | 1 |
| 3b, 10, 11, 12, 14, 15, 16 | 501417 | Fork Assembly 6" Wide +1 1/2" Stem CAT <i>Only used with 2" wide casters</i> | 1 |
| 3b, 11, 12, 17, 18 | 115813 | Fork Assembly, Black, 6" Wide HD Std Stem <i>Only used with 2" wide casters</i> | 1 |
| 3b, 11, 12, 19, 20 | 115814 | Fork Assembly, Black, 6" Wide HD Tall Stem <i>Only used with 2" wide casters</i> | 1 |
| 4b, 8, 11, 12 | 501264 | Fork Assembly 7" Wide Std Stem CAT <i>Only used with 2" wide casters</i> | 1 |
| 4b, 9, 11, 12, 13, 15, 16 | 501418 | Fork Assembly 7" Wide +3/4" Stem CAT <i>Only used with 2" wide casters</i> | 1 |
| 4b, 10, 11, 12, 14, 15, 16 | 501419 | Fork Assembly 7" Wide +1 1/2" Stem CAT <i>Only used with 2" wide casters</i> | 1 |
| 4b, 11, 12, 17, 18 | 115817 | Fork Assembly, Black, 7" Wide HD Std Stem | 1 |
| 4b, 11, 12, 19, 20 | 115818 | Fork Assembly, Black, 7" Wide HD Tall Stem | 1 |
| 1a, 12, 16 | 503805 | Caster Fork, Black, 4" Catalyst | 1 |
| 2a, 12, 16 | 503806 | Caster Fork, Black, 5" Catalyst | 1 |
| 3a, 12, 16 | 503807 | Caster Fork, Black, 6" Catalyst | 1 |
| 3b, 12, 16 | 503808 | Caster Fork 6" Wide Catalyst <i>Only used with 2" wide casters</i> | 1 |
| 4a, 12, 16 | 503809 | Caster Fork, Black, 7" Catalyst | 1 |
| 4b, 12, 16 | 503810 | Caster Fork 7" Wide Catalyst <i>Only used with 2" wide casters</i> | 1 |
| 5a, 6a, 7 | 502653 | Caster Attachment Hardware Kit CAT/FCS | 1 |
| 5b, 6b, 7 | 502654 | Caster Attachment Hardware Kit for 6" and 7" Wide Fork, CAT/FCS | 1 |
| 5a | 101829 | M8 x 65 HHCS Blk Zn | 1 |
| 5b | 101831 | M8 x 80 HHCS Blk Zn <i>Only used with 2" wide casters</i> | 1 |
| 6a | 100792 | Caster Spacer D8 x D12 x 10mm / Close Mount Handrim Spacer <i>Used with all casters except 6x2 and 8x2</i> | 2 |

| Item Number | Part Number | Description | Quantity |
|-------------|-------------|---|----------|
| 6b | 001246 | Caster Spacer Black 6 x 2 Poly .472ODX.319IDX.370LG <i>Only used with 6" x 2" casters</i> | 2 |
| 7 | 100659 | M8 Nylock Nut Blk Zn | 1 |
| 8, 12 | 503813 | Fork Stem Standard Catalyst | 1 |
| 9, 16 | 503812 | Fork Stem 3/4" Catalyst | 1 |
| 10, 16 | 503811 | Fork Stem 1 1/2" Catalyst | 1 |
| 11 | 100682 | Washer 1/2" .518 x .875 x .047 F/W Black Zinc <i>Use quantity 3 with standard stem</i> | 4 |
| 12 | 100529 | M12 x 1.25mm Lock Nut Black <i>Use quantity 1 with 3/4" and 1 1/2" stems</i> | 2 |
| 13 | 000115 | Fork Stem Spacer 3/4" | 1 |
| 14 | 000114 | Fork Stem Spacer 1 1/2" CAT | 1 |
| 15 | 101869 | 1/2-20 G5 Hex Nut Hxfree Zc | 1 |
| 16 | 101459 | 1/2-20 NTE JAM NYL INS L/N BLK ZC | 1 |
| 17 | 002593 | Caster Stem Washer Heavy Duty | 1 |
| 18 | 002592 | Caster Stem Heavy Duty | 1 |
| 19 | 002476 | Spacer, 3/4" OD x 1/2" ID x 1.23 | 1 |
| 20 | 002477 | Caster Stem Tall, Adult Tilt / HD Catalyst | 1 |
| 21 | 111981 | Hemi Caster Housing Stem | 1 |