

EASYStand®

5000

Owner's Manual



Table of Contents

Introduction..... 1

Safety Precautions 2

Assembly3-15

Using Your EasyStand 16-19

Health Benefits 20

Parts & Options 21-40

User Log 41

Specifications 42

Limited Warranty..... 43

Introduction

Congratulations on your purchase of the EASYSTAND 5000 standing frame! We at Altimate Medical, Inc. have designed the EasyStand 5000 with your comfort and happiness in mind.

This manual is an integral part of your standing system and should be read completely and thoroughly by anyone that will be operating the unit.

This will ensure that the EasyStand 5000 is assembled properly and then used in the most beneficial manner.

AMI recommends that an attendant be present when the EasyStand 5000 is being used.

Should any problem arise that you cannot solve by reading this manual, please contact your local dealer or call Altimate Medical, Inc. at 1-800-342-8968 or 507-697-6393.

It is important and necessary that you inspect your EasyStand 5000 periodically to assure that it is in safe operating condition. Minor adjustments can be made by the operator. However, replacement of worn parts, major adjustments, or any other important corrections should be handled by an authorized dealer or service center. Only Altimate Medical, Inc. approved replacement parts should be used to ensure safety and performance.

The EasyStand 5000 should not be used by any individual with paralysis of either the upper and/or lower body that has been confined to a bed or wheelchair for an extended period of time without first consulting a qualified physician.

Failure to consult a qualified physician prior to using the EasyStand 5000 could lead to severe medical problems. We recommend that a good standing program be established and supervised by a qualified registered physical therapist.

Date Purchased _____ Serial # _____

Safety Precautions

- The EasyStand 5000 is designed to accommodate *most* individuals from 5'- 6'5" (152cm-195cm) and up to 280 lbs (127kg). If you do not meet these specifications and have not been properly fit by a qualified therapist or physician, Altimate Medical Inc. does not recommend that you use the EasyStand 5000.
- Altimate Medical Inc. recommends that you consult with your therapist or physician prior to starting a standing program.
- Check your EasyStand periodically to make sure that all nuts, bolts and adjustable parts are tightened securely.
- Never reposition the foot holders while you are in the standing position. Consult with your therapist or doctor for proper foot placement and angle.
- If the unit was exposed to temperatures of less than 50°F (23.5°C), you must allow the unit to warm up to room temperature before use.
- Use body weight to lower the seat. Do not use excessive force.
- The EasyStand is for indoor use only.
- Violently thrusting backwards in the EasyStand may cause it to tip.
- If you ordered casters or the mobile option, you should always put the casters and/or wheels in the locked position before transferring into the EasyStand. Use these locks whenever you want to keep the EasyStand stationary.
- Do not use the mobile option on ramps or uneven floors.

#1 Depending on what base style you ordered you will have either level glides(standard), casters, or the mobile option. Turn the base over as shown and locate the enclosed tool package.

Many of the pictures in this manual show the optional ratchet handles. You may have the standard knobs.



#2 If you ordered the high back extension, the anti-tips must be installed with the rear level glides as shown.

Tighten securely.



#3 If you ordered level glides, turn the level glides into the threaded holes in the back of the base and tighten securely. Insert end caps



- #4** The front level glides (with adapters) must be tightened securely onto the frame as shown.



- #5** If you ordered the high back extension, the anti-tips must be installed with the rear casters as shown.

Tighten securely.



- #6** If you ordered the formed table and casters, thread the casters into the rear of the base and tighten securely.

Caution: The casters must be threaded all the way in.



#7 The front casters must be attached securely into the frame as shown. Thread the caster completely into the adapter with the enclosed wrench.



#8 If you ordered the mobile option, install the two casters into the back of the unit (*as in figure #5 or 6, page 4*) then install the drive wheels into the front.

Tighten securely.

If you ordered the Mobile Option refer to the assembly instructions you received.

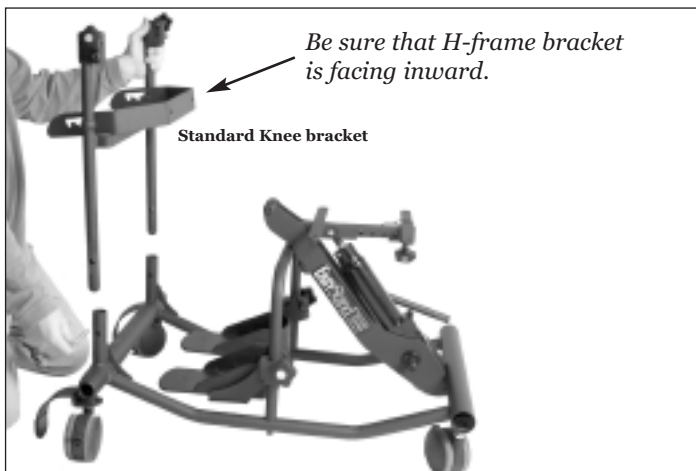


#9 If you ordered the optional table swing-away sleeve mount it before installing the table frame. It can be mounted on the right or left side.

Put the quick pin back into the other side. Only one quick pin will be used if you have the table swing-away sleeve option.



#10 With your unit in the upright position, remove the quick pins. Place H-frame into base with kneepad bracket facing inward. Replace quick pins.



#11 Attach the kneepad and tighten securely.

Caution: Keep kneepad in the lower position when not in use.



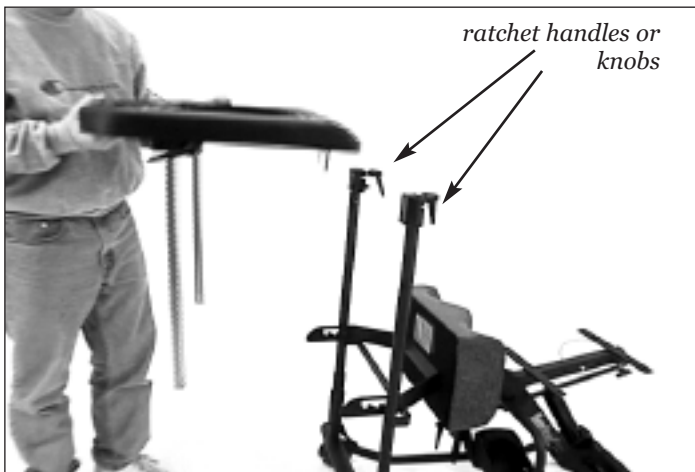
#12 If you ordered the independent adjustable kneepad, slide the notch onto the pegs of the lower table H-frame.

Note: Table H-frame must be installed properly for kneepad to function.

Caution: Keep kneepad in the lower position when not in use.



#13 To install the table, loosen the H-frame knobs slightly and be sure the front pad bracket faces toward the seat.



#14 Insert the table into the H-frame and push the spring button to continue installation. Tighten the knobs or the optional ratchet handles.

Note: Spring button indicates the highest allowable table adjustment. There is only one spring button.



#15 Attach the front pad and tighten securely.



#16 The actuator handle can be installed on the right or left side.



#17 Attach the actuator handle so that the handle is near vertical. Use the enclosed allen wrench and a multi-use wrench.

Tighten Securely.



#18 If you ordered the removable actuator handle it can be removed by loosening the knob as shown.



#19 To install the back option, loosen the quick adjust knob on the square tube. Press the spring button on the lower following arm and insert it into the round corresponding tube. Continue pressure until you hear the spring button "click".



#20 Slide the upper square back tube into the corresponding seat adjustment tube.

Depress the spring button to insert and continue until you here a "click".



#21 Be sure that the colors on the following arm and the seat adjustment tube are the same. If colors are not the same, damage will occur to the unit when raised to the standing position.

Tighten the quick adjust knob securely.



#22 To install the seat, first raise the seat by pumping the actuator handle.



#23 Optional hip guides must be installed with the seat. To make it easier to assemble, temporarily bolt the seat on one side only. Do not tighten at this time.



#24 The bolts for the seat are found in the seat.

Remove bolts and place the seat onto the frame with the narrow end toward the rear of the unit.

Tighten securely.



#25 Attach hip guide into remaining holes then remove temporary bolts and attach final hip guide.



#26 Lower the seat by applying weight and pulling back gently on the actuator handle.



#27 Attach the back and tighten securely with the enclosed allen wrench.



#28 If you ordered the high back extension, slide it into the back frame before installing the lower back. Now install the lower back pad with the attached bolts.

Tighten Securely.



#29 To adjust the footrests, loosen the quick adjust handles and pivot the foot rests forward, then tighten securely.



#30 For installation of the laterals you must either widen or remove the pad brackets for ease in installation.

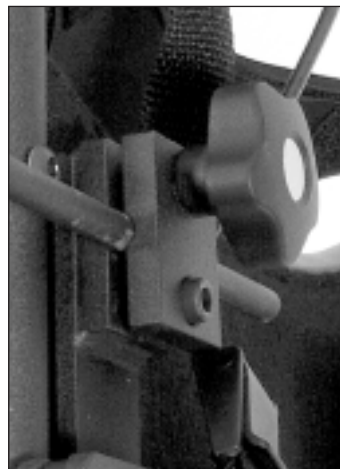
Note: The quick adjust knobs go to the top (see fig. #31).



#31 If you have the high back extension with laterals, install the high back onto the unit, then attach lower backpad and laterals as shown.

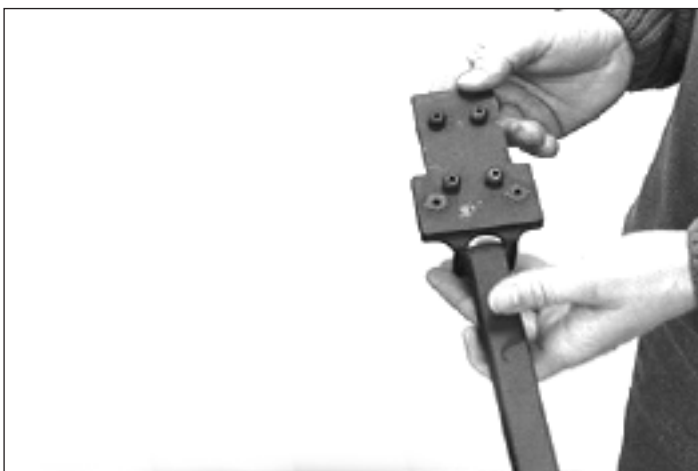
Tighten securely.

Caution: Lateral rod must extend through clamp as shown.

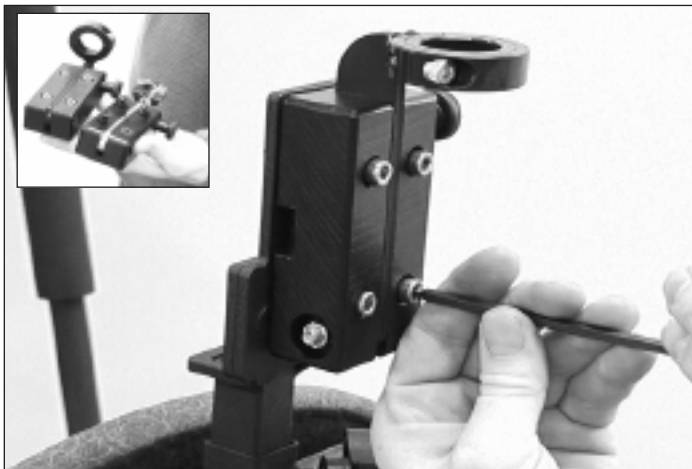


#32 The universal headrest receiver can be used with a variety of other manufacturers' headrests. Headrest receiver will snap down into maximum height position. Depress again to lower headrest.

Tighten quick adjust knob.



#33 If you are using it with the Whitmyer Pro receiver, Pro-MS, Pro-MD or the soft/plush series receiver #M1012, use the four bolts supplied by Whitmyer to attach your headrest.

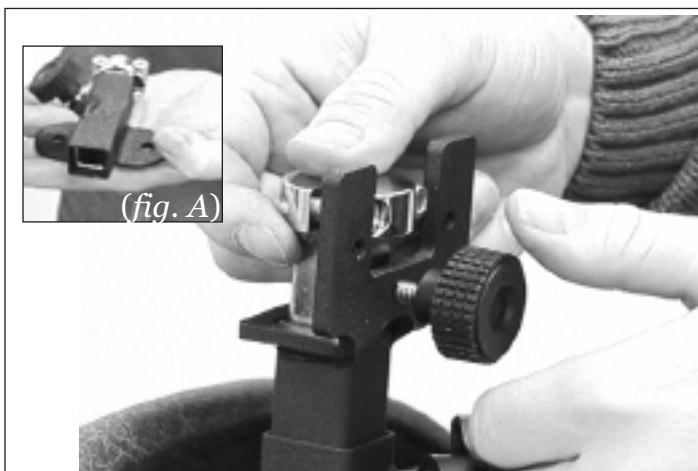


#34 For use with the Stealth®, Otto Bock™ or Whitmyer #M0012 detachable mount, you must remove the auxiliary mounting plate.



#35 If you are using the Whitmyer detachable mount (*fig. A*), remove the chrome insert and knob, then insert it into the universal headrest receiver as shown and secure with knob.

Note: If you do not have a knob supplied by Whitmyer, use the included buttonhead bolt.



#36 If you are using the Otto Bock™ or Stealth® headrest, use the two of the provided buttonhead bolts to fasten their hardware as shown.



Here is the 5000 Mobile shown with back option.



Here is the 5000 shown with casters, lateral supports, black molded table, standard kneepads, anti-tips, back option, high back and Roho® Seat.



Using your EasyStand

Adjusting

SEAT DEPTH/BACK ANGLE

- To adjust the seat depth, first loosen the quick adjust knob on seat tube. Then depress the spring and position the seat to the desired depth. Tighten the knob securely when desired adjustment is accomplished. You have seven seat depth options ranging from 18 to 24 inches. When adjusting the seat depth, it is important to have your knee as close to the seat pivot as possible for proper lift to the standing position.
- Position the back adjustment tube in the same color-coded setting as the seat depth adjustment. You have fifteen back depth adjustments ranging from 16 to 22 inches.

FOOT HOLDERS

- **Consult with your therapist or doctor for proper foot placement and angle.**
- Foot holders should be raised/lowered so that the knee is as close to the seat pivot as possible.
- Never reposition the foot holders while you are in the standing position.
- The foot holders can be independently adjusted in swivel, height, and pivot.
- To adjust the swivel or pivot of the foot holders, loosen the quick adjust handles on each foot holder clamp. When you find the desired foot position, tighten the handles securely.
- To adjust the height loosen the same quick adjust handle of the foot holder clamp. Loosen the factory adjusted bolt on the outside of each clamp only if necessary. Now the clamps will slide up with 9" of adjustment. Tighten securely.

MOBILE OPTION

- **Do not use the mobile option on ramps or uneven surfaces or outdoors.**
- Before transferring into the EasyStand with the Mobile Option, make sure that the casters and the push rim locking mechanisms are in the locked position. Use these locks when ever you want to keep the EasyStand stationary.

KNEE PAD

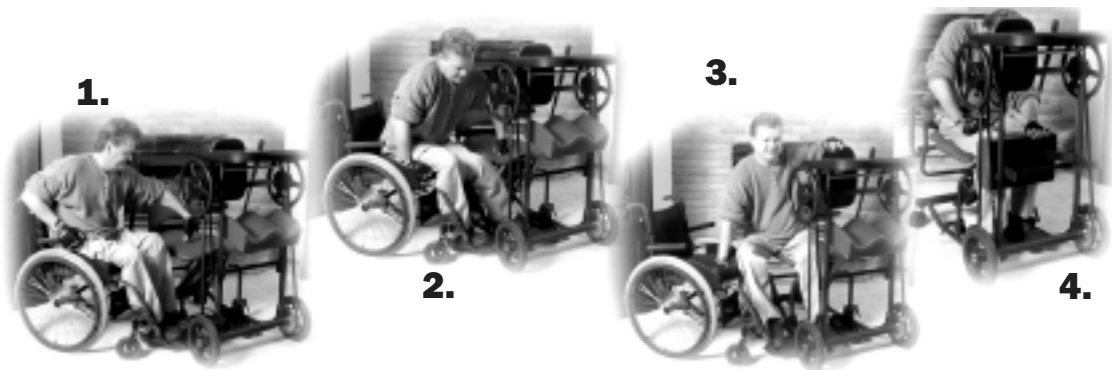
- The knee support should be snug when you are in the seated position. Adjust the foot holders so that the user's knees are as close to the seat pivot point as possible.
(If necessary, the knee pad can be inverted on the frame for further adjustment variations)

FRONT PAD

- When in the standing position, the front pad should support your upper body. Adjust the tray height and depth so you feel comfortable. The front pad can also be independently adjusted for proper height and it can be inverted as the adjustment holes are offset allowing further adjustment variations.

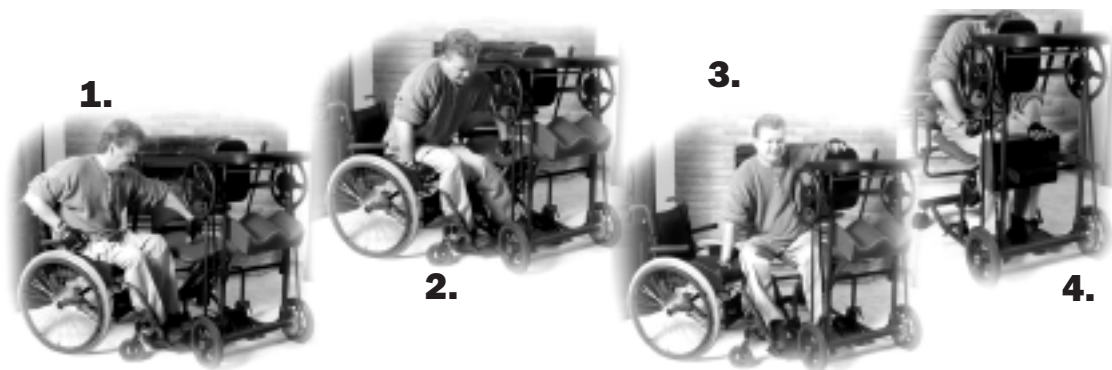
Transferring

- **For proper transfer techniques, please seek professional advice from your therapist or doctor before transferring.**
- Always lock the wheel locks on your wheelchair and all four casters on the EasyStand before transferring.
- If you do not need assistance in transferring, position your wheelchair next to the EasyStand and remove the side support. Make sure that the knee support is flipped up to allow you to position your feet. Complete your transfer and position your feet in the footplates. Secure the foot straps and reposition the knee and side supports.
- If required, many patient lifts can be used for transfers. Remove the front table assembly of the EasyStand and transfer in from the front or use the removable back option and transfer from the rear.
- To transfer with a sliding board, position your chair parallel to the EasyStand, remove the side support and flip the knee support back. Be sure that your wheel locks are locked. The front end of the EasyStand can be removed so an assistant can use proper body mechanics for a standing pivot or fully assisted sliding board transfer.
- When transferring out of the EasyStand, pump the seat up so that it is equal to or higher than the seat you are transferring back in to.



Transferring

- **For proper transfer techniques, please seek professional advice from your therapist or doctor before transferring.**
- Always lock the wheel locks on your wheelchair and all four casters on the EasyStand before transferring.
- If you do not need assistance in transferring, position your wheelchair next to the EasyStand and remove the side support. Make sure that the knee support is flipped up to allow you to position your feet. Complete your transfer and position your feet in the footplates. Secure the foot straps and reposition the knee and side supports.
- If required, many patient lifts can be used for transfers. Remove the front table assembly of the EasyStand and transfer in from the front or use the removable back option and transfer from the rear.
- To transfer with a sliding board, position your chair parallel to the EasyStand, remove the side support and flip the knee support back. Be sure that your wheel locks are locked. The front end of the EasyStand can be removed so an assistant can use proper body mechanics for a standing pivot or fully assisted sliding board transfer.
- When transferring out of the EasyStand, pump the seat up so that it is equal to or higher than the seat you are transferring back in to.



Maintenance

GENERAL

- Clean the EasyStand 5000 with a mild non-abrasive disinfectant or soap and water.
- Check your EasyStand periodically to make sure that all nuts, bolts and adjustable parts are tightened securely.

THE HYDRAULIC ACTUATOR

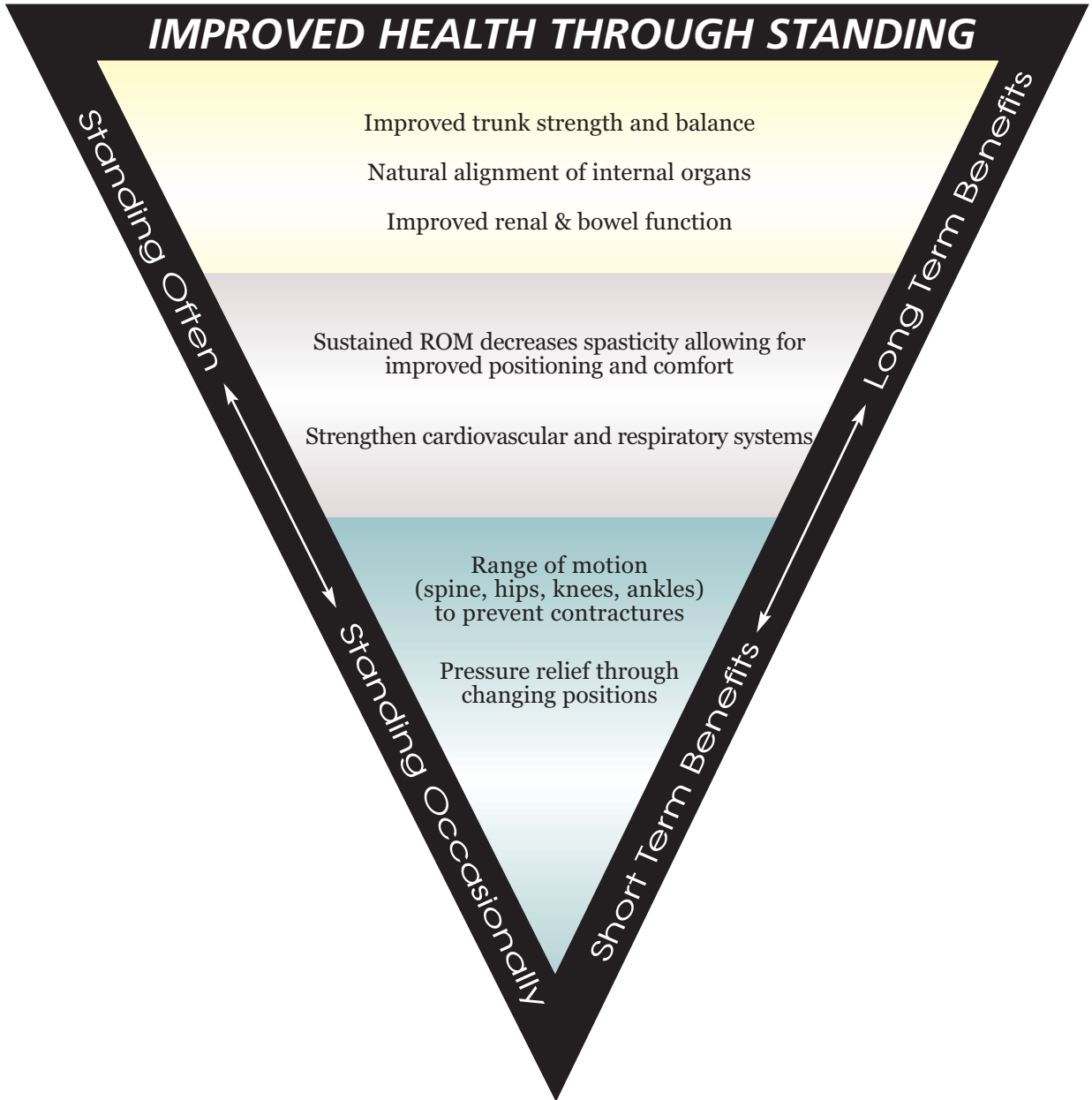
- An initial break-in period of approximately 50-100 full cycles is normal for the hydraulic unit. You may experience a squealing noise or a less-than-smooth forward stroke. The very close fit of its mating parts give each pump its own break-in “feel” and signature noise.
- If the pump is leaking oil, call your local AMI Dealer for a replacement. The serial number will be needed.
- Do not exert excessive force on the pump handle or use the pump handle to move your EasyStand around. This may cause damage to the pump handle and/or the pump mechanism and will void any warranty.
- User maintenance is not required or recommended on the hydraulic pump. Never apply lubricant, household oil, grease, or a similar product to any part of the unit. Some compounds may react with the seals used in the manufacture of this product. This may damage the unit and will void any warranty.
- Do not exceed the rated weight capacity of the equipment for which this hydraulic unit is used on (the weight limit for the EasyStand 5000 is 280 lbs).
- If your EasyStand was shipped to you during or exposed to a temperature of less than 50 degrees Fahrenheit, you must allow the hydraulic unit to warm up to room temperature before any use. Failure to follow this step could damage the unit and render it inoperable.
- It is sometimes not necessary to push the pump handle all the way back to lower the seat. If you have difficulty getting the seat to lower, try pushing the handle back into different positions.
- If the unit is in the standing position and unoccupied, it is necessary to apply pressure to the seat of the unit while pushing the pump handle back.

PURGING THE HYDRAULIC ACTUATOR

The hydraulic pump on your EasyStand has a high probability of getting air trapped in the internal workings of the unit. This is usually caused by in-transit handling and is quite normal. Please follow the simple steps below, as manual hydraulic systems may never operate properly unless the entrapped air is correctly purged. The unit must be at room temperature for this procedure.

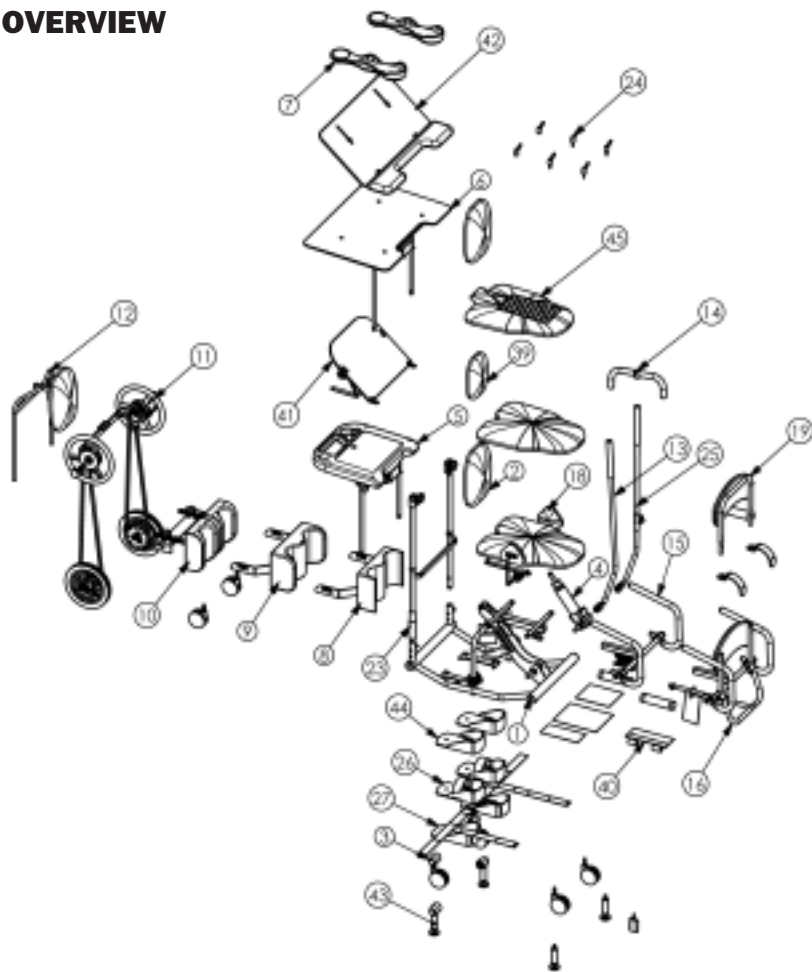
1. Slowly pump the handle until the full extension is reached.
2. Now continue pumping the handle slowly for an additional 10 strokes.
This will properly purge the system.

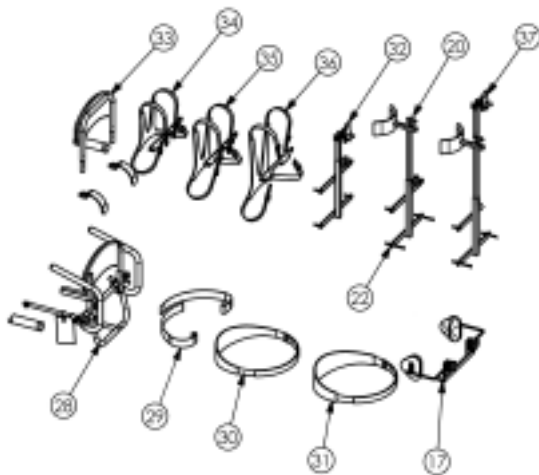
Health Benefits



EasyStand Parts Detail

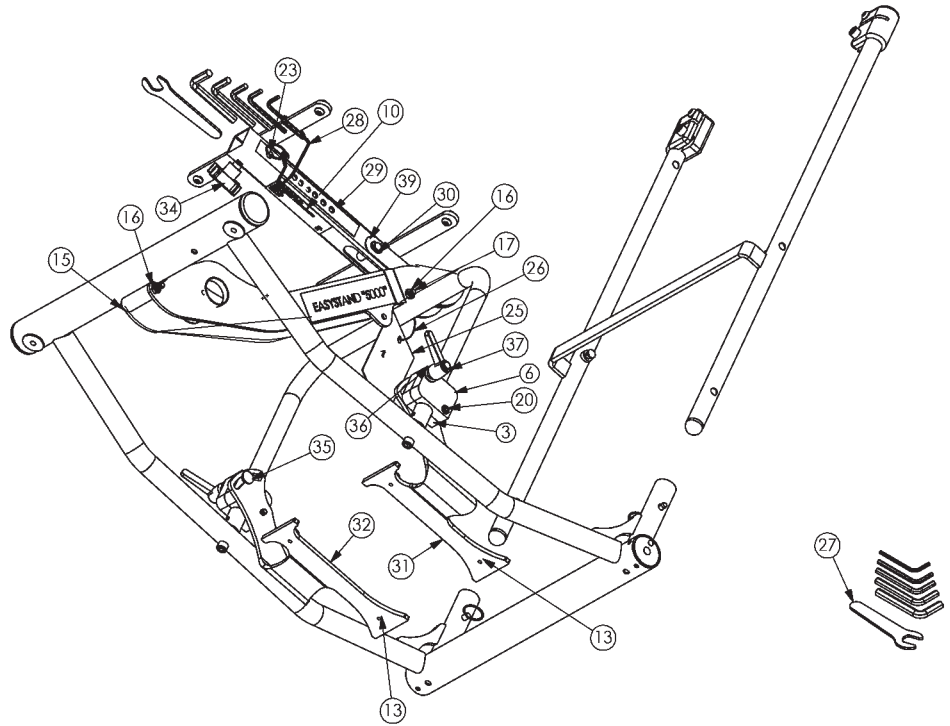
5000 OPTION OVERVIEW



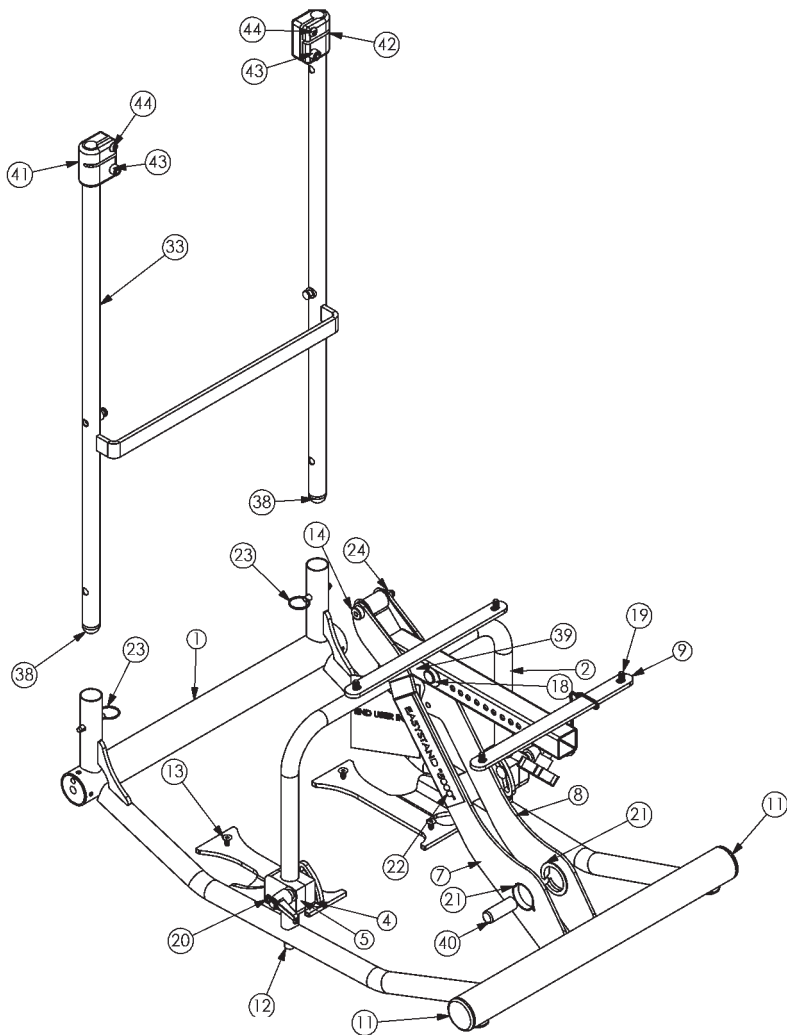


ITEM	PART NO.	DESCRIPTION
1	5000	EASYSTAND 5000
2	5140GG	LARGE GARPHITE GRAY 5000 UPHOLSTERY
3	5062	CASTER ASSEMBLY
4	10090	HYD CYL POWER PACKER MODEL
5	10600	BLACK MOLDED TABLE
6	5040	CLEAR TABLE OPTION
7	5030	ARM TROUGHS
8	10128SGG	CONSTRUCTED 3 POSITION KNEE SM/GRAPHITE GRAY
9	10128GG	3 POSITION KNEE LG/GRAPHITE GRAY
10	5026GG	INDEPENDENT ADJUSTABLE KNEE GRAPHITE GRAY
11	5200	MOBILE OPTION
12	5250GG	NO TABLE OPTION GRAPHITE GRAY
13	58483	PUMP HANDLE
14	5022	ACTUATOR HANDLE EXTENSION
15	58582	NO BACK OPTION
16	5100GG	BACK SUPPORT OPTION GRAPHITE
17	5036GG	LATERAL SUPPORT GRAPHITE GRAY
18	5038GG	HIP GUIDES GRAPHITE GRAY
19	5150GG	HIGH BACK GRAY W/CHEST STRAP
20	5032GG	HEAD SUPPORT GRAY
22	5035GG	COMBO 5032 & 5034 GARPHITE GRAY
23	5024	ES5000 TABLE SWING AWAY
24	5070	QUICK ADJ TABLE HANDLES
25	5020	REMOVEABLE ACTUATOR HANDLE
26	80634	5000 FOOT HOLDERS W/STRAPS
27	80616	SECURE FOOT STRAP OPTION 5000
28	5100RGG	REMOVEABLE BACK SUPPORT OPTION GRAPHITE GRAY
29	51500	STRAP SEAT BELT BLACK
30	51601	STRAP CHEST SMALL BLACK
31	51600	STRAP CHEST LG BLACK
32	80643	HIGH BACK UNIVERSAL HEAD SUPPORT OPTION
33	5150GG	HIGH BACK GRAPHITE GRAY
34	80631	SMALL CHEST VEST OPTION
35	80632	MEDIUM CHEST VEST OPTION
36	80633	LARGE CHEST VEST OPTION
37	80638GG	UNIVERSAL HEAD SUPPORT OPTION
39	5140SGG	SMALL GRAPHITE GRAY 5000 UPHOLSTERY
40	80809	POUCH TOOL
41	81011GG	TABLE TILT BLACK MOLDED GRAPHITE GRAY
42	80997GG	TABLE TILT 5000 GRAPHITE GRAY
43	10126	4 LEVEL GLIDES W/ADPTRS
44	80635	5000 FOOT HOLDERS
45	81019GG	LARGE ROHO GRAPHITE GRAY UPHOLSTRY

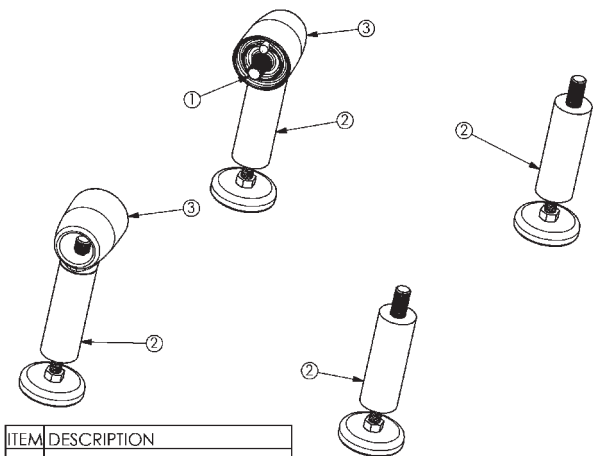
5000 BASIC FRAME



ITEM	DESCRIPTION	
1	WELDMENT BASE	23 PP .312D 1.500L
2	WELDMENT SEAT LOOP	24 PP NUT 3/8-16 NYL INS L/N
3	PT .750H 2.00W 2.50L	25 PP LABEL END USER INFO
4	PT .750H 2.00W 2.500L	26 PP SNAP TIE
5	PT .750H 2.00W 2.50L	27 TOOLKIT 7000-7500
6	PT .750H 2.00W 2.50L	28 PP LANYERD STRAP
7	PP .443H 4.75W 23.835L	29 PP LABEL BACK TUBE
8	PP .598H 4.75W 23.835L	30 PP E-RING ER-43
9	WELDMENT SEAT	31 PP 4.75H 4.718W 11.50L
10	PP SERIAL NO LABEL	32 PP 4.75H 4.718W 11.50L
11	PP CAP 2D 10-14GA BLK	33 WELDMENT LOWER TABLE H-FRAME
12	PP BOLT 3/8-16 X 2 SHCS	34 PP KNOB 5/16"-16 X 5/8 ZC 4 PT
13	PP BOLT 1/4-20 X 1/2 FSHCS	35 PP 3/8-16UNC X 2.50L CARRIAGE BOLT
14	PP BOLT 1/2 X 2 SHOULDER BOLT	36 PP WASHER 5/16 USS WASHER ZC
15	PP BOLT 5/16-18 X 3-1/4 SHCS	37 PP KNOB 3/8"-16 FEMALE QUICK ADJ.
16	PP NUT 5/16-18 JAM NYL INS L/N	38 PP CAP 1D 14-23 GA BLK BALL CAP
17	PP BOLT 5/16-18 X 2-1/2 SHCS	39 PP SEAT PIVOT GAURD
18	PP CLEVIS PIN .472" D X 1.655"L	40 PP CAP .625ID 2.00L BLK
19	PP BOLT 5/16-18 X 3/4 BTN SHCS	41 PP 1.375H 2.125W 2.50L
20	PP BOLT 5/16-18 X 1-3/4 SHCS	42 PP 1.375H 2.125W 2.50L
21	PP NYLINER #2717A	43 PP BOLT 3/8-16 X 1-1/4 SHCS
22	PP EASYSTAND 5000 LABEL	44 PP BOLT 5/16-18 X 1-1/4 BTN SHCS

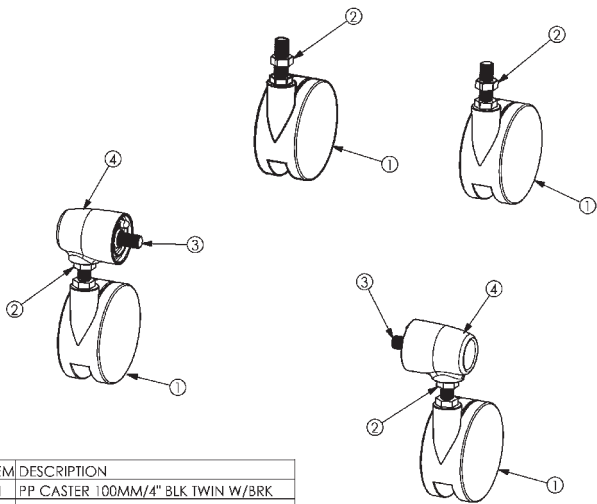


LEVEL GLIDES #10126



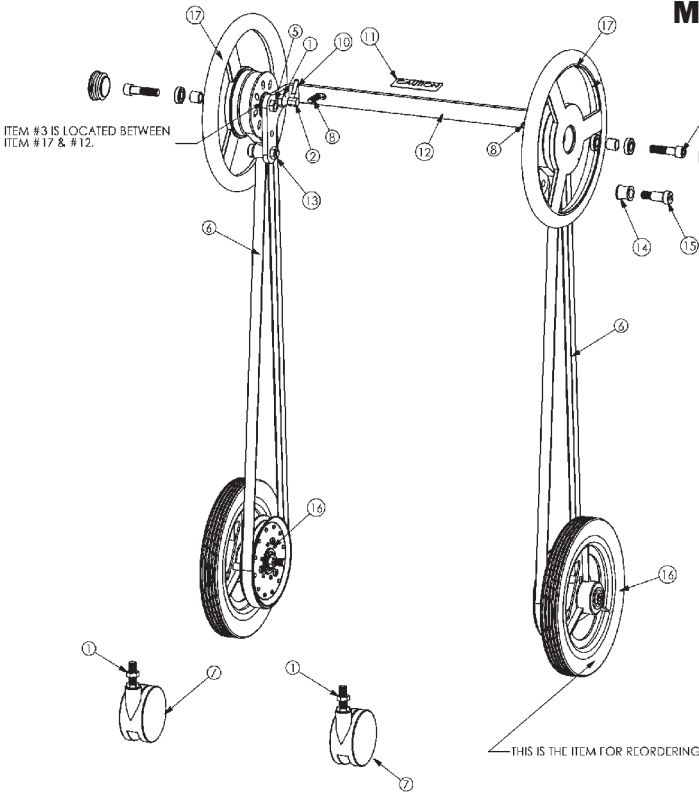
ITEM	DESCRIPTION
1	PP BOLT 1/2-20 X 1-1/4 SHCS
2	LEVEL GLIDE ASSEMBLY
3	PP 2.0D 2.5L

LOCKING CASTERS #5062



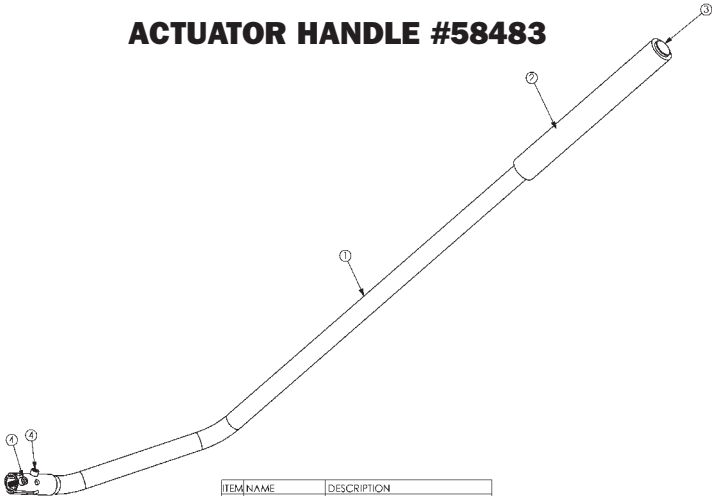
ITEM	DESCRIPTION
1	PP CASTER 100MM/4" BLK TWIN W/BRK
2	PP NUT 1/2-13 JAM ZC NUT
3	PP BOLT 1/2-20 X 1-1/4 SHCS
4	PP 2.0D 2.5L

MOBILE OPTION #5200



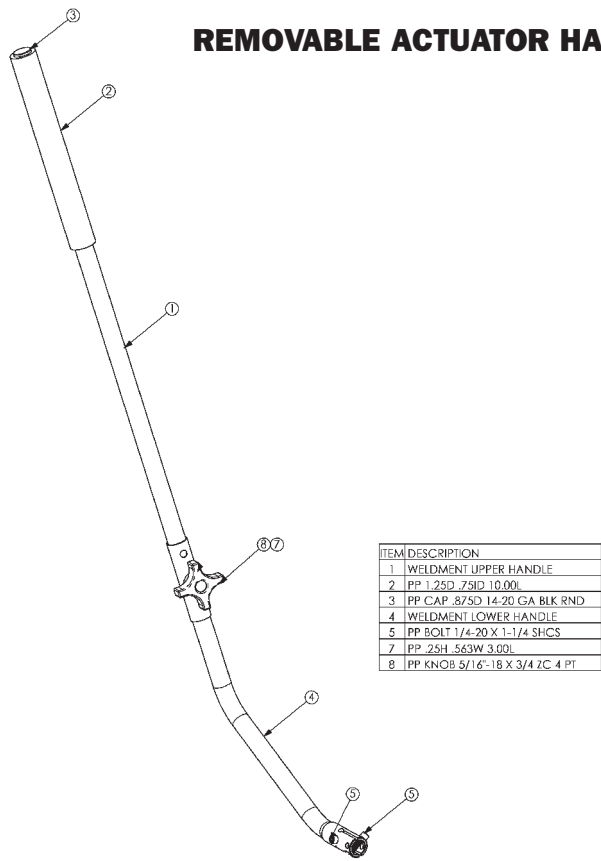
ITEM	DESCRIPTION
1	PP NUT 1/2-13 JAM ZC NUT
2	PP 1/2-13 LOCKING PLUNGER
3	PP BUSHING 1/2" X 7/8" X 18 GA
4	PP BOLT 1/2-20 X 2 SHCS
5	PP NUT 1/2-20 JAM NYL INS L/N
6	PP V-BELT BX-80
7	PP CASTER 100MM/4" BLK TWIN W/BRK
8	PP BOLT 3/8-16 X 1-3/4 SHCS
9	PP CAP 2D 10-14GA BLK
10	PP CAP .1875D 1.062L
11	PP LABEL 1.25W 3.50L CAUTION
12	PP .375H 4.875W 21.00L
13	PP NUT 1/2-13 JAM NYL INS L/N
14	PP 1.00OD .630ID .961L
15	PP BOLT 5/8" X 1" SHOULDER BOLT
16	MOBILE WHEEL ASSEMBLY
17	PUSH RIM WHEEL ASSEMBLY

ACTUATOR HANDLE #58483

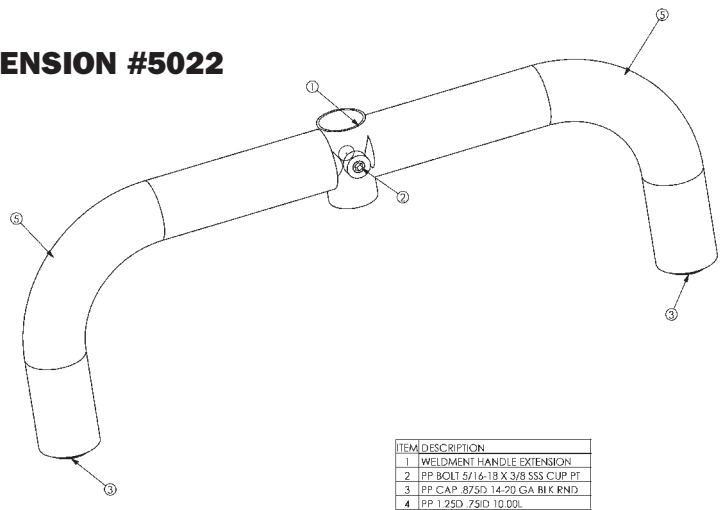


ITEM NAME	DESCRIPTION
1 PUMP HANDLE	WELDMENT PUMP HANDLE
2 10.0 FOAM GRIP	PP 1.25D .75ID 10.00L
3 CAP	PP CAP .875D 1.420 GA BLK BND
4 BOLT	PP BOLT 1/4-20 X 1-1/4 SHCS

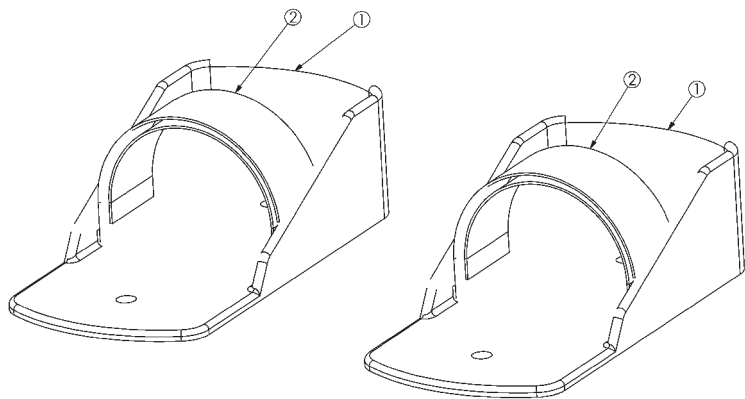
REMOVABLE ACTUATOR HANDLE #5020



ACTUATOR HANDLE EXTENSION #5022

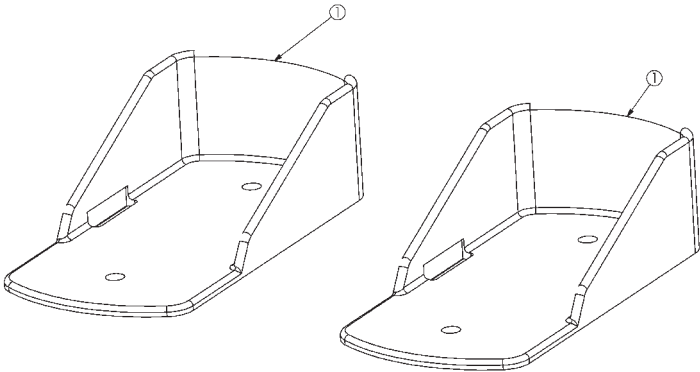


FOOT HOLDERS W/STRAPS #80634



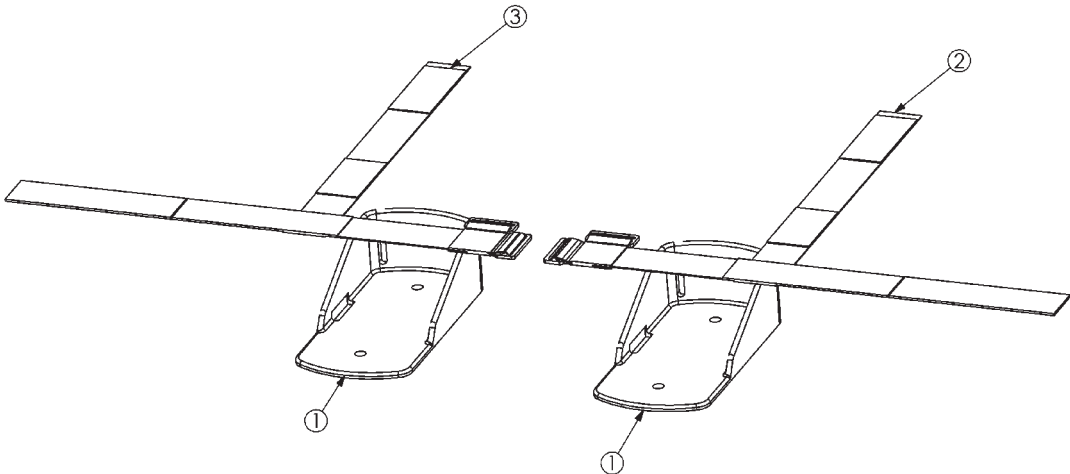
ITEM	DESCRIPTION
1	PP PLASTIC FOOT HOLDER
2	PP STRAP 2.00W 24.00L

FOOT HOLDERS #80635

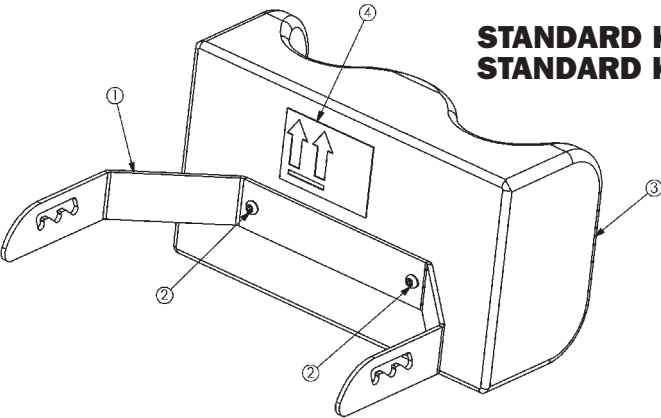


ITEM	DESCRIPTION
1	PP PLASTIC FOOT HOLDER

SECURE FOOT OPTION #80616



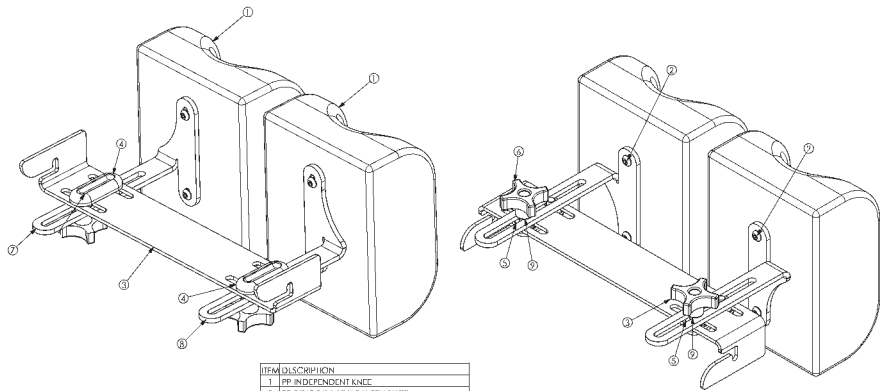
ITEM	DESCRIPTION
1	PT PLASTIC SECURE FOOT HOLDER
2	PP HEAL & ANKLE STRAP LH 5000
3	PP HEAL & ANKLE STRAP RH 5000



STANDARD KNEE/LARGE PAD #10128
STANDARD KNEE/SMALL PAD #10128S

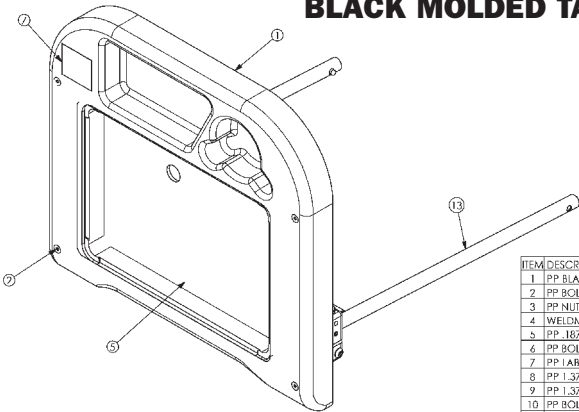
ITEM	DESCRIPTION
1	PP .2H 9.141W 16.672L
2	PP BOLT 5/16-18 X 3/4 BTN SHCS
3	PP LARGE KNEE
4	PP LABEL THIS SIDE UP

FLIP-UP INDEPENDENT KNEEPADS #5026

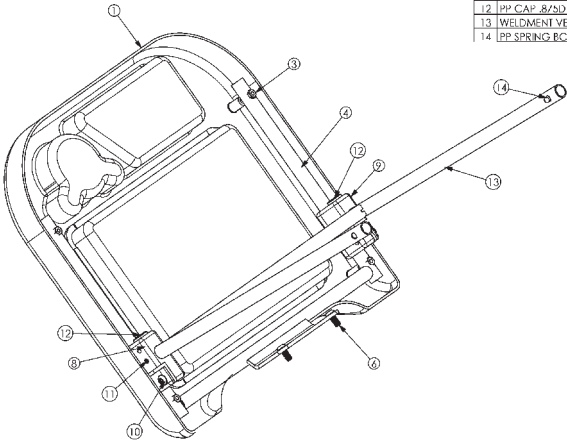


ITEM	DESCRIPTION
1	PP INDEPENDENT KNEE
2	PP BOLT 5/16-18 X 3/4 BTN SHCS
3	PP 2 1/2H 1/4 2SW 16.50L
4	PP 3/8H 1/2SW 10.00L
5	PP WASHLR 1/2 10 X 1.00 C/D NYL
6	PP KNOB 5/16-18 X 3/4 7/2 4 PT
7	PP 10.00H 2.42SW 6.00L
8	PP 10.00H 2.42SW 6.00L
9	PP WASHLR 3/8H 10 X 3/4 C/D NYLON BLACK

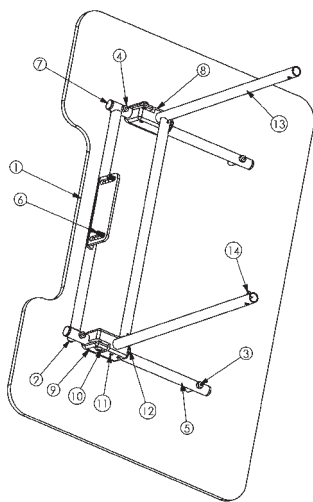
BLACK MOLDED TABLE #10600



ITEM	DESCRIPTION
1	PP BLACK MOLDED TABLE
2	PP BOLT 1/4-20 X 2 FSHCS
3	PP NUT 1/4-20 JAM NYL INS 1/2N
4	WELDMENT HORIZONTAL FRAME
5	PP 187H 10.12SW 14.62S
6	PP BOLT 5/16-18 X 3/4 BTN SHCS
7	PP 1 ABFL 2.25SW 2.01 EASYSTAND
8	PP 1 3/75H 2.12SW 3.00L
9	PP 1 3/75H 2.12SW 3.00L
10	PP BOLT 5/16-18 X 1-1/4 BTN SHCS
11	PP BOLT 5/16-18 X 3/8 SSS CUP PT
12	PP CAP 8/32 14-20 CA BLK RND
13	WELDMENT VERTICAL FRAME
14	PP SPRING BC-150-D W/DOME HEAD

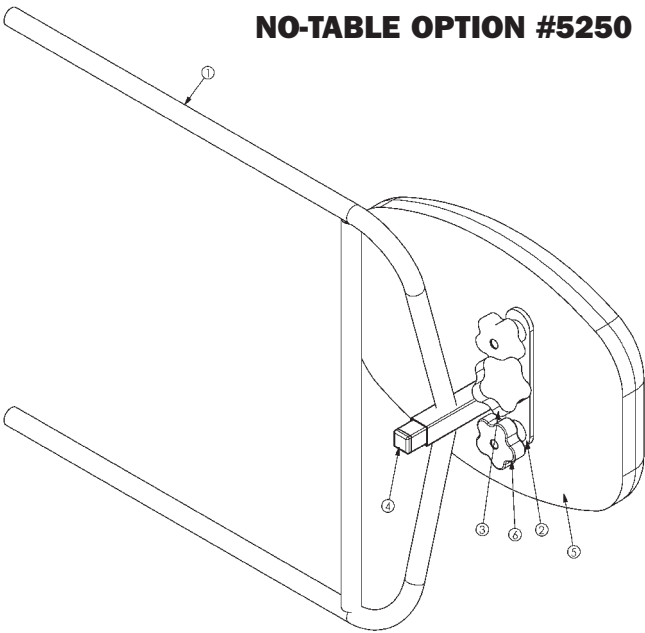


CLEAR TABLE OPTION #5040



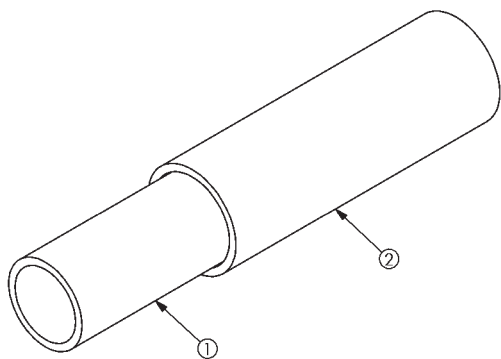
ITEM	DESCRIPTION
1	PP .375H 22.00W 32.00L
2	PP SPACFR .50D .760ID .625I
3	PP BOLT 1/4D UNC 2 SHJC BLK ZC
4	PP NUT 1/4-20 NYL INS 1/4N HIGH
5	WELDMENT HORIZONTAL FRAME
6	PP BOLT 5/16-18 X 3/4 BTN SHCS
7	PP CAP .75D 14-20 GA BLK RND
8	PP 1.375H 2.125W 3.00L
9	PP 1.375H 2.125W 3.00L
10	PP BOLT 5/16-18 X 1-1/4 BTN SHCS
11	PP BOLT 5/16-18 X 3/8 SSS CUP PT
12	PP CAP .875D 14-20 GA BLK RND
13	WELDMENT VERTICAL FRAME
14	PP SPRING BC-150-D W/DOME HEAD

NO-TABLE OPTION #5250



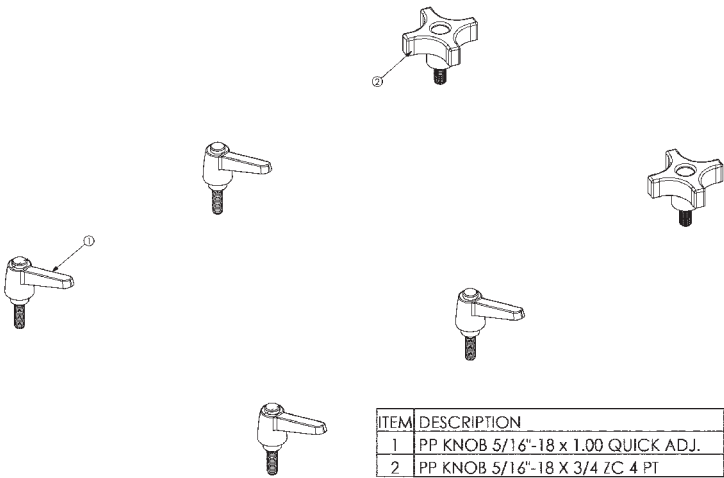
ITEM	DESCRIPTION
1	WELDMENT NO TABLE
2	WELDMENT FRONT PAD SUPPORT
3	KNOB 5/16-16 X 5/8 ZC 5 PT
4	.75H .75W 14-20GA BLK SQ
5	PAD CHEST GRAPHITE GRAY
6	KNOB 5/16-18 X 3/4 ZC 5 PT

TABLE SWING-AWAY-SLEEVE #5024

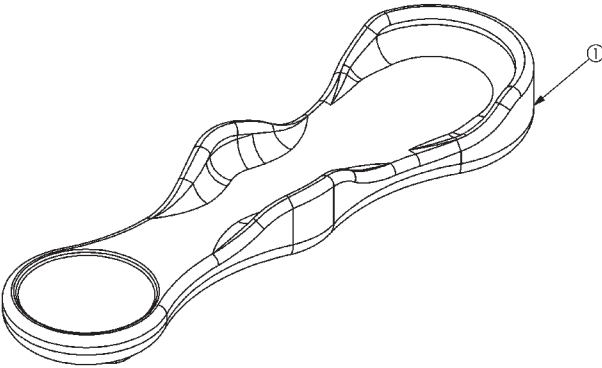


ITEM	NAME
1	INNER SWING AWAY TUBE
2	OUTER SWING-AWAY TUBE

QUICK ADJUST HANDLES #5070

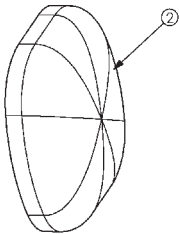
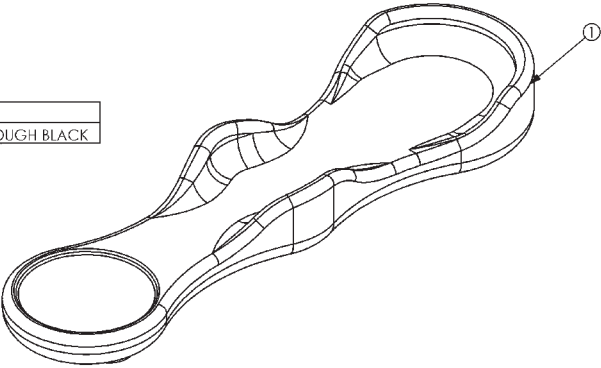


ITEM	DESCRIPTION
1	PP KNOB 5/16"-18 x 1.00 QUICK ADJ.
2	PP KNOB 5/16"-18 X 3/4 ZC 4 PT

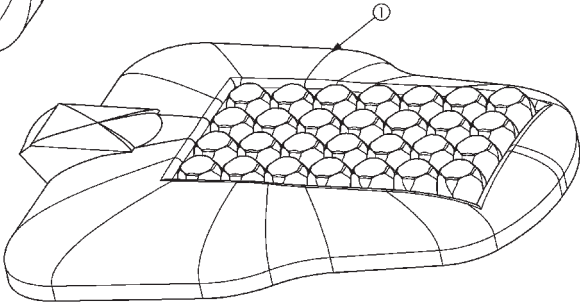


ARM TROUGHS #5030

ITEM	DESCRIPTION
1	PAD ARM TROUGH BLACK

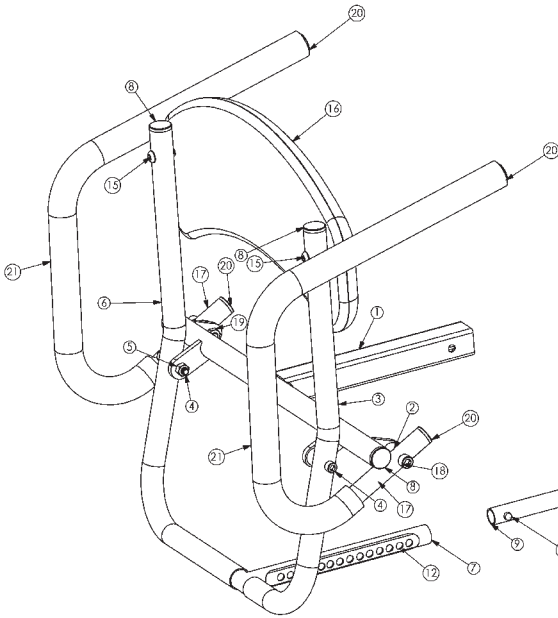


ROHO® SEAT SET #81020



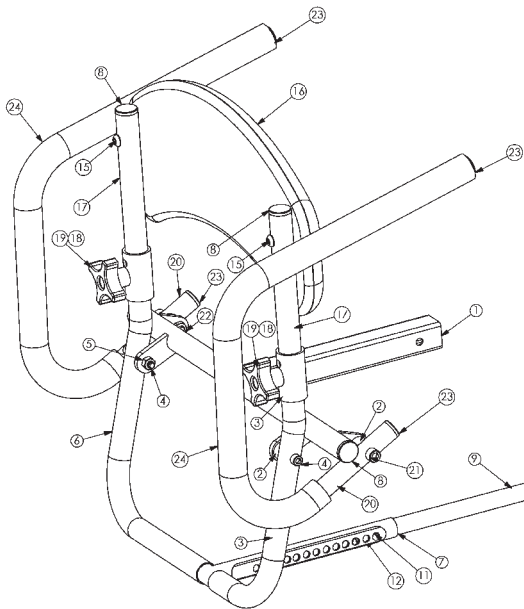
ITEM	DESCRIPTION
1	PAD ROHO SEAT CINNEBAR ASSEMBLY
2	PAD CHEST GRAPHITE GRAY

BACK OPTION #5100



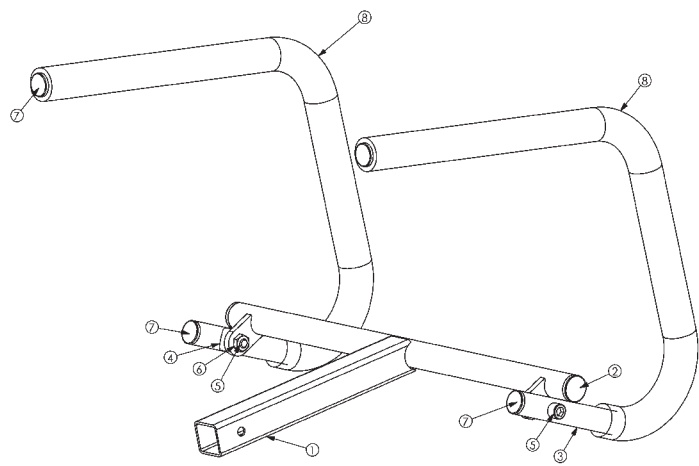
ITEM	DESCRIPTION
1	WELDMENT ARM W/BACK
2	PP WASHER .875 OD .375 ID COVED
3	PT 1.00D 18G 4.812H 3.375W 18.765L
4	PP BOLT 5/16-18 X 2 SHCS
5	PP NUT 5/16-18 NYL INS L/N HIGH
6	PT 1.00D 18G 9.375H 3.393W 18.765L
7	WELDMENT BACK PIVOT
8	PP CAP 1D 14-23 GA BLK RND
9	PT .75D 16G 16.250L
10	PP CAP .75D 14-20 GA BLK RND
11	PP SPRING BC-150-D W/DOME HEAD
12	PP LABEL FOLLOWING ARM
13	PP BOLT 5/16-18 X 1-1/2 SHCS
14	PP NUT 5/16-18 JAM NYL INS L/N
15	PP BOLT 5/16-18 X 1-1/2 BTN SHCS
16	PP BACK
17	PT .875D 14G 12.187H 15.50L
18	PP BOLT 3/8-16 X 1-3/4 SHCS
19	PP NUT 3/8-16 JAM NYL INS L/N
20	PP CAP .875D 14-20 GA BLK RND
21	PP 1.25D .750ID 24.00L

REMOVABLE BACK OPTION #5100R



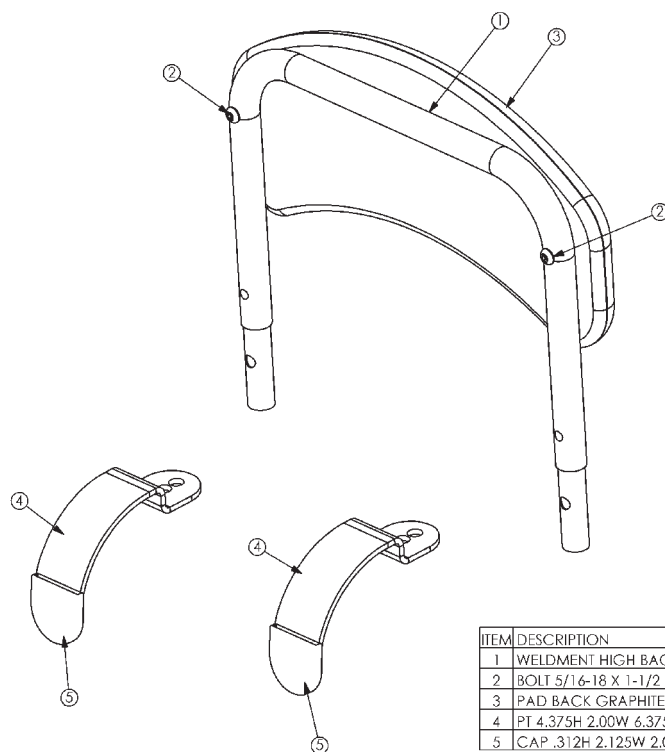
ITEM	DESCRIPTION
1	WELDMENT ARM W/BACK
2	PP WASHER .875 OD .375 ID COVED
3	PT 1.00D 18G 4.812H 1.347W 10.711L
4	PP BOLT 5/16-18 X 2 SHCS
5	PP NUT 5/16-18 NYL INS L/N HIGH
6	PT 1.00D 18G 9.375H 1.347W 10.711L
7	WELDMENT BACK PIVOT
8	PP CAP 1D 14-23 GA BLK RND
9	PT .75D 16G 16.250L
10	PP CAP .75D 14-20 GA BLK RND
11	PP SPRING BC-150-D W/DOME HEAD
12	PP LABEL FOLLOWING ARM
13	PP BOLT 5/16-18 X 1-1/2 SHCS
14	PP NUT 5/16-18 JAM NYL INS L/N
15	PP BOLT 5/16-18 X 1-1/2 BTN SHCS
16	PP BACK
17	REMOVABLE TOP TUBE
18	PP .25H .750W 2.12L
19	PP KNOB 5/16-18 X 3/4 ZC 4 PT
20	PT .875D 14G 12.187H 15.50L
21	PP BOLT 3/8-16 X 1-3/4 SHCS
22	PP NUT 3/8-16 JAM NYL INS L/N
23	PP CAP .875D 14-20 GA BLK RND
24	PP 1.25D .750ID 24.00L

NO BACK OPTION #58582



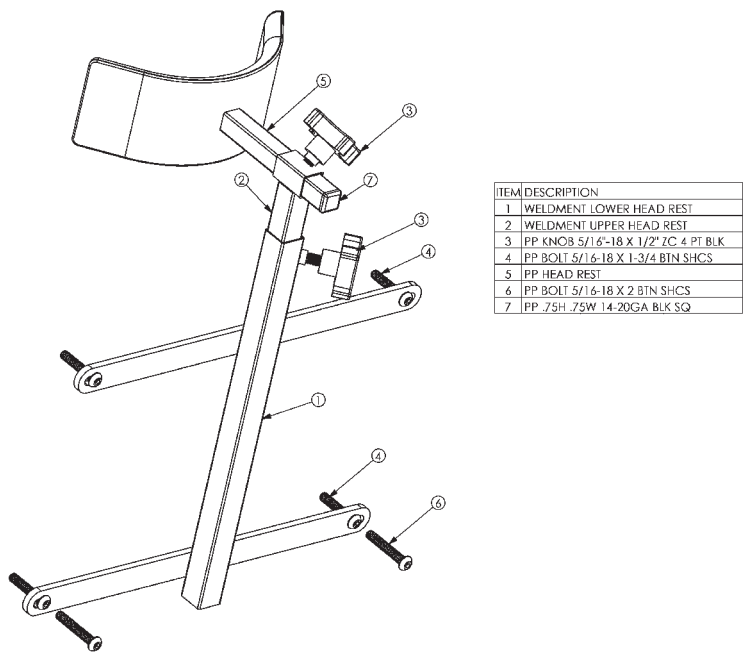
ITEM	DESCRIPTION
1	WELDMENT ARM
2	PP CAP 1D 14-23 GA BLK RND
3	PT .875D 14G 12.187H 15.50L
4	PP WASHER .875 OD .375 ID COVED
5	PP BOLT 3/8-16 X 1-3/4 SHCS
6	PP NUT 3/8-16 JAM NYL INS L/N
7	PP CAP .875D 14-20 GA BLK RND
8	PP 1.25D .750ID 24.00L

HIGH BACK

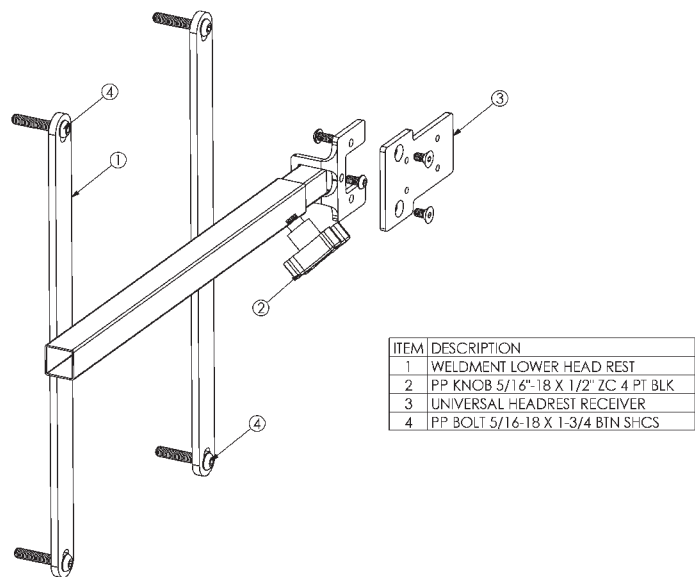


ITEM	DESCRIPTION
1	WELDMENT HIGH BACK
2	BOLT 5/16-18 X 1-1/2 BTN SHCS
3	PAD BACK GRAPHITE GRAY
4	PT 4.375H 2.00W 6.375L
5	CAP .312H 2.125W 2.062L

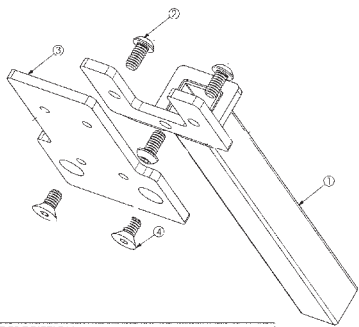
HEAD SUPPORT #5032



HIGH BACK UNIVERSAL RECEIVER #80643

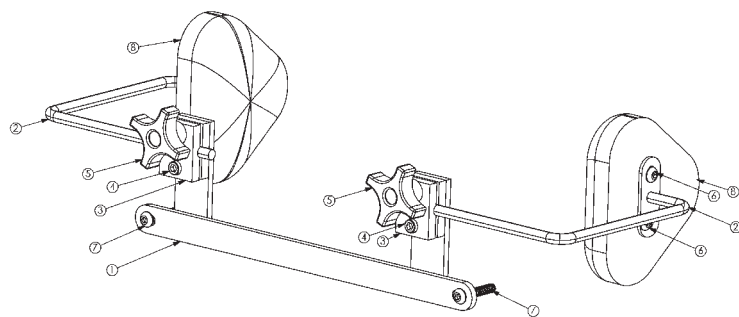


UNIVERSAL HEADREST RECEIVER #80608



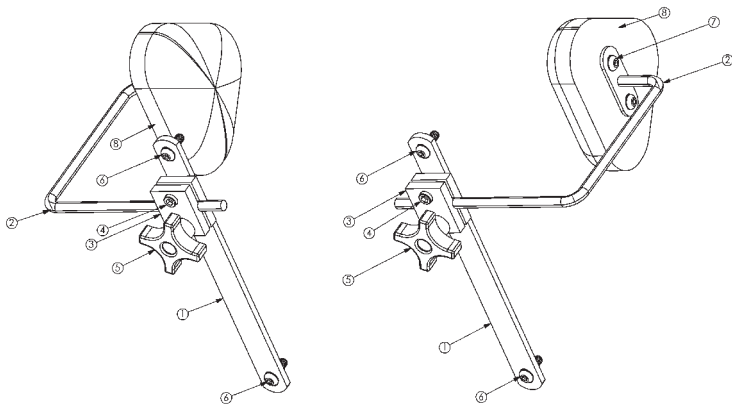
ITEM	DESCRIPTION
1	WELDMENI UNIVERSAL HEADREST BRACKET
2	PP BOLT 1/4-20UNC X 1/2 BTN SHCS
3	PP .188-1.2813W 4.25L
4	PP BOLT 1/4-20 X 1/2 FSHCS

LATERAL SUPPORTS #5036



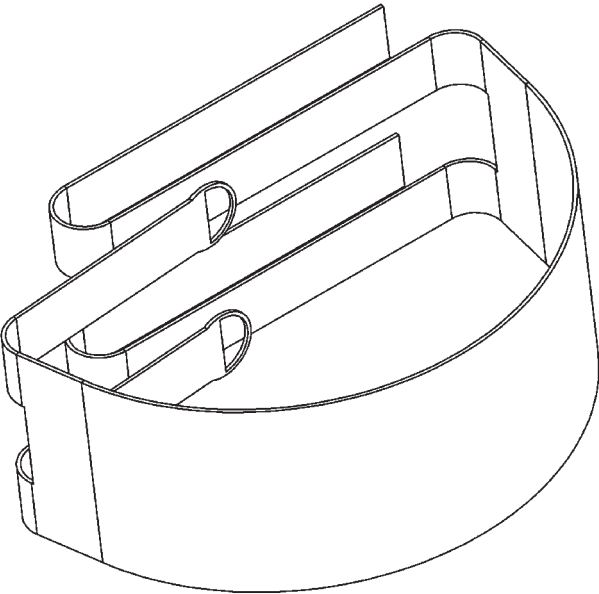
ITEM	DESCRIPTION
1	WELDMENT LATERAL SUPPORT BRACKET
2	WELDMENT LATERAL/HIP RODS
3	PT .375H 1.50W 2.00L
4	PP BOLT 5/16-18 X 5/8 SHCS
5	PP KNOB 5/16-18 X 3/4 ZC 4 PT
6	PP BOLT 5/16-18 X 1/2 BTN SHCS
7	PP BOLT 5/16-18 X 1-3/4 BTN SHCS
8	PP HIP/LATERAL PAD

HIP GUIDES #5038



ITEM	DESCRIPTION
1	WELDMENT HIP GUIDE
2	WELDMENT LATERAL/HIP RODS
3	PT .375H 1.50W 2.00L
4	PP BOLT 5/16-18 X 5/8 SHCS
5	PP KNOB 5/16-18 X 3/4 ZC 4 PT
6	PP BOLT 5/16-18 X 1.8TN SHCS
7	PP BOLT 5/16-18 X 1/2 BTN SHCS
8	PP HIP/LATERAL PAD

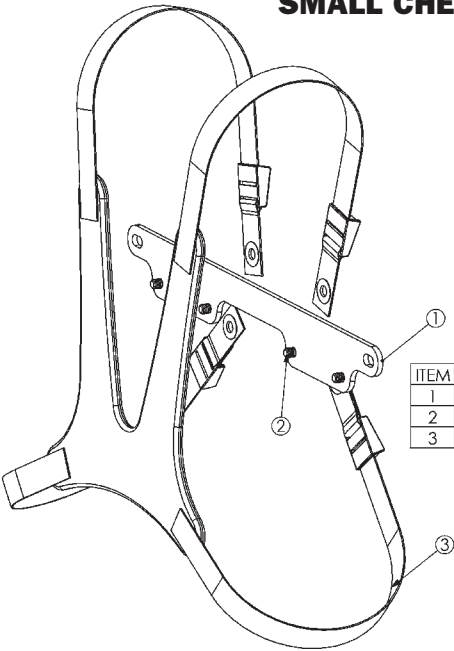
LARGE CHEST STRAP #51600
SMALL CHEST STRAP #51601



MEDIUM CHEST VEST #80632

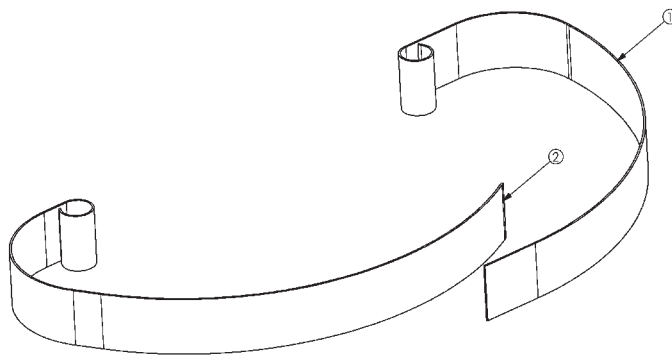
LARGE CHEST VEST #80633

SMALL CHEST VEST #80631



ITEM	DESCRIPTION
1	PP .188H 2.00W 15.50L
2	PP BOLT 5/16-18 X 1/2 BTN SHCS
3	CHEST VEST ASSEMBLY

SEAT BELT #51500



ITEM	DESCRIPTION
1	PP STRAP PILE SIDE 2.OOW 27.00L
2	PP STRAP HOOK SIDE 2.OOW 27.00L

User Log

photo copy this page for a long term record of your standing progress

Client Name	Date	Start Time	End Time	Total Time

Specifications

Height Range	5'0"-6'5"	152-195cm
Weight Limit	280 lbs.	127kg
Seat Depth Range (from front of seat)	18"-24"	46-61cm
Seat Height from Floor (transfer height)	19.5"	49cm
Seat to Footplate Range	11"-19"	28-48cm
Table/Frontpad Depth Range (when standing)	2"-10"	5-25cm
Table Height Range (from knee pivot)	25.5"-35"	65-89cm
Basic Kneepad Depth Range	3"-5"	8-13cm
Knee Width Large (center to center)	9"	23cm
Footprint	26.5"x33"	67x84cm
Weight of Basic Unit	118 lbs.	54kg
Frame Color	Black Powder Coat	
Standard Upholstery Color	Graphite Gray	
Black Molded Table Size	19.5"x20"	49x51cm

Limited Warranty

This warranty is extended only to the original purchaser/customer (or dealer non consumer who does not buy or resell). Altimate Medical, Inc. (AMI) warrants the EasyStand 5000 against defects in materials and workmanship as listed below.

- Steel Frames - 5 year warranty
- Hydraulic Actuator - 2 year warranty
- Upholstered components, plastic pads, rubber parts, painted surfaces, bearings and other parts not specifically identified above - 90 day warranty

The warranty period commences for the consumer on the purchase date from the seller/dealer. If the product is rented or otherwise not sold to a consumer, the warranty period commences from the date of invoice from AMI. Any product proven to AMI satisfaction to be defective and within warranty period, shall be repaired or replaced at AMI's option.

AMI'S SOLE OBLIGATION AND YOUR EXCLUSIVE REMEDY UNDER THIS WARRANTY SHALL BE LIMITED TO SUCH REPAIR AND/OR REPLACEMENT. This warranty does not include any labor charges incurred in replacement parts installation. Freight charges to factory are at the expense of consumer to seller. Return freight charges will be prepaid by AMI. For warranty service, please contact the authorized dealer from whom you purchased your AMI product. In the event you do not receive satisfactory warranty service, please write directly to AMI at the address below. Do not return products to our factory without prior authorization.

LIMITATIONS AND EXCLUSIONS: The foregoing warranty shall not apply to serial numbered products if the serial number has been removed or defaced. Products subject to negligence, abuse, misuse, improper operation, improper maintenance, improper storage, or damages beyond AMI's control are not covered by this warranty, and that evaluation will be solely determined by AMI. The warranty shall not apply to problems arising from normal wear or failure to follow instructions. The warranty will be void if parts not manufactured by AMI or parts not complying with original equipment specifications are added to an AMI product.

THE FOREGOING WARRANTY IS EXCLUSIVE AND IN LIEU OF ALL OTHER EXPRESS WARRANTIES. AMI SHALL NOT BE LIABLE FOR ANY CONSEQUENTIAL OR INCIDENTAL DAMAGES WHATSOEVER.

AMI maintains a policy of continual product improvement and reserves the right to change features, specifications, and prices without prior notification. Check with AMI for latest information.

Altimate Medical, Inc., P.O. Box 180, 262 W. 1st St., Morton, MN 56270 USA

Phone: 507•697•6393 Fax: 507•697•6900 1 800•342•8968

www.easystand.com info@easystand.com

Revised November, 2004

Environmental Issues

After life of the product:

- Recycle in accordance with the recycling codes of your country.
- Recycle all metal parts.
- Plastic parts should be disposed of or recycled according to the directive in your country.
- Please inquire at your local disposal management and recycling center for local codes.
- Return hydraulic actuator to Altimate Medical, Inc.



EasyStand products are manufactured by Altimate Medical, Inc. A small company with a big heart, based out of Morton, Minnesota, Altimate Medical is proud to have been helping people stand for fifteen years. If you have any stories or comments about standing please write us at the address below.

Thank you.

AltimateMedical

P.O. Box 180
262 West 1st St
Morton, MN 56270

Toll Free: 800.342.8968 or 507.697.6393
Fax Free: 877.342.8968 or 507.697.6900
email: info@easystand.com
www.easystand.com



EasyStand®

Standing technology should only be used under the guidance of a physician with recommendations for standing program protocol and any medical precautions. Standing programs should be monitored by the attending therapist. AMI maintains a policy of continual product improvement and reserves the right to change features, specifications, and prices without prior notification. Check with AMI for latest info.
FORM MAN5 1104 Copyright © 2004 Altimate Medical, Inc. All rights reserved. Printed in the U.S.A.