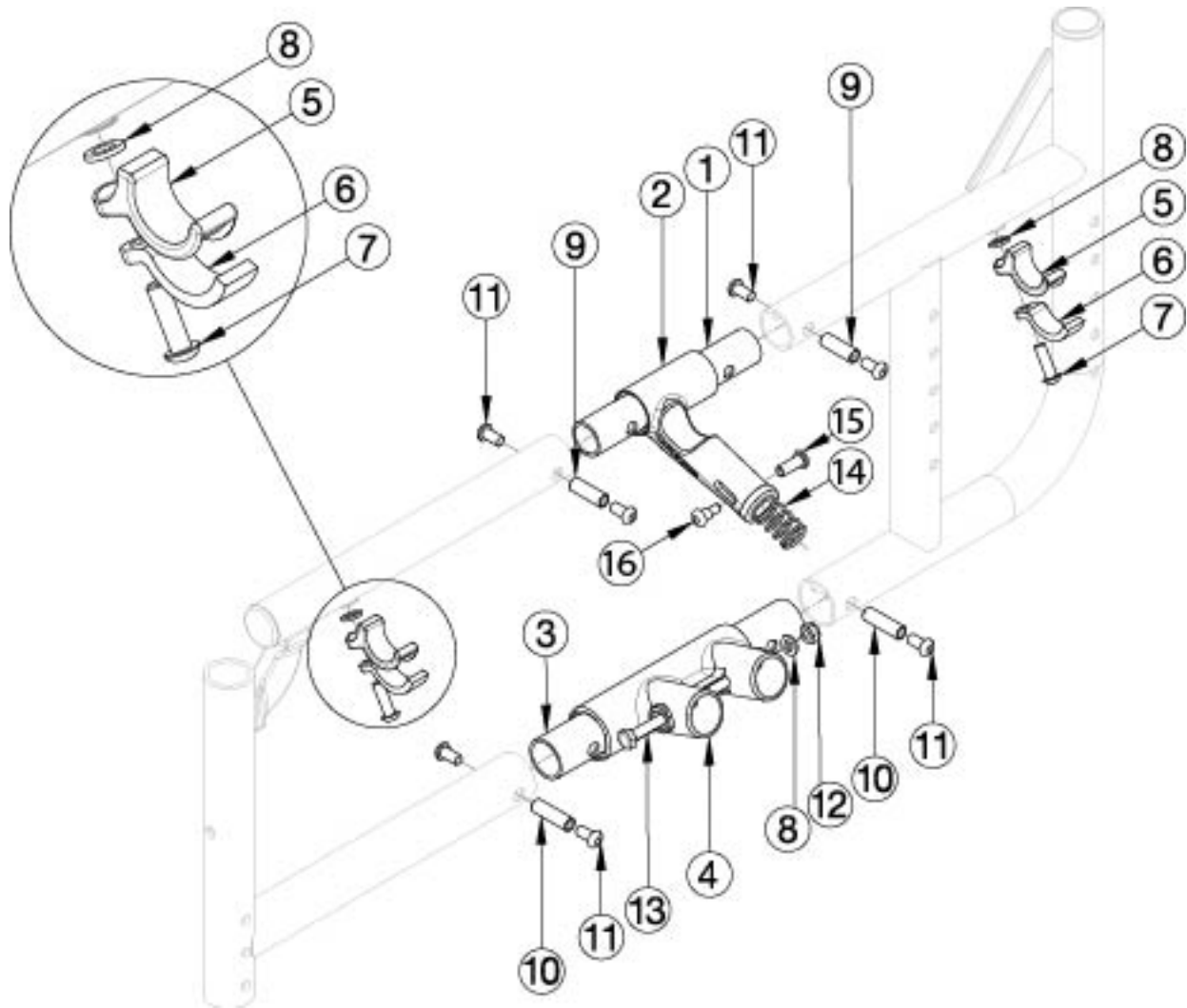


Catalyst Side Frame Assembly



Upper Pivot Assemblies are based on seat width

| Item Number | Part Number | Description | Quantity |
|-------------|-------------|--|----------|
| 2a, 16 - 18 | 500024 | Upper Pivot Assembly 14" Width <i>This kit also contains the 14" slider link (not pictured)</i> | 1 |
| 2b, 16 - 18 | 500025 | Upper Pivot Assembly 15" Width <i>This kit also contains the 15" slider link (not pictured)</i> | 1 |
| 2b, 16 - 18 | 500026 | Upper Pivot Assembly 16" Width <i>This kit also contains the 16" slider link (not pictured)</i> | 1 |
| 2b, 16 - 18 | 500027 | Upper Pivot Assembly 17" Width <i>This kit also contains the 17" slider link (not pictured)</i> | 1 |
| 2b, 16 - 18 | 500028 | Upper Pivot Assembly 18" Width <i>This kit also contains the 18" slider link (not pictured)</i> | 1 |

| Item Number | Part Number | Description | Quantity |
|-------------|-------------|--|----------|
| 2b, 16 - 18 | 500029 | Upper Pivot Assembly 19" Width <i>This kit also contains the 19" slider link (not pictured)</i> | 1 |
| 2b, 16 - 18 | 500030 | Upper Pivot Assembly 20" Width <i>This kit also contains the 20" slider link (not pictured)</i> | 1 |
| 2b, 16 - 18 | 501479 | Upper Pivot Assembly 21/22" Width <i>This kit also contains the 21/22" slider link (not pictured)</i> | 1 |
| 5, 6, 7a, 8 | 501005 | Seat Hook and Support Hardware Kit, Standard, Catalyst <i>Used with Standard Weight Capacity. This kit contains quantity of 1 each</i> | 1 |
| 5, 6, 7b, 8 | 114528 | Seat Hook and Support Hardware Kit, Standard, for Heavy Duty Catalyst <i>Used with Heavy Duty / 350 lbs Weight Capacity. This kit contains quantity of 1 each</i> | 1 |
| 1 | 000011 | Frame Connector Upper CAT | 1 |
| 3 | 000009 | Frame Connector Lower CAT | 1 |
| 4a | 000001 | Lower Frame Pivot CAT <i>Used when Titanium cross braces are present. Used on Catalyst 4 chairs with standard weight capacity and seat widths 14"-20" with seating system cross braces.</i> | 1 |
| 4b | 002806 | Lower Frame Pivot CAT <i>Effective 4/13/16 on 21 and 22" wide chairs with standard cross braces starting with serial numbers C4017705, C4HD002593, C5030818, C5HD002749, C5TH003679. Effective 6/15/16 on 14-20" wide chairs with standard cross braces starting with serial numbers C4018744, C4HD002701, C5032544, C5037980, C5HD002834. Effective 6/15/16 on Catalyst 5 chairs with 14"-22" chair widths with seating system cross braces starting with serial numbers C5032544, C5037980, C5HD002834. Effective 6/15/16 on Catalyst 4 chairs with heavy duty option or 21"-22" chair widths with seating system cross braces starting with serial numbers C4018744, C4HD002701.</i> | 1 |
| | 502177 | Lower Frame Pivot and Catalyst Oval-Style Cross Brace Hardware Kit (Pair) <i>Used with oval-style cross braces. See Catalyst Aluminum Cross Braces page or Open Seating (Seating System) Cross Braces page for all parts in this kit.</i> | 1 |
| 5 | 000003 | Seat Hook, Catalyst | 2 |
| 6 | 000004 | Seat Hook Support, Catalyst | 2 |
| 7a | 100668 | M6 x 20 CLS10.9 BTN SHCS ZC w/Patch <i>Used with Standard Weight Capacity</i> | 2 |
| 7b | 101180 | M6 x 20 SHCS BLK ZC <i>Used with Heavy Duty / 350 lbs Weight Capacity</i> | 1 |
| 8 | 100831 | 1/2" Washer OD .040" Thick | 3 |
| 9 | 000065 | M6 x 23.68 Threaded Barrel | 2 |

| Item Number | Part Number | Description | Quantity |
|--------------------|--------------------|--------------------------------|-----------------|
| 10 | 000066 | M6 x 27 Threaded Barrel | 2 |
| 11 | 100667 | M6 x 12 BTN SHCS BLKZC w/Patch | 8 |