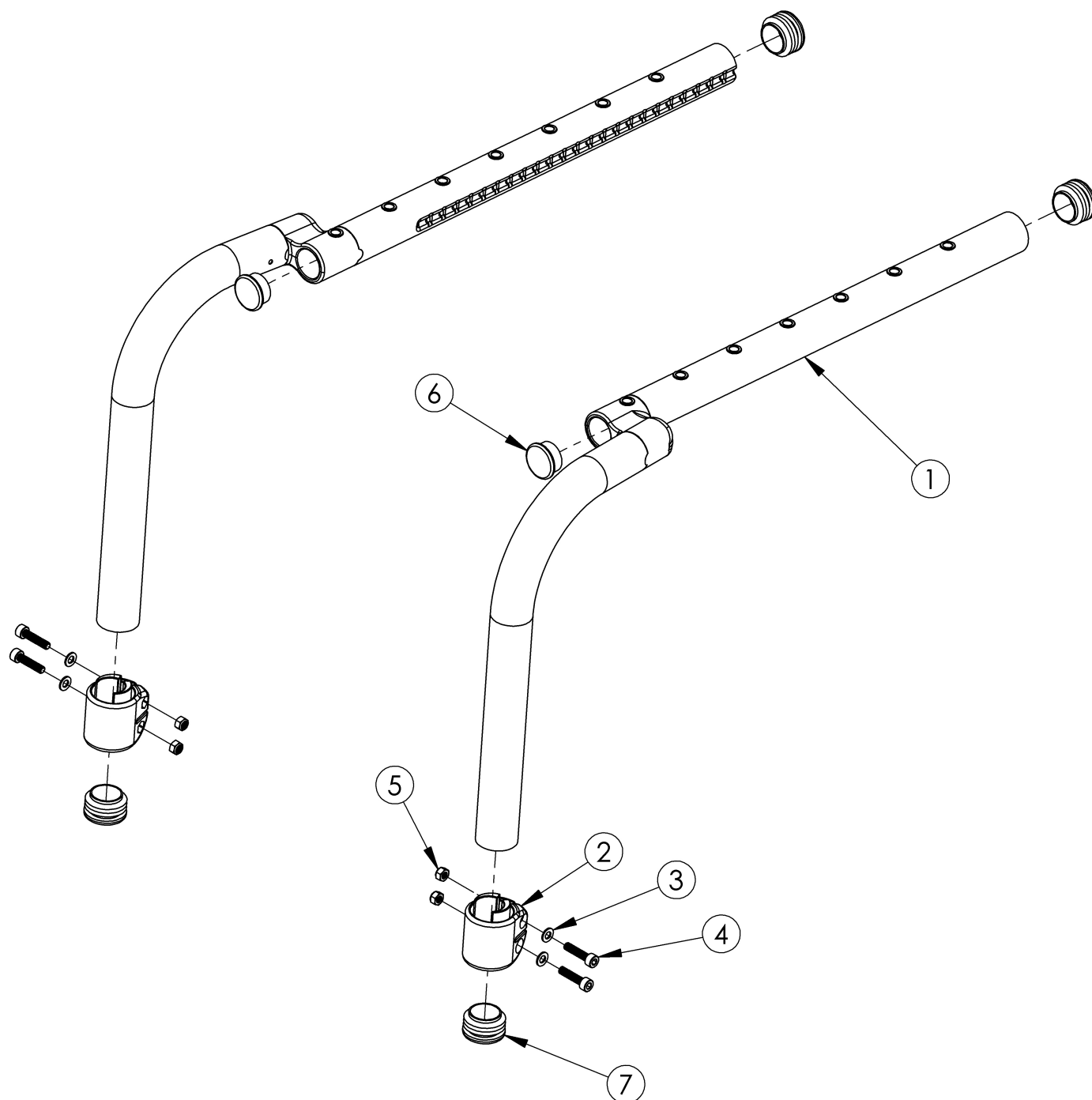


Discontinued Klik Offset Side Frame



This Klik Offset Side Frame is discontinued and was used on serial numbers prior to CLK005270. Item numbers 2-5 are only needed when footrest is not high mounted.

| Item Number | Part Number | Description | Quantity |
|-------------|-------------|-------------------------|----------|
| 2a | 001817 | Footrest Clamp Right LW | 1 |

| Item Number | Part Number | Description | Quantity |
|-------------|-------------|--|----------|
| 2b | 002395 | Footrest Clamp Left LW | 1 |
| 3 | 101856 | Flat Washer, M5, Blk Zn | 4 |
| 4 | 101843 | M5 x 20 SHCS Blk Zn | 4 |
| 5 | 100657 | M5 Nylock Nut Blk Zn | 4 |
| 2-5 | 506823 | Frame Inserted Footrest Hardware Kit for Discontinued Frame, Klik (PAIR) | 1 |
| 6 | 100804 | Tube End Plug 1" | 2 |
| 7 | 002791 | Seat Tube End Cap <i>Use quantity 4 with high-mounted footrests.</i> | 2 |