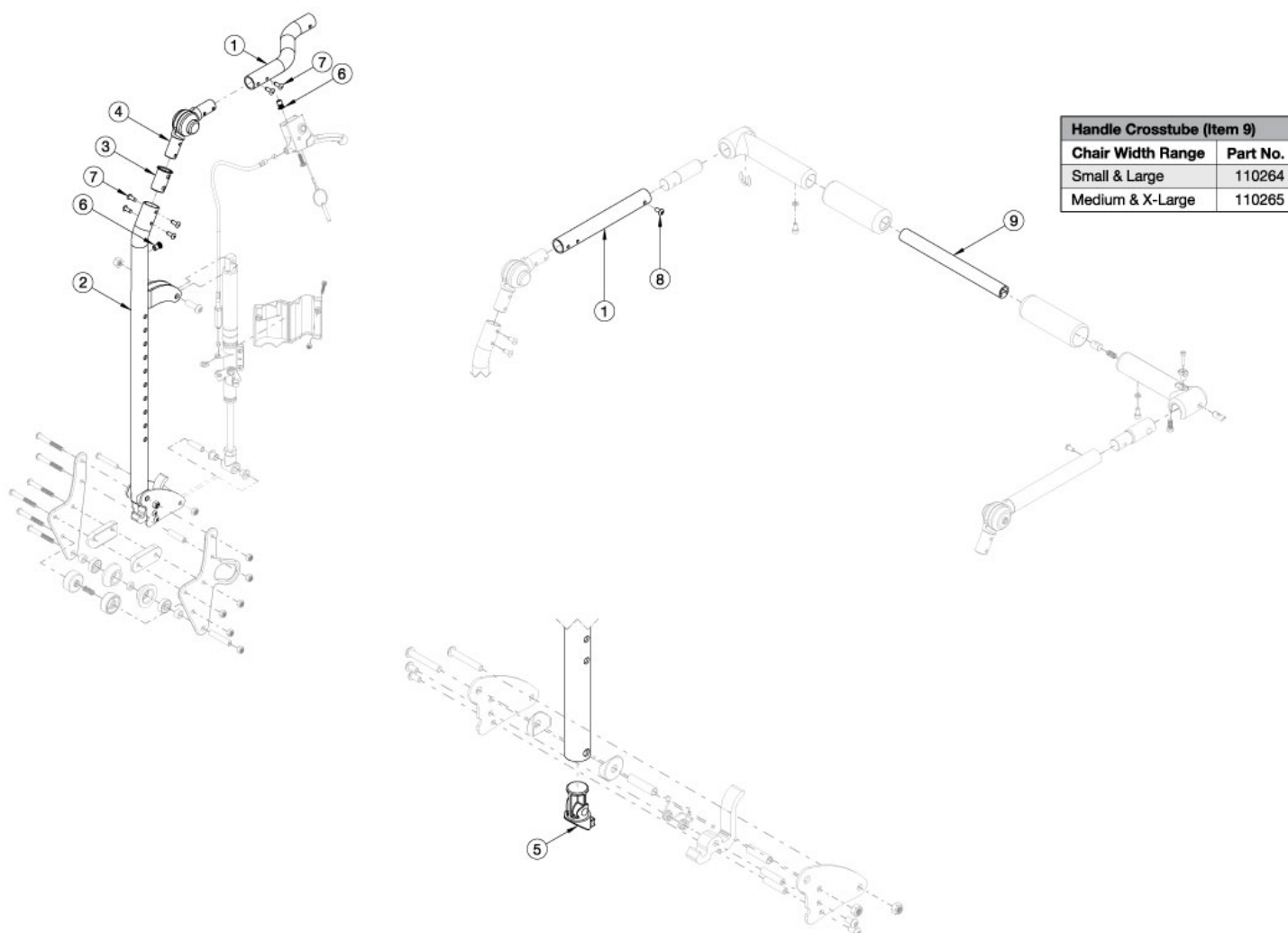


Arc Reclining Backrest with Folding Adjustable Handle - Growth



Callout #1: 10"-13" widths receive the curved tube and 14"-18" widths receive the straight shaped tube. When changing backrest types, check to see if new cables and tilt triggers are needed for both foot and hand tilts. If chair was invoiced prior to 12/18/23, an upper back tube assembly is required. If chair was invoiced after to 12/18/23, upper back tube assembly parts can now be purchased individually

Item Number	Part Number	Description	Quantity
1a, 2a, 3, 4, 5, 6, 7, 8	113937	Reclining Backrest Tube Assembly, Short, 10-13" Wide, Right, Arc	1
1b, 2a, 3, 4, 5, 6, 7, 8	113938	Reclining Backrest Tube Assembly, Short, 10-13" Wide, Left, Arc	1
1a, 2b, 3, 4, 5, 6, 7	113939	Reclining Backrest Tube Assembly, Tall, 10-13" Wide, Right, Arc	1
1b, 2b, 3, 4, 5, 6, 7, 8	113940	Reclining Backrest Tube Assembly, Tall, 10-13" Wide, Left, Arc	1
1c, 2a, 3, 4, 5, 6, 7, 8	113941	Reclining Backrest Tube Assembly, Short, 14-18" Wide, Right, Arc	1

Item Number	Part Number	Description	Quantity
1d, 2a, 3, 4, 5, 6, 7, 8	113942	Reclining Backrest Tube Assembly, Short, 14-18" Wide, Left, Arc	1
1c, 2b, 3, 4, 5, 6, 7, 8	113943	Reclining Backrest Tube Assembly, Tall, 14-18" Wide, Right, Arc	1
1d, 2b, 3, 4,5, 6, 7, 8	113944	Reclining Backrest Tube Assembly, Tall, 14-18" Wide, Left, Arc	1
9a	110264	Cross Tube, Rigidizer Handle, 14-16 Wide	1
9b	110265	Cross Tube, Rigidizer Handle, 16-18 Wide	1