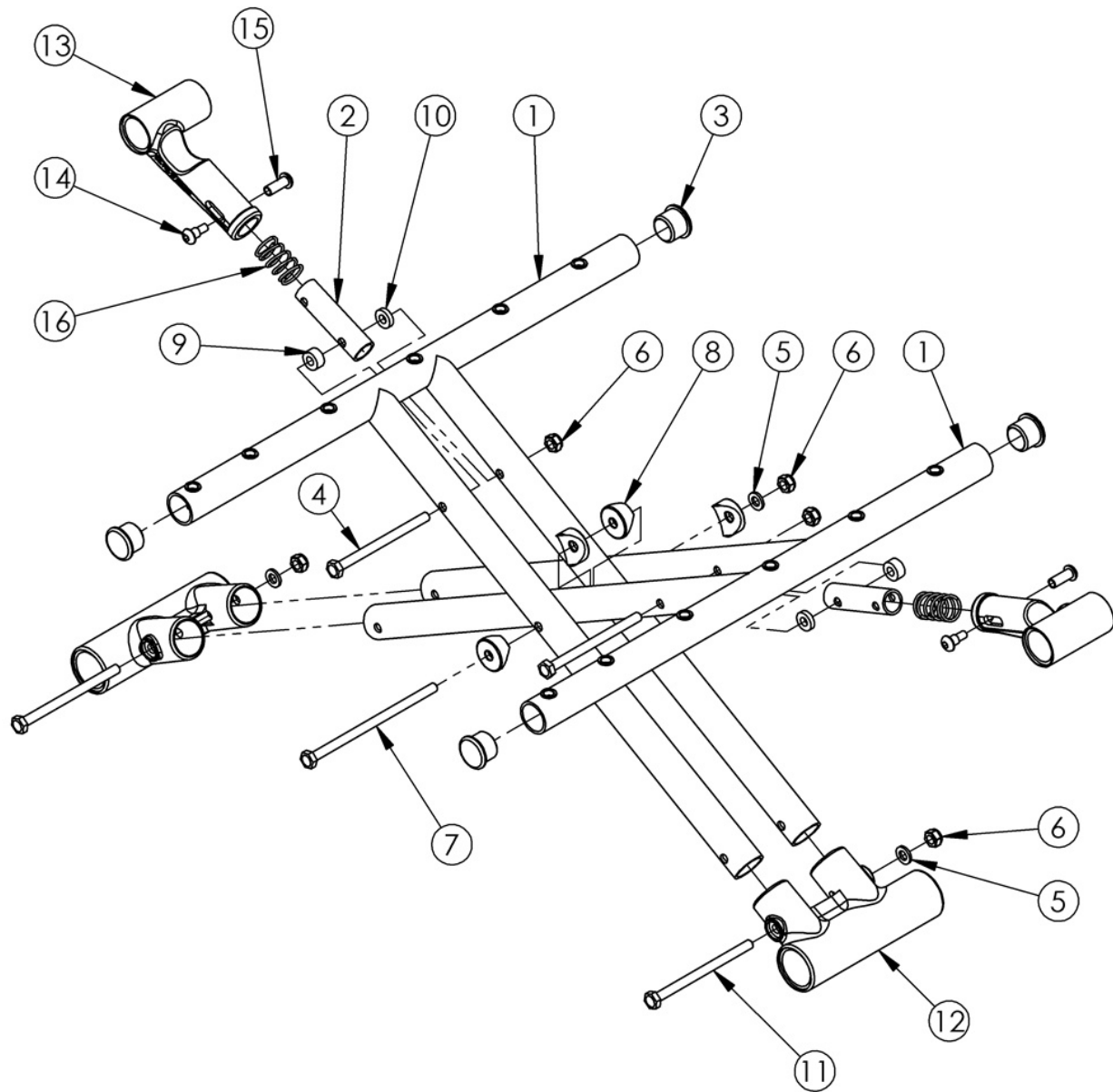


# Discontinued Catalyst Aluminum Cross Braces



*Pictured round-style cross braces effective prior to 4/13/16 on 21" and 22" wide chairs ending with serial numbers C4017704, C4HD002592, C5030817, C5HD002748, C5TH003678.<p>*

*Pictured round-style cross braces effective prior to 6/15/16 on 14" - 20" wide chairs ending with serial numbers C4018743, C4HD002700, C5032543, C5037979, C5HD002834, C5TH003715.*

Item Number	Part Number	Description	Quantity	Retail
2a, 13a, 14-16	500024	Upper Pivot Assembly 14" Width	2	\$44.77
2b, 13b, 14-16	500025	Upper Pivot Assembly 15" Width	2	\$44.77

Item Number	Part Number	Description	Quantity	Retail
2c, 13b, 14-16	500026	Upper Pivot Assembly 16" Width	2	\$44.77
2d, 13b, 14-16	500027	Upper Pivot Assembly 17" Width	2	\$44.77
2e, 13b, 14-16	500028	Upper Pivot Assembly 18" Width	2	\$44.77
2f, 13b, 14-16	500029	Upper Pivot Assembly 19" Width	2	\$44.77
2g, 13b, 14-16	500030	Upper Pivot Assembly 20" Width	2	\$44.77
2h, 13b, 14-16	501479	Upper Pivot Assembly 21/22" Width	2	\$44.77
3	101162	7/8 OD End Plug BLK	4	\$1.71
4	100660	M6 x 80mm CLS8.8 DIN931 HHCS ZC	2	\$1.58
5	100746	M6 Flat Washer Blk Zn	3	\$1.58
6	100658	M6 Nylock Nut Blk Zn	5	\$1.05
7	100678	M6 x 110 CLS8.8 DIN931 HHCS ZC	1	\$2.63
8	000054	Saddle 7/8"	4	\$1.58
9	100880	1/4" Plastic Spacer	2	\$2.63
10	105019	3/16" Plastic Spacer	2	\$0.53
11	100704	M6 x 90 CLS8.8 DIN931 HHCS ZC	2	\$1.58
4-11	501398	Round-Style Cross Brace Hardware Kit CAT	1	\$23.96
12	000001	Lower Frame Pivot CAT	2	\$27.71