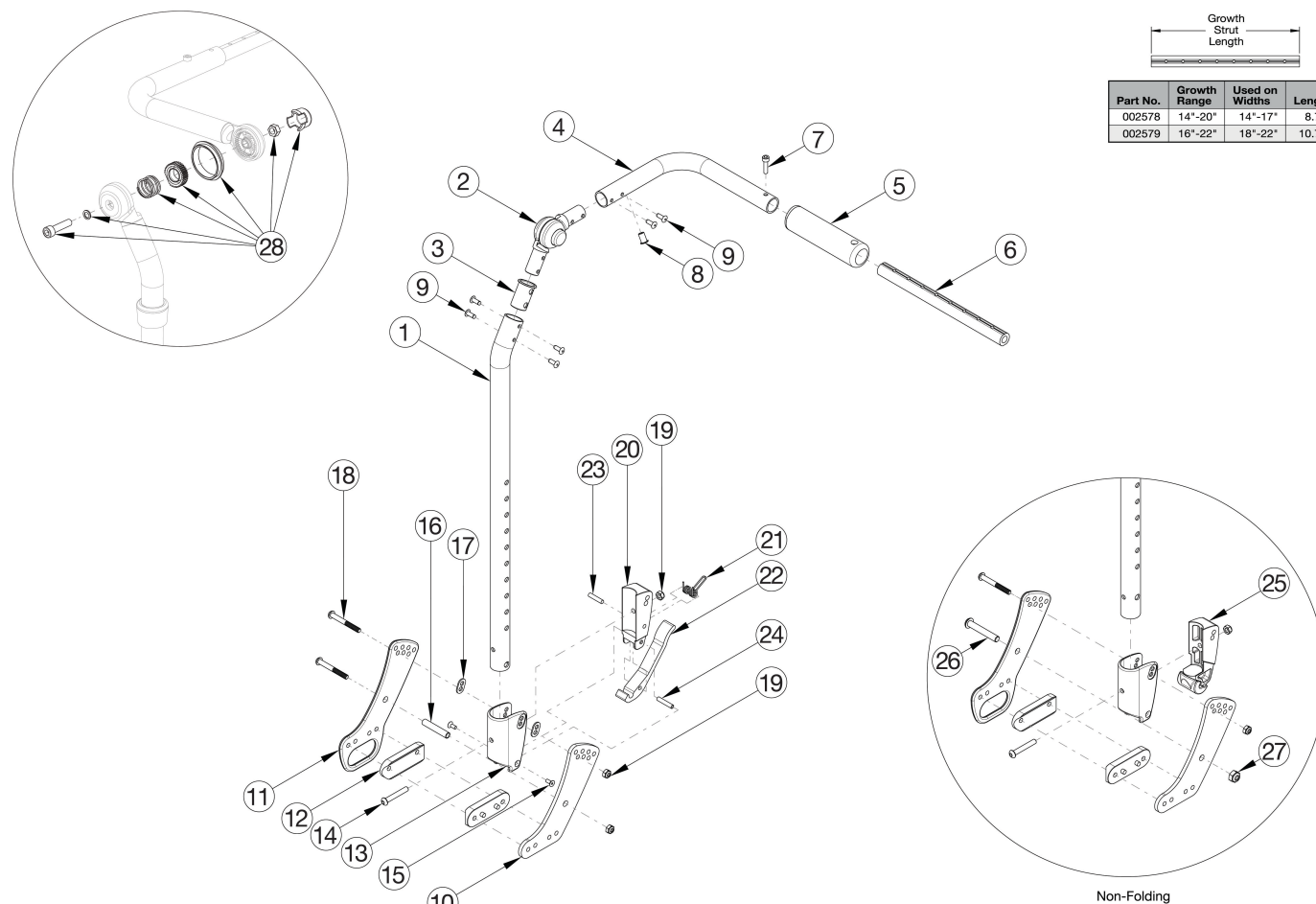


# CR45 Fixed Height with Adjustable Handle Backrest



If chair was invoiced prior to 12/18/23, an upper back tube assembly is required. If chair was invoiced after to 12/18/23, parts 1-4 and 9 shown in the diagram above can now be purchased individually. If changing from another style backrest and the hand tilt is present, a new Hand Tilt Cable / Trigger Kit may be required.

Item Number	Part Number	Description	Quantity
1a, 2, 3, 4b, 5, 8 - 10, 12 - 14, 18 - 19, 25 - 27	116500	Back Assembly w/ Latch Insert, Fixed Height w/ Adjustable Handle Short with Hardware, Non-Folding Left CR45	1
1a, 2, 3, 4a, 5, 8 - 10, 12 - 14, 18 - 19, 25 - 27	116501	Back Assembly w/ Latch Insert, Fixed Height w/ Adjustable Handle Short with Hardware, Non-Folding Right CR45	1
1b, 2, 3, 4b, 5, 8 - 10, 12 - 14, 18 - 19, 25 - 27	116502	Back Assembly w/ Latch Insert, Fixed Height w/ Adjustable Handle Tall with Hardware, Non-Folding Left CR45	1
1b, 2, 3, 4a, 5, 8 - 10, 12 - 14, 18 - 19, 25 - 27	116503	Back Assembly w/ Latch Insert, Fixed Height w/ Adjustable Handle Tall with Hardware, Non-Folding Right CR45	1
1a, 2 - 3, 4b, 8 - 10, 12 - 24	116496	Back Assembly w/ Latch Insert, Fixed Height w/ Adjustable Handle Short with Hardware, Left CR45	1

Item Number	Part Number	Description	Quantity
1a, 2 - 3, 4a, 8 - 10, 12 - 24	116497	Back Assembly w/ Latch Insert, Fixed Height w/ Adjustable Handle Short with Hardware, Right CR45	1
1b, 2 - 3, 4b, 8 - 10, 12 - 24	116498	Back Assembly w/ Latch Insert, Fixed Height w/ Adjustable Handle Tall with Hardware, Left CR45	1
1b, 2 - 3, 4a, 8 - 10, 12 - 24	116499	Back Assembly w/ Latch Insert, Fixed Height w/ Adjustable Handle Tall with Hardware, Right CR45	1
1a, 2, 3, 4b, 5, 8 - 9, 13 - 15, 17, 19 - 24	506750	Back Assembly w/ Latch Insert, Fixed Height w/ Adjustable Handle Short, Left Focus	1
1a, 2- 3, 4a, 5, 8 - 9, 13 - 15, 17, 19 - 24	506751	Back Assembly w/ Latch Insert, Fixed Height w/ Adjustable Handle Short, Right Focus	1
1b, 2- 3, 4b, 5, 8 - 9, 13 - 15, 17, 19 - 24	506752	Back Assembly w/ Latch Insert, Fixed Height w/ Adjustable Handle Tall, Left Focus	1
1b, 2- 3, 4a, 5, 8 - 9, 13 - 15, 17, 19 - 24	506753	Back Assembly w/ Latch Insert, Fixed Height w/ Adjustable Handle Tall, Right Focus	1
1a, 2, 3, 4b, 5, 8 - 9, 13 - 14, 19, 25	506754	Back Assembly w/ Latch Insert, Fixed Height w/ Adjustable Handle Short, Non-Folding Left Focus	1
1a, 2, 3, 4a, 5, 8 - 9, 13 - 14, 19, 25	506755	Back Assembly w/ Latch Insert, Fixed Height w/ Adjustable Handle Short, Non-Folding Right Focus	1
1b, 2, 3, 4b, 5, 8 - 9, 13 - 14, 19, 25	506756	Back Assembly w/ Latch Insert, Fixed Height w/ Adjustable Handle Tall, Non-Folding Left Focus	1
1b, 2, 3, 4a, 5, 8 - 9, 13 - 14, 19, 25	506757	Back Assembly w/ Latch Insert, Fixed Height w/ Adjustable Handle Tall, Non-Folding Right Focus	1
10, 12, 16, 18 - 19	116492	Backrest Hardware Assembly, Single Side, Std CR45	1
10-12, 16, 18 - 19	116493	Backrest Hardware Assembly, Single Side, Transit CR45	1
10 - 11, 18 - 19, 26 - 27	116494	Backrest Hardware Assembly, Single Side, Std Non-Folding CR45	1
10 - 12, 18, 19, 26 - 27	116495	Backrest Hardware Assembly, Single Side, Transit Non-Folding CR45	1
1a, 2, 3, 4b, 5, 8, 9	506815	Backpost Assembly Fixed Height w/Adjustable Handle, Short, Left Focus	1
1a, 2, 3, 4a, 5, 8, 9	506816	Backpost Assembly Fixed Height w/Adjustable Handle, Short, Right Focus	1
1b, 2, 3, 4b, 5, 8, 9	506817	Backpost Assembly Fixed Height w/Adjustable Handle, Tall, Left Focus	1
1b, 2, 3, 4a, 5, 8, 9	506818	Backpost Assembly Fixed Height w/Adjustable Handle, Tall, Right Focus	1
13 - 15, 17, 19, 20 - 24	114490	Lower Folding Backrest Latch Assembly, Fixed Height w/ Adjustable Handle, Focus / CR45	1
13, 14, 19, 25	125106	Lower Non-Folding Backrest Latch Assembly, Fixed Height w/ Adjustable Handle, Focus / CR45	1
4b, 5, 7, 8, 9	122918	Push Handle Tube w/ Grip and Hardware, Left	1

Item Number	Part Number	Description	Quantity
4a, 5, 7, 8, 9	122920	Push Handle Tube w/ Grip and Hardware, Right	1
1a	003495	Fixed Height Back Post for Adjustable Handle Short <i>Used on chairs starting 12/8/23</i>	1
1b	003496	Fixed Height Back Post for Adjustable Handle Tall <i>Used on chairs starting 12/8/23</i>	1
2	116066	Locking Hinge Assembly <i>Used on chairs starting 12/8/23</i>	1
3	001266	Bushing .832 OD x .720 ID <i>Used on chairs starting 12/8/23</i>	1
4a	003488	Tube, Push Handle Long, Right Tilt	1
4b	003489	Tube, Push Handle Long, Left Tilt	1
5	001098	Foam Push Handle Tilt	1
6a	002578	Growth Strut, Stroller, Short	1
6b	002579	Growth Strut, Stroller, Long	1
7	101843	M5 x 20 SHCS Blk Zn	1
9	100669	M5 x 10 BTN SHCS BLKZC w/Patch <i>Used on chairs starting 12/8/23</i>	6
10	112488	Standard Back Plate, CR45/Flip XPA	1
11	112489	Transit Back Plate, CR45/Flip XPA	1
12	112491	Saddle, Dual, 1" x 2.0SP	2
13	001894	Cover Plate, Latch Block	1
14	100797	M6 x 40 BHCS BLK ZC	1
15	101818	M4 x 10 FHCS BLKZC w/Patch	1
16	002738	Spacer .313 OD x .243 ID x 1.68 long	1
17	001897	Washer, Dual, PSA	2
18	101781	M6 x 50mm Partial Thread BHCS Blk ZC	2
19	100658	M6 Nylock Nut Blk Zn	3
20	001895	Latch Insert, Folding Backrest	1
21	001896	Spring, Backrest Latch	1
22	001893	Latch Lever, Backrest	1

Item Number	Part Number	Description	Quantity
23	102694	Dowel Pin, M5 X 24, Blk Zn	1
24	002513	Threaded Barrel, 5mm OD x M4	1
25	002035	Insert, Backrest, Non-Folding	1
26	101815	M8 x 50 BHCS Blk Zn	1
27	100659	M8 Nylock Nut Blk Zn	1
28	110524	Locking Hinge Button Assembly with Instruction	1