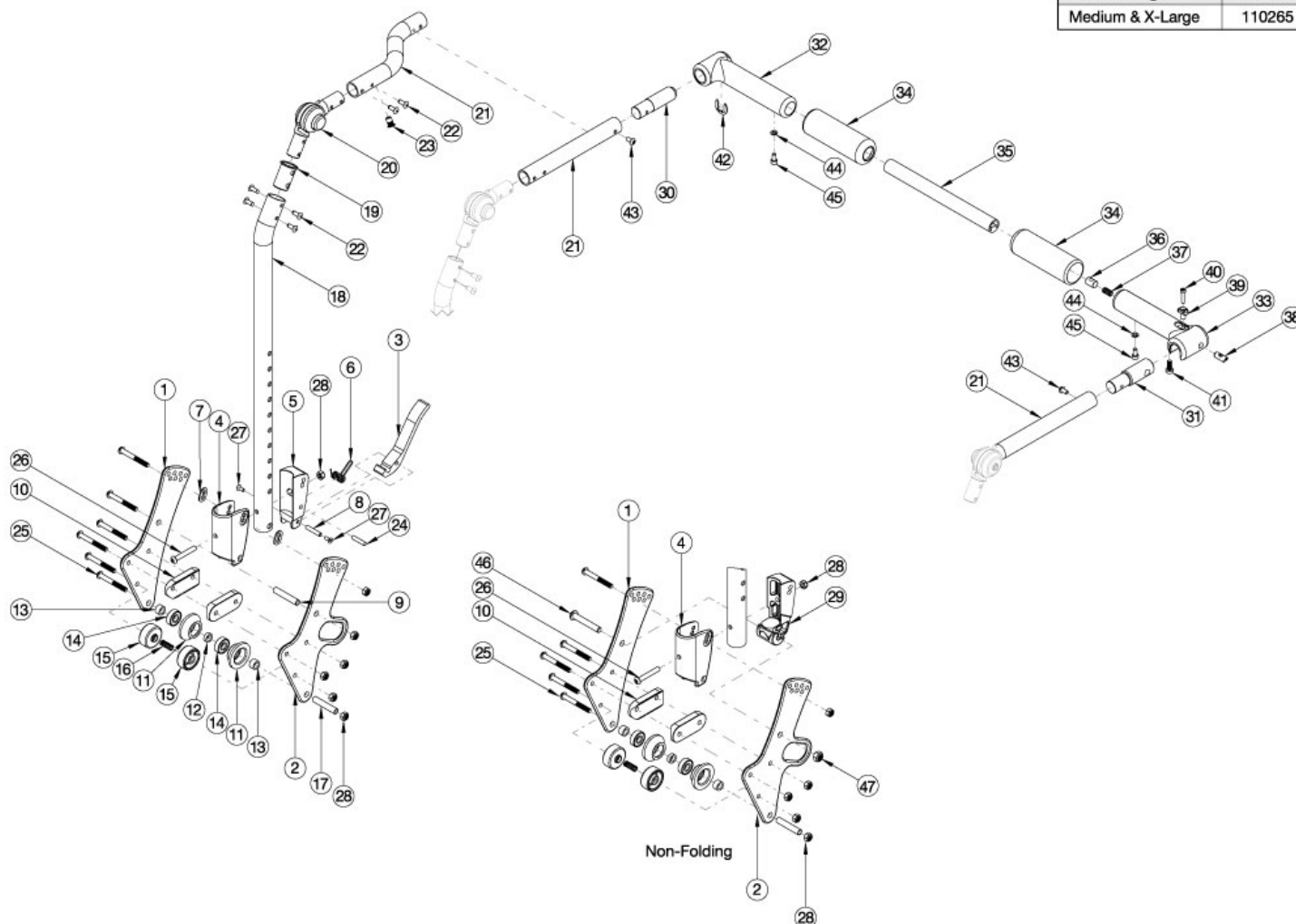


# Arc Fixed Height with Folding Adjustable Handle Backrest

Handle Crosstube (Item 35)	
Chair Width Range	Part No.
Small & Large	110264
Medium & X-Large	110265



Callout #21: 10"-13" widths receive the curved tube and 14"-18" widths receive the straight shaped tube. When changing backrest types, check to see if new cables and tilt triggers are needed for both foot and hand tilts.

Item Number	Part Number	Description	Quantity
1, 3-10, 18a, 19, 20, 21b, 22-28	113556	Fixed Height w/ Adjustable Handle Backrest Assembly, 10-13" Wide, Short, Left, Arc	1
1, 3-10, 18a, 19, 20, 21a, 22-28	113557	Fixed Height w/ Adjustable Handle Backrest Assembly, 10-13" Wide, Short, Right, Arc	1
1, 3-10, 18a, 19, 20, 21d, 22-28	113548	Fixed Height w/ Adjustable Handle Backrest Assembly, 14-18" Wide, Short, Left, Arc	1
1, 3-10, 18a, 19, 20, 21c, 22-28	113549	Fixed Height w/ Adjustable Handle Backrest Assembly, 14-18" Wide, Short, Right, Arc	1

Item Number	Part Number	Description	Quantity
1-10, 18a, 19, 20, 21b, 22-28	113560	Fixed Height w/ Adjustable Handle Backrest Assembly, Transit, 10-13" Wide, Short, Left, Arc	1
1-10, 18a, 19, 20, 21a, 22-28	113561	Fixed Height w/ Adjustable Handle Backrest Assembly, Transit, 10-13" Wide, Short, Right, Arc	1
1-10, 18a, 19, 20, 21d, 22-28	113552	Fixed Height w/ Adjustable Handle Backrest Assembly, Transit, 14-18" Wide, Short, Left, Arc	1
1-10, 18a, 19, 20, 21c, 22-28	113553	Fixed Height w/ Adjustable Handle Backrest Assembly, Transit, 14-18" Wide, Short, Right, Arc	1
1, 3-10, 18b, 19, 20, 21b, 22-28	113572	Fixed Height w/ Adjustable Handle Backrest Assembly, 10-13" Wide, Tall, Left, Arc	1
1, 3-10, 18b, 19, 20, 21a, 22-28	113573	Fixed Height w/ Adjustable Handle Backrest Assembly, 10-13" Wide, Tall, Right, Arc	1
1, 3-10, 18b, 19, 20, 21d, 22-28	113564	Fixed Height w/ Adjustable Handle Backrest Assembly, 14-18" Wide, Tall, Left, Arc	1
1, 3-10, 18b, 19, 20, 21c, 22-28	113565	Fixed Height w/ Adjustable Handle Backrest Assembly, 14-18" Wide, Tall, Right, Arc	1
1-10, 18b, 19, 20, 21b, 22-28	113576	Fixed Height w/ Adjustable Handle Backrest Assembly, Transit, 10-13" Wide, Tall, Left, Arc	1
1-10, 18b, 19, 20, 21a, 22-28	113577	Fixed Height w/ Adjustable Handle Backrest Assembly, Transit, 10-13" Wide, Tall, Right, Arc	1
1-10, 18b, 19, 20, 21d, 22-28	113568	Fixed Height w/ Adjustable Handle Backrest Assembly, Transit, 14-18" Wide, Tall, Left, Arc	1
1-10, 18b, 19, 20, 21c, 22-28	113569	Fixed Height w/ Adjustable Handle Backrest Assembly, Transit, 14-18" Wide, Tall, Right, Arc	1
1, 4, 10, 18a, 19, 20, 21b, 22, 23, 25, 26, 28, 29, 46, 47	113558	Fixed Height w/ Adjustable Handle Backrest Assembly, Non-Folding, 10-13" Wide, Short, Left, Arc	1
1, 4, 10, 18a, 19, 20, 21a, 22, 23, 25, 26, 28, 29, 46, 47	113559	Fixed Height w/ Adjustable Handle Backrest Assembly, Non-Folding, 10-13" Wide, Short, Right, Arc	1
1, 4, 10, 18a, 19, 20, 21d, 22, 23, 25, 26, 28, 29, 46, 47	113550	Fixed Height w/ Adjustable Handle Backrest Assembly, Non-Folding, 14-18" Wide, Short, Left, Arc	1
1, 4, 10, 18a, 19, 20, 21c, 22, 23, 25, 26, 28, 29, 46, 47	113551	Fixed Height w/ Adjustable Handle Backrest Assembly, Non-Folding, 14-18" Wide, Short, Right, Arc	1
1, 4, 10, 18a, 19, 20, 21b, 22, 23, 25, 26, 28, 29, 46, 47	113562	Fixed Height w/ Adjustable Handle Backrest Assembly, Transit, Non-Folding, 10-13" Wide, Short, Left, Arc	1
1, 4, 10, 18a, 19, 20, 21a, 22, 23, 25, 26, 28, 29, 46, 47	113563	Fixed Height w/ Adjustable Handle Backrest Assembly, Transit, Non-Folding, 10-13" Wide, Short, Right, Arc	1
1, 4, 10, 18a, 19, 20, 21d, 22, 23, 25, 26, 28, 29, 46, 47	113554	Fixed Height w/ Adjustable Handle Backrest Assembly, Transit, Non-Folding, 14-18" Wide, Short, Left, Arc	1

Item Number	Part Number	Description	Quantity
1, 4, 10, 18a, 19, 20, 21c, 22, 23, 25, 26, 28, 29, 46, 47	113555	Fixed Height w/ Adjustable Handle Backrest Assembly, Transit, Non-Folding, 14-18" Wide, Short, Right, Arc	1
1, 4, 10, 18a, 19, 20, 21b, 22, 23, 25, 26, 28, 29, 46, 47	113574	Fixed Height w/ Adjustable Handle Backrest Assembly, Non-Folding, 10-13" Wide, Tall, Left, Arc	1
1, 4, 10, 18a, 19, 20, 21a, 22, 23, 25, 26, 28, 29, 46, 47	113575	Fixed Height w/ Adjustable Handle Backrest Assembly, Non-Folding, 10-13" Wide, Tall, Right, Arc	1
1, 4, 10, 18b, 19, 20, 21d, 22, 23, 25, 26, 28, 29, 46, 47	113566	Fixed Height w/ Adjustable Handle Backrest Assembly, Non-Folding, 14-18" Wide, Tall, Left, Arc	1
1, 4, 10, 18b, 19, 20, 21c, 22, 23, 25, 26, 28, 29, 46, 47	113567	Fixed Height w/ Adjustable Handle Backrest Assembly, Non-Folding, 14-18" Wide, Tall, Right, Arc	1
1, 4, 10, 18a, 19, 20, 21b, 22, 23, 25, 26, 28, 29, 46, 47	113578	Fixed Height w/ Adjustable Handle Backrest Assembly, Transit, Non-Folding, 10-13" Wide, Tall, Left, Arc	1
1, 4, 10, 18a, 19, 20, 21a, 22, 23, 25, 26, 28, 29, 46, 47	113579	Fixed Height w/ Adjustable Handle Backrest Assembly, Transit, Non-Folding, 10-13" Wide, Tall, Right, Arc	1
1, 4, 10, 18b, 19, 20, 21d, 22, 23, 25, 26, 28, 29, 46, 47	113570	Fixed Height w/ Adjustable Handle Backrest Assembly, Transit, Non-Folding, 14-18" Wide, Tall, Left, Arc	1
1, 4, 10, 18b, 19, 20, 21c, 22, 23, 25, 26, 28, 29, 46, 47	113571	Fixed Height w/ Adjustable Handle Backrest Assembly, Transit, Non-Folding, 14-18" Wide, Tall, Right, Arc	1
3-8, 18a, 19, 20, 21a, 22-24, 26-28	113588	Fixed Height w/ Adjustable Handle Back Tube Assembly, 10-13" Wide, Short, Right, Arc	1
3-8, 18a, 19, 20, 21b, 22-24, 26-28	113589	Fixed Height w/ Adjustable Handle Back Tube Assembly, 10-13" Wide, Short, Left, Arc	1
3-8, 18a, 19, 20, 21c, 22-24, 26-28	113580	Fixed Height w/ Adjustable Handle Back Tube Assembly, 14-18" Wide, Short, Right, Arc	1
3-8, 18a, 19, 20, 21d, 22-24, 26-28	113581	Fixed Height w/ Adjustable Handle Back Tube Assembly, 14-18" Wide, Short, Left, Arc	1
3-8, 18b, 19, 20, 21a, 22-24, 26-28	113590	Fixed Height w/ Adjustable Handle Back Tube Assembly, 10-13" Wide, Tall, Right, Arc	1
3-8, 18b, 19, 20, 21b, 22-24, 26-28	113591	Fixed Height w/ Adjustable Handle Back Tube Assembly, 10-13" Wide, Tall, Left, Arc	1
3-8, 18b, 19, 20, 21c, 22-24, 26-28	113582	Fixed Height w/ Adjustable Handle Back Tube Assembly, 14-18" Wide, Tall, Right, Arc	1

Item Number	Part Number	Description	Quantity
3-8, 18b, 19, 20, 21d, 22-24, 26-28	113583	Fixed Height w/ Adjustable Handle Back Tube Assembly, 14-18" Wide, Tall, Left, Arc	1
4, 18a, 19, 20, 21a, 22, 23, 26, 28, 29	113592	Fixed Height w/ Adjustable Handle Back Tube Assembly, Non-Folding, 10-13" Wide, Short, Right, Arc	1
4, 18a, 19, 20, 21b, 22, 23, 26, 28, 29	113593	Fixed Height w/ Adjustable Handle Back Tube Assembly, Non-Folding, 10-13" Wide, Short, Left, Arc	1
4, 18a, 19, 20, 21c, 22, 23, 26, 28, 29	113584	Fixed Height w/ Adjustable Handle Back Tube Assembly, Non-Folding, 14-18" Wide, Short, Right, Arc	1
4, 18a, 19, 20, 21d, 22, 23, 26, 28, 29	113585	Fixed Height w/ Adjustable Handle Back Tube Assembly, Non-Folding, 14-18" Wide, Short, Left, Arc	1
4, 18b, 19, 20, 21a, 22, 23, 26, 28, 29	113594	Fixed Height w/ Adjustable Handle Back Tube Assembly, Non-Folding, 10-13" Wide, Tall, Right, Arc	1
4, 18b, 19, 20, 21b, 22, 23, 26, 28, 29	113595	Fixed Height w/ Adjustable Handle Back Tube Assembly, Non-Folding, 10-13" Wide, Tall, Left, Arc	1
4, 18b, 19, 20, 21c, 22, 23, 26, 28, 29	113586	Fixed Height w/ Adjustable Handle Back Tube Assembly, Non-Folding, 14-18" Wide, Tall, Right, Arc	1
4, 18b, 19, 20, 21d, 22, 23, 26, 28, 29	113587	Fixed Height w/ Adjustable Handle Back Tube Assembly, Non-Folding, 14-18" Wide, Tall, Left, Arc	1
1, 7, 9, 10, 25, 28	113596	Fixed Height w/ Adjustable Handle Backrest Hardware Kit, Standard, Arc	1
1, 10, 25, 28, 46, 47	113597	Fixed Height w/ Adjustable Handle Backrest Hardware Kit, Standard, Non-Folding, Arc	1
1, 2, 7, 9, 10, 25, 28	113598	Fixed Height w/ Adjustable Handle Backrest Hardware Kit, Transit, Arc	1
1, 2, 10, 25, 28, 46, 47	113599	Fixed Height w/ Adjustable Handle Backrest Hardware Kit, Transit, Non-Folding, Arc	1
30, 32, 34, 42, 44, 45	113600	Rigidizer Handle Pivot Assembly with Adapter with Foam Grip, Arc	1
31, 33, 34, 36-41, 44, 45	113601	Rigidizer Handle Latch Assembly with Adapter with Foam Grip, Arc	1
30-34, 35a, 36-45	113602	Rigidizer Handle Complete Assembly, Small and Large Width Ranges, Arc	1
30-34, 35b, 36-45	113603	Rigidizer Handle Complete Assembly, Medium and X-Large Width Ranges, Arc	1
11-17, 28	113546	Backrest Roller Kit, Arc	1
1	110190	Back Plate, Bearing Guide, Standard	1
2	113181	Transit Back Plate, Standard, Arc	1
3	111409	Lever, Latch, Backrest	1
4, 7	503834	Cover Plate, Latch Insert Kit	1
5	001895	Latch Insert, Folding Backrest	1

Item Number	Part Number	Description	Quantity
6	001896	Spring, Backrest Latch	1
7	001897	Washer, Dual, PSA	2
8	002513	Threaded Barrel, 5mm OD x M4	1
9	002738	Spacer .313 OD x .243 ID x 1.68 long	1
10	002595	Saddle, Dual, 1" OD X 1.5 SP	2
24	102694	Dowel Pin, M5 X 24, Blk Zn	1
25	101781	M6 x 50mm Partial Thread BHCS Blk ZC	6
26	100797	M6 x 40 BHCS BLK ZC	1
27	101818	M4 x 10 FHCS BLKZC w/Patch	2
28	100658	M6 Nylock Nut Blk Zn	1
29	002035	Insert, Backrest, Non-Folding	1
31	110259	Adapter, Latch, Rigidizer Handle	1
35a	110264	Cross Tube, Rigidizer Handle, 14-16 Wide <i>Used on small and large width ranges</i>	1
35b	110265	Cross Tube, Rigidizer Handle, 16-18 Wide <i>Used on medium and x-large width ranges</i>	1
40	110290	SHCS, M4 x 0.7 x 18, CLS12.9, BLZ, NYL, DIN912	1
41	101185	M6 x 14 CLS8.8 DIN7984 Low SHCS BLKZC	1
42	110291	E-RING, M13-M18, DIN6799, ZC	1
43	100669	M5 x 10 BTN SHCS BLKZC w/Patch	2
44	102614	M5 Split Lock Washer BLK ZC	2
45	101766	M5 x 10 CLS12.9 DIN912 SHCS PLN	2
46	101815	M8 x 50 BHCS Blk Zn	1
47	100659	M8 Nylock Nut Blk Zn	1