



Please read these instructions carefully before beginning the assembly. Failure to understand and follow assembly instructions may result in injury to technician and/or end user and may void the warranty. If you have any questions call Sunrise Medical Technical Support at +1 (800) 333-4000.

Parts included:

- | | |
|---------------------------------|-------------------------------|
| 1. BHCS M8 x 1.25 x 40 Blk (2x) | 6. Washer Nylon Black(2x) |
| 2. 5/16 Washer 1/8-in Thk (4x) | 7. BHCS M8 x 1.25 (2x) |
| 3. Transit Bushing (2x) | 8. Transit Pivot (2x) |
| 4. Curved Washer Spring (2x) | 9. Front Transit Bracket (2x) |
| 5. Transit Loop Rear (2x) | 10. FHCS M6 x 1 x 16 (4x) |

Required tools:

- | | |
|-------------------------|-------------------------------|
| 1. 4mm & 5mm Hex Keys | 3. Torque Wrench and Hex Bits |
| 2. 21mm Open End Wrench | |

A. PRE-ASSEMBLY

- Place your wheelchair on a Table or Flat work surface for best assembly results.
- Remove the wheels, armrests, and any other obstructions to gain access to the frame holes (A) that will secure the Rear Transit Bracket (5).

B. REAR TRANSIT BRACKET ASSEMBLY

- Assemble the brackets and hardware for both sides of the chair as shown. DO NOT use the hardware screw (7) and accompanying washer (2) unless you intend to attach a WC-19 approved Lap Belt. (Fig 1)
- Mount the Rear Transit assembly using Washer (2) and Button Head Cap Screw (3). (Fig 1)
- Mount the Pelvic Belt between Screw (7) and Pivot (8). The washer (2) and button head screw (7) include a patch that is intended to be permanent once placed.
- Torque all hardware (7) to 16.3 Nm [144 in-lbs].
- Repeat this process for the other side of the wheelchair.



C. PLACE THE FRONT TRANSIT BRACKET

- Place front transit bracket (9) on frame location (B) and attach with Flat Head Cap Screws (10) into the frame (These replace the existing button head cap screws). (Fig 2)
- Finish by tightening the Flat Head Cap Screws (10) to a maximum torque of 6.8 Nm [60 in-lbs].
- Repeat this process for the other side of the wheelchair.

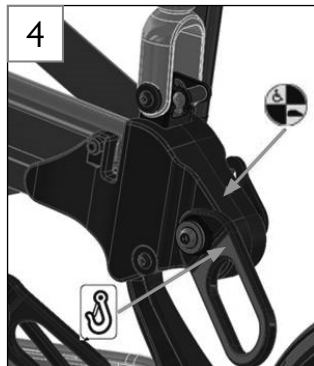
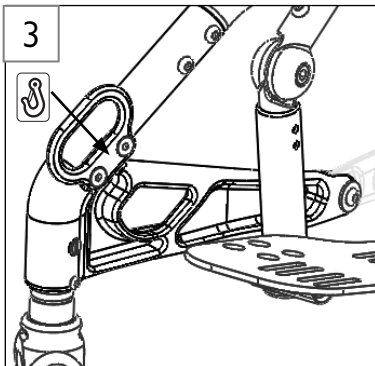
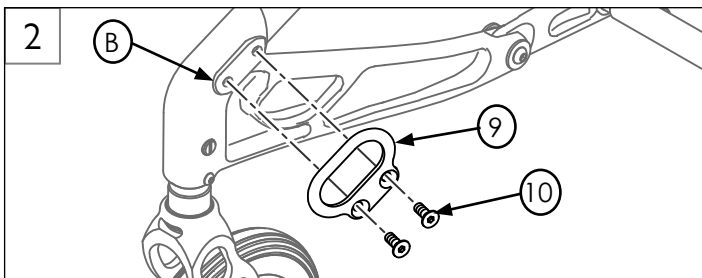
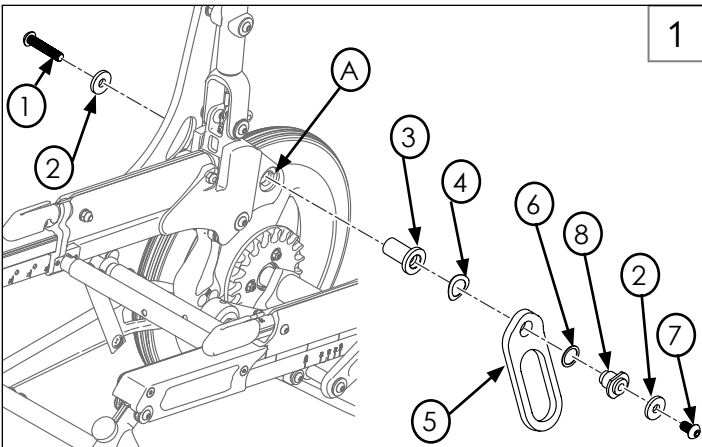


D. TRANSIT DECALS

- The placement of transit hook location decals is essential for the safety or the rider and compliance with WC-19 standards. Note: if transit decals are not already on transit brackets, ensure decals are placed on Front and Rear Transit Brackets as instructed below.
 - Peel the backing from the Front Transit Hook decals and place on each side of chair in the location shown. (Fig 3)
 - Peel the backing from the Rear Transit Hook decals and place on both sides of chair in the location shown. (Fig 4)
 - Peel the backing from the WC-19 Transit decals and place on both sides of chair in the location shown. (Fig 4)

E. CHECKOUT

- Double-check the orientation and torque on all hardware.
 - Check that front and rear transit brackets have been positioned evenly.
 - Using a torque wrench, check front and rear screws for correct torque.



⚠️ DEALER/TECHNICIAN WARNING

Attention dealers and qualified technicians, do not operate or service this wheelchair without first reading the owners manual. If you do not understand the instructions and warnings in the owners manual please contact the Sunrise Medical Technical Service Department before operating and/or servicing the Zippie wheelchair. Failure to do so may result in damage and/or injury.

Find more information and important warnings see the wheelchair owner's manual or at: www.SunriseMedical.com.

Sunrise Medical 2842 N. Business Park Ave Fresno, CA 93727 USA

Customer service: +1(800) 333-4000
or visit www.SunriseMedical.com

