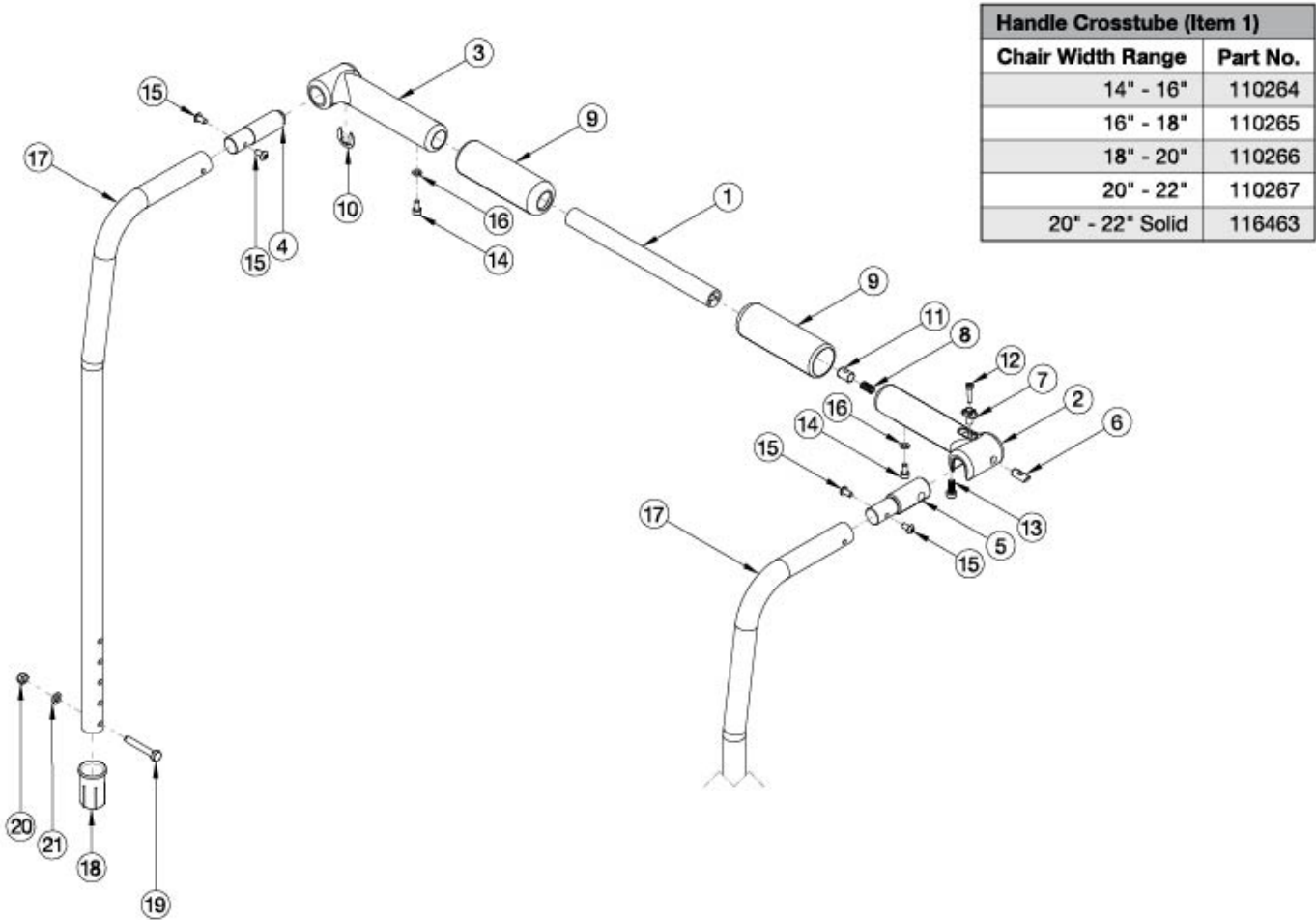


Catalyst E Backrest - 8 Degree Bend with Rigidizer Bar



Item Number	Part Number	Description	Quantity
1a, 2-16, 17	116388	8 Degree Backcane, Folding Handle, 14"-16"W, Cat E	1
1b, 2-16, 17	116389	8 Degree Backcane, Folding Handle, 16"-18"W, Cat E	1
1c, 2-16, 17	116390	8 Degree Backcane, Folding Handle, 18"-20"W, Cat E	1
1d, 2-16, 17	116391	8 Degree Backcane, Folding Handle, 20"-22"W, Cat E	1
1a, 2-16	116412	Folding Handle, 14"-16"W, Cat E	1
1b, 2-16	116413	Folding Handle, 16"-18"W, Cat E	1
1c, 2-16	116414	Folding Handle, 18"-20"W, Cat E	1
1d, 2-16	116415	Folding Handle, 20"-22"W, Cat E	1
1a	110264	Cross Tube, Rigidizer Handle, 14-16 Wide	1

Item Number	Part Number	Description	Quantity
1b	110265	Cross Tube, Rigidizer Handle, 16-18 Wide	1
1c	110266	Cross Tube, Rigidizer Handle, 18-20 Wide	1
1d	110267	Cross Tube, Rigidizer Handle, 20-22 Wide <i>Replaces part 116163</i>	1
2	110261	Latch, Rigidizer Handle	1
3	110260	Pivot, Rigidizer Handle	1
4	116061	Adapter, Pivot, Rigidizer Handle, Catalyst E	1
5	116062	Adapter, Latch, Rigidizer Handle, Catalyst E	1
6	110263	Pin, Latch, Rigidizer Handle	1
7	110262	Button, Latch, Rigidizer Handle	1
10	110291	E-RING, M13-M18, DIN6799, ZC	1
11	102768	M6 Barrel Nut	1
12	110290	SHCS, M4 x 0.7 x 18, CLS12.9, BLZ, NYL, DIN912	1
13	101185	M6 x 14 CLS8.8 DIN7984 Low SHCS BLKZC	1
14	101766	M5 X 10 Cls12.9 Din912 Shcs Pln	1
15	100669	M5 x 10 BTN SHCS BLKZC w/Patch	1
16	102614	M5 Split Lock Washer BLK ZC	1
17	116070	8 Degree Backrest Tube, Rigidizer, Cat E	1
18	111965	Frame Sleeve, Angle Adjustable Backrest	1
19	100860	M6 X 35 Hhcs P/Thd Zc	1
20	100658	M6 Nylock Nut Blk Zn	1
21	100746	M6 Flat Washer Blk Zn	1