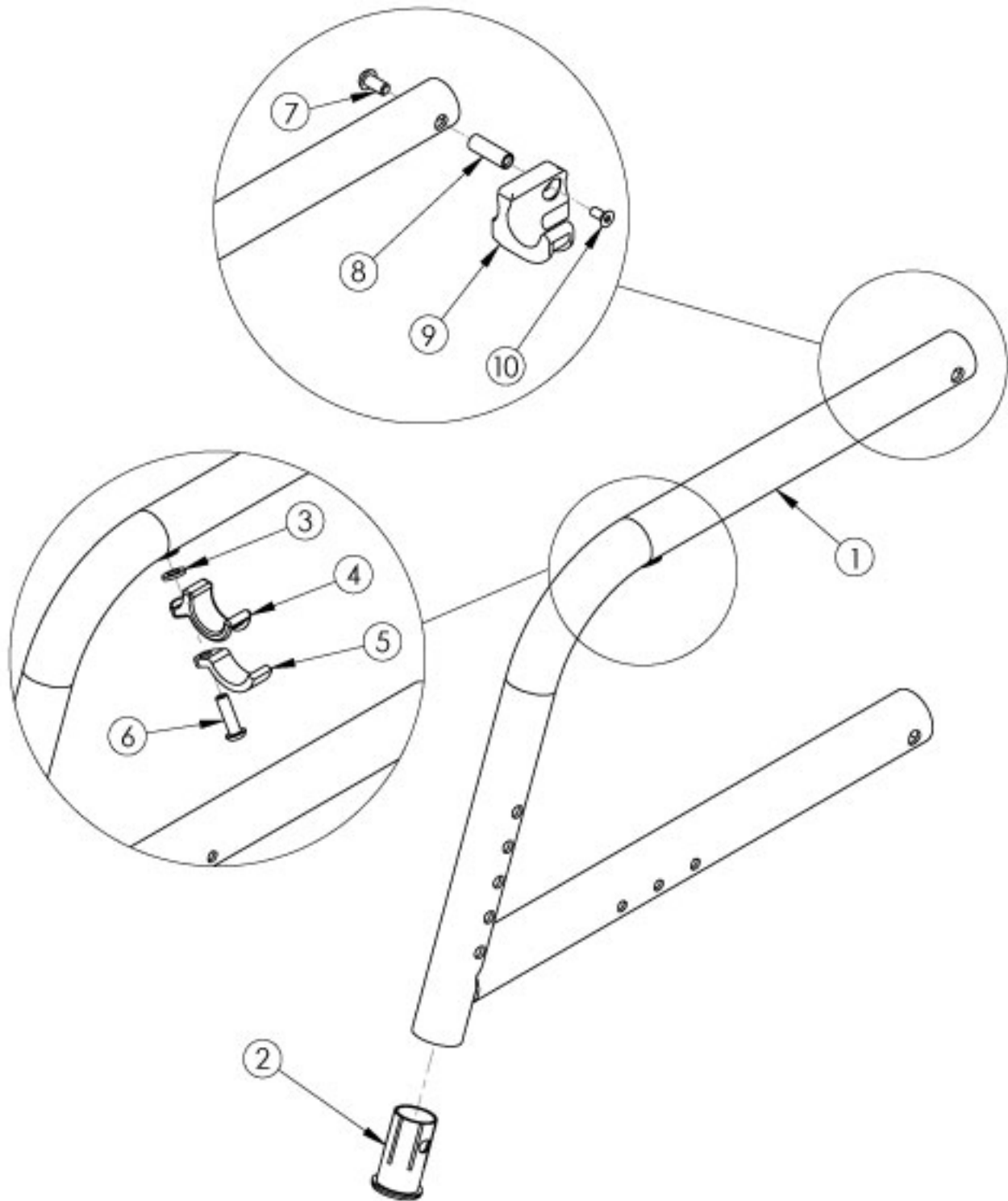


# Catalyst 70 Degree Fixed Front Frame



<p>Frame assemblies are based on Seat Depth. If switching to a new Seat Depth, new Height Adjustable T-Arms or Height Adjustable Flip Back T-Arms may be needed.<p>

If chair has Flip Back or the discontinued Height Adjustable Flip Back armrests, select a frame assembly with the Flip Back Arm Modification. This modification does not apply to Height Adjustable Flip Back T-Arms. <p>

If retrofitting from a Swing Away or Super Low Front Frame, new caster housings and attaching hardware are required.

Item Number	Part Number	Description	Quantity	Retail
3, 4, 5, 6a	501005	Seat Hook and Support Hardware Kit, Standard, Catalyst <i>Used with Standard Weight Capacity. This kit contains quantity of 1 each</i>	1	\$17.40
3, 4, 5, 6b	114528	Seat Hook and Support Hardware Kit, Standard, for Heavy Duty Catalyst <i>Used with Heavy Duty / 350 lbs Weight Capacity. This kit contains quantity of 1 each</i>	1	\$17.93
7, 8, 9a, 10	111569	Seat Hook and Support Hardware Kit, Seating System, Right Side, Catalyst <i>This kit contains quantity of 1 each</i>	1	\$29.56
7, 8, 9b, 10	111570	Seat Hook and Support Hardware Kit, Seating System, Left Side, Catalyst <i>This kit contains quantity of 1 each</i>	1	\$29.56
1a, 2	100138_ _ _	Frame Assm Cat Front Fixed 70 Left 14 _ _ _	1	\$130.34 - \$199.43
1b, 2	100139_ _ _	Frame Assm Cat Front Fixed 70 Left 15 _ _ _	1	\$130.34 - \$199.43
1c, 2	100140_ _ _	Frame Assm Cat Front Fixed 70 Left 16 _ _ _	1	\$130.34 - \$199.43
1d, 2	100141_ _ _	Frame Assm Cat Front Fixed 70 Left 17 _ _ _	1	\$130.34 - \$199.43
1e, 2	501613_ _ _	Frame Assm Cat Front Fixed 70 Left 18 _ _ _	1	\$130.34 - \$199.43
1f, 2	501614_ _ _	Frame Assm Cat Front Fixed 70 Left 19 _ _ _	1	\$130.34 - \$199.43
1g, 2	100142_ _ _	Frame Assm Cat Front Fixed 70 Left 20 _ _ _	1	\$130.34 - \$199.43
1h, 2	100175_ _ _	Frame Assm Cat Front Fixed 70 Right 14 _ _ _	1	\$130.34 - \$199.43
1i, 2	100176_ _ _	Frame Assm Cat Front Fixed 70 Right 15 _ _ _	1	\$130.34 - \$199.43
1j, 2	100177_ _ _	Frame Assm Cat Front Fixed 70 Right 16 _ _ _	1	\$130.34 - \$199.43
1k, 2	100178_ _ _	Frame Assm Cat Front Fixed 70 Right 17 _ _ _	1	\$130.34 - \$199.43
1l, 2	501615_ _ _	Frame Assm Cat Front Fixed 70 Right 18 _ _ _	1	\$130.34 - \$199.43
1m, 2	501616_ _ _	Frame Assm Cat Front Fixed 70 Right 19 _ _ _	1	\$130.34 - \$199.43
1n, 2	100179_ _ _	Frame Assm Cat Front Fixed 70 Right 20 _ _ _	1	\$130.34 - \$199.43
1c, 2	114310_ _ _	Frame Assm Cat Front with Flip Back Arm Modification Fixed 70 Left 16 _ _ _	1	\$130.34 - \$199.43
1d, 2	114311_ _ _	Frame Assm Cat Front with Flip Back Arm Modification Fixed 70 Left 17 _ _ _	1	\$130.34 - \$199.43
1e, 2	114351_ _ _	Frame Assm Cat Front with Flip Back Arm Modification Fixed 70 Left 18 _ _ _	1	\$130.34 - \$199.43
1f, 2	114352_ _ _	Frame Assm Cat Front with Flip Back Arm Modification Fixed 70 Left 19 _ _ _	1	\$130.34 - \$199.43
1g, 2	114312_ _ _	Frame Assm Cat Front with Flip Back Arm Modification Fixed 70 Left 20 _ _ _	1	\$130.34 - \$199.43
1j, 2	114320_ _ _	Frame Assm Cat Front with Flip Back Arm Modification Fixed 70 Right 16 _ _ _	1	\$130.34 - \$199.43

Item Number	Part Number	Description	Quantity	Retail
1k, 2	114321_ _ _	Frame Assm Cat Front with Flip Back Arm Modification Fixed 70 Right 17 _ _ _	1	\$130.34 - \$199.43
1l, 2	114353_ _ _	Frame Assm Cat Front with Flip Back Arm Modification Fixed 70 Right 18 _ _ _	1	\$130.34 - \$199.43
1m, 2	114354_ _ _	Frame Assm Cat Front with Flip Back Arm Modification Fixed 70 Right 19 _ _ _	1	\$130.34 - \$199.43
1n, 2	114322_ _ _	Frame Assm Cat Front with Flip Back Arm Modification Fixed 70 Right 20 _ _ _	1	\$130.34 - \$199.43
2	000034	Sleeve 3/4" x 1 1/2"	1	\$3.66
3	100831	1/2" Washer OD .040" Thick	1	\$1.58
4	000003	Seat Hook, Catalyst	1	\$7.70
5	000004	Seat Hook Support, Catalyst	1	\$6.55
6a	100668	M6 x 20 CLS10.9 BTN SHCS ZC w/Patch <i>Used with Standard Weight Capacity</i>	1	\$1.58
6b	101180	M6 x 20 SHCS BLK ZC <i>Used with Heavy Duty / 350 lbs Weight Capacity</i>	1	\$2.10
7	100667	M6 x 12 BTN SHCS BLKZC w/Patch	1	\$1.58
8	000065	M6 x 23.68 Threaded Barrel	1	\$4.13
9a	000960R	Seat Hook Open Frame Right Front Frame / Left Rear Frame, Catalyst	1	\$21.75
9b	000960L	Seat Hook Open Frame Left Front Frame / Right Rear Frame, Catalyst	1	\$21.75
10	101594	M6 x 14 CLS10.9 DIN7991 FSHCS BLKZC w/Patch	1	\$2.10

Matte Finish	
Code	Color Name
CGM	Charcoal Gray
EGM	Emerald Green
GGM	Graphite Gray*
IBM	Iridescent Burgundy
INM	Iridescent Navy
AGM	Military Green**
RRM	Retro Red
RBM	Royal Blue
SBM	Shadow Black
SWM	Smooth White

\* Discontinued Color

\*\* Formerly called Army Green

Gloss Finish	
Code	Color Name
BLK	Black
BLU	Blue
SKY	Blue Skies
BRO	Bright Orange*
PNK	Bubblegum Pink
BUR	Burgundy*
CBL	Candy Blue
PUR	Candy Purple
RED	Candy Red
COP	Copper
DPR	Deep Purple*
EBL	Electric Blue*
GRN	Forest Green*
FUS	Fuchsia*
GSM	Granny Smith
MTF	Metallic Fuchsia*
MOR	Metallic Orange
ORG	Orange*
SAP	Sapphire*
SIL	Silver
TEA	Teal
YLW	Yellow
FLM	Graphic Image Transfer