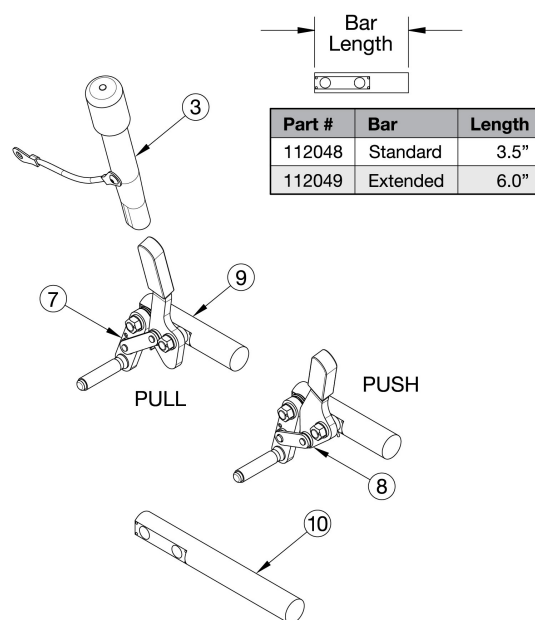
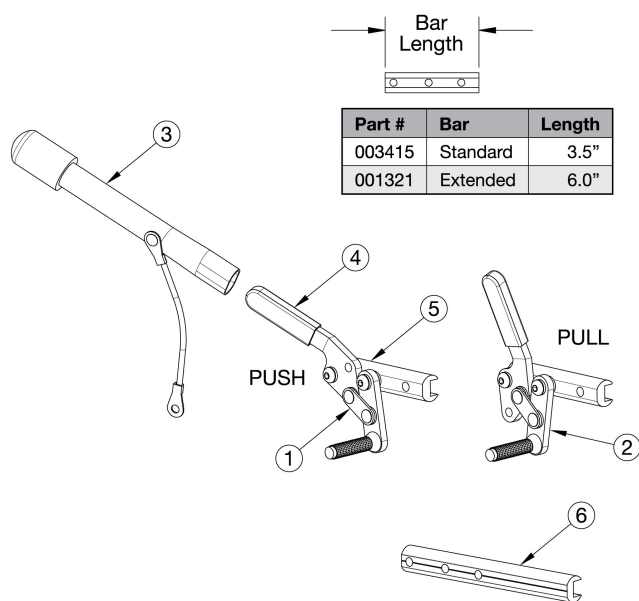


Ethos Push and Pull to Lock



Notice: Chair configuration review required prior to parts being quoted or ordered. If adding Wheel Locks to a chair, new Front ISO Towers are required.

Item Number	Part Number	Description	Quantity
1a, 4b, 5	200251	Wheel Lock Push Right	1
1b, 4b, 5	200252	Wheel Lock Push Left	1
1a, 1b, 4b, 5	124906	Wheel Lock Assembly, Push PAIR	1
2a, 4b, 5	200253	Wheel Lock Pull Right	1
2b, 4b, 5	200254	Wheel Lock Pull Left	1
2a, 2b, 4b, 5	124907	Wheel Lock Assembly, Pull PAIR	1
1a, 3, 4a, 5	200410	Wheel Lock Push w/ Extension Right	1
1b, 3, 4a, 5	200411	Wheel Lock Push w/ Extension Left	1
1a, 1b, 3, 4a, 5	124908	Wheel Lock Assembly, Push Extension PAIR	1
2a, 3, 4a, 5	200412	Wheel Lock Pull w/ Extension Right	1
2b, 3, 4a, 5	200413	Wheel Lock Pull w/ Extension Left	1
2a, 2b, 3, 4a, 5	124909	Wheel Lock Assembly, Pull Extension PAIR	1
3	200369	Wheel Lock Extension	1

Item Number	Part Number	Description	Quantity
4a	102336	Wheel Lock Cover Plastic <i>Used with Kits 200251 - 200254.</i>	1
4b	111247	Wheel Lock Cover Plastic <i>Used with Kits 200410 - 200413.</i>	1
5	003415	Standard Wheel Lock Bar	1
6	001321	Wheel Lock Mount Bar Extended <i>Used as needed</i>	1
8-9	124094	Thru Post Wheel Lock Push Right Standard <i>If invoiced prior to 7/2025 pair of wheel lock will be needed</i>	1
8-9	124095	Thru Post Wheel Lock Push Left Standard <i>If invoiced prior to 7/2025 pair of wheel lock will be needed</i>	1
8 - 9	124896	Thru Post Wheel Lock, Push PAIR <i>If invoiced prior to 7/2025 pair of wheel lock will be needed</i>	1
7, 9	124098	Thru Post Wheel Lock Pull Right Standard <i>If invoiced prior to 7/2025 pair of wheel lock will be needed</i>	1
7, 9	124099	Thru Post Wheel Lock Pull Left Standard <i>If invoiced prior to 7/2025 pair of wheel lock will be needed</i>	1
7, 9	124899	Thru Post Wheel Lock, Pull PAIR <i>If invoiced prior to 7/2025 pair of wheel lock will be needed</i>	1
3, 8-9	124096	Thru Post Wheel Lock Push Right with Extension Handle <i>If invoiced prior to 7/2025 pair of wheel lock will be needed</i>	1
3, 8-9	124097	Thru Post Wheel Lock Push Left with Extension Handle <i>If invoiced prior to 7/2025 pair of wheel lock will be needed</i>	1
3, 8 - 9	124901	Thru Post Wheel Lock, Push w/ Extension PAIR <i>If invoiced prior to 7/2025 pair of wheel lock will be needed</i>	1
3, 7, 9	124100	Thru Post Wheel Lock Pull Right with Extension Handle <i>If invoiced prior to 7/2025 pair of wheel lock will be needed</i>	1
3, 7, 9	124101	Thru Post Wheel Lock Pull Left with Extension Handle <i>If invoiced prior to 7/2025 pair of wheel lock will be needed</i>	1
3, 7, 9	124903	Thru Post Wheel Lock, Pull w/ Extension PAIR <i>If invoiced prior to 7/2025 pair of wheel lock will be needed</i>	1
10	112049	Wheel Lock Mount Bar Extended <i>Used as needed</i>	1