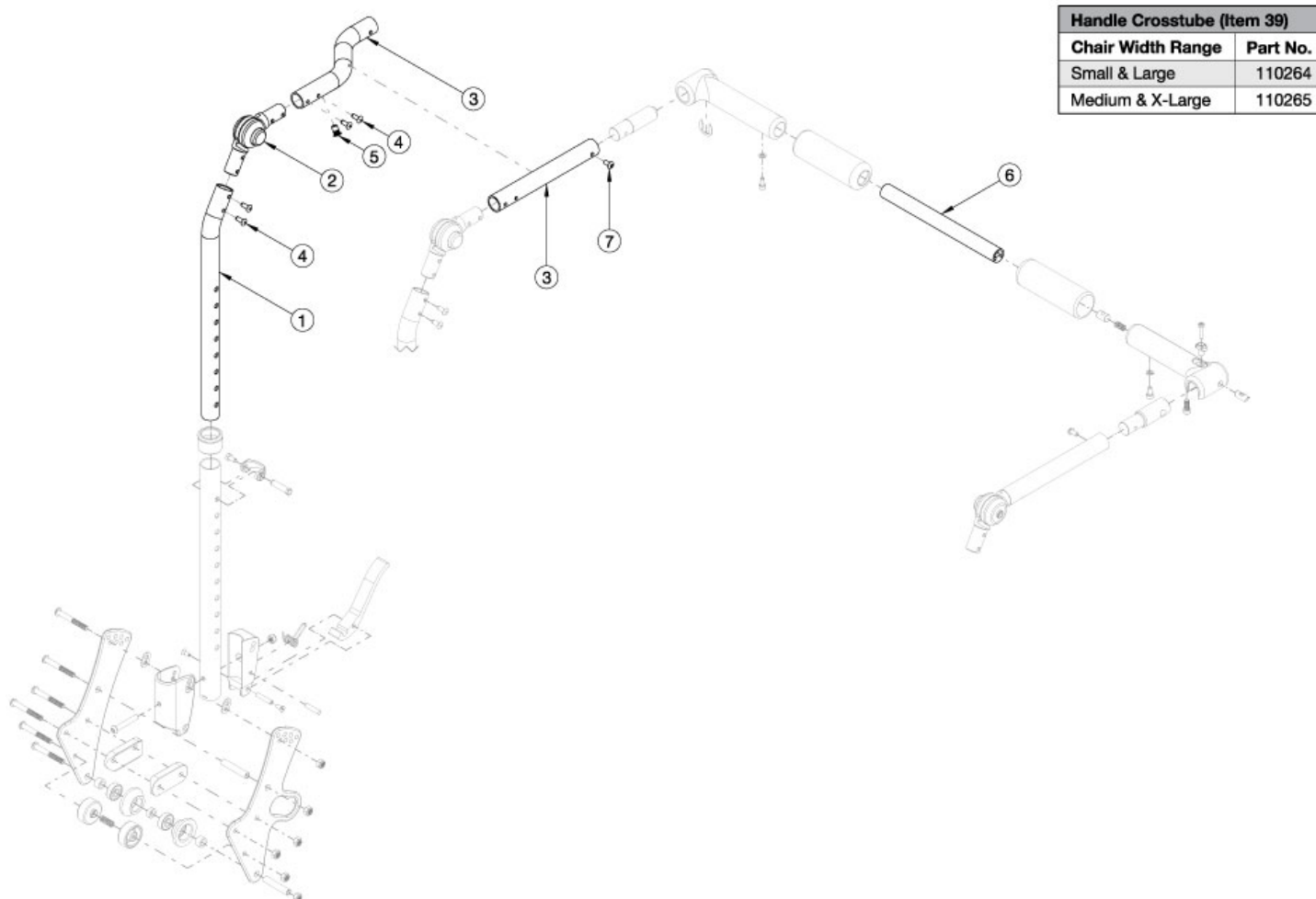


Arc Adjustable Height with Folding Adjustable Handle Backrest - Growth



Callout #3: 10"-13" widths receive the curved tube and 14"-18" widths receive the straight shaped tube. When changing backrest types, check to see if new cables and tilt triggers are needed for both foot and hand tilts. If chair was invoiced prior to 12/18/23, an upper back tube assembly is required. If chair was invoiced after to 12/18/23, upper back tube assembly parts can now be purchased individually

Item Number	Part Number	Description	Quantity
1, 2, 3b, 4, 5, 7	113608	Height Adjustable Upper Back Tube Assembly, 10-13" Wide, Left, Arc	1
1, 2, 3a, 4, 5, 7	113609	Height Adjustable Upper Back Tube Assembly, 10-13" Wide, Right, Arc	1
1, 2, 3d, 4, 5, 7	113610	Height Adjustable Upper Back Tube Assembly, 14-18" Wide, Left, Arc	1
1, 2, 3c, 4, 5, 7	113611	Height Adjustable Upper Back Tube Assembly, 14-18" Wide, Right, Arc	1
6a	110264	Cross Tube, Rigidizer Handle, 14-16 Wide <i>Used on small and large width ranges</i>	1

Item Number	Part Number	Description	Quantity
6b	110265	Cross Tube, Rigidizer Handle, 16-18 Wide <i>Used on medium and x-large width ranges</i>	1