

PushTracker E2—Initial setup

NOTE: WiFi is required for set-up

1 PushTracker E2 & Wear OS

1. Download *Wear OS* on your Android or Apple phone



2. Read/accept Google terms of service & enable Bluetooth® sharing

3. Turn on watch, select language

4. Read/accept Mobvoi policy

5. Pair/connect PushTracker E2 to phone

6. Connect your watch to WiFi

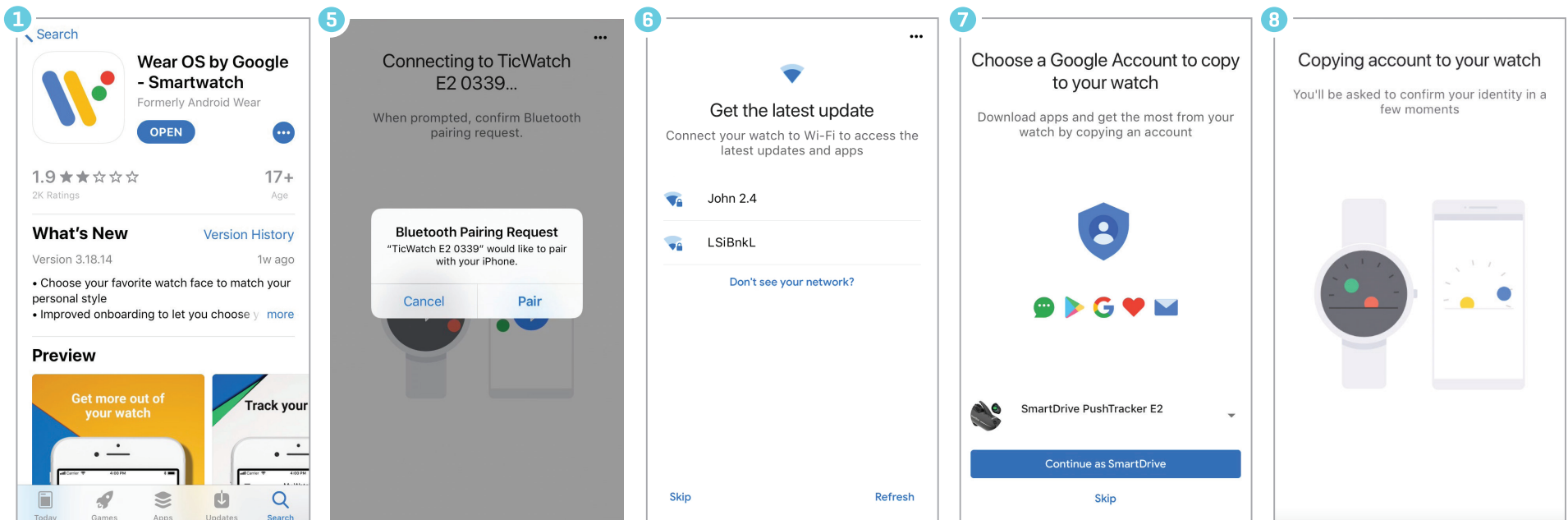
7. Choose/sign in/create Google account

8. Initialization

9. Wear OS tutorial

Smartphone

PushTracker E2

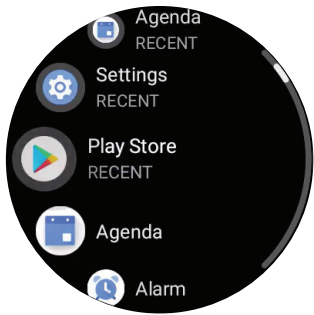


NOTE: For demos or anyone ordering a PushTracker E2 to retrofit onto their existing SmartDrive MX2+, the firmware needs to be updated to achieve full functionality. Follow the steps above, then use your PushTracker E2 to update your SmartDrive MX2+ unit.

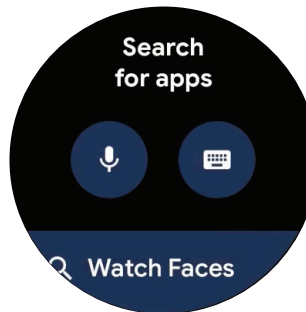
PushTracker E2—Initial setup

NOTE: WiFi is required for set-up

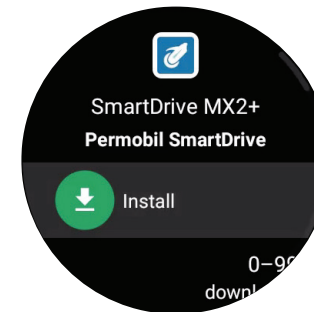
2 Download SmartDrive MX2+ app



- 1 Go to Google Play Store on PushTracker E2

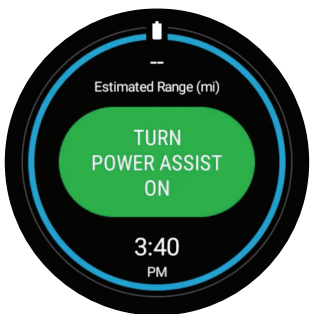


- 2 Search "SmartDrive MX2+"

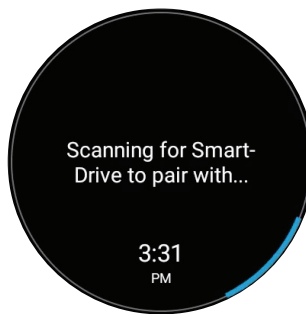


- 3 Install & launch SmartDrive MX2+ app

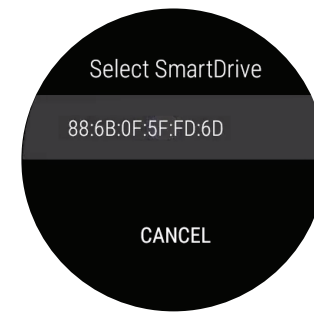
3 Pair & go



- 1 With your SmartDrive MX2+ unit turned on, launch the SmartDrive MX2+ app and touch "TURN POWER ASSIST ON"



- 2 Pair with SmartDrive MX2+ by selecting the number listed on the screen. You can only pair when one SmartDrive MX2+ is present



- 3 You are now paired & connected!

NOTE: You can also pair to your SmartDrive MX2+ through the settings menu within the app.

For more instructions check out the PushTracker E2 how-to videos at permobilus.com/howtosmartdrive.

**Wear OS by Google, iPhone, Android, Bluetooth and Google Play are trademarks or registered trademarks of their respective owners.*