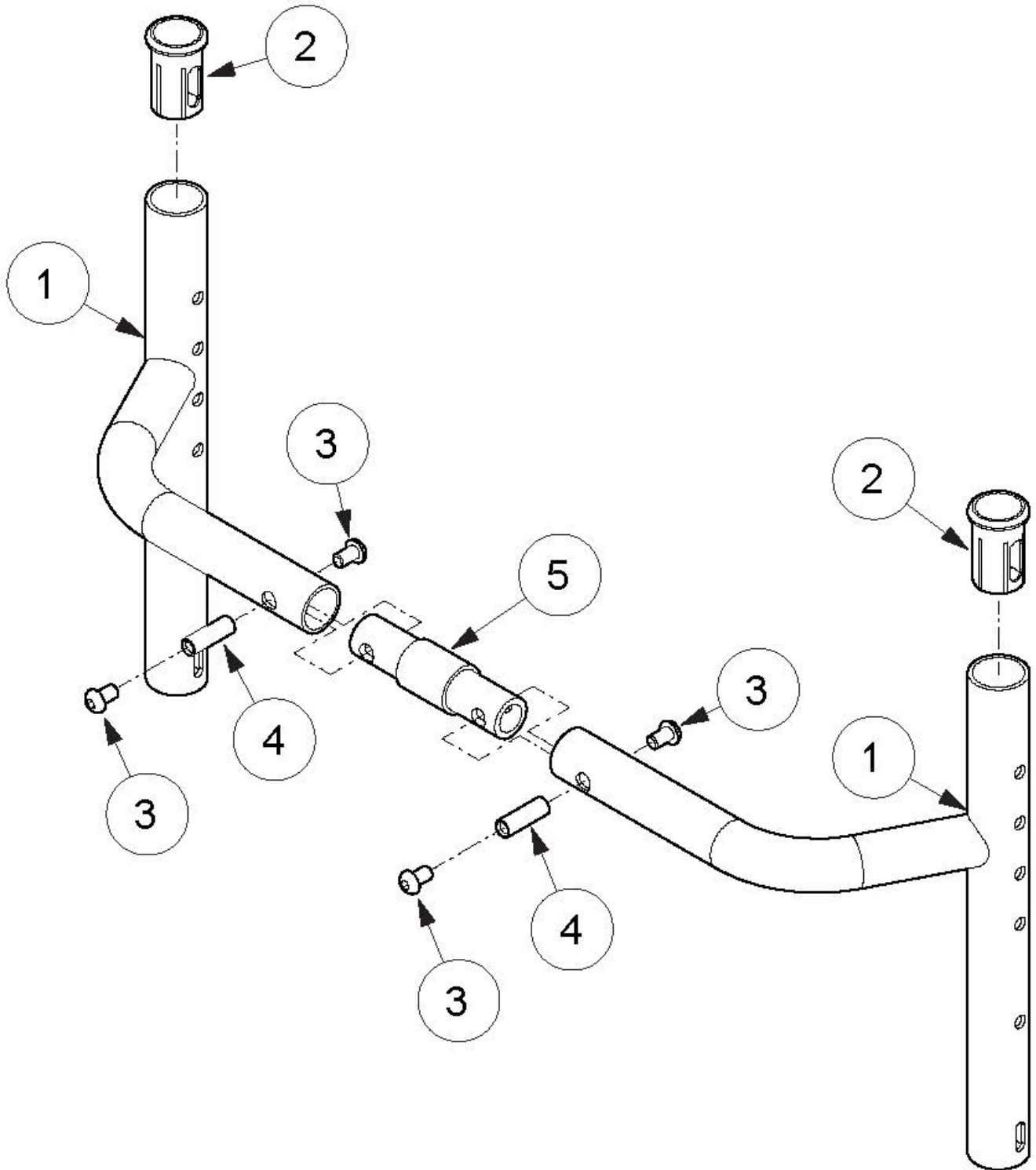


# (Discontinued) Rogue with XP Option Adjustable Height Backrest with Non-Adjustable Rigidizer Bar



*This Rogue with XP Option Backrest is discontinued as of July 25th, 2016 Parts on this page are only for the Discontinued Rogue with XP Option frame/backrest. If you have a Rogue XP, use the Rogue XP Backrest pages for your replacement parts.*

<b>Item Number</b>	<b>Part Number</b>	<b>Description</b>	<b>Quantity</b>
1a, 3, 4, 5a	110304	12" Rigid Backrest, 0" Connector and Hardware	1
1a, 3, 4, 5b	110305	12" Rigid Backrest, 1" Connector and Hardware	1
1a, 3, 4, 5c	110306	12" Rigid Backrest, 2" Connector and Hardware	1
1a, 3, 4, 5d	110307	12" Rigid Backrest, 3" Connector and Hardware	1
1b, 3, 4, 5a	110308	13" Rigid Backrest, 0" Connector and Hardware	1
1b, 3, 4, 5b	110309	13" Rigid Backrest, 1" Connector and Hardware	1
1b, 3, 4, 5c	110310	13" Rigid Backrest, 2" Connector and Hardware	1
1b, 3, 4, 5d	110311	13" Rigid Backrest, 3" Connector and Hardware	1
1c, 3, 4, 5a	110312	14" Rigid Backrest, 0" Connector and Hardware	1
1c, 3, 4, 5b	110313	14" Rigid Backrest, 1" Connector and Hardware	1
1c, 3, 4, 5c	110314	14" Rigid Backrest, 2" Connector and Hardware	1
1c, 3, 4, 5d	110315	14" Rigid Backrest, 3" Connector and Hardware	1
1d, 3, 4, 5a	110316	15" Rigid Backrest, 0" Connector and Hardware	1
1d, 3, 4, 5b	110317	15" Rigid Backrest, 1" Connector and Hardware	1
1d, 3, 4, 5c	110318	15" Rigid Backrest, 2" Connector and Hardware	1
1d, 3, 4, 5d	110319	15" Rigid Backrest, 3" Connector and Hardware	1
1e, 3, 4, 5a	110320	16" Rigid Backrest, 0" Connector and Hardware	1
1e, 3, 4, 5b	110321	16" Rigid Backrest, 1" Connector and Hardware	1
1e, 3, 4, 5c	110322	16" Rigid Backrest, 2" Connector and Hardware	1
1e, 3, 4, 5d	110323	16" Rigid Backrest, 3" Connector and Hardware	1
2	000034	Sleeve 3/4" x 1 1/2"	2
3	101184	M6 x 10 BTN SHCS BLKZC w/Patch	4
4	000669	M6 x 20.5 Threaded Barrel	2
5a	000589	Backrest Connector 0" LW/RG	1
5b	000590	Backrest Connector 1" LW/RG	1
5c	000591	Backrest Connector 2" LW/RG	1

Item Number	Part Number	Description	Quantity
5d	000592	Backrest Connector 3" LW/RG	1
3, 4, 5b	502318	Backrest Connector Assembly 1" w/ Hardware, Rigid	1
3, 4, 5c	502319	Backrest Connector Assembly 2" w/ Hardware, Rigid	1
3, 4, 5d	502320	Backrest Connector Assembly 3" w/ Hardware, Rigid	1