

# TOILEVATOR™ & TOILEVATOR™ GRANDE

## INSTALLATION INSTRUCTIONS

PLEASE READ THIS ENTIRE MANUAL BEFORE INSTALLING THE TOILEVATOR™.



U.S. Patent Numbers 5,303,430 and 5,432,957. Canadian Patent Number 2,123,939

### LIST OF COMPONENTS SUPPLIED:

- 1 - Spacer Base ● 1 - Soil Pipe Extension ● 2 - Long Closet Bolts ● 4 - Hexagon Nuts
- 4 - Flat Washers ● 2 - Plastic Washers ● 2 - Trim Caps ● 2 - Wax Seals
- 1 - Extended Flexible Water Hose ● 1 - Installation Instructions

- 500 lbs. (227 kg) maximum weight capacity.
- Will fit toilets where the base is as close as 7" (18 cm) to the wall.
- The TOILEVATOR™ can also be painted to match your existing toilet, we suggest using a primer suitable for ABS plastic.

### IMPORTANT INSTALLATION NOTES:

- We recommend that you consult a plumber for installation.
- The floor connecting flange may need to be leveled with the floor before beginning installation

A J HART   
*Excellence in Healthcare*

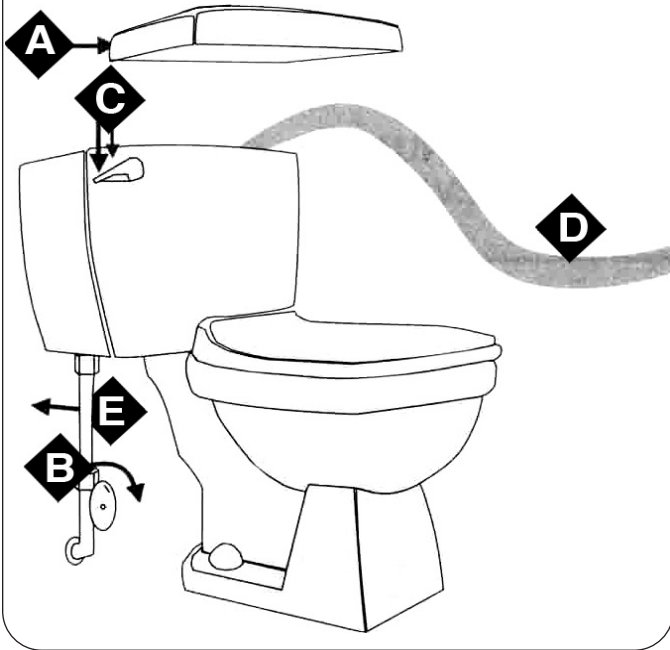
Address is: P.O. Box 935, Kleinburg, Ontario, CANADA L0J 1C0

Toll Free: 888-726-4646

[ajhartgroup.com](http://ajhartgroup.com)

# TOILEVATOR™ & TOILEVATOR™ GRANDE

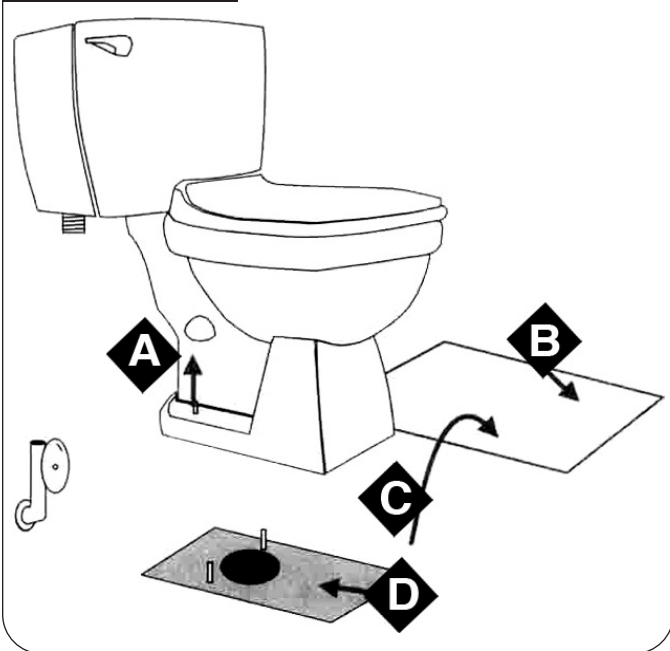
## STEP 1



### STEP 1: *Disconnect Water Line from Toilet and Empty Toilet of Water*

- A. Remove the toilet tank lid and put it in a safe place, out of the way.
- B. Turn the toilet tank water valve to the closed position. This valve should be located on the wall behind the toilet, to the left and near the floor. To close the valve, turn it clockwise.
- C. Flush twice to empty as much water from the toilet and tank as possible and to ensure that the water inlet valve has been properly closed.
- D. Remove any remaining water in the tank and toilet bowl with a sponge, bailer or a wet/dry vacuum.
- E. Disconnect the water hose from the toilet tank and wall valve. Use a wrench if needed.

## STEP 2



### STEP 2: *Disassemble Toilet from Floor*

- A. Remove the trim caps that cover the closet bolts. Use a screwdriver if needed. Closet bolts secure the toilet to the floor and are located on the base of the toilet near the floor. Remove the nuts from the closet bolts.
- B. Lay newspaper and perhaps some plastic on the floor, to place the toilet and tank on.
- C. Remove the toilet from its mount and place it on the newspaper. To make handling of the toilet easier, you may wish to remove the toilet tank. Disassemble the tank from the toilet base by removing the fasteners located in the bottom of the toilet tank. Or, you may wish to get help from another person. With one person on each side of the toilet, remove the entire toilet tank and toilet assembly from the closet flange and place the assembly on the newspaper.

**NOTE:** If you have difficulty removing the toilet, you may need to break the seal to the closet flange by rocking the toilet from side to side.

D. Remove any remaining old wax or foam seal from the closet flange and toilet underside.

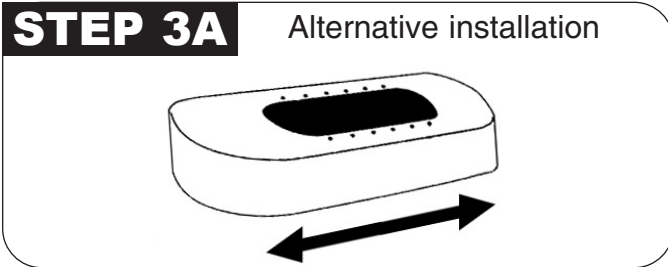
**NOTE:** Be careful not to drop anything down the open soil pipe. It is a good idea to temporarily block the open pipe.

# TOILEVATOR™ & TOILEVATOR™ GRANDE

## STEP 3



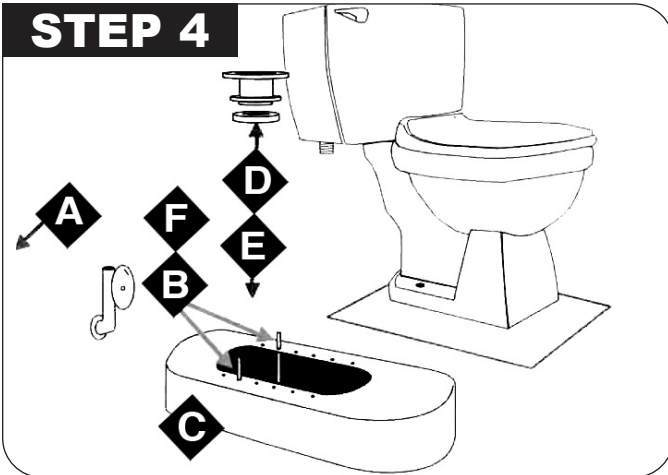
## STEP 3A Alternative installation



### STEP 3: Locate the Correct Spacer Base Adjustment Holes

- Place the base flat on the floor so that the lettering is showing. Note that there are 6 pairs of numbered holes. Also note that one end is labeled A, and the other end is labeled B. The spacer base is reversible, either end can go to the front, which means you have a selection of 12 positions. *Installer Tip:* Reversing the Toilevator® can allow for a "ledge" for children to rest their feet on, if desired.
- Find the adjustment position by placing the toilet on top of the spacer base. To correctly find the adjustment position, the closet bolt holes of the toilet (those holes on either side of the soil pipe opening if the toilet has more than one set of bolt holes) should line up with one of the six sets of numbered holes on the spacer base.
- Choose a set of holes that allow the front edge of the toilet base to come up as close as possible to the end of the spacer base without overhanging, while completely covering up the spacer base top surface holes. The back of the Toilevator® does not need to be touching the wall.
- Record tile number of the correct spacer base holes and whether the A end or the B end is closest to the wall. (Example: 3A - toward the wall)

## STEP 4



### STEP 4: Install the Spacer Base and Soil Pipe Extension

- Remove the old closet bolts by sliding them out of the slots of the floor flange.
- Replace with the new longer closet bolts that were supplied with the kit, in the closet flange bolt receptacles.
- Place the spacer base on the floor, over the closet flange, with the closet bolts through the correct spacer base holes (recorded tile number) and with the spacer base in the correct orientation.
- Unwrap one wax seal (supplied with the kit) and place over the bottom end of the soil pipe extension. The black plastic portion of the wax seal that protrudes should always face down into the soil pipe.
- Place the soil pipe extension with the wax seal into position in the closet flange by placing the soil pipe extension over the closet bolts. The word "UP" on the soil pipe extension should face up. Push down until the wax seal is seated firmly in the closet flange and the soil pipe extension is resting on top of the spacer base.
- Place one of the round metal washers supplied with the kit over each closet bolt and screw on one hexagon nut over each closet bolt. Tighten the hexagon nut down to hold the spacer in position. Do not over tighten. Check alignment.

# TOILEVATOR™ & TOILEVATOR™ GRANDE

## STEP 5



### STEP 5: Re-install the Toilet onto the Spacer Base

- A. Take the other wax seal supplied with the kit, and put onto the underside of the toilet. Push the wax seal around the soil pipe opening until it rests on the porcelain.
- B. Lower the toilet onto the spacer base with the closet bolts coming through the bolt holes. It is easiest to lift the toilet onto the spacer base with two people. Push the toilet down firmly to set the wax seal into place. You can sit on the toilet carefully, and use your weight to set the wax seals into place. Make sure that the toilet and spacer are reasonably perpendicular to the wall. Adjust the rotation as necessary.
- C. Place a plastic washer, supplied with the kit, over each closet bolt.
- D. Place the other flat metal washers, supplied with the kit, over the closet bolts and on top of the plastic washers. Fasten the second set of hexagon nuts over the closet bolts until tight. bolts and on top of the plastic washers. Fasten the second set of hexagon nuts over the closet bolts until tight.

**NOTE:** Be careful not to overtighten the fasteners since overtightening may cause the porcelain of the toilet to break.

- E. Install the trim caps supplied with the kit over the hexagon nut assembly and snap into place over the plastic washer.
- F. Re-assemble the toilet tank to the back of the toilet, if you took it off.

### STEP 6: Reconnect the Water Supply to the Toilet Tank

- A. If your original cold water line is still long enough to reach your toilet tank, you may reuse it. Otherwise, use the extended flexible water hose supplied with the kit. If you cannot reuse your previous water inlet connection or the supplied water hose, check your local hardware store for the correct water line fixture.

**NOTE:** The supplied extended flexible water hose is for use on compression outlet valves only. Do not use the supplied water line on iron pipe stub outs, slip joint valves or flare outlet valves. The supplied extended flexible water hose is intended for normal household water pressure up to 100 psi. If your system uses more than 100 psi., attach a higher pressure hose.

- B. Turn the water inlet valve to the open position, counter clockwise. With the water valve open, the toilet tank should fill with water and the toilet should be ready to flush. Try flushing once or twice before use.

**NOTE:** If the water hose connections are leaking, tighten the connections with a wrench until it stops.

- C. Replace the toilet tank lid.

- D. It is highly recommended that, a bead of silicone sealant be applied between the spacer base and the toilet as well as between the spacer base and the floor. This will prevent the spacer base and the toilet from moving as the toilet is used.