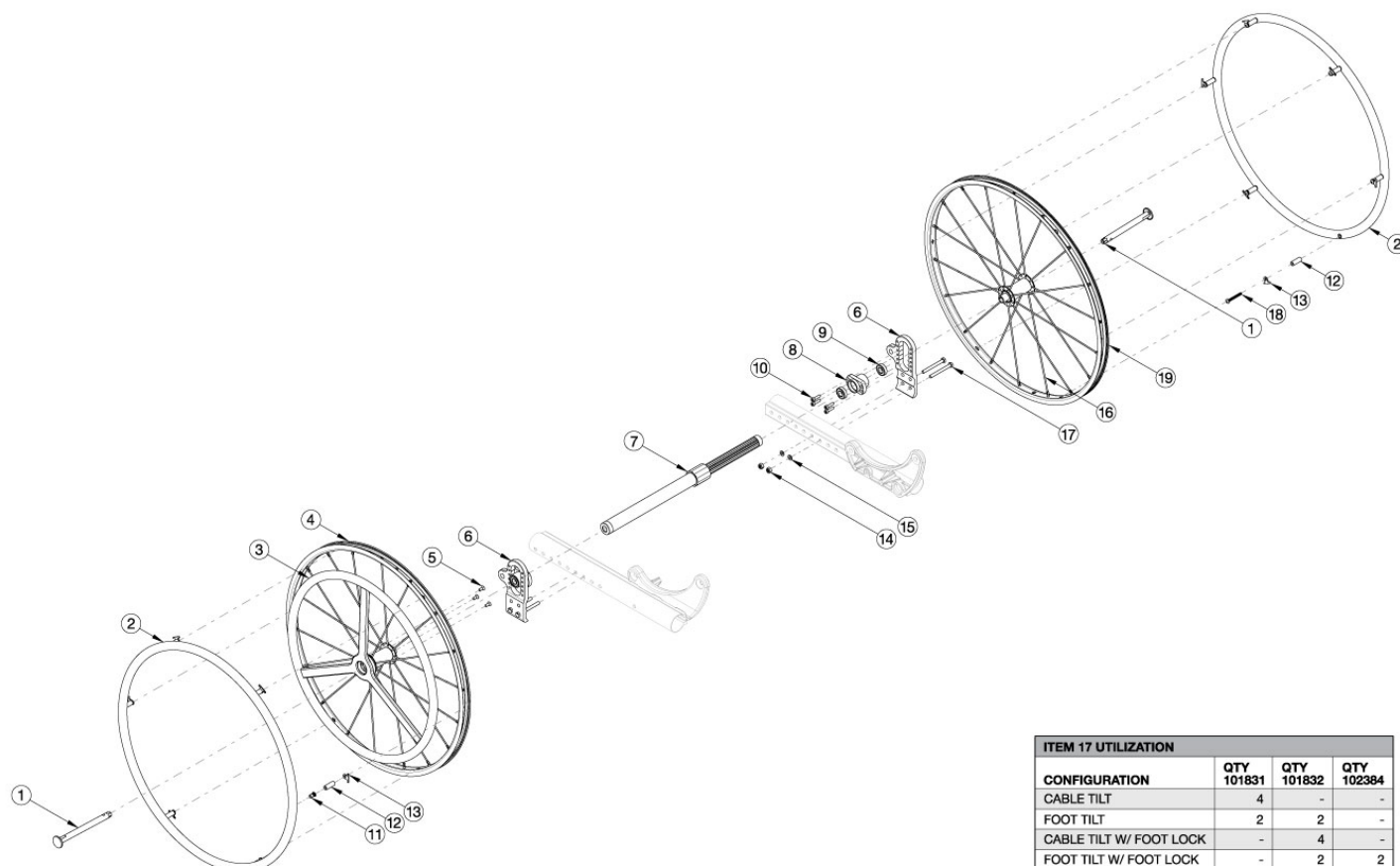


Focus CR One Arm Drive Quick Release - Aluminum Drive Handrim



Effective 5/13/2022, all One Arm Drives will be shipped with a close mounted handrim on the non-drive wheel. Not available with Attendant Foot Lock. If changing wheel size and the Attendant Foot Lock is present, a new linkage may be required; reference the corresponding Focus CR Attendant Foot Lock page. Tires need to be quoted separately.

Item Number	Part Number	Description	Quantity
1, 2a, 3a, 4, 5, 6a, 6b, 7a, 8-15, 17a, 17b, 17c, 19	112654	Focus Quick Release One Arm Drive Retrofit Kit, 24" Spoke with Aluminum Drive Handrim, Aluminum Non Drive Handrim, 14" Wide	1
1, 2a, 3a, 4, 5, 6a, 6b, 7a, 8-15, 17a, 17b, 17c, 19	112655	Focus Quick Release One Arm Drive Retrofit Kit, 24" Spoke with Aluminum Drive Handrim, Aluminum Non Drive Handrim, 15" Wide	1
1, 2a, 3a, 4, 5, 6a, 6b, 7a, 8-15, 17a, 17b, 17c, 19	112656	Focus Quick Release One Arm Drive Retrofit Kit, 24" Spoke with Aluminum Drive Handrim, Aluminum Non Drive Handrim, 16" Wide	1
1, 2a, 3a, 4, 5, 6a, 6b, 7b, 8-15, 17a, 17b, 17c, 19	112657	Focus Quick Release One Arm Drive Retrofit Kit, 24" Spoke with Aluminum Drive Handrim, Aluminum Non Drive Handrim, 17" Wide	1

Item Number	Part Number	Description	Quantity
1, 2a, 3a, 4, 5, 6a, 6b, 7b, 8-15, 17a, 17b, 17c, 19	112658	Focus Quick Release One Arm Drive Retrofit Kit, 24" Spoke with Aluminum Drive Handrim, Aluminum Non Drive Handrim, 18" Wide	1
1, 2a, 3a, 4, 5, 6a, 6b, 7b, 8-15, 17a, 17b, 17c, 19	112659	Focus Quick Release One Arm Drive Retrofit Kit, 24" Spoke with Aluminum Drive Handrim, Aluminum Non Drive Handrim, 19" Wide	1
1, 2a, 3a, 4, 5, 6a, 6b, 7c, 8-15, 17a, 17b, 17c, 19	112660	Focus Quick Release One Arm Drive Retrofit Kit, 24" Spoke with Aluminum Drive Handrim, Aluminum Non Drive Handrim, 20" Wide	1
1, 2a, 3a, 4, 5, 6a, 6b, 7c, 8-15, 17a, 17b, 17c, 19	112661	Focus Quick Release One Arm Drive Retrofit Kit, 24" Spoke with Aluminum Drive Handrim, Aluminum Non Drive Handrim, 21" Wide	1
1, 2a, 3a, 4, 5, 6a, 6b, 7d, 8-15, 17a, 17b, 17c, 19	112662	Focus Quick Release One Arm Drive Retrofit Kit, 24" Spoke with Aluminum Drive Handrim, Aluminum Non Drive Handrim, 22" Wide	1
1, 2a, 3a, 4, 5, 6a, 6b, 7d, 8-15, 17a, 17b, 17c, 19	114282	Focus Quick Release One Arm Drive Retrofit Kit, 24" Spoke with Aluminum Drive Handrim, Aluminum Non Drive Handrim, 23" Wide	1
1, 2a, 3a, 4, 5, 6a, 6b, 7d, 8-15, 17a, 17b, 17c, 19	114283	Focus Quick Release One Arm Drive Retrofit Kit, 24" Spoke with Aluminum Drive Handrim, Aluminum Non Drive Handrim, 24" Wide	1
1, 2b, 3a, 4, 5, 6a, 6b, 7a, 8-15, 17a, 17b, 17c, 19	121806	Focus Quick Release One Arm Drive Retrofit Kit, 24" Spoke with Aluminum Drive Handrim, Plastic Coated Non Drive Handrim, 14" Wide	1
1, 2b, 3a, 4, 5, 6a, 6b, 7a, 8-15, 17a, 17b, 17c, 19	121807	Focus Quick Release One Arm Drive Retrofit Kit, 24" Spoke with Aluminum Drive Handrim, Plastic Coated Non Drive Handrim, 15" Wide	1
1, 2b, 3a, 4, 5, 6a, 6b, 7a, 8-15, 17a, 17b, 17c, 19	121808	Focus Quick Release One Arm Drive Retrofit Kit, 24" Spoke with Aluminum Drive Handrim, Plastic Coated Non Drive Handrim, 16" Wide	1
1, 2b, 3a, 4, 5, 6a, 6b, 7b, 8-15, 17a, 17b, 17c, 19	121809	Focus Quick Release One Arm Drive Retrofit Kit, 24" Spoke with Aluminum Drive Handrim, Plastic Coated Non Drive Handrim, 17" Wide	1
1, 2b, 3a, 4, 5, 6a, 6b, 7b, 8-15, 17a, 17b, 17c, 19	121810	Focus Quick Release One Arm Drive Retrofit Kit, 24" Spoke with Aluminum Drive Handrim, Plastic Coated Non Drive Handrim, 18" Wide	1
1, 2b, 3a, 4, 5, 6a, 6b, 7b, 8-15, 17a, 17b, 17c, 19	121811	Focus Quick Release One Arm Drive Retrofit Kit, 24" Spoke with Aluminum Drive Handrim, Plastic Coated Non Drive Handrim, 19" Wide	1
1, 2b, 3a, 4, 5, 6a, 6b, 7c, 8-15, 17a, 17b, 17c, 19	121812	Focus Quick Release One Arm Drive Retrofit Kit, 24" Spoke with Aluminum Drive Handrim, Plastic Coated Non Drive Handrim, 20" Wide	1

Item Number	Part Number	Description	Quantity
1, 2b, 3a, 4, 5, 6a, 6b, 7c, 8-15, 17a, 17b, 17c, 19	121813	Focus Quick Release One Arm Drive Retrofit Kit, 24" Spoke with Aluminum Drive Handrim, Plastic Coated Non Drive Handrim, 21" Wide	1
1, 2b, 3a, 4, 5, 6a, 6b, 7d, 8-15, 17a, 17b, 17c, 19	121814	Focus Quick Release One Arm Drive Retrofit Kit, 24" Spoke with Aluminum Drive Handrim, Plastic Coated Non Drive Handrim, 22" Wide	1
1, 2b, 3a, 4, 5, 6a, 6b, 7d, 8-15, 17a, 17b, 17c, 19	121815	Focus Quick Release One Arm Drive Retrofit Kit, 24" Spoke with Aluminum Drive Handrim, Plastic Coated Non Drive Handrim, 23" Wide	1
1, 2b, 3a, 4, 5, 6a, 6b, 7d, 8-15, 17a, 17b, 17c, 19	121816	Focus Quick Release One Arm Drive Retrofit Kit, 24" Spoke with Aluminum Drive Handrim, Plastic Coated Non Drive Handrim, 24" Wide	1
14, 15, 17a, 17b, 17c	112902	Focus Quick Release One Arm Drive Axle Plate Attaching Hardware Kit <i>Includes all fasteners required to attach Quick Release One Arm Drive axle plate regardless of chair configuration</i>	1
1, 19	111512	Quick Release One Arm Drive, 24" Spoke Wheel with Axle (Driven Side)	1
1, 3a, 4, 5	112901	Quick Release One Arm Drive Drive, 24" Spoke Wheel with Axle and Aluminum Drive Handrim	1
2a	200349	Handrim Hard Anodized 6 Rivet Nut 24" <i>Does not include mounting hardware</i>	1
2b	112821	Handrim Plastic Coated 6 Rivet Nut 24" <i>Does not include mounting hardware</i>	1
2a, 12, 13, 18	116449	Aluminum Anodized Handrim 6 Rivet Nut 24" with Close Mount Hardware, Non-Drive Side	1
2b, 12, 13, 18	121852	Plastic Coated Handrim 6 Rivet Nut 24" with Close Mount Hardware, Non-Drive Side	1
3a	111520	Quick Release One Arm Drive, Aluminum Drive Side Handrim for 24" Wheel <i>Does not include mounting hardware</i>	1
3b	118248	Quick Release One Arm Drive, Aluminum Drive Side Handrim for 24" Wheel with Micro Grip <i>Does not include mounting hardware</i>	1
4	111486	Quick Release One Arm Drive Drive, 24" Spoke Wheel with Axle (Drive Side)	1
5	103522	M5 x 0.8 x 12 FHCS CLS 10.9 Nyl Blk Zn DIN7991	3
6a, 6b, 8-10	112903	One Arm Drive Focus Axle Plate Assembly PAIR	1
7a	111505	One Arm Drive - Quick Release Zero Camber Drive Shaft 260-370mm <i>Used on 14", 15" and 16" wide</i>	1
7b	111506	One Arm Drive - Quick Release Zero Camber Drive Shaft 330-440mm <i>Used on 17", 18" and 19" wide</i>	1
7c	111507	One Arm Drive - Quick Release Zero Camber Drive Shaft 421-491mm <i>Used on 20" and 21" wide</i>	1

Item Number	Part Number	Description	Quantity
7d	111860	One Arm Drive - Quick Release Zero Camber/Camber Drive Shaft 485-595mm <i>Used on 22", 23" and 24" wide</i>	1
10	101843	M5 x 20 SHCS Blk Zn	4
11	122063	PHMS, M5x0.8x40, CLS4.8, PHL, BLZ, NYL, DIN7985, Custom	6
12	100653	Handrim Spacer Spoke	6
13	100698	Handrim Tab	6
11, 12, 13	502168	Handrim Hardware Kit, 6 Rivet Nut, EACH	1
14	100659	M8 Nylock Nut Blk Zn	4
15	101858	Washer Flat M8 Blk Zn	4
16	111515	Replacement Spoke, Quick Release One Arm Drive, 24"	1
17a	101831	M8 x 80 HHCS Blk Zn	4
17b	101832	M8 x 90 HHCS Blk Zn	4
17c	102384	M8 x 100 HHCS Blk Zc Part THD	2
18	122065	BHCS, M5x0.8x25, CLS12.9, BLZ, NYL, ISO7380, Custom	1
19	111512	Quick Release One Arm Drive, 24" Spoke Wheel with Axle (Driven Side)	1

DRIVE SHAFT CONFIGURATIONS		
FOCUS SEAT WIDTH	PART NUMBER	DESCRIPTION
SEAT WIDTH 14"	111505	QUICK RELEASE OAD ZERO CAMBER DRIVE SHAFT 260-370MM
SEAT WIDTH 15"	111505	QUICK RELEASE OAD ZERO CAMBER DRIVE SHAFT 260-370MM
SEAT WIDTH 16"	111505	QUICK RELEASE OAD ZERO CAMBER DRIVE SHAFT 260-370MM
SEAT WIDTH 17"	111506	QUICK RELEASE OAD ZERO CAMBER DRIVE SHAFT 330-440MM
SEAT WIDTH 18"	111506	QUICK RELEASE OAD ZERO CAMBER DRIVE SHAFT 330-440MM
SEAT WIDTH 19"	111506	QUICK RELEASE OAD ZERO CAMBER DRIVE SHAFT 330-440MM
SEAT WIDTH 20"	111507	QUICK RELEASE OAD ZERO CAMBER DRIVE SHAFT 421-491MM
SEAT WIDTH 21"	111507	QUICK RELEASE OAD ZERO CAMBER DRIVE SHAFT 421-491MM
SEAT WIDTH 22"	#111860	QUICK RELEASE OAD CAMBER DRIVE SHAFT 485-595MM
SEAT WIDTH 23"	111860	QUICK RELEASE OAD CAMBER DRIVE SHAFT 485-595MM
SEAT WIDTH 24"	111860	QUICK RELEASE OAD CAMBER DRIVE SHAFT 485-595MM

#FOR THIS CONFIGURATION, ONE WHEEL MUST BE REMOVED BEFORE THE DRIVE SHAFT CAN BE INSTALLED.
 THE SECOND WHEEL CAN BE INSTALLED ONCE THE DRIVE SHAFT IS IN POSITION.