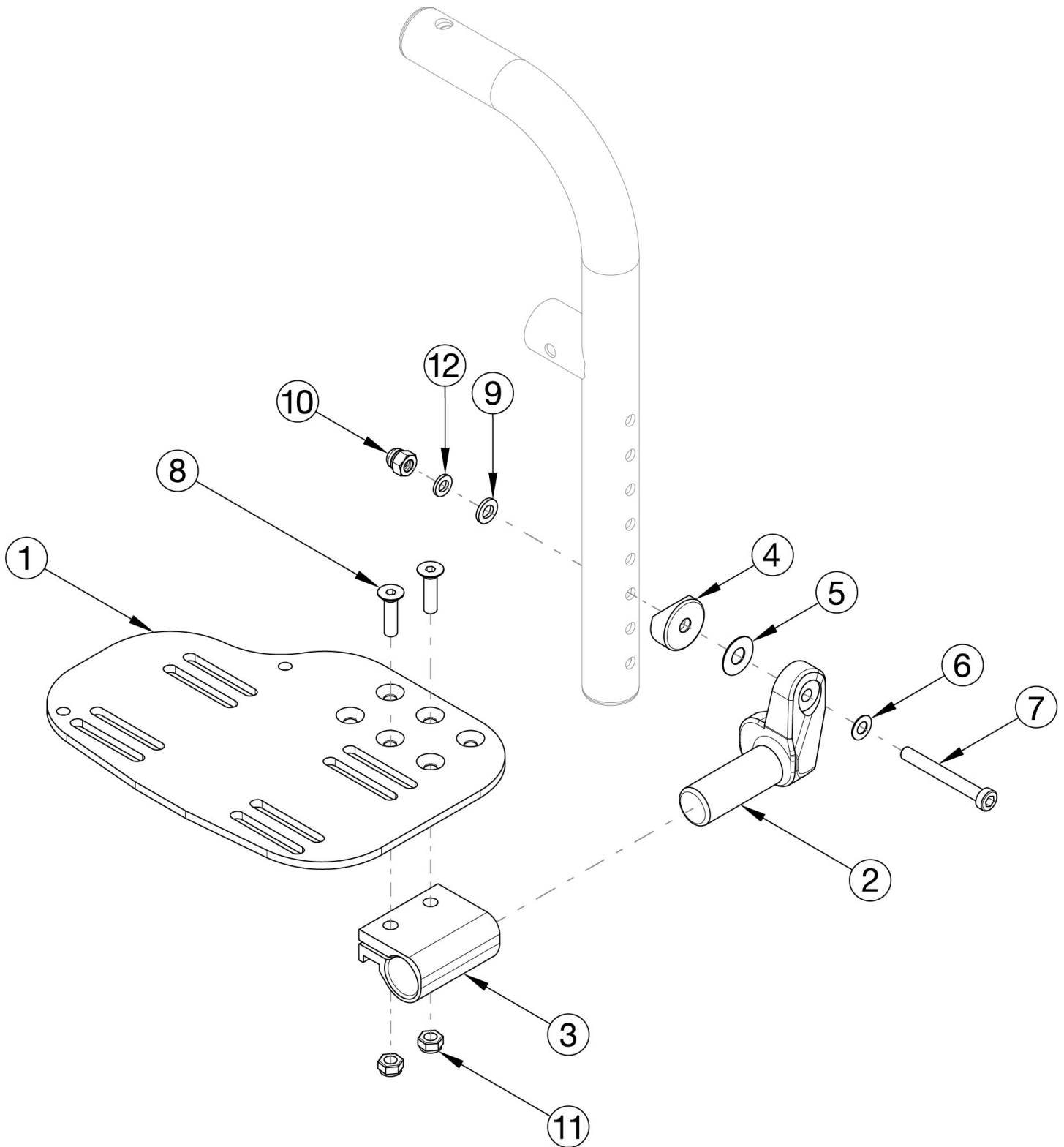


# CR45 Footplates - Angle Adjustable Front Mount



Sizes for footplates/assemblies are based on seat width.

Item Number	Part Number	Description	Quantity
2b, 3-12	502214	Footplate Hardware Kit Angle Adjustable for Front Mount Hanger Left	1
2a, 3-12	502215	Footplate Hardware Kit Angle Adjustable for Front Mount Hanger Right	1
2a, 2b, 3-12	502216	Footplate Hardware Kit Angle Adjustable for Front Mount Hanger Pair	1
1a, 2b, 3-12	501055	Footplate Angle Adjustable Front Mount Assembly 14-15 Wide Left	1
1b, 2a, 3-12	501056	Footplate Angle Adjustable Front Mount Assembly 14-15 Wide Right	1
1a, 1b, 2a, 2b, 3-12	501057	Footplate Angle Adjustable Front Mount Assembly 14-15 Wide Pair	1
1c, 2b, 3-12	501058	Footplate Angle Adjustable Front Mount Assembly 16-17 Wide Left	1
1d, 2a, 3-12	501059	Footplate Angle Adjustable Front Mount Assembly 16-17 Wide Right	1
1c, 1d, 2a, 2b, 3-12	501060	Footplate Angle Adjustable Front Mount Assembly 16-17 Wide Pair	1
1e, 2b, 3-12	501061	Footplate Angle Adjustable Front Mount Assembly 18-24 Wide Left	1
1f, 2a, 3-12	501062	Footplate Angle Adjustable Front Mount Assembly 18-24 Wide Right	1
1e, 1f, 2a, 2b, 3-12	501063	Footplate Angle Adjustable Front Mount Assembly 18-24 Wide Pair	1
1a, 2b, 3-12	502205	Footplate Kit Angle Adjustable w/ Heel Loop for Front Mount Hanger 14-15 Wide Left <i>Heel Loop with attaching hardware is included but not pictured</i>	1
1b, 2a, 3-12	502206	Footplate Kit Angle Adjustable w/ Heel Loop for Front Mount Hanger 14-15 Wide Right <i>Heel Loop with attaching hardware is included but not pictured</i>	1
1a, 1b, 2a, 2b, 3-12	502207	Footplate Kit Angle Adjustable w/ Heel Loop for Front Mount Hanger 14-15 Wide Pair <i>Heel Loop with attaching hardware is included but not pictured</i>	1
1c, 2b, 3-12	502208	Footplate Kit Angle Adjustable w/ Heel Loop for Front Mount Hanger 16-17 Wide Left <i>Heel Loop with attaching hardware is included but not pictured</i>	1
1d, 2a, 3-12	502209	Footplate Kit Angle Adjustable w/ Heel Loop for Front Mount Hanger 16-17 Wide Right <i>Heel Loop with attaching hardware is included but not pictured</i>	1
1c, 1d, 2a, 2b, 3-12	502210	Footplate Kit Angle Adjustable w/ Heel Loop for Front Mount Hanger 16-17 Wide Pair <i>Heel Loop with attaching hardware is included but not pictured</i>	1
1e, 2b, 3-12	502211	Footplate Kit Angle Adjustable w/ Heel Loop for Front Mount Hanger 18-24 Wide Left <i>Heel Loop with attaching hardware is included but not pictured</i>	1
1f, 2a, 3-12	502212	Footplate Kit Angle Adjustable w/ Heel Loop for Front Mount Hanger 18-24 Wide Right <i>Heel Loop with attaching hardware is included but not pictured</i>	1

Item Number	Part Number	Description	Quantity
1e, 1f, 2a, 2b, 3-12	502213	Footplate Kit Angle Adjustable w/ Heel Loop for Front Mount Hanger 18-24 Wide Pair <i>Heel Loop with attaching hardware is included but not pictured</i>	1
1a	000105	Footplate Angle Adjustable 14-15" Wide CAT/TILT Left (Std ELR Right)	1
1b	000106	Footplate Angle Adjustable 14-15" Wide CAT/TILT Right (Std ELR Left)	1
1c	000107	Footplate Angle Adjustable 16-17" Wide CAT/TILT Left (Std ELR Right)	1
1d	000108	Footplate Angle Adjustable 16-17" Wide CAT/TILT Right (Std ELR Left)	1
1e	000109	Footplate Angle Adjustable 18-24" Wide CAT/TILT Left (Std ELR Right)	1
1f	000110	Footplate Angle Adjustable 18-24" Wide CAT/TILT Right (Std ELR Left)	1
2a	000048	Footplate Angle Adj Casting 1" Right	1
2b	000050	Footplate Angle Adj Casting 1" Left	1
3.0	100502	Angle Adj Footplate Clamp 2"	1
4.0	000055	Saddle 1"	1
5.0	000428	Wear Washer	1
6.0	101455	M6 Belleville Washer (.252 x .551 x .050)	1
7.0	101124	M6 x 50 Low SHCS BLK ZC	1
8.0	100662	M6 x 25 FSHCS BLK ZC	2
9.0	100746	M6 Flat Washer Blk Zn	1
10.0	100558	M6 Nyl Ins Domed Cap L/N Zc	1
11.0	100658	M6 Nylock Nut Blk Zn	2
12.0	102072	Washer Nylon .234 ID x .406 OD x .062 Thick	1