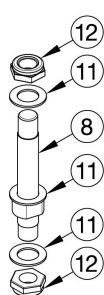
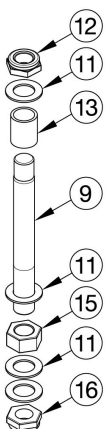


Catalyst E Caster Forks and Stems

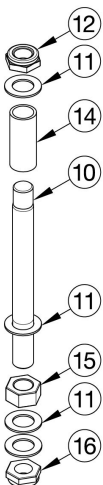
Std



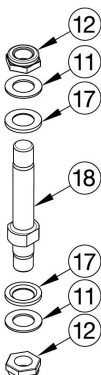
+3/4"



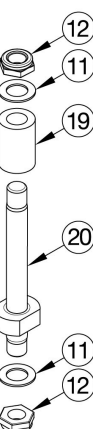
+1 1/2"



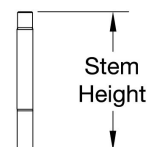
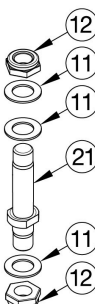
HD Std



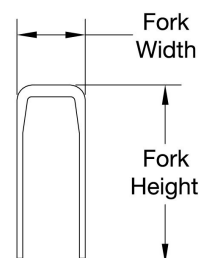
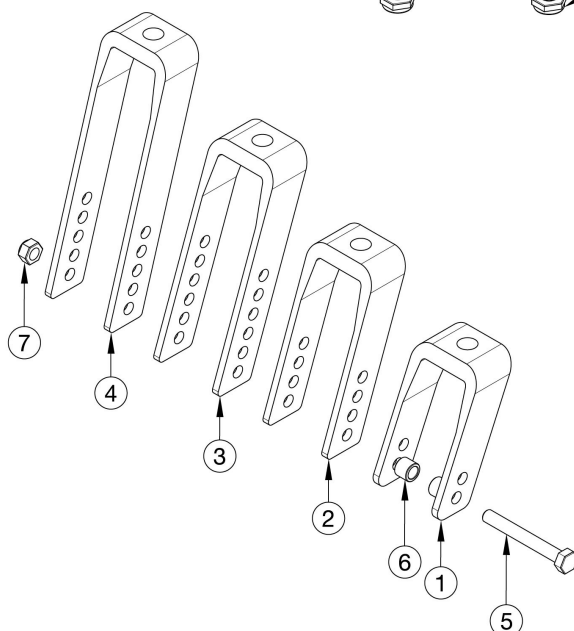
HD Tall



Super Low



Std	3.5"
+ 3/4"	4.4"
+ 1 1/2"	5.1"
HD Std	4.4"
HD Tall	4.8"
Super Low	2.8"



Fork	Height	Width
4" Std	3.6"	2.2"
5" Std	4.6"	2.2"
6" Std	5.6"	2.2"
6" Wide	5.8"	2.9"
7" Std	6.9"	2.2"
7" Wide	7.0"	2.9"

Reference order form for detailed front seat height matrix.

Item Number	Part Number	Description	Quantity
8, 11, 12	500866	Std Caster Stem Assembly CAT	1
9, 11, 12, 13, 15, 16	500001	+3/4 Caster Stem Assembly CAT	1
10, 11, 12, 14, 15, 16	500002	+1 1/2 Caster Stem Assembly CAT	1

Item Number	Part Number	Description	Quantity
11, 12, 17, 18	115805	HD Std Caster Stem Assembly	1
11, 12, 19, 20	115806	HD Tall Caster Stem Assembly	1
11, 12, 21	115825	Super Low Caster Stem Assembly	1
1a, 8, 11, 12	500509	Fork Assembly, Black, 4" Std Stem CAT	1
1a, 9, 11, 12, 13, 15, 16	500510	Fork Assembly, Black, 4" +3/4" Stem CAT	1
1a, 10, 11, 12, 14, 15, 16	500004	Fork Assembly, Black, 4" +1 1/2" Stem CAT	1
1a, 11, 12, 17, 18	115807	Fork Assembly, Black, 4" HD Std Stem	1
1a, 11, 12, 19, 20	115808	Fork Assembly, Black, 4" HD Tall Stem	1
1a, 11, 12, 21	115826	Fork Assembly, Black, 4" Super Low Stem	1
2a, 8, 11, 12	500511	Fork Assembly, Black, 5" Std Stem CAT	1
2a, 9, 11, 12, 13, 15, 16	500005	Fork Assembly, Black, 5" +3/4 Stem CAT	1
2a, 10, 11, 12, 14, 15, 16	500512	Fork Assembly, Black, 5" +1 1/2" Stem CAT	1
2a, 11, 12, 17, 18	115809	Fork Assembly, Black, 5" HD Std Stem	1
2a, 11, 12, 19, 20	115810	Fork Assembly, Black, 5" HD Tall Stem	1
2a, 11, 12, 21	115827	Fork Assembly, Black, 5" Super Low Stem	1
3a, 8, 11, 12	500006	Fork Assembly, Black, 6" Std Stem CAT	1
3a, 9, 11, 12, 13, 15, 16	500513	Fork Assembly, Black, 6" +3/4" Stem CAT	1
3a, 10, 11, 12, 14, 15, 16	500514	Fork Assembly, Black, 6" +1 1/2" Stem CAT	1
3a, 11, 12, 17, 18	115811	Fork Assembly, Black, 6" HD Std Stem	1
3a, 11, 12, 19, 20	115812	Fork Assembly, Black, 6" HD Tall Stem	1
3a, 11, 12, 21	115828	Fork Assembly, Black, 6" Super Low Stem	1
4a, 8, 11, 12	500007	Fork Assembly, Black, 7" Std Stem CAT	1
4a, 9, 11, 12, 13, 15, 16	500515	Fork Assembly, Black, 7" +3/4" Stem CAT	1
4a, 10, 11, 12, 14, 15, 16	500516	Fork Assembly, Black, 7" +1 1/2" Stem CAT	1
4a, 11, 12, 17, 18	115815	Fork Assembly, Black, 7" HD Std Stem	1
4a, 11, 12, 19, 20	115816	Fork Assembly, Black, 7" HD Tall Stem	1
4a, 11, 12, 21	115829	Fork Assembly, Black, 7" Super Low Stem	1

Item Number	Part Number	Description	Quantity
3b, 8, 11, 12	501263	Fork Assembly 6" Wide Std Stem CAT <i>Only used with 2" wide casters</i>	1
3b, 9, 11, 12, 13, 15, 16	501416	Fork Assembly 6" Wide +3/4" Stem CAT <i>Only used with 2" wide casters</i>	1
3b, 10, 11, 12, 14, 15, 16	501417	Fork Assembly 6" Wide +1 1/2" Stem CAT <i>Only used with 2" wide casters</i>	1
3b, 11, 12, 17, 18	115813	Fork Assembly, Black, 6" Wide HD Std Stem <i>Only used with 2" wide casters</i>	1
3b, 11, 12, 19, 20	115814	Fork Assembly, Black, 6" Wide HD Tall Stem <i>Only used with 2" wide casters</i>	1
4b, 8, 11, 12	501264	Fork Assembly 7" Wide Std Stem CAT <i>Only used with 2" wide casters</i>	1
4b, 9, 11, 12, 13, 15, 16	501418	Fork Assembly 7" Wide +3/4" Stem CAT <i>Only used with 2" wide casters</i>	1
4b, 10, 11, 12, 14, 15, 16	501419	Fork Assembly 7" Wide +1 1/2" Stem CAT <i>Only used with 2" wide casters</i>	1
4b, 11, 12, 17, 18	115817	Fork Assembly, Black, 7" Wide HD Std Stem	1
4b, 11, 12, 19, 20	115818	Fork Assembly, Black, 7" Wide HD Tall Stem	1
1a, 12, 16	503805	Caster Fork, Black, 4" Catalyst	1
2a, 12, 16	503806	Caster Fork, Black, 5" Catalyst	1
3a, 12, 16	503807	Caster Fork, Black, 6" Catalyst	1
3b, 12, 16	503808	Caster Fork 6" Wide Catalyst <i>Only used with 2" wide casters</i>	1
4a, 12, 16	503809	Caster Fork, Black, 7" Catalyst	1
4b, 12, 16	503810	Caster Fork 7" Wide Catalyst <i>Only used with 2" wide casters</i>	1
5a, 6a, 7	502653	Caster Attachment Hardware Kit CAT/FCS	1
5b, 6b, 7	502654	Caster Attachment Hardware Kit for 6" and 7" Wide Fork, CAT/FCS	1
5a	101829	M8 x 65 HHCS Blk Zn	1
5b	101831	M8 x 80 HHCS Blk Zn <i>Only used with 2" wide casters</i>	1
6a	100792	Caster Spacer D8 x D12 x 10mm / Close Mount Handrim Spacer <i>Used with all casters except 6x2 and 8x2</i>	2

Item Number	Part Number	Description	Quantity
6b	001246	Caster Spacer Black 6 x 2 Poly .472ODX.319IDX.370LG <i>Only used with 6" x 2" casters</i>	2
7	100659	M8 Nylock Nut Blk Zn	1
8, 12	503813	Fork Stem Standard Catalyst	1
9, 16	503812	Fork Stem 3/4" Catalyst	1
10, 16	503811	Fork Stem 1 1/2" Catalyst	1
11	100682	Washer 1/2" .518 x .875 x .047 F/W Black Zinc <i>Use quantity 3 with standard stem</i>	4
12	100529	M12 x 1.25mm Lock Nut Black <i>Use quantity 1 with 3/4" and 1 1/2" stems</i>	2
13	000115	Fork Stem Spacer 3/4"	1
14	000114	Fork Stem Spacer 1 1/2" CAT	1
15	101869	1/2-20 G5 Hex Nut Hxfree Zc	1
16	101459	1/2-20 NTE JAM NYL INS L/N BLK ZC	1
17	002593	Caster Stem Washer Heavy Duty	1
18	002592	Caster Stem Heavy Duty	1
19	002476	Spacer, 3/4" OD x 1/2" ID x 1.23	1
20	002477	Caster Stem Tall, Adult Tilt / HD Catalyst	1
21	111981	Hemi Caster Housing Stem	1