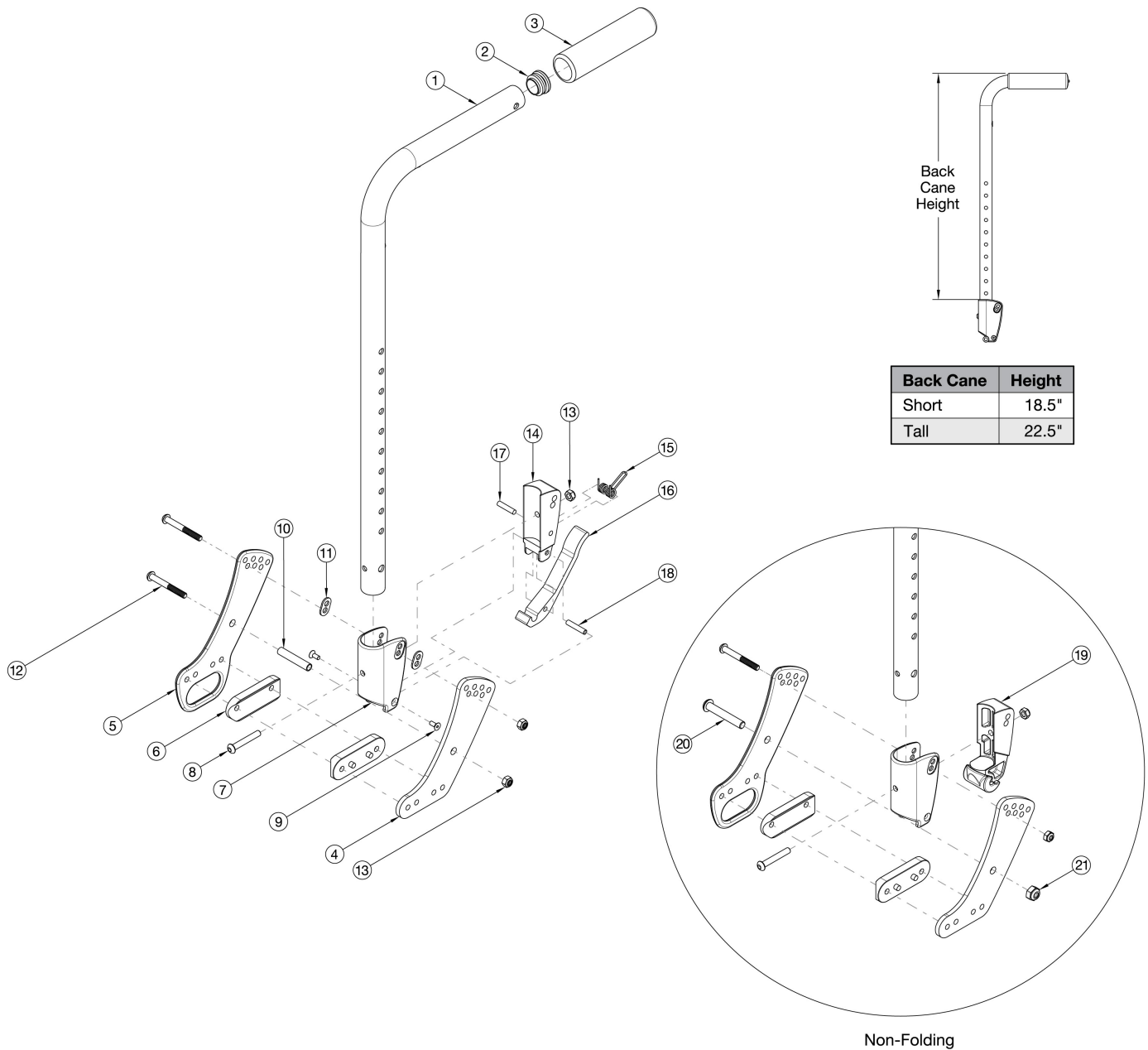


CR45 Stroller Handle Backrest



If changing from another style backrest and the hand tilt is present, a new Hand Tilt Cable / Trigger Kit may be required.

Item Number	Part Number	Description	Quantity
1a, 2, 3, 7 - 9, 11, 13 - 18	506734	Back Cane Assembly w/ Latch Insert, Fixed Stroller, Short	1
1b, 2, 3, 7 - 9, 11, 13 - 18	506735	Back Cane Assembly w/ Latch Insert, Fixed Stroller, Tall	1
1a, 7 - 9, 11, 13 - 18	116514	Back Cane Assembly w/ Latch Insert, Fixed Stroller, Short	1
1b, 7 - 9, 11, 13 - 18	116515	Back Cane Assembly w/ Latch Insert, Fixed Stroller, Tall	1

Item Number	Part Number	Description	Quantity
1a, 2, 3, 7 - 8, 13, 19	506738	Back Cane Assembly w/ Latch Block, Fixed Stroller, Short, Non-Folding	1
1b, 2, 3, 7 - 8, 13, 19	506739	Back Cane Assembly w/ Latch Block, Fixed Stroller, Tall, Non-Folding	1
1a, 3, 7 - 8, 13, 19	116516	Back Cane Assembly w/ Latch Block, Fixed Stroller, Short, Non-Folding	1
1b, 3, 7 - 8, 13, 19	116517	Back Cane Assembly w/ Latch Block, Fixed Stroller, Tall, Non-Folding,	1
4, 6, 10, 12 - 13	116510	Backrest Hardware Assembly, Single Side, Std	1
4 - 6, 10, 12 - 13	116511	Backrest Hardware Assembly, Single Side, Transit	1
4, 6, 12 - 13, 20 - 21	116512	Backrest Hardware Assembly, Single Side, Std Non-Folding	1
4 - 6, 12 - 13, 20 - 21	116513	Backrest Hardware Assembly, Single Side, Transit Non-Folding	1
1a, 2, 3	506811	Stroller Handle Back Post with Grip Assembly, Short	1
1b, 2, 3	506812	Stroller Handle Back Post with Grip Assembly, Tall	1
2	100804	Tube End Plug 1"	1
4	112488	Standard Back Plate, CR45/Flip XPA	1
5	112489	Transit Back Plate, CR45/Flip XPA	1
6	112491	Saddle, Dual, 1" x 2.0SP	1
8	100797	M6 x 40 BHCS BLK ZC	1
9	101818	M4 x 10 FHCS BLKZC w/Patch	1
10	002738	Spacer .313 OD x .243 ID x 1.68 long	1
11	001897	Washer, Dual, PSA	1
12	101781	M6 x 50mm Partial Thread BHCS Blk ZC	1
13	100658	M6 Nylock Nut Blk Zn	2
14	001895	Latch Insert, Folding Backrest	1
15	001896	Spring, Backrest Latch	1
16	001893	Latch Lever, Backrest	1
17	102694	Dowel Pin, M5 X 24, Blk Zn	1
18	002513	Threaded Barrel, 5mm OD x M4	1
19	002035	Insert, Backrest, Non-Folding	1
20	101815	M8 x 50 BHCS Blk Zn	2

Item Number	Part Number	Description	Quantity
21	100659	M8 Nylock Nut Blk Zn	2