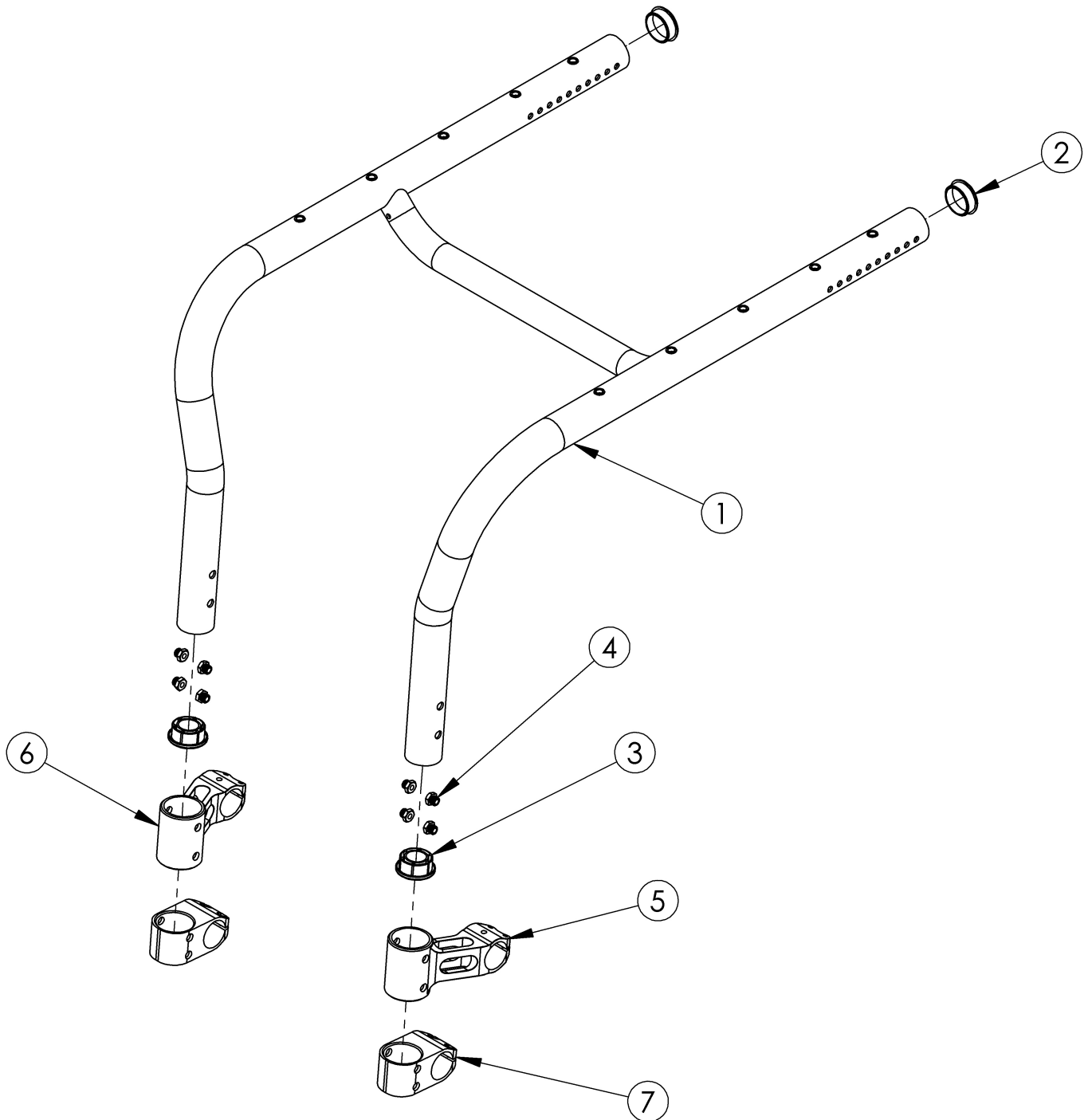


Rogue ALX Rigid Frame (Formerly Tsunami)



Replacement rigid frames may be quoted, but must be ordered through Customer Service. Serial number required upon order. Depending on configuration, new caster mounts may be required. If transit is present, new front transit brackets may be required. If quoting a Frame for Australia or New Zealand, 122921 is required when transit is not present.

| Item Number | Part Number | Description | Quantity |
|--------------------|--------------------|--|-----------------|
| 2 | 101113 | Tube End Plug 1 3/8" | 2 |
| 3 | 000490 | Sleeve Footrest Plastic Rigid | 2 |
| 4 | 000491 | Caster T-Nut, RG ALX/LW XP | 8 |
| | 122921 | Not AS/NZS 3696.19 Compliant On-Chair Label with Instruction | 1 |