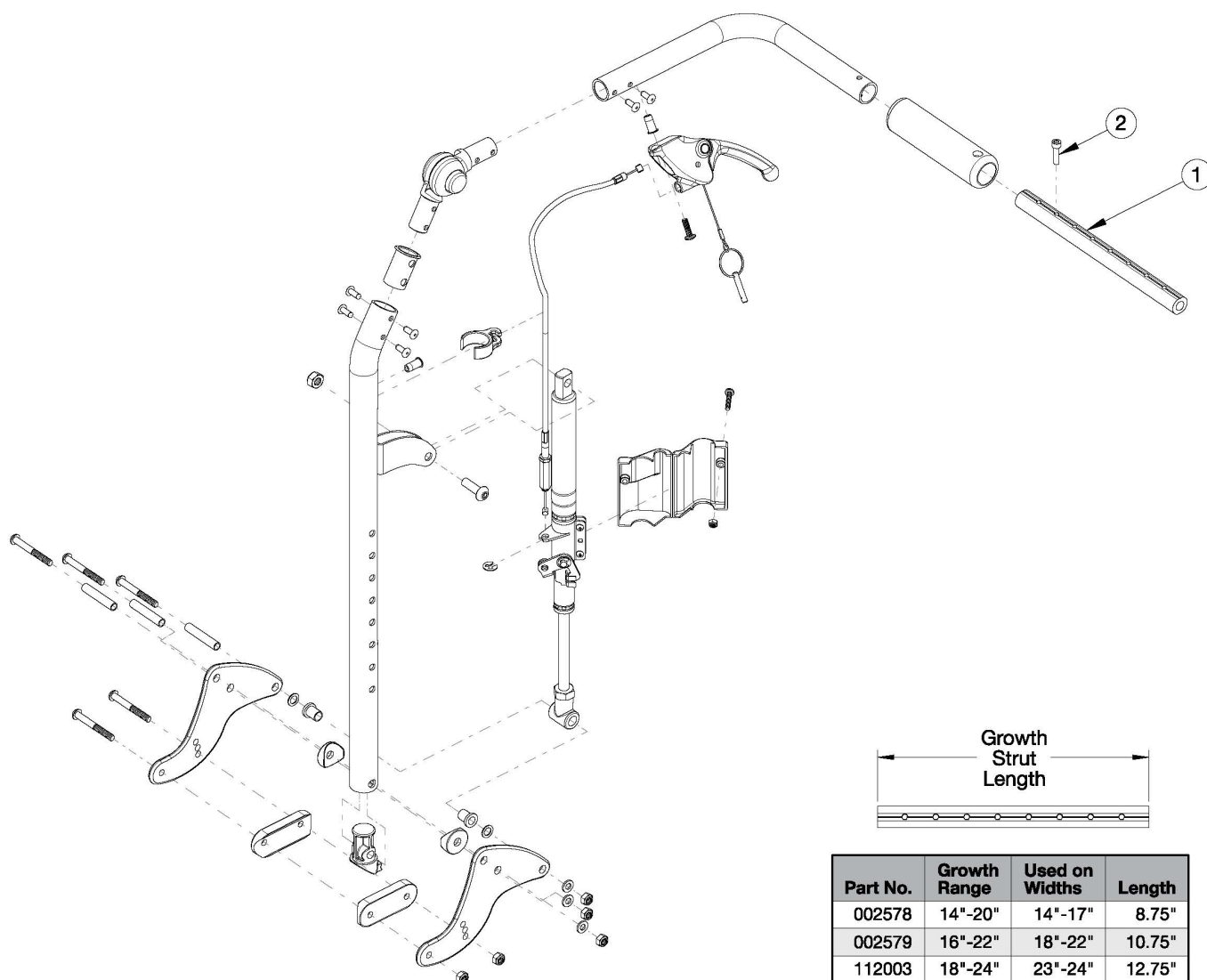


CR45 Reclining Backrest - Growth



Has your width changed? If yes, verify the current growth strut will work or select appropriately below. If chair was invoiced prior to 12/18/23, an upper back tube assembly is required. If chair was invoiced after to 12/18/23, upper back tube assembly parts can now be purchased individually

Item Number	Part Number	Description	Quantity
1a	002578	Growth Strut, Stroller, Short <i>Used on chairs 14"-17" wide</i>	1
1b	002579	Growth Strut, Stroller, Long <i>Used on chairs 18"-22" wide</i>	1
2	101843	M5 x 20 SHCS Blk Zn	1