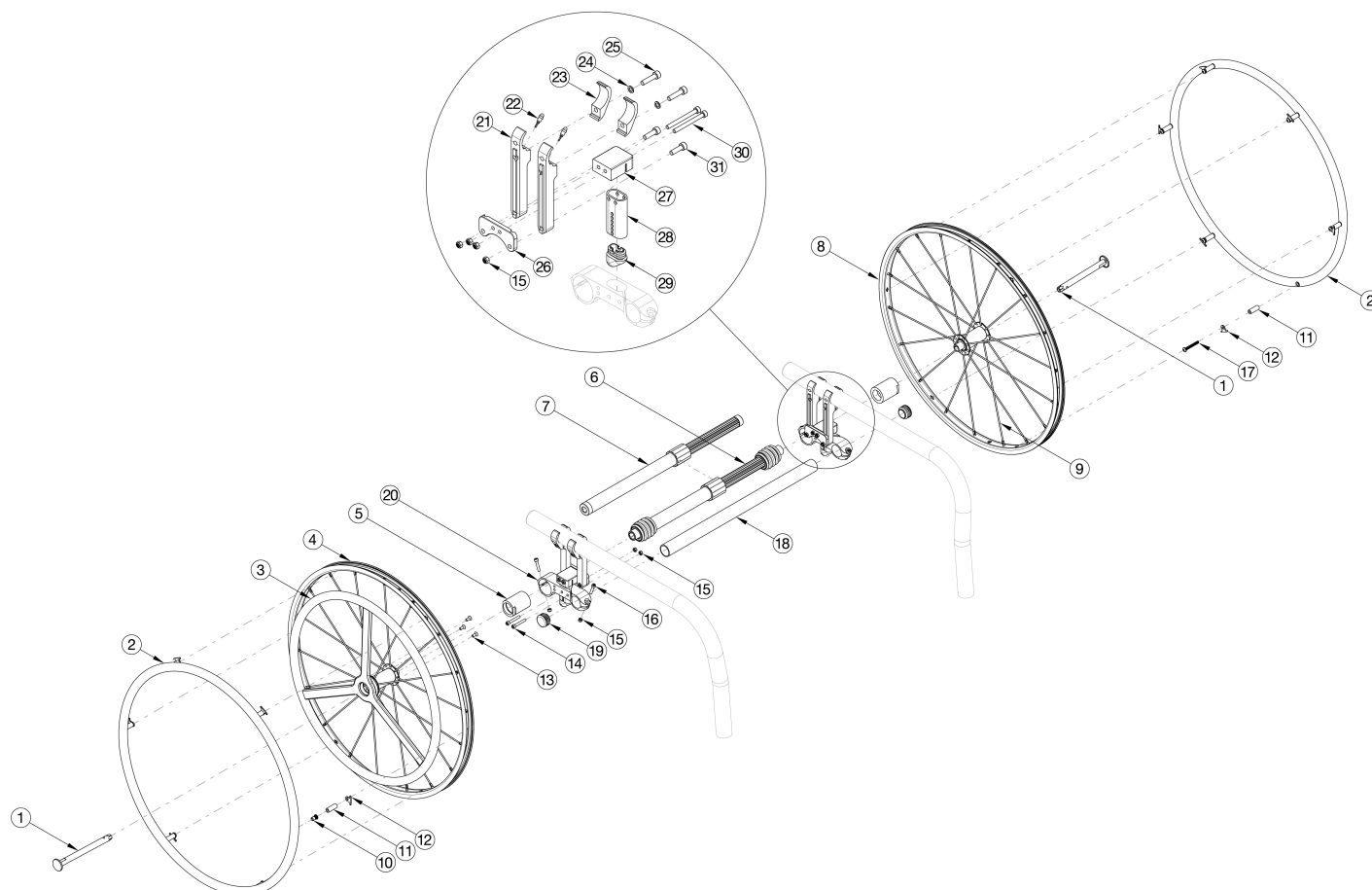


# Rogue2 / Rogue XP 22 One Arm Drive Quick Release Poly Coated Drive Handrim



If retrofitting to add the One Arm Drive, new rear towers and kit 124265 are required in addition to the complete One Arm Drive system and camber tube kit. Effective 5/13/2022, all One Arm Drives will be shipped with a close mounted handrim on the non-drive wheel. Most One Arm Drive kits do not include rear tires. Tires need to be quoted separately. Used on Rogue XP chairs invoiced starting on 3/12/25

Item Number	Part Number	Description	Quantity
1, 2a, 2b, 3, 4, 5a, 7a, 8, 10, 11a, 11b, 12-17	115152	Rogue Quick Release One Arm Drive Retrofit Kit, 0° Camber, 22" Spoke with Poly Coated Drive Handrim, Aluminum Non Drive Handrim, 177-255mm Drive Shaft	1
1, 2a, 2b, 3, 4, 5a, 7b, 8, 10, 11a, 11b, 12-17	115153	Rogue Quick Release One Arm Drive Retrofit Kit, 0° Camber, 22" Spoke with Poly Coated Drive Handrim, Aluminum Non Drive Handrim, 225-295mm Drive Shaft	1
1, 2a, 2b, 3, 4, 5a, 7c, 8, 10, 11a, 11b, 12-17	115154	Rogue Quick Release One Arm Drive Retrofit Kit, 0° Camber, 22" Spoke with Poly Coated Drive Handrim, Aluminum Non Drive Handrim, 260-370mm Drive Shaft	1

Item Number	Part Number	Description	Quantity
1, 2a, 2b, 3, 4, 5a, 7d, 8, 10, 11a, 11b, 12-17	115155	Rogue Quick Release One Arm Drive Retrofit Kit, 0° Camber, 22" Spoke with Poly Coated Drive Handrim, Aluminum Non Drive Handrim, 330-440mm Drive Shaft	1
1, 2a, 2b, 3, 4, 5a, 7e, 8, 10, 11a, 11b, 12-17	115156	Rogue Quick Release One Arm Drive Retrofit Kit, 0° Camber, 22" Spoke with Poly Coated Drive Handrim, Aluminum Non Drive Handrim, 421-491mm Drive Shaft	1
1, 2a, 2b, 3, 4, 5b, 6a, 8, 10, 11a, 11b, 12-17	115157	Rogue Quick Release One Arm Drive Retrofit Kit, 2° Camber, 22" Spoke with Poly Coated Drive Handrim, Aluminum Non Drive Handrim, 170-195mm Drive Shaft	1
1, 2a, 2b, 3, 4, 5b, 6b, 8, 10, 11a, 11b, 12-17	115158	Rogue Quick Release One Arm Drive Retrofit Kit, 2° Camber, 22" Spoke with Poly Coated Drive Handrim, Aluminum Non Drive Handrim, 180-210mm Drive Shaft	1
1, 2a, 2b, 3, 4, 5b, 6c, 8, 10, 11a, 11b, 12-17	115159	Rogue Quick Release One Arm Drive Retrofit Kit, 2° Camber, 22" Spoke with Poly Coated Drive Handrim, Aluminum Non Drive Handrim, 195-235mm Drive Shaft	1
1, 2a, 2b, 3, 4, 5b, 6d, 8, 10, 11a, 11b, 12-17	115160	Rogue Quick Release One Arm Drive Retrofit Kit, 2° Camber, 22" Spoke with Poly Coated Drive Handrim, Aluminum Non Drive Handrim, 220-280mm Drive Shaft	1
1, 2a, 2b, 3, 4, 5b, 6e, 8, 10, 11a, 11b, 12-17	115161	Rogue Quick Release One Arm Drive Retrofit Kit, 2° Camber, 22" Spoke with Poly Coated Drive Handrim, Aluminum Non Drive Handrim, 270-330mm Drive Shaft	1
1, 2a, 2b, 3, 4, 5b, 6f, 8, 10, 11a, 11b, 12-17	115162	Rogue Quick Release One Arm Drive Retrofit Kit, 2° Camber, 22" Spoke with Poly Coated Drive Handrim, Aluminum Non Drive Handrim, 295-370mm Drive Shaft	1
1, 2a, 2b, 3, 4, 5b, 6g, 8, 10, 11a, 11b, 12-17	115163	Rogue Quick Release One Arm Drive Retrofit Kit, 2° Camber, 22" Spoke with Poly Coated Drive Handrim, Aluminum Non Drive Handrim, 350-460mm Drive Shaft	1
1, 2a, 2b, 3, 4, 5b, 6h, 8, 10, 11a, 11b, 12-17	115164	Rogue Quick Release One Arm Drive Retrofit Kit, 2° Camber, 22" Spoke with Poly Coated Drive Handrim, Aluminum Non Drive Handrim, 420-530mm Drive Shaft	1
1, 2a, 2b, 3, 4, 5c, 6c, 8, 10, 11a, 11b, 12-17	115165	Rogue Quick Release One Arm Drive Retrofit Kit, 4° Camber, 22" Spoke with Poly Coated Drive Handrim, Aluminum Non Drive Handrim, 195-235mm Drive Shaft	1
1, 2a, 2b, 3, 4, 5c, 6d, 8, 10, 11a, 11b, 12-17	115166	Rogue Quick Release One Arm Drive Retrofit Kit, 4° Camber, 22" Spoke with Poly Coated Drive Handrim, Aluminum Non Drive Handrim, 220-280mm Drive Shaft	1
1, 2a, 2b, 3, 4, 5c, 6e, 8, 10, 11a, 11b, 12-17	115167	Rogue Quick Release One Arm Drive Retrofit Kit, 4° Camber, 22" Spoke with Poly Coated Drive Handrim, Aluminum Non Drive Handrim, 270-330mm Drive Shaft	1
1, 2a, 2b, 3, 4, 5c, 6f, 8, 10, 11a, 11b, 12-17	115168	Rogue Quick Release One Arm Drive Retrofit Kit, 4° Camber, 22" Spoke with Poly Coated Drive Handrim, Aluminum Non Drive Handrim, 295-370mm Drive Shaft	1

Item Number	Part Number	Description	Quantity
1, 2a, 2b, 3, 4, 5c, 6g, 8, 10, 11a, 11b, 12-17	115169	Rogue Quick Release One Arm Drive Retrofit Kit, 4° Camber, 22" Spoke with Poly Coated Drive Handrim, Aluminum Non Drive Handrim, 350-460mm Drive Shaft	1
1, 2a, 2b, 3, 4, 5a, 7a, 8, 10, 11a, 11b, 12-17	121500	Rogue Quick Release One Arm Drive Retrofit Kit, 0° Camber, 22" Spoke with Poly Coated Drive Handrim, Plastic Coated Non Drive Handrim, 177-255mm Drive Shaft	1
1, 2a, 2b, 3, 4, 5a, 7b, 8, 10, 11a, 11b, 12-17	121501	Rogue Quick Release One Arm Drive Retrofit Kit, 0° Camber, 22" Spoke with Poly Coated Drive Handrim, Plastic Coated Non Drive Handrim, 225-295mm Drive Shaft	1
1, 2a, 2b, 3, 4, 5a, 7c, 8, 10, 11a, 11b, 12-17	121502	Rogue Quick Release One Arm Drive Retrofit Kit, 0° Camber, 22" Spoke with Poly Coated Drive Handrim, Plastic Coated Non Drive Handrim, 260-370mm Drive Shaft	1
1, 2a, 2b, 3, 4, 5a, 7d, 8, 10, 11a, 11b, 12-17	121503	Rogue Quick Release One Arm Drive Retrofit Kit, 0° Camber, 22" Spoke with Poly Coated Drive Handrim, Plastic Coated Non Drive Handrim, 330-440mm Drive Shaft	1
1, 2a, 2b, 3, 4, 5a, 7e, 8, 10, 11a, 11b, 12-17	121504	Rogue Quick Release One Arm Drive Retrofit Kit, 0° Camber, 22" Spoke with Poly Coated Drive Handrim, Plastic Coated Non Drive Handrim, 421-491mm Drive Shaft	1
1, 2a, 2b, 3, 4, 5b, 6a, 8, 10, 11a, 11b, 12-17	121505	Rogue Quick Release One Arm Drive Retrofit Kit, 2° Camber, 22" Spoke with Poly Coated Drive Handrim, Plastic Coated Non Drive Handrim, 170-195mm Drive Shaft	1
1, 2a, 2b, 3, 4, 5b, 6b, 8, 10, 11a, 11b, 12-17	121506	Rogue Quick Release One Arm Drive Retrofit Kit, 2° Camber, 22" Spoke with Poly Coated Drive Handrim, Plastic Coated Non Drive Handrim, 180-210mm Drive Shaft	1
1, 2a, 2b, 3, 4, 5b, 6c, 8, 10, 11a, 11b, 12-17	121507	Rogue Quick Release One Arm Drive Retrofit Kit, 2° Camber, 22" Spoke with Poly Coated Drive Handrim, Plastic Coated Non Drive Handrim, 195-235mm Drive Shaft	1
1, 2a, 2b, 3, 4, 5b, 6d, 8, 10, 11a, 11b, 12-17	121508	Rogue Quick Release One Arm Drive Retrofit Kit, 2° Camber, 22" Spoke with Poly Coated Drive Handrim, Plastic Coated Non Drive Handrim, 220-280mm Drive Shaft	1
1, 2a, 2b, 3, 4, 5b, 6e, 8, 10, 11a, 11b, 12-17	121509	Rogue Quick Release One Arm Drive Retrofit Kit, 2° Camber, 22" Spoke with Poly Coated Drive Handrim, Plastic Coated Non Drive Handrim, 270-330mm Drive Shaft	1
1, 2a, 2b, 3, 4, 5b, 6f, 8, 10, 11a, 11b, 12-17	121510	Rogue Quick Release One Arm Drive Retrofit Kit, 2° Camber, 22" Spoke with Poly Coated Drive Handrim, Plastic Coated Non Drive Handrim, 295-370mm Drive Shaft	1
1, 2a, 2b, 3, 4, 5b, 6g, 8, 10, 11a, 11b, 12-17	121511	Rogue Quick Release One Arm Drive Retrofit Kit, 2° Camber, 22" Spoke with Poly Coated Drive Handrim, Plastic Coated Non Drive Handrim, 350-460mm Drive Shaft	1
1, 2a, 2b, 3, 4, 5b, 6h, 8, 10, 11a, 11b, 12-17	121512	Rogue Quick Release One Arm Drive Retrofit Kit, 2° Camber, 22" Spoke with Poly Coated Drive Handrim, Plastic Coated Non Drive Handrim, 420-530mm Drive Shaft	1

Item Number	Part Number	Description	Quantity
1, 2a, 2b, 3, 4, 5c, 6c, 8, 10, 11a, 11b, 12-17	121513	Rogue Quick Release One Arm Drive Retrofit Kit, 4° Camber, 22" Spoke with Poly Coated Drive Handrim, Plastic Coated Non Drive Handrim, 195-235mm Drive Shaft	1
1, 2a, 2b, 3, 4, 5c, 6d, 8, 10, 11a, 11b, 12-17	121514	Rogue Quick Release One Arm Drive Retrofit Kit, 4° Camber, 22" Spoke with Poly Coated Drive Handrim, Plastic Coated Non Drive Handrim, 220-280mm Drive Shaft	1
1, 2a, 2b, 3, 4, 5c, 6e, 8, 10, 11a, 11b, 12-17	121515	Rogue Quick Release One Arm Drive Retrofit Kit, 4° Camber, 22" Spoke with Poly Coated Drive Handrim, Plastic Coated Non Drive Handrim, 270-330mm Drive Shaft	1
1, 2a, 2b, 3, 4, 5c, 6f, 8, 10, 11a, 11b, 12-17	121516	Rogue Quick Release One Arm Drive Retrofit Kit, 4° Camber, 22" Spoke with Poly Coated Drive Handrim, Plastic Coated Non Drive Handrim, 295-370mm Drive Shaft	1
1, 2a, 2b, 3, 4, 5c, 6g, 8, 10, 11a, 11b, 12-17	121517	Rogue Quick Release One Arm Drive Retrofit Kit, 4° Camber, 22" Spoke with Poly Coated Drive Handrim, Plastic Coated Non Drive Handrim, 350-460mm Drive Shaft	1
1, 2a, 8, 11b, 12	119588	Quick Release One Arm Drive, 22" Spoke Wheel with Axle (Driven Side) and Close Mounted Handrim	1
1, 2b, 8, 11b, 13	115287	Quick Release One Arm Drive, 22" Spoke Wheel with Axle and Poly Coated Drive Handrim	1
2a, 11b, 12, 17	116448	Alumnium Anodized Handrim 6 Rivet Nut 22" with Close Mount Hardware, Non-Drive Side	1
2b, 11b, 12, 17	121851	Plastic Coated Handrim 6 Rivet Nut 22" with Close Mount Hardware, Non-Drive Side	1
15, 23a, 24-31	124265	Camber Tower Clamp Black Anodized w/ Hardware Assembly, One Side Rogue2 / Rogue XP	1
15, 23b, 24-31	124265_ _ _	Color Anodized/Color Accent Camber Tower Clamp w/ Hardware Assembly, One Side Rogue2 / Rogue XP	1
5a, 20	108074	One Arm Drive Rogue/Clik Axle Mount 0 Degree Camber PAIR	1
5b, 20	003209	One Arm Drive Rogue/Clik Axle Mount 2 Degree Camber, PAIR	1
5c, 20	003210	One Arm Drive Rogue/Clik Axle Mount 4 Degree Camber Each	2
2a	100560	Handrim Aluminum Anodized 6 Rivet Nut 22" <i>Does not include mounting hardware</i>	1
2b	112820	Handrim Plastic Coated 6 Rivet Nut 22" <i>Does not include mounting hardware</i>	1
3	112434	Quick Release One Arm Drive, Poly Coated Drive Side Handrim for 22" Wheel <i>Does not include mounting hardware</i>	1
4	111485	Quick Release One Arm Drive Drive, 22" Spoke Wheel with Axle (Drive Side)	0
5a	107031	One Arm Drive Quick Release Camber Plug w/Bearings - 0° Camber	2
5b	003170	One Arm Drive Quick Release Camber Plug w/Bearings - 2° Camber	2

Item Number	Part Number	Description	Quantity
5c	003171	One Arm Drive Quick Release Camber Plug w/Bearings - 4° Camber	2
6a	111858	One Arm Drive - Quick Release Camber Drive Shaft 170-195mm	1
6b	111627	One Arm Drive - Quick Release Camber Drive Shaft 180-210mm	1
6c	111628	One Arm Drive - Quick Release Camber Drive Shaft 195-235mm	1
6d	111498	One Arm Drive - Quick Release Camber Drive Shaft 220-280mm	1
6e	111499	One Arm Drive - Quick Release Camber Drive Shaft 270-330mm	1
6f	111500	One Arm Drive - Quick Release Camber Drive Shaft 295-370mm	1
6g	111501	One Arm Drive - Quick Release Camber Drive Shaft 350-460mm	1
6h	111502	One Arm Drive - Quick Release Camber Drive Shaft 420-530mm	1
7a	111503	One Arm Drive - Quick Release Zero Camber Drive Shaft 177-255mm	1
7b	111504	One Arm Drive - Quick Release Zero Camber Drive Shaft 225-295mm	1
7c	111505	One Arm Drive - Quick Release Zero Camber Drive Shaft 260-370mm	1
7d	111506	One Arm Drive - Quick Release Zero Camber Drive Shaft 330-440mm	1
7e	111507	One Arm Drive - Quick Release Zero Camber Drive Shaft 421-491mm	1
8	111511	Quick Release One Arm Drive, 22" Spoke Wheel with Axle (Driven Side)	1
9	111515	Replacement Spoke, Quick Release One Arm Drive, 24"	1
10	122063	PHMS, M5x0.8x40, CLS4.8, PHL, BLZ, NYL, DIN7985, Custom	6
11a	100653	Handrim Spacer Spoke <i>Used for Standard Mount handrims</i>	6
11b	100792	Caster Spacer D8 x D12 x 10mm / Close Mount Handrim Spacer <i>Used for Close Mount handrims</i>	6
12	100698	Handrim Tab	6
13	103522	M5 x 0.8 x 12 FHCS CLS 10.9 Nyl Blk Zn DIN7991	3
14	101734	M5 x 35 SHCS BLK ZC	2
15	100657	M5 Nylock Nut Blk Zn	4
16	101717	M5 x 25 SHCS BLK ZC	2
17	122065	BHCS, M5x0.8x25, CLS12.9, BLZ, NYL, ISO7380, Custom	1
18a	003369	One Arm Drive Camber Tube 11" Kit, Klik / Rogue XP	1

Item Number	Part Number	Description	Quantity
		<i>Does not include tube end plugs</i>	
18b	003370	One Arm Drive Camber Tube 12" Kit, Klik / Rogue / Rogue XP <i>Does not include tube end plugs</i>	1
18c	003371	One Arm Drive Camber Tube 13" Kit, Klik / Rogue / Rogue XP <i>Does not include tube end plugs</i>	1
18d	003372	One Arm Drive Camber Tube 14" Kit, Klik / Rogue / Rogue XP <i>Does not include tube end plugs</i>	1
18e	003373	One Arm Drive Camber Tube 15" Kit, Klik / Rogue / Rogue XP <i>Does not include tube end plugs</i>	1
18f	003374	One Arm Drive Camber Tube 16" Kit, Klik / Rogue / Rogue XP <i>Does not include tube end plugs</i>	1
18d	003708	One Arm Drive Camber Tube 17" Kit, Klik / Rogue / Rogue XP <i>Does not include tube end plugs</i>	1
18e	003709	One Arm Drive Camber Tube 18" Kit, Klik / Rogue / Rogue XP <i>Does not include tube end plugs</i>	1
18f	116857	One Arm Drive Camber Tube 19" Kit, Rogue <i>Does not include tube end plugs</i>	1
18g	116858	One Arm Drive Camber Tube 20" Kit, Rogue <i>Does not include tube end plugs</i>	1
19	100532	Tube End Plug 1 1/8"	1
20	108074	One Arm Drive Rogue/Klik Axle Mount 0 Degree Camber PAIR <i>Used with positive CG. If negative CG, see Rogue and Little Wave Camber Mount page</i>	4
21a	114004	Rear Tower Inner Index Clamp 2.125", Black, Right	2
21b	114004_ _ _	Rear Tower Inner Index Clamp 2.125", Anodized/Color Accent, Right	2
21c	114005	Rear Tower Inner Index Clamp 2.875", Black, Right	2
21d	114005_ _ _	Rear Tower Inner Index Clamp 2.875", Anodized/Color Accent, Right	2
21e	114006	Rear Tower Inner Index Clamp 3.625, Black, Right	2
21f	114006_ _ _	Rear Tower Inner Index Clamp 3.625, Anodized/Color Accent, Right	2
21g	114007	Rear Tower Inner Index Clamp 4.500", Black, Right	2
21h	114007_ _ _	Rear Tower Inner Index Clamp 4.500", Anodized/Color Accent, Right	2
21i	114008	Rear Tower Inner Index Clamp 5.375", Black, Right	2
21j	114008_ _ _	Rear Tower Inner Index Clamp 5.375", Anodized/Color Accent, Right	2

Item Number	Part Number	Description	Quantity
21k	114009	Rear Tower Inner Index Clamp 6.250", Black, Right	2
21l	114009_ _ _	Rear Tower Inner Index Clamp 6.250", Anodized/Color Accent, Right	2
21m	114034	Rear Tower Inner Index Clamp 2.125", Black, Left	2
21n	114034_ _ _	Rear Tower Inner Index Clamp 2.125", Anodized/Color Accent, Left	2
21o	114035	Rear Tower Inner Index Clamp 2.875", Black, Left	2
21p	114035_ _ _	Rear Tower Inner Index Clamp 2.875", Anodized/Color Accent, Left	2
21q	114036	Rear Tower Inner Index Clamp 3.625, Black, Left	2
21r	114036_ _ _	Rear Tower Inner Index Clamp 3.625, Anodized/Color Accent, Left	2
21s	114037	Rear Tower Inner Index Clamp 4.500", Black, Left	2
21t	114037_ _ _	Rear Tower Inner Index Clamp 4.500", Anodized/Color Accent, Left	2
21u	114038	Rear Tower Inner Index Clamp 5.375", Black, Left	2
21v	114038_ _ _	Rear Tower Inner Index Clamp 5.375", Anodized/Color Accent, Left	2
21w	114039	Rear Tower Inner Index Clamp 6.250", Black, Left	2
21x	114039_ _ _	Rear Tower Inner Index Clamp 6.250", Anodized/Color Accent, Left	2
22	001788	Button Assembly	2
23	114003	Rear Tower Outer Clamp, Black	4
24	102326	Flat Washer ID .254" x OD .396" Thickness .047" Zinc	4
25	100780	M6 x 25 SHCS ZC	4
27	119699	Tower Spacer	2
28	000923	Camber Mount Tower Short Black Anodized Rigid	2
29	000920	Camber Mount Cap Rigid	2
31	101180	M6 x 20 SHCS BLK ZC	4

Rogue2 and Rogue XP One Arm Drive Drive Shaft Utilization Chart				
Chair Width	Camber	Wheel Size	Wheel Spacing	Drive Shaft
11	0	20" - 24"	1", 1.25", 1.5", 1.75"	111503 - One Arm Drive - Quick Release Zero Camber Drive Shaft 177-255mm
	2	20" - 24"	1.25", 1.5", 1.75"	111498 - One Arm Drive - Quick Release Camber Drive Shaft 220-280mm
	4	20"	0.75", 1", 1.25", 1.5"	111498 - One Arm Drive - Quick Release Camber Drive Shaft 220-280mm
		22" - 24"	0.75", 1", 1.25"	111498 - One Arm Drive - Quick Release Camber Drive Shaft 220-280mm
			1.5"	111499 - One Arm Drive - Quick Release Camber Drive Shaft 270-330mm
12	0	20" - 24"	1"	111503 - One Arm Drive - Quick Release Zero Camber Drive Shaft 177-255mm
			1.25", 1.5", 1.75"	111504 - One Arm Drive - Quick Release Zero Camber Drive Shaft 225-295mm
	2	20" - 24"	1.25"	111498 - One Arm Drive - Quick Release Camber Drive Shaft 220-280mm
			1.5", 1.75"	111499 - One Arm Drive - Quick Release Camber Drive Shaft 270-330mm
	4	20"	0.75", 1"	111498 - One Arm Drive - Quick Release Camber Drive Shaft 220-280mm
13	0	20" - 24"	1", 1.25"	111504 - One Arm Drive - Quick Release Zero Camber Drive Shaft 225-295mm
		20" - 24"	1.5", 1.75"	111505 - One Arm Drive - Quick Release Zero Camber Drive Shaft 260-370mm
	2	20" - 24"	1.25", 1.5", 1.75"	111499 - One Arm Drive - Quick Release Camber Drive Shaft 270-330mm
	4	20"	0.75", 1", 1.25", 1.5"	111499 - One Arm Drive - Quick Release Camber Drive Shaft 270-330mm
		22" - 24"	0.75", 1", 1.25"	111499 - One Arm Drive - Quick Release Camber Drive Shaft 270-330mm
14	0	20" - 24"	1", 1.25", 1.5", 1.75"	111505 - One Arm Drive - Quick Release Zero Camber Drive Shaft 260-370mm
	2	20" - 24"	1.25"	111499 - One Arm Drive - Quick Release Camber Drive Shaft 270-330mm
			1.5", 1.75"	111500 - One Arm Drive - Quick Release Camber Drive Shaft 295-370mm
	4	20"	0.75", 1"	111499 - One Arm Drive - Quick Release Camber Drive Shaft 270-330mm
		22" - 24"	1.25", 1.5"	111500 - One Arm Drive - Quick Release Camber Drive Shaft 295-370mm
15	0	20" - 24"	1", 1.25", 1.5", 1.75"	111505 - One Arm Drive - Quick Release Zero Camber Drive Shaft 260-370mm
			1.25", 1.5"	111500 - One Arm Drive - Quick Release Camber Drive Shaft 295-370mm
	2	20" - 24"	1.75"	111501 - One Arm Drive - Quick Release Camber Drive Shaft 350-460mm
	4	20"	0.75", 1", 1.25"	111500 - One Arm Drive - Quick Release Camber Drive Shaft 295-370mm
		22" - 24"	1.5"	111501 - One Arm Drive - Quick Release Camber Drive Shaft 350-460mm
16	0	20" - 24"	0.75", 1"	111500 - One Arm Drive - Quick Release Camber Drive Shaft 295-370mm
			1", 1.25", 1.5"	111501 - One Arm Drive - Quick Release Camber Drive Shaft 350-460mm
	2	20" - 24"	1.25", 1.5", 1.75"	111501 - One Arm Drive - Quick Release Camber Drive Shaft 350-460mm
			1.75"	111501 - One Arm Drive - Quick Release Camber Drive Shaft 350-460mm
	4	20"	0.75", 1", 1.25", 1.5"	111501 - One Arm Drive - Quick Release Camber Drive Shaft 350-460mm
17	0	20" - 24"	1", 1.25", 1.5", 1.75"	111506 - One Arm Drive - Quick Release Zero Camber Drive Shaft 330-440mm
	2	20" - 24"	1.25", 1.5", 1.75"	111501 - One Arm Drive - Quick Release Camber Drive Shaft 350-460mm
	4	20" - 24"	0.75", 1", 1.25", 1.5"	111501 - One Arm Drive - Quick Release Camber Drive Shaft 350-460mm
18	0	20" - 24"	1", 1.25", 1.5", 1.75"	111506 - One Arm Drive - Quick Release Zero Camber Drive Shaft 330-440mm
	2	20" - 24"	1.25", 1.5", 1.75"	111501 - One Arm Drive - Quick Release Camber Drive Shaft 350-460mm
	4	20"	0.75", 1", 1.25", 1.5"	111501 - One Arm Drive - Quick Release Camber Drive Shaft 350-460mm
		22" - 24"	0.75", 1", 1.25"	111501 - One Arm Drive - Quick Release Camber Drive Shaft 350-460mm
19	0	20" - 24"	1"	111506 - One Arm Drive - Quick Release Zero Camber Drive Shaft 330-440mm
			1.5", 1.75"	111507 - One Arm Drive - Quick Release Zero Camber Drive Shaft 421-491mm
	2	20" - 24"	1.25"	111501 - One Arm Drive - Quick Release Camber Drive Shaft 350-460mm
			1.5", 1.75"	111502 - One Arm Drive - Quick Release Camber Drive Shaft 420-530mm
	4	20"	0.75", 1"	111501 - One Arm Drive - Quick Release Camber Drive Shaft 350-460mm
20	0	20" - 24"	1", 1.25", 1.5", 1.75"	111507 - One Arm Drive - Quick Release Zero Camber Drive Shaft 421-491mm
	2	20" - 24"	1.25", 1.5", 1.75"	111502 - One Arm Drive - Quick Release Camber Drive Shaft 420-530mm
	4	20" - 24"	0.75", 1", 1.25", 1.5"	111502 - One Arm Drive - Quick Release Camber Drive Shaft 420-530mm