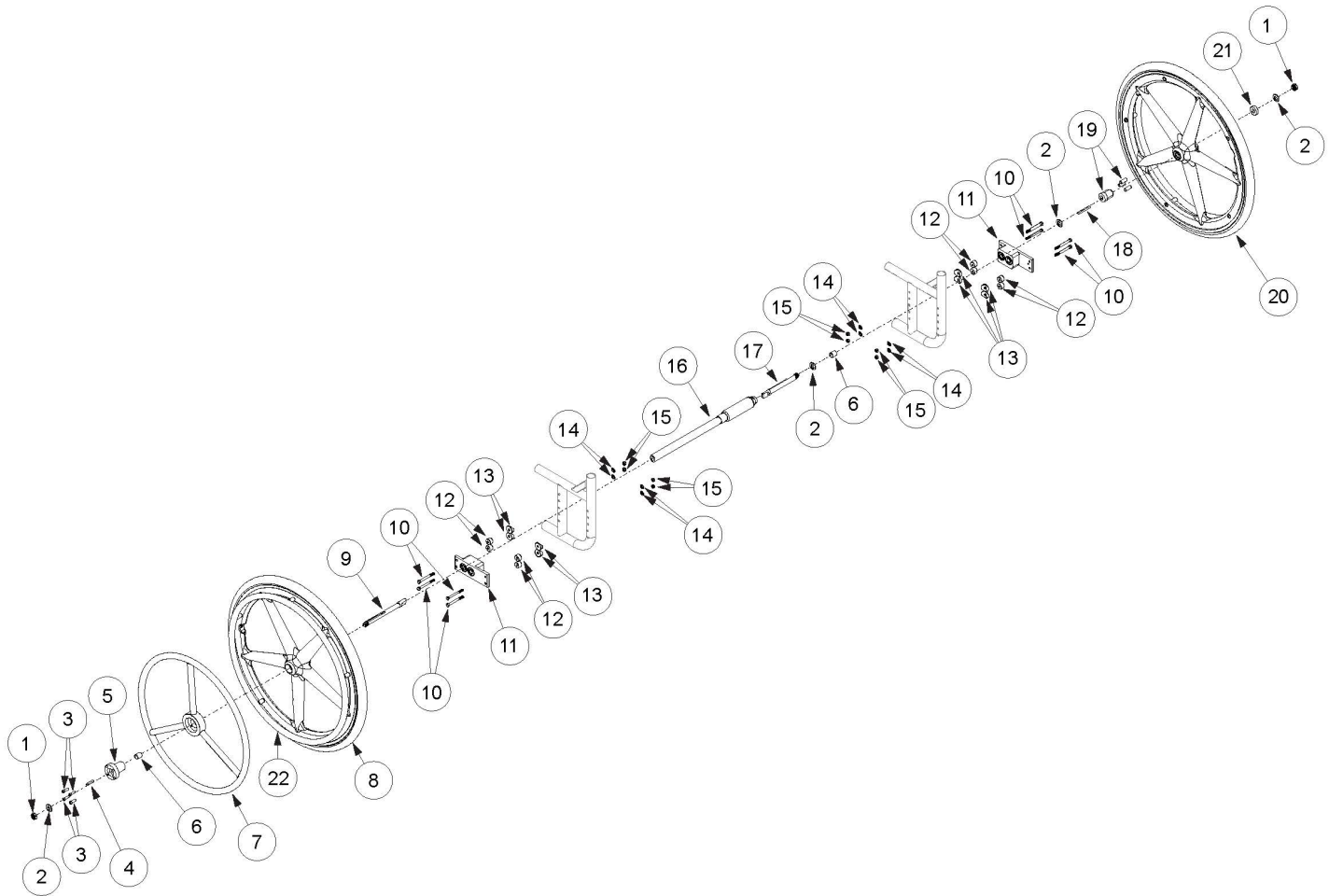


(Discontinued) Catalyst / Spark One Arm Drive Blade Style



One Arm Drive Kits do not include rear tires <p>

If retrofitting from Hex One Arm Drive, you will need a new drive shaft, axles (#9 and #17), One Arm Drive spacer (#6) and installation instruction DCN0503.

Item Number	Part Number	Description	Quantity	Retail
1 - 6, 7a, 8a, 9, 10a, 10b, 10d, 10e, 10g, 11, 12, 13b, 14, 15, 16a, 17a, 18, 19a, 20a, 21, 22a	109334	Spark Blade One Arm Drive Retrofit Kit, 20" Mag with Aluminum Drive Handrim, 8.72" Drive Shaft <i>Used on 11" wide Spark with Height Adjustable T-Arms or 12" wide Spark with Pediatric T-Arms, Flip Up Arms, or No Arms</i>	1	\$1,780.77
1 - 6, 7a, 8a, 9, 10a, 10b, 10d, 10e, 10g, 11, 12, 13b, 14, 15, 16a, 17b, 18, 19a, 20a, 21, 22a	109335	Spark Blade One Arm Drive Retrofit Kit, 20" Mag with Aluminum Drive Handrim, 8.72" Drive Shaft, Short Axle Assembly	1	\$1,780.77

Item Number	Part Number	Description	Quantity	Retail
		<i>Used on 11" wide Spark with Pediatric T-Arms, Flip Up Arms, or No Arms</i>		
1 - 6, 7a, 8a, 9, 10a, 10b, 10d, 10e, 10g, 11, 12, 13b, 14, 15, 16b, 17a, 18, 19a, 20a, 21, 22a	109336	Spark Blade One Arm Drive Retrofit Kit, 20" Mag with Aluminum Drive Handrim, 9.72" Drive Shaft <i>Used on 12" wide Spark with Height Adjustable T-Arms or 13" wide Spark with Pediatric T-Arms, Flip Up Arms, or No Arms</i>	1	\$1,780.77
1 - 6, 7a, 8a, 9, 10a - 10h, 11, 12, 13b, 14, 15, 16c, 17a, 18, 19a, 20a, 21, 22a	109337	Catalyst/Spark Blade One Arm Drive Retrofit Kit, 20" Mag with Aluminum Drive Handrim, 10.74" Drive Shaft <i>Used on 13" wide Spark with Height Adjustable T-Arms or 14" wide Catalyst/Spark with Pediatric T-Arms, Flip Up Arms, Swing Away or No Arms</i>	1	\$1,780.77
1 - 6, 7a, 8a, 9, 10a - 10h, 11, 12, 13b, 14, 15, 16d, 17a, 18, 19a, 20a, 21, 22a	109338	Catalyst/Spark Blade One Arm Drive Retrofit Kit, 20" Mag with Aluminum Drive Handrim, 11.72" Drive Shaft <i>Used on 14" wide Catalyst/Spark with Height Adjustable T-Arms, Flip Back or Height Adjustable Flip Back Arms or 15" wide Catalyst/Spark with Pediatric T-Arms, Flip Up Arms, Swing Away or No Arms</i>	1	\$1,780.77
1 - 6, 7a, 8a, 9, 10a - 10h, 11, 12, 13b, 14, 15, 16e, 17a, 18, 19a, 20a, 21, 22a	109339	Catalyst/Spark Blade One Arm Drive Retrofit Kit, 20" Mag with Aluminum Drive Handrim, 12.72" Drive Shaft <i>Used on 15" wide Catalyst/Spark with Height Adjustable T-Arms, Flip Back or Height Adjustable Flip Back Arms or 16" wide Catalyst/Spark with Pediatric T-Arms, Flip Up Arms, Swing Away or No Arms</i>	1	\$1,780.77
1 - 6, 7a, 8a, 9, 10a - 10h, 11, 12, 13b, 14, 15, 16f, 17a, 18, 19a, 20a, 21, 22a	109340	Catalyst/Spark Blade One Arm Drive Retrofit Kit, 20" Mag with Aluminum Drive Handrim, 13.82" Drive Shaft <i>Used on 16" wide Catalyst/Spark with Height Adjustable T-Arms, Flip Back or Height Adjustable Flip Back Arms or 17" wide Catalyst with Pediatric T-Arms, Flip Up Arms, Swing Away or No Arms</i>	1	\$1,780.77
1 - 6, 7a, 8a, 9, 10a - 10h, 11, 12, 13b, 14, 15, 16g, 17a, 18, 19a, 20a, 21, 22a	109341	Catalyst Blade One Arm Drive Retrofit Kit, 20" Mag with Aluminum Drive Handrim, 14.67" Drive Shaft <i>Used on 17" wide Catalyst with Height Adjustable T-Arms, Flip Back or Height Adjustable Flip Back Arms or 18" wide Catalyst with Pediatric T-Arms, Flip Up Arms, Swing Away or No Arms</i>	1	\$1,780.77

Item Number	Part Number	Description	Quantity	Retail
1 - 6, 7a, 8a, 9, 10a - 10h, 11, 12, 13b, 14, 15, 16i, 17a, 18, 19a, 20a, 21, 22a	109343	Catalyst Blade One Arm Drive Retrofit Kit, 20" Mag with Aluminum Drive Handrim, 16.67" Drive Shaft <i>Used on 19" wide Catalyst with Height Adjustable T-Arms, Flip Back or Height Adjustable Flip Back Arms or 20" wide Catalyst with Pediatric T-Arms, Flip Up Arms, Swing Away or No Arms</i>	1	\$1,780.77
1 - 6, 7a, 8a, 9, 10a - 10h, 11, 12, 13b, 14, 15, 16j, 17a, 18, 19a, 20a, 21, 22a	109344	Catalyst Blade One Arm Drive Retrofit Kit, 20" Mag with Aluminum Drive Handrim, 17.67" Drive Shaft <i>Used on 20" wide Catalyst with Height Adjustable T-Arms, Flip Back or Height Adjustable Flip Back Arms or 21" wide Catalyst with Pediatric T-Arms, Flip Up Arms, Swing Away or No Arms</i>	1	\$1,780.77
1 - 6, 7a, 8a, 9, 10a - 10h, 11, 12, 13b, 14, 15, 16k, 17a, 18, 19a, 20a, 21, 22a	109345	Catalyst Blade One Arm Drive Retrofit Kit, 20" Mag with Aluminum Drive Handrim, 18.67" Drive Shaft <i>Used on 21" wide Catalyst with Height Adjustable T-Arms, Flip Back or Height Adjustable Flip Back Arms or 22" wide Catalyst with Pediatric T-Arms, Flip Up Arms, Swing Away or No Arms</i>	1	\$1,780.77
1 - 6, 7a, 8a, 9, 10a - 10h, 11, 12, 13b, 14, 15, 16l, 17a, 18, 19a, 20a, 21, 22a	109346	Catalyst Blade One Arm Drive Retrofit Kit, 20" Mag with Aluminum Drive Handrim, 19.67" Drive Shaft <i>Used on 22" wide Catalyst with Height Adjustable T-Arms, Flip Back or Height Adjustable Flip Back Arms</i>	1	\$1,780.77
1 - 6, 7d, 8a, 9, 10a, 10b, 10d, 10e, 10g, 11, 12, 13b, 14, 15, 16a, 17a, 18, 19a, 20a, 21, 22a	109347	Spark Blade One Arm Drive Retrofit Kit, 20" Mag with Poly Coated Drive Handrim, 8.72" Drive Shaft <i>Used on 11" wide Spark with Height Adjustable T-Arms or 12" wide Spark with Pediatric T-Arms, Flip Up Arms, or No Arms</i>	1	\$1,990.89
1 - 6, 7d, 8a, 9, 10a, 10b, 10d, 10e, 10g, 11, 12, 13b, 14, 15, 16a, 17b, 18, 19a, 20a, 21, 22a	109348	Spark Blade One Arm Drive Retrofit Kit, 20" Mag with Poly Coated Drive Handrim, 8.72" Drive Shaft, Short Axle Assembly <i>Used on 11" wide Spark with Pediatric T-Arms, Flip Up Arms, or No Arms</i>	1	\$1,990.89
1 - 6, 7d, 8a, 9, 10a, 10b, 10d, 10e, 10g, 11, 12, 13b, 14, 15, 16b, 17a, 18, 19a, 20a, 21, 22a	109349	Spark Blade One Arm Drive Retrofit Kit, 20" Mag with Poly Coated Drive Handrim, 9.72" Drive Shaft	1	\$1,990.89

Item Number	Part Number	Description	Quantity	Retail
		<i>Used on 12" wide Spark with Height Adjustable T-Arms or 13" wide Spark with Pediatric T-Arms, Flip Up Arms, or No Arms</i>		
1 - 6, 7d, 8a, 9, 10a - 10h, 11, 12, 13b, 14, 15, 16c, 17a, 18, 19a, 20a, 21, 22a	109350	Catalyst/Spark Blade One Arm Drive Retrofit Kit, 20" Mag with Poly Coated Drive Handrim, 10.74" Drive Shaft <i>Used on 13" wide Spark with Height Adjustable T-Arms or 14" wide Catalyst/Spark with Pediatric T-Arms, Flip Up Arms, Swing Away or No Arms</i>	1	\$1,990.89
1 - 6, 7d, 8a, 9, 10a - 10h, 11, 12, 13b, 14, 15, 16d, 17a, 18, 19a, 20a, 21, 22a	109351	Catalyst/Spark Blade One Arm Drive Retrofit Kit, 20" Mag with Poly Coated Drive Handrim, 11.72" Drive Shaft <i>Used on 14" wide Catalyst/Spark with Height Adjustable T-Arms, Flip Back or Height Adjustable Flip Back Arms or 15" wide Catalyst/Spark with Pediatric T-Arms, Flip Up Arms, Swing Away or No Arms</i>	1	\$1,990.89
1 - 6, 7d, 8a, 9, 10a - 10h, 11, 12, 13b, 14, 15, 16e, 17a, 18, 19a, 20a, 21, 22a	109352	Catalyst/Spark Blade One Arm Drive Retrofit Kit, 20" Mag with Poly Coated Drive Handrim, 12.72" Drive Shaft <i>Used on 15" wide Catalyst/Spark with Height Adjustable T-Arms, Flip Back or Height Adjustable Flip Back Arms or 16" wide Catalyst/Spark with Pediatric T-Arms, Flip Up Arms, Swing Away or No Arms</i>	1	\$1,990.89
1 - 6, 7d, 8a, 9, 10a - 10h, 11, 12, 13b, 14, 15, 16f, 17a, 18, 19a, 20a, 21, 22a	109353	Catalyst/Spark Blade One Arm Drive Retrofit Kit, 20" Mag with Poly Coated Drive Handrim, 13.82" Drive Shaft <i>Used on 16" wide Catalyst/Spark with Height Adjustable T-Arms, Flip Back or Height Adjustable Flip Back Arms or 17" wide Catalyst with Pediatric T-Arms, Flip Up Arms, Swing Away or No Arms</i>	1	\$1,990.89
1 - 6, 7d, 8a, 9, 10a - 10h, 11, 12, 13b, 14, 15, 16g, 17a, 18, 19a, 20a, 21, 22a	109354	Catalyst Blade One Arm Drive Retrofit Kit, 20" Mag with Poly Coated Drive Handrim, 14.67" Drive Shaft <i>Used on 17" wide Catalyst with Height Adjustable T-Arms, Flip Back or Height Adjustable Flip Back Arms or 18" wide Catalyst with Pediatric T-Arms, Flip Up Arms, Swing Away or No Arms</i>	1	\$1,990.89
1 - 6, 7d, 8a, 9, 10a - 10h, 11, 12, 13b, 14, 15, 16i, 17a, 18, 19a, 20a, 21, 22a	109356	Catalyst Blade One Arm Drive Retrofit Kit, 20" Mag with Poly Coated Drive Handrim, 16.67" Drive Shaft <i>Used on 19" wide Catalyst with Height Adjustable T-Arms, Flip Back or Height Adjustable Flip Back Arms or 20" wide Catalyst with Pediatric T-Arms, Flip Up Arms, Swing Away or No Arms</i>	1	\$1,990.89

Item Number	Part Number	Description	Quantity	Retail
1 - 6, 7d, 8a, 9, 10a - 10h, 11, 12, 13b, 14, 15, 16j, 17a, 18, 19a, 20a, 21, 22a	109357	Catalyst Blade One Arm Drive Retrofit Kit, 20" Mag with Poly Coated Drive Handrim, 17.67" Drive Shaft <i>Used on 20" wide Catalyst with Height Adjustable T-Arms, Flip Back or Height Adjustable Flip Back Arms or 21" wide Catalyst with Pediatric T-Arms, Flip Up Arms, Swing Away or No Arms</i>	1	\$1,990.89
1 - 6, 7d, 8a, 9, 10a - 10h, 11, 12, 13b, 14, 15, 16k, 17a, 18, 19a, 20a, 21, 22a	109358	Catalyst Blade One Arm Drive Retrofit Kit, 20" Mag with Poly Coated Drive Handrim, 18.67" Drive Shaft <i>Used on 21" wide Catalyst with Height Adjustable T-Arms, Flip Back or Height Adjustable Flip Back Arms or 22" wide Catalyst with Pediatric T-Arms, Flip Up Arms, Swing Away or No Arms</i>	1	\$1,990.89
1 - 6, 7d, 8a, 9, 10a - 10h, 11, 12, 13b, 14, 15, 16l, 17a, 18, 19a, 20a, 21, 22a	109359	Catalyst Blade One Arm Drive Retrofit Kit, 20" Mag with Poly Coated Drive Handrim, 19.67" Drive Shaft <i>Used on 22" wide Catalyst with Height Adjustable T-Arms, Flip Back or Height Adjustable Flip Back Arms</i>	1	\$1,990.89
1 - 6, 7b, 8b, 9, 10a, 10b, 10d, 10e, 10g, 11, 12, 13b, 14, 15, 16a, 17a, 18, 19a, 20b, 21, 22b	109360	Spark Blade One Arm Drive Retrofit Kit, 22" Mag with Aluminum Drive Handrim, 8.72" Drive Shaft <i>Used on 11" wide Spark with Height Adjustable T-Arms or 12" wide Spark with Pediatric T-Arms, Flip Up Arms, or No Arms</i>	1	\$1,780.77
1 - 6, 7b, 8b, 9, 10a, 10b, 10d, 10e, 10g, 11, 12, 13b, 14, 15, 16a, 17b, 18, 19a, 20b, 21, 22b	109361	Spark Blade One Arm Drive Retrofit Kit, 22" Mag with Aluminum Drive Handrim, 8.72" Drive Shaft, Short Axle Assembly <i>Used on 11" wide Spark with Pediatric T-Arms, Flip Up Arms, or No Arms</i>	1	\$1,780.77
1 - 6, 7b, 8b, 9, 10a, 10b, 10d, 10e, 10g, 11, 12, 13b, 14, 15, 16b, 17a, 18, 19a, 20b, 21, 22b	109362	Spark Blade One Arm Drive Retrofit Kit, 22" Mag with Aluminum Drive Handrim, 9.72" Drive Shaft <i>Used on 12" wide Spark with Height Adjustable T-Arms or 13" wide Spark with Pediatric T-Arms, Flip Up Arms, or No Arms</i>	1	\$1,780.77
1 - 6, 7b, 8b, 9, 10a - 10h, 11, 12, 13b, 14, 15, 16c, 17a, 18, 19a, 20b, 21, 22b	109363	Catalyst/Spark Blade One Arm Drive Retrofit Kit, 22" Mag with Aluminum Drive Handrim, 10.74" Drive Shaft	1	\$1,780.77

Item Number	Part Number	Description	Quantity	Retail
		<i>Used on 13" wide Spark with Height Adjustable T-Arms or 14" wide Catalyst/Spark with Pediatric T-Arms, Flip Up Arms, Swing Away or No Arms</i>		
1 - 6, 7b, 8b, 9, 10a - 10h, 11, 12, 13b, 14, 15, 16d, 17a, 18, 19a, 20b, 21, 22b	109364	Catalyst/Spark Blade One Arm Drive Retrofit Kit, 22" Mag with Aluminum Drive Handrim, 11.72" Drive Shaft <i>Used on 14" wide Catalyst/Spark with Height Adjustable T-Arms, Flip Back or Height Adjustable Flip Back Arms or 15" wide Catalyst/Spark with Pediatric T-Arms, Flip Up Arms, Swing Away or No Arms</i>	1	\$1,780.77
1 - 6, 7b, 8b, 9, 10a - 10h, 11, 12, 13b, 14, 15, 16e, 17a, 18, 19a, 20b, 21, 22b	109365	Catalyst/Spark Blade One Arm Drive Retrofit Kit, 22" Mag with Aluminum Drive Handrim, 12.72" Drive Shaft <i>Used on 15" wide Catalyst/Spark with Height Adjustable T-Arms, Flip Back or Height Adjustable Flip Back Arms or 16" wide Catalyst/Spark with Pediatric T-Arms, Flip Up Arms, Swing Away or No Arms</i>	1	\$1,780.77
1 - 6, 7b, 8b, 9, 10a - 10h, 11, 12, 13b, 14, 15, 16f, 17a, 18, 19a, 20b, 21, 22b	109366	Catalyst/Spark Blade One Arm Drive Retrofit Kit, 22" Mag with Aluminum Drive Handrim, 13.82" Drive Shaft <i>Used on 16" wide Catalyst/Spark with Height Adjustable T-Arms, Flip Back or Height Adjustable Flip Back Arms or 17" wide Catalyst with Pediatric T-Arms, Flip Up Arms, Swing Away or No Arms</i>	1	\$1,780.77
1 - 6, 7b, 8b, 9, 10a - 10h, 11, 12, 13b, 14, 15, 16g, 17a, 18, 19a, 20b, 21, 22b	109367	Catalyst Blade One Arm Drive Retrofit Kit, 22" Mag with Aluminum Drive Handrim, 14.67" Drive Shaft <i>Used on 17" wide Catalyst with Height Adjustable T-Arms, Flip Back or Height Adjustable Flip Back Arms or 18" wide Catalyst with Pediatric T-Arms, Flip Up Arms, Swing Away or No Arms</i>	1	\$1,780.77
1 - 6, 7b, 8b, 9, 10a - 10h, 11, 12, 13b, 14, 15, 16i, 17a, 18, 19a, 20b, 21, 22b	109369	Catalyst Blade One Arm Drive Retrofit Kit, 22" Mag with Aluminum Drive Handrim, 16.67" Drive Shaft <i>Used on 19" wide Catalyst with Height Adjustable T-Arms, Flip Back or Height Adjustable Flip Back Arms or 20" wide Catalyst with Pediatric T-Arms, Flip Up Arms, Swing Away or No Arms</i>	1	\$1,780.77
1 - 6, 7b, 8b, 9, 10a - 10h, 11, 12, 13b, 14, 15, 16j, 17a, 18, 19a, 20b, 21, 22b	109370	Catalyst Blade One Arm Drive Retrofit Kit, 22" Mag with Aluminum Drive Handrim, 17.67" Drive Shaft <i>Used on 20" wide Catalyst with Height Adjustable T-Arms, Flip Back or Height Adjustable Flip Back Arms or 21" wide Catalyst with Pediatric T-Arms, Flip Up Arms, Swing Away or No Arms</i>	1	\$1,780.77

Item Number	Part Number	Description	Quantity	Retail
1 - 6, 7b, 8b, 9, 10a - 10h, 11, 12, 13b, 14, 15, 16k, 17a, 18, 19a, 20b, 21, 22b	109371	Catalyst Blade One Arm Drive Retrofit Kit, 22" Mag with Aluminum Drive Handrim, 18.67" Drive Shaft <i>Used on 21" wide Catalyst with Height Adjustable T-Arms, Flip Back or Height Adjustable Flip Back Arms or 22" wide Catalyst with Pediatric T-Arms, Flip Up Arms, Swing Away or No Arms</i>	1	\$1,780.77
1 - 6, 7b, 8b, 9, 10a - 10h, 11, 12, 13b, 14, 15, 16l, 17a, 18, 19a, 20b, 21, 22b	109372	Catalyst Blade One Arm Drive Retrofit Kit, 22" Mag with Aluminum Drive Handrim, 19.67" Drive Shaft <i>Used on 22" wide Catalyst with Height Adjustable T-Arms, Flip Back or Height Adjustable Flip Back Arms</i>	1	\$1,780.77
1 - 6, 7e, 8b, 9, 10a, 10b, 10d, 10e, 10g, 11, 12, 13b, 14, 15, 16a, 17a, 18, 19a, 20b, 21, 22b	109373	Spark Blade One Arm Drive Retrofit Kit, 22" Mag with Poly Coated Drive Handrim, 8.72" Drive Shaft <i>Used on 11" wide Spark with Height Adjustable T-Arms or 12" wide Spark with Pediatric T-Arms, Flip Up Arms, or No Arms</i>	1	\$1,990.89
1 - 6, 7e, 8b, 9, 10a, 10b, 10d, 10e, 10g, 11, 12, 13b, 14, 15, 16a, 17b, 18, 19a, 20b, 21, 22b	109374	Spark Blade One Arm Drive Retrofit Kit, 22" Mag with Poly Coated Drive Handrim, 8.72" Drive Shaft, Short Axle Assembly <i>Used on 11" wide Spark with Pediatric T-Arms, Flip Up Arms, or No Arms</i>	1	\$1,990.89
1 - 6, 7e, 8b, 9, 10a, 10b, 10d, 10e, 10g, 11, 12, 13b, 14, 15, 16b, 17a, 18, 19a, 20b, 21, 22b	109375	Spark Blade One Arm Drive Retrofit Kit, 22" Mag with Poly Coated Drive Handrim, 9.72" Drive Shaft <i>Used on 12" wide Spark with Height Adjustable T-Arms or 13" wide Spark with Pediatric T-Arms, Flip Up Arms, or No Arms</i>	1	\$1,990.89
1 - 6, 7e, 8b, 9, 10a - 10h, 11, 12, 13b, 14, 15, 16c, 17a, 18, 19a, 20b, 21, 22b	109376	Catalyst/Spark Blade One Arm Drive Retrofit Kit, 22" Mag with Poly Coated Drive Handrim, 10.74" Drive Shaft <i>Used on 13" wide Spark with Height Adjustable T-Arms or 14" wide Catalyst/Spark with Pediatric T-Arms, Flip Up Arms, Swing Away or No Arms</i>	1	\$1,990.89
1 - 6, 7e, 8b, 9, 10a - 10h, 11, 12, 13b, 14, 15, 16d, 17a, 18, 19a, 20b, 21, 22b	109377	Catalyst/Spark Blade One Arm Drive Retrofit Kit, 22" Mag with Poly Coated Drive Handrim, 11.72" Drive Shaft	1	\$1,990.89

Item Number	Part Number	Description	Quantity	Retail
		<i>Used on 14" wide Catalyst/Spark with Height Adjustable T-Arms, Flip Back or Height Adjustable Flip Back Arms or 15" wide Catalyst/Spark with Pediatric T-Arms, Flip Up Arms, Swing Away or No Arms</i>		
1 - 6, 7e, 8b, 9, 10a - 10h, 11, 12, 13b, 14, 15, 16e, 17a, 18, 19a, 20b, 21, 22b	109378	Catalyst/Spark Blade One Arm Drive Retrofit Kit, 22" Mag with Poly Coated Drive Handrim, 12.72" Drive Shaft <i>Used on 15" wide Catalyst/Spark with Height Adjustable T-Arms, Flip Back or Height Adjustable Flip Back Arms or 16" wide Catalyst/Spark with Pediatric T-Arms, Flip Up Arms, Swing Away or No Arms</i>	1	\$1,990.89
1 - 6, 7e, 8b, 9, 10a - 10h, 11, 12, 13b, 14, 15, 16f, 17a, 18, 19a, 20b, 21, 22b	109379	Catalyst/Spark Blade One Arm Drive Retrofit Kit, 22" Mag with Poly Coated Drive Handrim, 13.82" Drive Shaft <i>Used on 16" wide Catalyst/Spark with Height Adjustable T-Arms, Flip Back or Height Adjustable Flip Back Arms or 17" wide Catalyst with Pediatric T-Arms, Flip Up Arms, Swing Away or No Arms</i>	1	\$1,990.89
1 - 6, 7e, 8b, 9, 10a - 10h, 11, 12, 13b, 14, 15, 16g, 17a, 18, 19a, 20b, 21, 22b	109380	Catalyst Blade One Arm Drive Retrofit Kit, 22" Mag with Poly Coated Drive Handrim, 14.67" Drive Shaft <i>Used on 17" wide Catalyst with Height Adjustable T-Arms, Flip Back or Height Adjustable Flip Back Arms or 18" wide Catalyst with Pediatric T-Arms, Flip Up Arms, Swing Away or No Arms</i>	1	\$1,990.89
1 - 6, 7e, 8b, 9, 10a - 10h, 11, 12, 13b, 14, 15, 16i, 17a, 18, 19a, 20b, 21, 22b	109382	Catalyst Blade One Arm Drive Retrofit Kit, 22" Mag with Poly Coated Drive Handrim, 16.67" Drive Shaft <i>Used on 19" wide Catalyst with Height Adjustable T-Arms, Flip Back or Height Adjustable Flip Back Arms or 20" wide Catalyst with Pediatric T-Arms, Flip Up Arms, Swing Away or No Arms</i>	1	\$1,990.89
1 - 6, 7e, 8b, 9, 10a - 10h, 11, 12, 13b, 14, 15, 16j, 17a, 18, 19a, 20b, 21, 22b	109383	Catalyst Blade One Arm Drive Retrofit Kit, 22" Mag with Poly Coated Drive Handrim, 17.67" Drive Shaft <i>Used on 20" wide Catalyst with Height Adjustable T-Arms, Flip Back or Height Adjustable Flip Back Arms or 21" wide Catalyst with Pediatric T-Arms, Flip Up Arms, Swing Away or No Arms</i>	1	\$1,990.89
1 - 6, 7e, 8b, 9, 10a - 10h, 11, 12, 13b, 14, 15, 16k, 17a, 18, 19a, 20b, 21, 22b	109384	Catalyst Blade One Arm Drive Retrofit Kit, 22" Mag with Poly Coated Drive Handrim, 18.67" Drive Shaft <i>Used on 21" wide Catalyst with Height Adjustable T-Arms, Flip Back or Height Adjustable Flip Back Arms or 22" wide Catalyst with Pediatric T-Arms, Flip Up Arms, Swing Away or No Arms</i>	1	\$1,990.89

Item Number	Part Number	Description	Quantity	Retail
1 - 6, 7e, 8b, 9, 10a - 10h, 11, 12, 13b, 14, 15, 16l, 17a, 18, 19a, 20b, 21, 22b	109385	Catalyst Blade One Arm Drive Retrofit Kit, 22" Mag with Poly Coated Drive Handrim, 19.67" Drive Shaft <i>Used on 22" wide Catalyst with Height Adjustable T-Arms, Flip Back or Height Adjustable Flip Back Arms</i>	1	\$1,990.89
1 - 6, 9, 17a, 18	108075	Blade One Arm Drive Axle Assembly <i>Used on 12" - 22" wide chairs and 11" wide Spark with Height Adjustable T-Arms</i>	1	\$637.50
1 - 6, 9, 17b, 18	108079	Blade One Arm Drive Axle Assembly Short <i>Used on 11" wide Spark with Pediatric T-Arms, Flip Up Arms, or No Arms</i>	1	\$504.90
10a - 10h, 12, 13a, 13b, 14, 15	109438	Catalyst Blade One Arm Drive Attaching Hardware Kit <i>Includes all fasteners required to attach Blade One Arm Drive regardless of chair configuration</i>	1	\$217.59
10a, 10b, 10d, 10e, 10g, 12, 13b, 14, 15	109439	Spark Blade One Arm Drive Attaching Hardware Kit <i>Includes all fasteners required on Spark to attach Blade One Arm Drive regardless of chair configuration</i>	1	\$185.97
	DCN0503	Instruction - Catalyst and Spark Blade One Arm Drive Retrofit Installation	1	
1	101459	1/2-20 NTE JAM NYL INS L/N BLK ZC	2	\$1.58
2	108082	1/2" Washer .030 Thick	6	\$1.02
3	104056	10-32 X 3/4" Socket Head Cap Screw	4	\$1.02
5	108083	Hub Handrim, One Arm Drive	1	\$81.46
6	107564	One Arm Drive Spacer <i>Qty 1 always used on drive side. Qty 2 used with standard 5.03" axle (part number 107574)</i>	2	\$21.21
7a	003200	One Arm Drive Handrim Aluminum 20"	1	\$262.65
7b	003199	One Arm Drive Handrim Aluminum 22"	1	\$262.65
7c	003198	One Arm Drive Handrim Aluminum 24"	1	\$262.65
7d	003203	One Arm Drive Handrim Poly Coated 20"	1	\$414.99
7e	003202	One Arm Drive Handrim Poly Coated 22"	1	\$414.99
7f	003201	One Arm Drive Handrim Poly Coated 24"	1	\$414.99
8a	101961	Wheel X Core Mag 5-Spoke 20" Black	1	\$147.08
8b	101962	Wheel X Core Mag 5-Spoke 22" Black	1	\$141.83
8c	100960	Wheel X Core Mag 5-Spoke 24" Black	1	\$136.58

Item Number	Part Number	Description	Quantity	Retail
10a	100674	M6 x 45 CLS10.9 DIN931 HHCS ZC	4	\$1.58
10b	101826	M6 x 50 HHCS Blk Zn	4	\$2.10
10c	100676	M6 x 55 CLS10.9 DIN931 HHCS ZC	4	\$1.58
10d	100677	M6 x 60 CLS10.9 DIN931 HHCS ZC	4	\$1.58
10e	100679	M6 x 65 CLS 8.8 DIN931 HHCS ZC	4	\$1.58
10f	100680	M6 x 70 CLS 8.8 DIN931 HHCS ZC	4	\$1.58
10g	100544	M6 x 75 CLS 8.8 DIN931 HHCS ZC	4	\$1.58
10h	100660	M6 x 80mm CLS8.8 DIN931 HHCS ZC	4	\$1.58
11	003207	One Arm Drive Catalyst Axle Plate PAIR	1	\$205.92
12	003172	One Arm Drive Cat Axle Plate Spacer <i>Used when Height Adjustable T-Arms (Standard, Low, and Flip Backs) and Flip Back Arms are present.</i>	8	\$14.29
13a	000056	Saddle 1 1/8" <i>Used with Curved Rear Frames</i>	8	\$1.58
13b	000055	Saddle 1" <i>Used with Depth Adjustable / Spark Rear Frames</i>	8	\$1.58
14	100746	M6 Flat Washer Blk Zn	8	\$1.58
15	100658	M6 Nylock Nut Blk Zn	10	\$1.05
16a	107562	One Arm Drive - Blade Drive Shaft 8.72"	1	\$562.82
16b	107563	One Arm Drive - Blade Drive Shaft 9.72"	1	\$562.82
16c	107032	One Arm Drive - Blade Drive Shaft 10.74"	1	\$562.82
16d	107565	One Arm Drive - Blade Drive Shaft 11.72"	1	\$562.82
16e	107566	One Arm Drive - Blade Drive Shaft 12.72"	1	\$562.82
16f	107567	One Arm Drive - Blade Drive Shaft 13.82"	1	\$562.82
16g	107568	One Arm Drive - Blade Drive Shaft 14.67"	1	\$562.82
16i	107570	One Arm Drive - Blade Drive Shaft 16.67"	1	\$562.82
16j	107571	One Arm Drive - Blade Drive Shaft 17.67"	1	\$562.82
16k	107572	One Arm Drive - Blade Drive Shaft 18.67"	1	\$562.82
16l	108072	One Arm Drive - Blade Drive Shaft 19.67"	1	\$562.82
17a	107574	One Arm Drive - Blade Style Axle 5.03"	1	\$92.09

Item Number	Part Number	Description	Quantity	Retail
		<i>Used on 12" - 22" wide chairs and 11" wide Spark with Height Adjustable T-Arms</i>		
17b	108073	One Arm Drive - Blade Style Axle 4.33" <i>Used on 11" wide Spark with Pediatric T-Arms, Flip Up Arms, or No Arms</i>	1	\$87.36
18	108085	Key, Blade One Arm Drive, 3/16" x 2"	1	\$16.29
19a, 20a, 21	505175	20" X Core Mag with One Arm Drive Hub	1	\$254.68
19a, 20b, 21	505176	22" X Core Mag with One Arm Drive Hub	1	\$254.68
19b, 20c, 21	003238	24" X Core Mag with One Arm Drive Hub	1	\$254.68
22a	101897	Handrim Aluminum Anodized 5 Rivet Nut 20"	1	\$68.29
22b	101898	Handrim Aluminum Anodized 5 Rivet Nut 22"	1	\$68.29
22c	100975	Handrim Aluminum Anodized 5 Rivet Nut 24"	1	\$57.78

The same nut, 100658, is used in all configurations.

	Curved Rear Frame								
	No Arms			Flip Back and T-Arms			Swing Away Arms		
	Part No.	Description	Qty	Part No.	Description	Qty	Part No.	Description	Qty
No Options	100674	M6 x 45 HHCS Zn	4	100677	M6 x 60 HHCS Zn	4	100676	M6 x 55 HHCS Zn	2
	100746	M6 Flat Washer Blk Zn	4	100746	M6 Flat Washer Blk Zn	4	100674	M6 x 45 HHCS Zn	2
				000056	Saddle	4	101826	M6 x 50 HHCS Blk Zn	1
				003172	Spacer	4			
Anti-Tips	100674	M6 x 45 HHCS Zn	2	100679	M6 x 65 HHCS Zn	2	100679	M6 x 65 HHCS Zn	2
	101826	M6 x 50 HHCS Black Zn	2	100677	M6 x 60 HHCS Zn	2	100674	M6 x 45 HHCS Zn	2
				000056	Saddle	4	101826	M6 x 50 HHCS Blk Zn	1
				003172	Spacer	4			
Transit	100674	M6 x 45 HHCS Zn	3	100680	M6 x 70 HHCS Zn	2	100677	M6 x 60 HHCS Zn	2
	100676	M6 x 55 HHCS Blk Zn	2	100677	M6 x 60 HHCS Zn	2	100674	M6 x 45 HHCS Zn	2
				100674	M6 x 45 HHCS Zn	1	100676	M6 x 55 HHCS Zn	1
				000056	Saddle	4			
			003172	Spacer	4				
Anti-Tips and Transit	100674	M6 x 45 HHCS Zn	3	100677	M6 x 60 HHCS Zn	2	100680	M6 x 70 HHCS Zn	2
	100679	M6 x 65 HHCS Zn	2	100660	M6 x 80 HHCS Zn	2	100674	M6 x 45 HHCS Zn	2
				100674	M6 x 45 HHCS Zn	1	100676	M6 x 55 HHCS Zn	1
				000056	Saddle	4			
			003172	Spacer	4				

	Depth Adjustable / Spark Rear Frame					
	Angle Adj. Locking Flip Up, Tubular Flip Up, Pediatric T-Arm or No Arms			T-Arms		
	Part No.	Description	Qty	Part No.	Description	Qty
No Options	100674	M6 x 45 HHCS Zn	4	100677	M6 x 60 HHCS Zn	4
	100746	M6 Flat Washer Blk Zn	4	100746	M6 Flat Washer Blk Zn	4
				000055	Saddle	4
				003172	Spacer	4
Anti-Tips	100674	M6 x 45 HHCS Zn	2	100679	M6 x 65 HHCS Zn	2
	101826	M6 x 50 HHCS Black Zn	2	100677	M6 x 60 HHCS Zn	2
				000055	Saddle	4
				003172	Spacer	4
Transit	100674	M6 x 45 HHCS Zn	3	100679	M6 x 65 HHCS Zn	2
	101826	M6 x 50 HHCS Black Zn	2	100677	M6 x 60 HHCS Zn	2
				100674	M6 x 45 HHCS Zn	1
				000055	Saddle	4
			003172	Spacer	4	
Anti-Tips and Transit	100674	M6 x 45 HHCS Zn	3	100544	M6 x 75 HHCS Zn	2
	100677	M6 x 60 HHCS Zn	2	100677	M6 x 60 HHCS Zn	2
				100674	M6 x 45 HHCS Zn	1
				000055	Saddle	4
			003172	Spacer	4	

Catalyst Seat Width	Part No.	Compressed Drive Shaft Length	Extended Drive Shaft Length	Configurations
*11"	107562	7.12"	8.72"	For no arms, Flip-Up & Swing Away
11"	107562	7.12"	8.72"	Saddles + spacers required for flipbacks & T-Arms
12"	107562	7.12"	8.72"	For no arms, Flip-Up & Swing Away
12"	107563	8.12"	9.72"	Saddles + spacers required for flipbacks & T-Arms
13"	107563	8.12"	9.72"	For no arms, Flip-Up & Swing Away
13"	107032	9.14"	10.74"	Saddles + spacers required for flipbacks & T-Arms
14"	107032	9.14"	10.74"	For no arms, Flip-Up & Swing Away
14"	107565	10.12"	11.72"	Saddles + spacers required for flipbacks & T-Arms
15"	107565	10.12"	11.72"	For no arms, Flip-Up & Swing Away
15"	107566	11.12"	12.72"	Saddles + spacers required for flipbacks & T-Arms
16"	107566	11.12"	12.72"	For no arms, Flip-Up & Swing Away
16"	107567	12.22"	13.82"	Saddles + spacers required for flipbacks & T-Arms
17"	107567	12.22"	13.82"	For no arms, Flip-Up & Swing Away
17"	107568	13.07"	14.67"	Saddles + spacers required for flipbacks & T-Arms
18"	107568	13.07"	14.67"	For no arms, Flip-Up & Swing Away
18"	107569	14.07"	15.67"	Saddles + spacers required for flipbacks & T-Arms
19"	107569	14.07"	15.67"	For no arms, Flip-Up & Swing Away
19"	107570	15.07"	16.67"	Saddles + spacers required for flipbacks & T-Arms
20"	107570	15.07"	16.67"	For no arms, Flip-Up & Swing Away
20"	107571	16.07"	17.67"	Saddles + spacers required for flipbacks & T-Arms
21"	107571	16.07"	17.67"	For no arms, Flip-Up & Swing Away
21"	107572	17.07"	18.67"	Saddles + spacers required for flipbacks & T-Arms
22"	107572	17.07"	18.67"	For no arms, Flip-Up & Swing Away
22"	108072	18.07"	19.67"	Saddles + spacers required for flipbacks & T-Arms

*For this configuration, do not use spacer 107567 and replace axle 107574 with axle 108073.