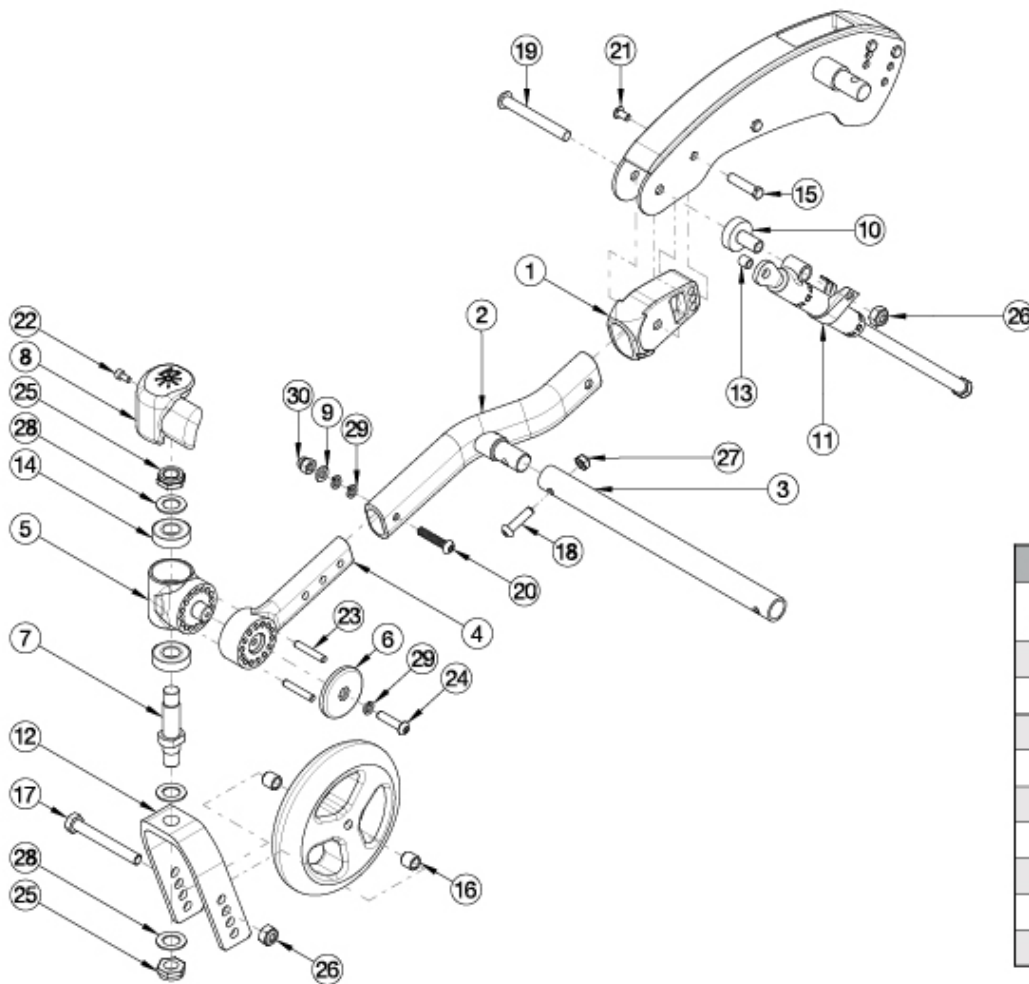


Flip Caster Arm



Growth Strut		
Part No.	Used on Width	Length
002631	10"	9.5"
002632	11"	10.5"
002633	12"	11.5"
002634	13"	12.5"
002635	14"	13.5"
002636	15"	14.5"
002637	16"	15.5"
002638	17"	16.5"
002639	18"	17.5"

Color for the Caster Arm Assemblies is the Frame Color of the chair. If chair was invoiced prior to 5/1/2024, the Lower Caster Arm Assembly for both sides is required when replacement caster barrel, caster arm, or caster arm cover are requested.

Item Number	Part Number	Description	Quantity
1, 2, 4-6, 8a, 9, 14, 15, 18-24, 26, 27, 29-30	502799_ _ _	Caster Arm Assembly, Right	1
1, 2, 4-6, 8b, 9, 14, 15, 18-24, 26, 27, 29-30	502800_ _ _	Caster Arm Assembly, Left	1
4-6, 8a, 14, 22-24, 29	113927	Lower Caster Arm Assembly, Right	1
4-6, 8b, 14, 22-24, 29	113928	Lower Caster Arm Assembly, Left	1
7, 12a, 25, 28	502802	Fork Assembly 5" FLIP	1
7, 12b, 25, 28	502803	Fork Assembly 6" FLIP	1
7, 12c, 25, 28	502804	Fork Assembly 6" Wide FLIP	1

Item Number	Part Number	Description	Quantity
7, 12d, 25, 28	502805	Fork Assembly 7" FLIP	1
7, 12e, 25, 28	502806	Fork Assembly 7" Wide FLIP	1
10, 11a, 13, 19, 26	503213	Mechlock Replacement Kit, 45° Right <i>Used with Standard Axle Plate</i>	1
10, 11b, 13, 19, 26	503214	Mechlock Replacement Kit, 45° Left <i>Used with Standard Axle Plate</i>	1
10, 11a, 11b, 13, 19, 26	502797	Mechlock Replacement Kit, 45° PAIR FLIP <i>Used with Standard Axle Plate</i>	1
10, 11c, 13, 19, 26	503215	Mechlock Replacement Kit, 35° Right <i>Used with Self Propel Axle Plate</i>	1
10, 11d, 13, 19, 26	503216	Mechlock Replacement Kit, 35° Left <i>Used with Self Propel Axle Plate</i>	1
10, 11c, 11d, 13, 19, 26	502798	Mechlock Replacement Kit, 35° PAIR FLIP <i>Used with Self Propel Axle Plate</i>	1
16a, 17a, 26	502653	Caster Attachment Hardware Kit CAT/FCS	1
16b, 17b, 26	502654	Caster Attachment Hardware Kit for 6" and 7" Wide Fork, CAT/FCS	1
5, 14	502801	Caster Barrel with bearings FLIP	1
1, 2	115608_ _ _	Front Frame Tube Weldment w/Adjuster, Flip, Left	1
1, 2	115609_ _ _	Front Frame Tube Weldment w/Adjuster, Flip, Right	1
3a	002631	Frame Growth Strut 9.5"	1
3b	002632	Frame Growth Strut 10.5"	1
3c	002633	Frame Growth Strut 11.5"	1
3d	002634	Frame Growth Strut 12.5"	1
3e	002635	Frame Growth Strut 13.5"	1
3f	002636	Frame Growth Strut 14.5"	1
3g	002637	Frame Growth Strut 15.5"	1
3h	002638	Frame Growth Strut 16.5"	1
3i	002639	Frame Growth Strut 17.5"	1
4	122586	Caster Arm	1
6	122588	Caster Arm Cover	1

Item Number	Part Number	Description	Quantity
7	501208	Caster Stem, Ped Tilt	1
8a	002651	Wear Pad, Caster, Right	1
8b	002652	Wear Pad, Caster, Left	1
9	100746	M6 Flat Washer Blk Zn <i>For hardware used with the Transit Option, see Little Wave Flip Transit System Page</i>	1
10	001865	Spacer, Mechlock	1
11a	001861	Mechlock, 158mm, Right <i>Used with Standard Axle Plate</i>	1
11b	001862	Mechlock, 158mm, Left <i>Used with Standard Axle Plate</i>	1
11c	001863	Mechlock, 129mm, Right <i>Used with Self Propel Axle Plate</i>	1
11d	001864	Mechlock, 129mm, Left <i>Used with Self Propel Axle Plate</i>	1
12a	501209	Caster Fork 5" Flip	1
12b	501210	Caster Fork 6" Flip	1
12c	501211	Caster Fork 6" Wide Flip	1
12d	501212	Caster Fork 7" Flip	1
12e	501213	Caster Fork 7" Wide Flip	1
13	001156	Pivot Bushing Tilt	2
15	000987	Threaded Fastener	1
16a	100792	Caster Spacer D8 x D12 x 10mm / Close Mount Handrim Spacer <i>Used with all casters except 6x2 and 8x2</i>	2
16b	001246	Caster Spacer Black 6 x 2 Poly .472ODX.319IDX.370LG <i>Only used with 6" x 2" casters</i>	2
17a	101829	M8 x 65 HHCS Blk Zn	1
17b	101831	M8 x 80 HHCS Blk Zn <i>Used with wide forks</i>	1
18	101593	M6 x 25 BTN SHCS BLKZC	1
19	102797	M8 x 65, BHCS, Blk Zn	1
20	102625	M6 X 30 BHCS BLK ZC	1

Item Number	Part Number	Description	Quantity
		<i>For hardware used with the Transit Option, see Little Wave Flip Transit System Page</i>	
21	100669	M5 x 10 BTN SHCS BLKZC w/Patch	1
22	102800	M4 x 8mm SHCS Blk Zn	1
23	122589	Pin, Dowel, M5 X 30, DIN6325 <i>Replaced 002737</i>	2
24	115573	M6 x 25, BHCS, CLS 10.9, NYL, BLZ	1
25	100529	M12 x 1.25mm Lock Nut Black	2
26	100659	M8 Nylock Nut Blk Zn	2
27	100658	M6 Nylock Nut Blk Zn	1
28	100682	Washer 1/2" .518 x .875 x .047 F/W Black Zinc	3
29	102810	M6 Lockwasher, Hi-Collar, ZC	1
30	100558	M6 Nyl Ins Domed Cap L/N Zc <i>For hardware used with the Transit Option, see Little Wave Flip Transit System Page</i>	1

Matte Finish	
Code	Color Name
CGM	Charcoal Gray
EGM	Emerald Green
GGM	Graphite Gray*
IBM	Iridescent Burgundy
INM	Iridescent Navy
AGM	Military Green**
RRM	Retro Red
RBM	Royal Blue
SBM	Shadow Black
SWM	Smooth White

* Discontinued Color

** Formerly called Army Green

Gloss Finish	
Code	Color Name
BLK	Black
BLU	Blue
SKY	Blue Skies
BRO	Bright Orange*
PNK	Bubblegum Pink
BUR	Burgundy*
CBL	Candy Blue
PUR	Candy Purple
RED	Candy Red
COP	Copper
DPR	Deep Purple*
EBL	Electric Blue*
GRN	Forest Green*
FUS	Fuchsia*
GSM	Granny Smith
MTF	Metallic Fuchsia*
MOR	Metallic Orange
ORG	Orange*
SAP	Sapphire*
SIL	Silver
TEA	Teal
YLW	Yellow
FLM	Graphic Image Transfer