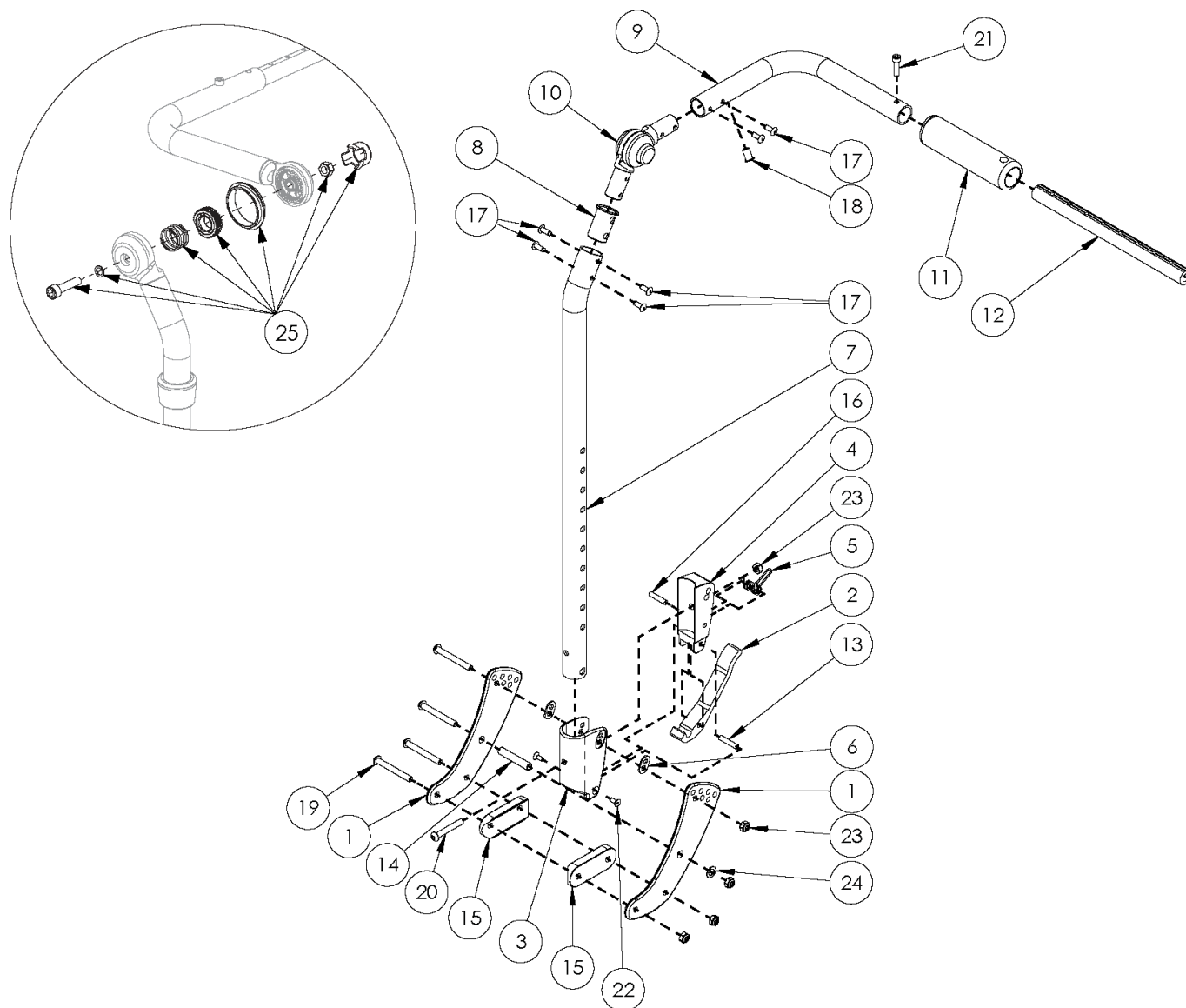


Flip for Leckey Fixed Height with Adjustable Handle Backrest



Item Number	Part Number	Description	Quantity
1a, 6, 14, 15, 19, 23, 24	111273	Backrest Hardware Kit, Flip for Leckey	2
1a, 1b, 6, 14, 15, 19, 23, 24	111271	Transit Backrest Hardware Kit, Flip for Leckey	2
2, 3-5, 7a, 8, 9a, 10, 11, 13, 16-18, 20, 22, 23	111274	Back Assembly w/Latch Insert, Fixed Height with Adjustable Handle, Short, Left, Flip for Leckey <i>Used with serial numbers prior to FLP010784 and serial numbers starting with FLP011080</i>	1

Item Number	Part Number	Description	Quantity
2, 3-5, 7a, 8, 9b, 10, 11, 13, 16-18, 20, 22, 23	111275	Back Assembly w/Latch Insert, Fixed Height with Adjustable Handle, Short, Right, Flip for Leckey <i>Used with serial numbers prior to FLP010784 and serial numbers starting with FLP011080</i>	1
2, 3-5, 7b, 8, 9a, 10, 11, 13, 16-18, 20, 22, 23	111276	Back Assembly w/Latch Insert, Fixed Height with Adjustable Handle, Tall, Left, Flip for Leckey <i>Used with serial numbers prior to FLP010784 and serial numbers starting with FLP011080</i>	1
2, 3-5, 7b, 8, 9b, 10, 11, 13, 16-18, 20, 22, 23	111277	Back Assembly w/Latch Insert, Fixed Height with Adjustable Handle, Tall, Right, Flip for Leckey <i>Used with serial numbers prior to FLP010784 and serial numbers starting with FLP011080</i>	1
1a, 2, 3-6, 7a, 8, 9a, 10, 11, 13-20, 22-24	111278	Back Assembly w/Latch Insert, Fixed Height with Adjustable Handle, Short with Hardware, Left, Flip for Leckey <i>Used with serial numbers prior to FLP010784 and serial numbers starting with FLP011080</i>	1
1a, 2, 3-6, 7a, 8, 9b, 10, 11, 13-20, 22-24	111279	Back Assembly w/Latch Insert, Fixed Height with Adjustable Handle, Short with Hardware, Right, Flip for Leckey <i>Used with serial numbers prior to FLP010784 and serial numbers starting with FLP011080</i>	1
1a, 2, 3-6, 7b, 8, 9a, 10, 11, 13-20, 22-24	111280	Back Assembly w/Latch Insert, Fixed Height with Adjustable Handle, Tall with Hardware, Left, Flip for Leckey <i>Used with serial numbers prior to FLP010784 and serial numbers starting with FLP011080</i>	1
1a, 2, 3-6, 7b, 8, 9b, 10, 11, 13-20, 22-24	111281	Back Assembly w/Latch Insert, Fixed Height with Adjustable Handle, Tall with Hardware, Right, Flip for Leckey <i>Used with serial numbers prior to FLP010784 and serial numbers starting with FLP011080</i>	1
1a, 1b, 2, 3-6, 7a, 8, 9a, 10, 11, 13-20, 22-24	111282	Transit Back Assembly w/Latch Insert, Fixed Height with Adjustable Handle, Short with Hardware, Left, Flip for Leckey <i>Used with serial numbers prior to FLP010784 and serial numbers starting with FLP011080</i>	1
1a, 1b, 2, 3-6, 7a, 8, 9b, 10, 11, 13-20, 22-24	111283	Transit Back Assembly w/Latch Insert, Fixed Height with Adjustable Handle, Short with Hardware, Right, Flip for Leckey <i>Used with serial numbers prior to FLP010784 and serial numbers starting with FLP011080</i>	1
1a, 1b, 2, 3-6, 7b, 8, 9a, 10, 11, 13-20, 22-24	111284	Transit Back Assembly w/Latch Insert, Fixed Height with Adjustable Handle, Tall with Hardware, Left, Flip for Leckey <i>Used with serial numbers prior to FLP010784 and serial numbers starting with FLP011080</i>	1
1a, 1b, 2, 3-6, 7b, 8, 9b, 10, 11, 13-20, 22-24	111285	Transit Back Assembly w/Latch Insert, Fixed Height with Adjustable Handle, Tall with Hardware, Right, Flip for Leckey <i>Used with serial numbers prior to FLP010784 and serial numbers starting with FLP011080</i>	1

Item Number	Part Number	Description	Quantity
12a, 21	503107	Growth Strut Assembly Short, Focus/Flip	1
12b, 21	503108	Growth Strut Assembly Long, Flip/Focus <i>Used only if growing chair from 13" wide or less to 14" wide or greater</i>	1
3, 6	503834	Cover Plate, Latch Insert Kit	2
1a	001071	Back Plate Std TILT <i>Use Quantity 2 per side if transit is not present. Use Quantity 1 per side if Transit is present</i>	2
1b	111269	Inner Back Plate Transit, Flip for Leckey <i>Use Quantity 1 per side if Transit is present</i>	1
2	001893	Latch Lever, Backrest	2
4	001895	Latch Insert, Folding Backrest	2
5	001896	Spring, Backrest Latch	2
6	001897	Washer, Dual, PSA	4
12a	002578	Growth Strut, Stroller, Short	1
12b	002579	Growth Strut, Stroller, Long <i>Used only if growing chair from 13" wide or less to 14" wide or greater</i>	1
13	002513	Threaded Barrel, 5mm OD x M4	2
14	002738	Spacer .313 OD x .243 ID x 1.68 long	2
15	002594	Saddle, Dual, 1" OD X 1.75 SP	4
16	102694	Dowel Pin, M5 X 24, Blk Zn	2
19	101781	M6 x 50mm Partial Thread BHCS Blk ZC	8
20	100797	M6 x 40 BHCS BLK ZC	2
21	101843	M5 x 20 SHCS Blk Zn	2
22	101818	M4 x 10 FHCS BLKZC w/Patch	4
23	100658	M6 Nylock Nut Blk Zn	10
24	101861	Nylon Washer 5/16 x 1/2 x .03	2
25	110524	Locking Hinge Button Assembly with Instruction <i>This kit contains the contents inside callout # 10. This assembly may not be compatible if chair was invoiced prior to 6/22/16</i>	1