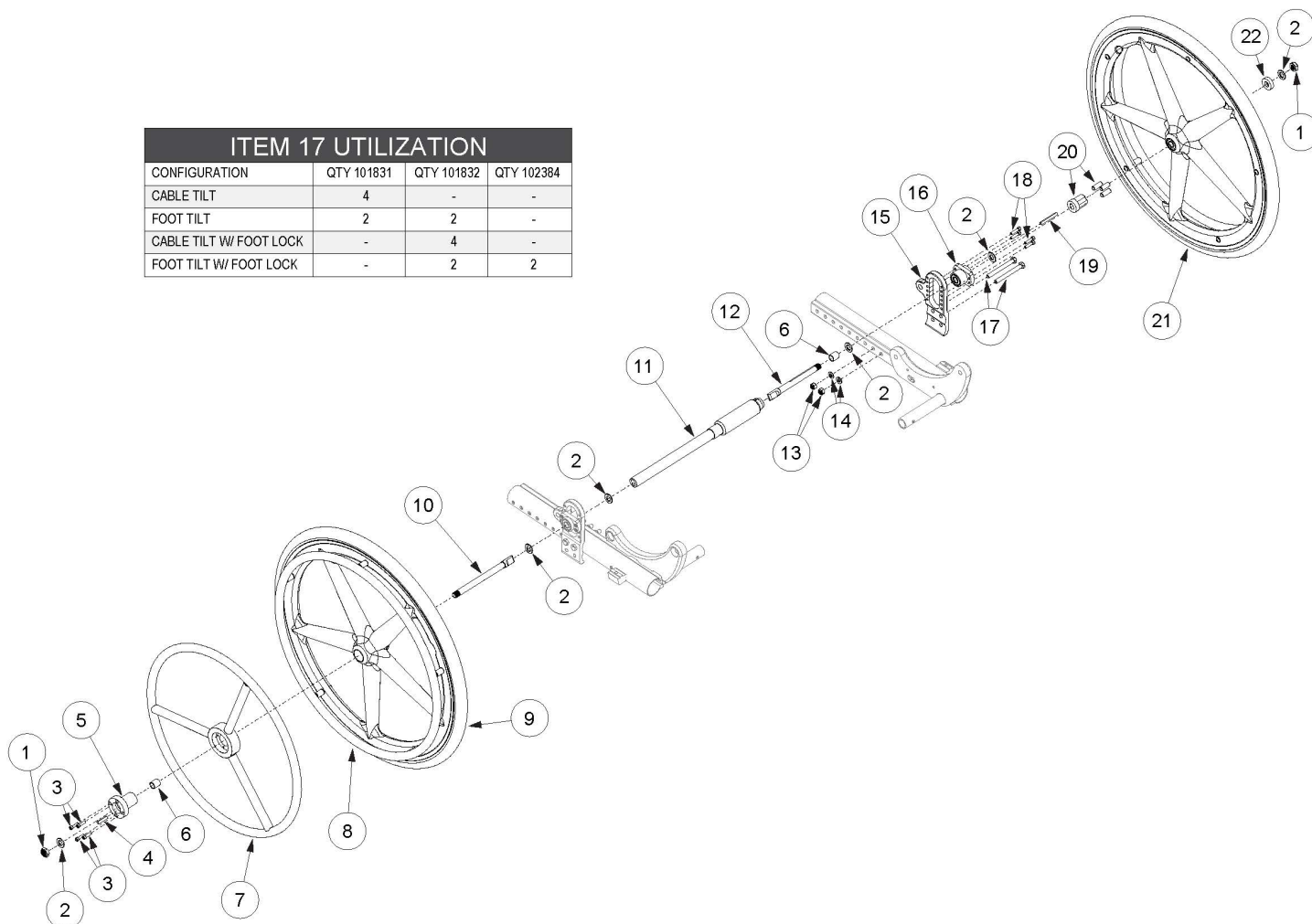


(Discontinued) Focus CR One Arm Drive Blade Style

ITEM 17 UTILIZATION			
CONFIGURATION	QTY 101831	QTY 101832	QTY 102384
CABLE TILT	4	-	-
FOOT TILT	2	2	-
CABLE TILT W/ FOOT LOCK	-	4	-
FOOT TILT W/ FOOT LOCK	-	2	2



One Arm Drive Kits do not include rear tires <p>

If retrofitting from Hex One Arm Drive, you will need a new drive shaft, axles (#10 and #12), One Arm Drive Spacer (#6) and installation instruction DCN0505.

Item Number	Part Number	Description	Quantity	Retail
1-6, 7a, 8a, 9a, 10, 11a, 12 - 19, 20a, 21a, 22	109441	Focus Blade One Arm Drive Retrofit Kit, 20" Mag with Aluminum Drive Handrim, 11.72" Drive Shaft <i>Used on 14" seat width</i>	1	\$1,990.89
1-6, 7a, 8a, 9a, 10, 11b, 12 - 19, 20a, 21a, 22	109442	Focus Blade One Arm Drive Retrofit Kit, 20" Mag with Aluminum Drive Handrim, 12.72" Drive Shaft <i>Used on 15" seat width</i>	1	\$1,990.89
1-6, 7a, 8a, 9a, 10, 11c, 12 - 19, 20a, 21a, 22	109443	Focus Blade One Arm Drive Retrofit Kit, 20" Mag with Aluminum Drive Handrim, 13.82" Drive Shaft <i>Used on 16" seat width</i>	1	\$1,990.89

Item Number	Part Number	Description	Quantity	Retail
1-6, 7a, 8a, 9a, 10, 11d, 12 - 19, 20a, 21a, 22	109444	Focus Blade One Arm Drive Retrofit Kit, 20" Mag with Aluminum Drive Handrim, 14.67" Drive Shaft <i>Used on 17" seat width</i>	1	\$1,990.89
1-6, 7a, 8a, 9a, 10, 11f, 12 - 19, 20a, 21a, 22	109446	Focus Blade One Arm Drive Retrofit Kit, 20" Mag with Aluminum Drive Handrim, 16.67" Drive Shaft <i>Used on 19" seat width</i>	1	\$1,990.89
1-6, 7a, 8a, 9a, 10, 11g, 12 - 19, 20a, 21a, 22	109447	Focus Blade One Arm Drive Retrofit Kit, 20" Mag with Aluminum Drive Handrim, 17.67" Drive Shaft <i>Used on 20" seat width</i>	1	\$1,990.89
1-6, 7a, 8a, 9a, 10, 11h, 12 - 19, 20a, 21a, 22	109448	Focus Blade One Arm Drive Retrofit Kit, 20" Mag with Aluminum Drive Handrim, 18.67" Drive Shaft <i>Used on 21" seat width</i>	1	\$1,990.89
1-6, 7a, 8a, 9a, 10, 11i, 12 - 19, 20a, 21a, 22	109449	Focus Blade One Arm Drive Retrofit Kit, 20" Mag with Aluminum Drive Handrim, 19.67" Drive Shaft <i>Used on 22" seat width</i>	1	\$1,990.89
1-6, 7d, 8a, 9a, 10, 11a, 12 - 19, 20a, 21a, 22	109450	Focus Blade One Arm Drive Retrofit Kit, 20" Mag with Poly Coated Drive Handrim, 11.72" Drive Shaft <i>Used on 14" seat width</i>	1	\$2,201.01
1-6, 7d, 8a, 9a, 10, 11b, 12 - 19, 20a, 21a, 22	109451	Focus Blade One Arm Drive Retrofit Kit, 20" Mag with Poly Coated Drive Handrim, 12.72" Drive Shaft <i>Used on 15" seat width</i>	1	\$2,201.01
1-6, 7d, 8a, 9a, 10, 11c, 12 - 19, 20a, 21a, 22	109452	Focus Blade One Arm Drive Retrofit Kit, 20" Mag with Poly Coated Drive Handrim, 13.82" Drive Shaft <i>Used on 16" seat width</i>	1	\$2,201.01
1-6, 7d, 8a, 9a, 10, 11d, 12 - 19, 20a, 21a, 22	109453	Focus Blade One Arm Drive Retrofit Kit, 20" Mag with Poly Coated Drive Handrim, 14.67" Drive Shaft <i>Used on 17" seat width</i>	1	\$2,201.01
1-6, 7d, 8a, 9a, 10, 11f, 12 - 19, 20a, 21a, 22	109455	Focus Blade One Arm Drive Retrofit Kit, 20" Mag with Poly Coated Drive Handrim, 16.67" Drive Shaft <i>Used on 19" seat width</i>	1	\$2,201.01
1-6, 7d, 8a, 9a, 10, 11g, 12 - 19, 20a, 21a, 22	109456	Focus Blade One Arm Drive Retrofit Kit, 20" Mag with Poly Coated Drive Handrim, 17.67" Drive Shaft <i>Used on 20" seat width</i>	1	\$2,201.01
1-6, 7d, 8a, 9a, 10, 11h, 12 - 19, 20a, 21a, 22	109457	Focus Blade One Arm Drive Retrofit Kit, 20" Mag with Poly Coated Drive Handrim, 18.67" Drive Shaft <i>Used on 21" seat width</i>	1	\$2,201.01

Item Number	Part Number	Description	Quantity	Retail
1-6, 7d, 8a, 9a, 10, 11i, 12 - 19, 20a, 21a, 22	109458	Focus Blade One Arm Drive Retrofit Kit, 20" Mag with Poly Coated Drive Handrim, 19.67" Drive Shaft <i>Used on 22" seat width</i>	1	\$2,201.01
1-6, 7b, 8b, 9b, 10, 11a, 12 - 19, 20a, 21b, 22	109459	Focus Blade One Arm Drive Retrofit Kit, 22" Mag with Aluminum Drive Handrim, 11.72" Drive Shaft <i>Used on 14" seat width</i>	1	\$1,990.89
1-6, 7b, 8b, 9b, 10, 11b, 12 - 19, 20a, 21b, 22	109460	Focus Blade One Arm Drive Retrofit Kit, 22" Mag with Aluminum Drive Handrim, 12.72" Drive Shaft <i>Used on 15" seat width</i>	1	\$1,990.89
1-6, 7b, 8b, 9b, 10, 11c, 12 - 19, 20a, 21b, 22	109461	Focus Blade One Arm Drive Retrofit Kit, 22" Mag with Aluminum Drive Handrim, 13.82" Drive Shaft <i>Used on 16" seat width</i>	1	\$1,990.89
1-6, 7b, 8b, 9b, 10, 11d, 12 - 19, 20a, 21b, 22	109462	Focus Blade One Arm Drive Retrofit Kit, 22" Mag with Aluminum Drive Handrim, 14.67" Drive Shaft <i>Used on 17" seat width</i>	1	\$1,990.89
1-6, 7b, 8b, 9b, 10, 11f, 12 - 19, 20a, 21b, 22	109464	Focus Blade One Arm Drive Retrofit Kit, 22" Mag with Aluminum Drive Handrim, 16.67" Drive Shaft <i>Used on 19" seat width</i>	1	\$1,990.89
1-6, 7b, 8b, 9b, 10, 11g, 12 - 19, 20a, 21b, 22	109465	Focus Blade One Arm Drive Retrofit Kit, 22" Mag with Aluminum Drive Handrim, 17.67" Drive Shaft <i>Used on 20" seat width</i>	1	\$1,990.89
1-6, 7b, 8b, 9b, 10, 11h, 12 - 19, 20a, 21b, 22	109466	Focus Blade One Arm Drive Retrofit Kit, 22" Mag with Aluminum Drive Handrim, 18.67" Drive Shaft <i>Used on 21" seat width</i>	1	\$1,990.89
1-6, 7b, 8b, 9b, 10, 11i, 12 - 19, 20a, 21b, 22	109467	Focus Blade One Arm Drive Retrofit Kit, 22" Mag with Aluminum Drive Handrim, 19.67" Drive Shaft <i>Used on 22" seat width</i>	1	\$1,990.89
1-6, 7e, 8b, 9b, 10, 11a, 12 - 19, 20a, 21b, 22	109468	Focus Blade One Arm Drive Retrofit Kit, 22" Mag with Poly Coated Drive Handrim, 11.72" Drive Shaft <i>Used on 14" seat width</i>	1	\$2,201.01
1-6, 7e, 8b, 9b, 10, 11b, 12 - 19, 20a, 21b, 22	109469	Focus Blade One Arm Drive Retrofit Kit, 22" Mag with Poly Coated Drive Handrim, 12.72" Drive Shaft <i>Used on 15" seat width</i>	1	\$2,201.01
1-6, 7e, 8b, 9b, 10, 11c, 12 - 19, 20a, 21b, 22	109470	Focus Blade One Arm Drive Retrofit Kit, 22" Mag with Poly Coated Drive Handrim, 13.82" Drive Shaft <i>Used on 16" seat width</i>	1	\$2,201.01

Item Number	Part Number	Description	Quantity	Retail
1-6, 7e, 8b, 9b, 10, 11d, 12 - 19, 20a, 21b, 22	109471	Focus Blade One Arm Drive Retrofit Kit, 22" Mag with Poly Coated Drive Handrim, 14.67" Drive Shaft <i>Used on 17" seat width</i>	1	\$2,201.01
1-6, 7e, 8b, 9b, 10, 11f, 12 - 19, 20a, 21b, 22	109473	Focus Blade One Arm Drive Retrofit Kit, 22" Mag with Poly Coated Drive Handrim, 16.67" Drive Shaft <i>Used on 19" seat width</i>	1	\$2,201.01
1-6, 7e, 8b, 9b, 10, 11g, 12 - 19, 20a, 21b, 22	109474	Focus Blade One Arm Drive Retrofit Kit, 22" Mag with Poly Coated Drive Handrim, 17.67" Drive Shaft <i>Used on 20" seat width</i>	1	\$2,201.01
1-6, 7e, 8b, 9b, 10, 11h, 12 - 19, 20a, 21b, 22	109475	Focus Blade One Arm Drive Retrofit Kit, 22" Mag with Poly Coated Drive Handrim, 18.67" Drive Shaft <i>Used on 21" seat width</i>	1	\$2,201.01
1-6, 7e, 8b, 9b, 10, 11i, 12 - 19, 20a, 21b, 22	109476	Focus Blade One Arm Drive Retrofit Kit, 22" Mag with Poly Coated Drive Handrim, 19.67" Drive Shaft <i>Used on 22" seat width</i>	1	\$2,201.01
	DCN0505	Instruction - Focus Blade One Arm Drive Retrofit Installation	1	
1-6, 10, 12, 19	108075	Blade One Arm Drive Axle Assembly	1	\$637.50
15a, 15b, 16	003212	One Arm Drive Focus Axle Plate Assembly PAIR	1	\$579.36
1	101459	1/2-20 NTE JAM NYL INS L/N BLK ZC	2	\$1.58
2	108082	1/2" Washer .030 Thick	6	\$1.02
3	104056	10-32 X 3/4" Socket Head Cap Screw	4	\$1.02
5	108083	Hub Handrim, One Arm Drive	1	\$81.46
6	107564	One Arm Drive Spacer	2	\$21.21
7a	003200	One Arm Drive Handrim Aluminum 20"	1	\$262.65
7b	003199	One Arm Drive Handrim Aluminum 22"	1	\$262.65
7c	003198	One Arm Drive Handrim Aluminum 24"	1	\$262.65
7d	003203	One Arm Drive Handrim Poly Coated 20"	1	\$414.99
7e	003202	One Arm Drive Handrim Poly Coated 22"	1	\$414.99
7f	003201	One Arm Drive Handrim Poly Coated 24"	1	\$414.99
8a	101897	Handrim Aluminum Anodized 5 Rivet Nut 20" <i>Does not include attaching hardware. Quote 502171 if hardware is needed.</i>	1	\$68.29

Item Number	Part Number	Description	Quantity	Retail
8b	101898	Handrim Aluminum Anodized 5 Rivet Nut 22" <i>Does not include attaching hardware. Quote 502171 if hardware is needed</i>	1	\$68.29
8c	100975	Handrim Aluminum Anodized 5 Rivet Nut 24" <i>Does not include attaching hardware. Quote 502171 if hardware is needed</i>	1	\$57.78
9a	101961	Wheel X Core Mag 5-Spoke 20" Black	1	\$147.08
9b	101962	Wheel X Core Mag 5-Spoke 22" Black	1	\$141.83
9c	100960	Wheel X Core Mag 5-Spoke 24" Black	1	\$136.58
11a	107565	One Arm Drive - Blade Drive Shaft 11.72"	1	\$562.82
11b	107566	One Arm Drive - Blade Drive Shaft 12.72"	1	\$562.82
11c	107567	One Arm Drive - Blade Drive Shaft 13.82"	1	\$562.82
11d	107568	One Arm Drive - Blade Drive Shaft 14.67"	1	\$562.82
11f	107570	One Arm Drive - Blade Drive Shaft 16.67"	1	\$562.82
11g	107571	One Arm Drive - Blade Drive Shaft 17.67"	1	\$562.82
11h	107572	One Arm Drive - Blade Drive Shaft 18.67"	1	\$562.82
11i	108072	One Arm Drive - Blade Drive Shaft 19.67"	1	\$562.82
12	107574	One Arm Drive - Blade Style Axle 5.03"	1	\$92.09
13	100659	M8 Nylock Nut Blk Zn	4	\$1.05
14	101858	Washer Flat M8 Blk Zn	4	\$0.53
17a	101831	M8 x 80 HHCS Blk Zn	4	\$3.07
17b	101832	M8 x 90 HHCS Blk Zn	4	\$3.68
17c	102384	M8 x 100 HHCS Blk Zc Part THD	2	\$3.68
18	101843	M5 x 20 SHCS Blk Zn	8	\$0.53
19	108085	Key, Blade One Arm Drive, 3/16" x 2"	1	\$16.29
20a, 21a, 22	505175	20" X Core Mag with One Arm Drive Hub	1	\$254.68
20a, 21b, 22	505176	22" X Core Mag with One Arm Drive Hub	1	\$254.68
20b, 21c, 22	003238	24" X Core Mag with One Arm Drive Hub	1	\$254.68

Focus Blade OAD Drive Shaft Configurations Guide

Focus Seat Width	Part No.	Compressed Drive Shaft Length	Extended Drive Shaft Length
14"	107565	10.12"	11.72"
15"	107566	11.12"	12.72"
16"	107567	12.22"	13.82"
17"	107568	13.07"	14.67"
18"	107569	14.07"	15.67"
19"	107570	15.07"	16.67"
20"	107571	16.07"	17.67"
21"	107572	17.07"	18.67"
22"	108072	18.07"	19.67"