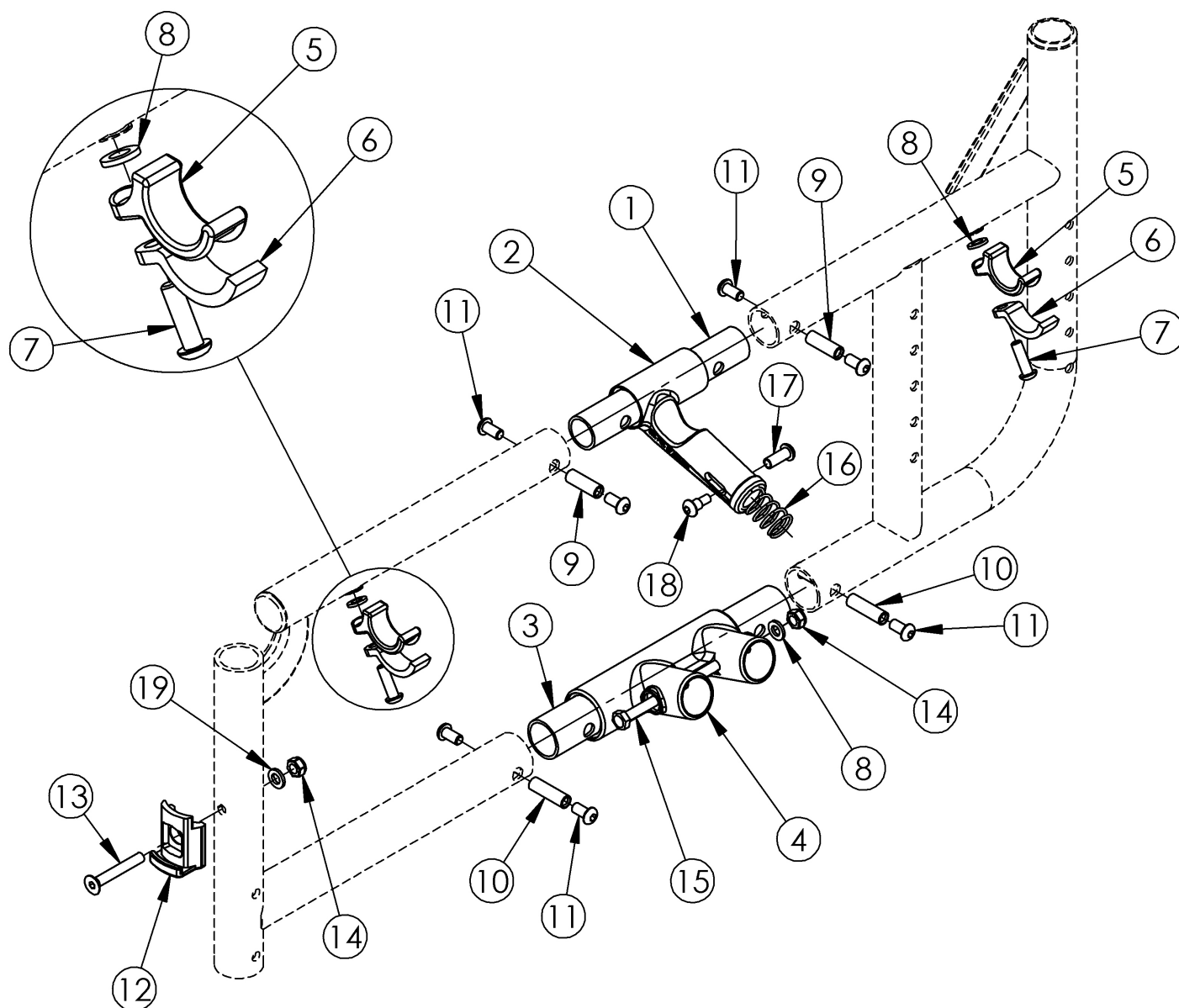


Catalyst Side Frame Assembly



Upper Pivot Assemblies are based on seat width

Item Number	Part Number	Description	Quantity	Retail
2a, 16 - 18	500024	Upper Pivot Assembly 14" Width <i>This kit also contains the 14" slider link (not pictured)</i>	1	\$44.77
2b, 16 - 18	500025	Upper Pivot Assembly 15" Width <i>This kit also contains the 15" slider link (not pictured)</i>	1	\$44.77
2b, 16 - 18	500026	Upper Pivot Assembly 16" Width <i>This kit also contains the 16" slider link (not pictured)</i>	1	\$44.77

Item Number	Part Number	Description	Quantity	Retail
2b, 16 - 18	500027	Upper Pivot Assembly 17" Width <i>This kit also contains the 17" slider link (not pictured)</i>	1	\$44.77
2b, 16 - 18	500028	Upper Pivot Assembly 18" Width <i>This kit also contains the 18" slider link (not pictured)</i>	1	\$44.77
2b, 16 - 18	500029	Upper Pivot Assembly 19" Width <i>This kit also contains the 19" slider link (not pictured)</i>	1	\$44.77
2b, 16 - 18	500030	Upper Pivot Assembly 20" Width <i>This kit also contains the 20" slider link (not pictured)</i>	1	\$44.77
2b, 16 - 18	501479	Upper Pivot Assembly 21/22" Width <i>This kit also contains the 21/22" slider link (not pictured)</i>	1	\$44.77
5, 6, 7a, 8	501005	Seat Hook and Support Hardware Kit, Standard, Catalyst <i>Used with Standard Weight Capacity. This kit contains quantity of 1 each</i>	1	\$17.40
5, 6, 7b, 8	114528	Seat Hook and Support Hardware Kit, Standard, for Heavy Duty Catalyst <i>Used with Heavy Duty / 350 lbs Weight Capacity. This kit contains quantity of 1 each</i>	1	\$17.93
1	000011	Frame Connector Upper CAT	1	\$4.58
3	000009	Frame Connector Lower CAT	1	\$4.58
4a	000001	Lower Frame Pivot CAT <i>Used when Titanium cross braces are present. Used on Catalyst 4 chairs with standard weight capacity and seat widths 14"-20" with seating system cross braces.</i>	1	\$27.71
4b	002806	Lower Frame Pivot CAT <i>Effective 4/13/16 on 21 and 22" wide chairs with standard cross braces starting with serial numbers C4017705, C4HD002593, C5030818, C5HD002749, C5TH003679. Effective 6/15/16 on 14-20" wide chairs with standard cross braces starting with serial numbers C4018744, C4HD002701, C5032544, C5037980, C5HD002834. Effective 6/15/16 on Catalyst 5 chairs with 14"-22" chair widths with seating system cross braces starting with serial numbers C5032544, C5037980, C5HD002834. Effective 6/15/16 on Catalyst 4 chairs with heavy duty option or 21"-22" chair widths with seating system cross braces starting with serial numbers C4018744, C4HD002701.</i>	1	\$10.51
	502177	Lower Frame Pivot and Catalyst Oval-Style Cross Brace Hardware Kit (Pair) <i>Used with oval-style cross braces. See Catalyst Aluminum Cross Braces page or Open Seating (Seating System) Cross Braces page for all parts in this kit.</i>	1	\$44.97
5	000003	Seat Hook, Catalyst	2	\$7.70
6	000004	Seat Hook Support, Catalyst	2	\$6.55
7a	100668	M6 x 20 CLS10.9 BTN SHCS ZC w/Patch <i>Used with Standard Weight Capacity</i>	2	\$1.58
7b	101180	M6 x 20 SHCS BLK ZC	1	\$2.10

Item Number	Part Number	Description	Quantity	Retail
		<i>Used with Heavy Duty / 350 lbs Weight Capacity</i>		
8	100831	1/2" Washer OD .040" Thick	3	\$1.58
9	000065	M6 x 23.68 Threaded Barrel	2	\$4.13
10	000066	M6 x 27 Threaded Barrel	2	\$4.46
11	100667	M6 x 12 BTN SHCS BLKZC w/Patch	8	\$1.58
12	000336	Latch Block	1	\$37.52
13	101819	M6 x 40 FHCS Blk Zn	1	\$1.05
14	100658	M6 Nylock Nut Blk Zn	2	\$1.05
15	100704	M6 x 90 CLS8.8 DIN931 HHCS ZC	1	\$1.58
19	100746	M6 Flat Washer Blk Zn	1	\$1.58