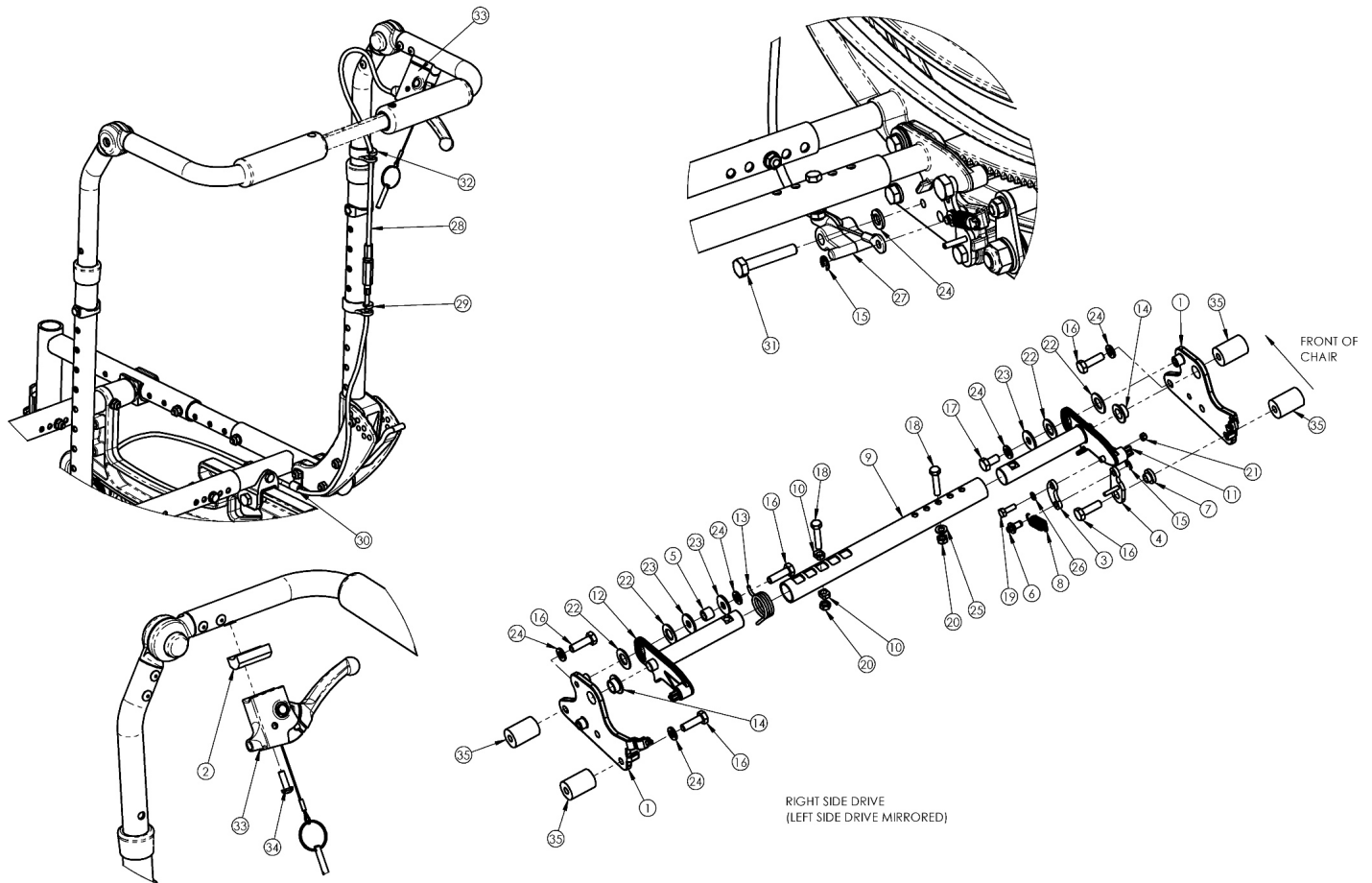


(Discontinued 1) Focus CR Dual Hand Tilt Mechanism Height Adjustable Back



This Focus CR Hand Tilt is discontinued and was used on chairs with serial numbers prior to FCR0025162 and FCHD002316.

| Item Number | Part Number | Description | Quantity | Retail |
|-------------------------|-------------|--|----------|----------|
| 2, 12, 13, 28a, 29 - 31 | 503770 | Dual Hand Tilt / Trigger Kit for Short Height Adjustable Back, Focus <i>This kit is for a pair of hand tilts/triggers</i> | 1 | \$322.20 |
| 2, 12, 13, 28b, 29 - 31 | 503771 | Dual Hand Tilt / Trigger Kit for Tall Height Adjustable Back, Focus <i>This kit is for a pair of hand tilts/triggers</i> | 1 | \$323.11 |
| 1a, 14 | 503763 | Tilt Lock Mount Bracket w/ Bearing Kit, Right, Focus, Dual Height Adjustable | 1 | \$19.27 |
| 1b, 14 | 503764 | Tilt Lock Mount Bracket w/ Bearing Kit, Left, Focus, Dual Height Adjustable | 1 | \$19.27 |
| 2 | 001239 | P-Clip 3/16" | 2 | \$6.30 |
| 3 | 003247 | Link, Drive, Tilt | 2 | \$12.87 |
| 4a | 002084 | Toggle, Drive, Tilt, R | 1 | \$11.28 |

| Item Number | Part Number | Description | Quantity | Retail |
|-------------|-------------|---|----------|----------|
| 4b | 002085 | Toggle, Drive, Tilt, L | 1 | \$20.45 |
| 5 | 101824 | M6 x 30 HHCS Blk Zn | 2 | \$2.10 |
| 6 | 003364 | Pin, Toggle, Tilt | 2 | \$7.25 |
| 9a | 002094 | Growth Strut, Tilt Lock, Small | 1 | \$33.62 |
| 9b | 002095 | Growth Strut, Tilt Lock, Med | 1 | \$35.72 |
| 9c | 002096 | Growth Strut, Tilt Lock, Large | 1 | \$37.82 |
| 10 | 102803 | Washer Flat .250 x .500 x .027 HX BLZ | 2 | \$1.58 |
| 11a | 002411 | Cog Lever, Tilt Lock, R | 1 | \$38.59 |
| 11b | 002412 | Cog Lever, Tilt Lock, L | 1 | \$38.59 |
| 12 | 002801 | Lever Assembly Horizontal Tilt | 2 | \$13.52 |
| 13 | 100696 | M5 x 30mm PPH Capscrew | 2 | \$1.58 |
| 16a | 101823 | M6 x 20 HHCS Blk Zn | 4 | \$1.05 |
| 16b | 100674 | M6 x 45 CLS10.9 DIN931 HHCS ZC <i>Used with Heavy Duty option/spacer</i> | 2 | \$1.58 |
| 16c | 101826 | M6 x 50 HHCS Blk Zn <i>Used with Heavy Duty option/spacer</i> | 2 | \$2.10 |
| 17 | 101822 | M6 x 12 HHCS BLKZC w/Patch | 2 | \$1.05 |
| 18 | 101821 | M5 x 25 HHCS Blk Zn | 1 | \$1.05 |
| 19 | 102783 | M3 x 12 HHCS, CL8.8, Blk Zn | 2 | \$1.05 |
| 20 | 100657 | M5 Nylock Nut Blk Zn | 1 | \$0.53 |
| 21 | 102784 | Nut, Nylock, M3, Blk | 2 | \$1.05 |
| 22 | 102082 | Washer Nylon .406IDX.75ODX.040 | 4 | \$0.56 |
| 23 | 101853 | M6 Washer Blk Zn | 2 | \$0.53 |
| 24 | 101835 | M6 Lock Washer Blk Zn | 5 | \$0.53 |
| 25 | 101856 | Flat Washer, M5, Blk Zn | 1 | \$0.53 |
| 26 | 102785 | Flat Washer, M3, Blk Zn | 2 | \$0.53 |
| 27 | 003387 | Cable Mount, Tilt | 2 | \$3.68 |
| 28a | 002102 | Cable, Tilt, Long <i>Used with short backcanes. Also used with tall backcanes with back heights of 20" - 22"</i> | 2 | \$110.35 |

| Item Number | Part Number | Description | Quantity | Retail |
|-------------|-------------|---|----------|----------|
| 28b | 002103 | Cable, Tilt, XL <i>Used with tall backcanes with back heights of 23" - 27"</i> | 2 | \$110.80 |
| 29 | 001117 | Cable Clip 1" | 2 | \$3.83 |
| 30 | 001118 | Cable Clip 7/8" | 2 | \$3.83 |
| 31 | 003367 | Spacer, Tilt Lever | 2 | \$18.85 |
| 32 | 001405 | Spacer, .69OD x .24ID x .1.01Lg <i>Only used with Heavy Duty Option</i> | 4 | \$26.05 |