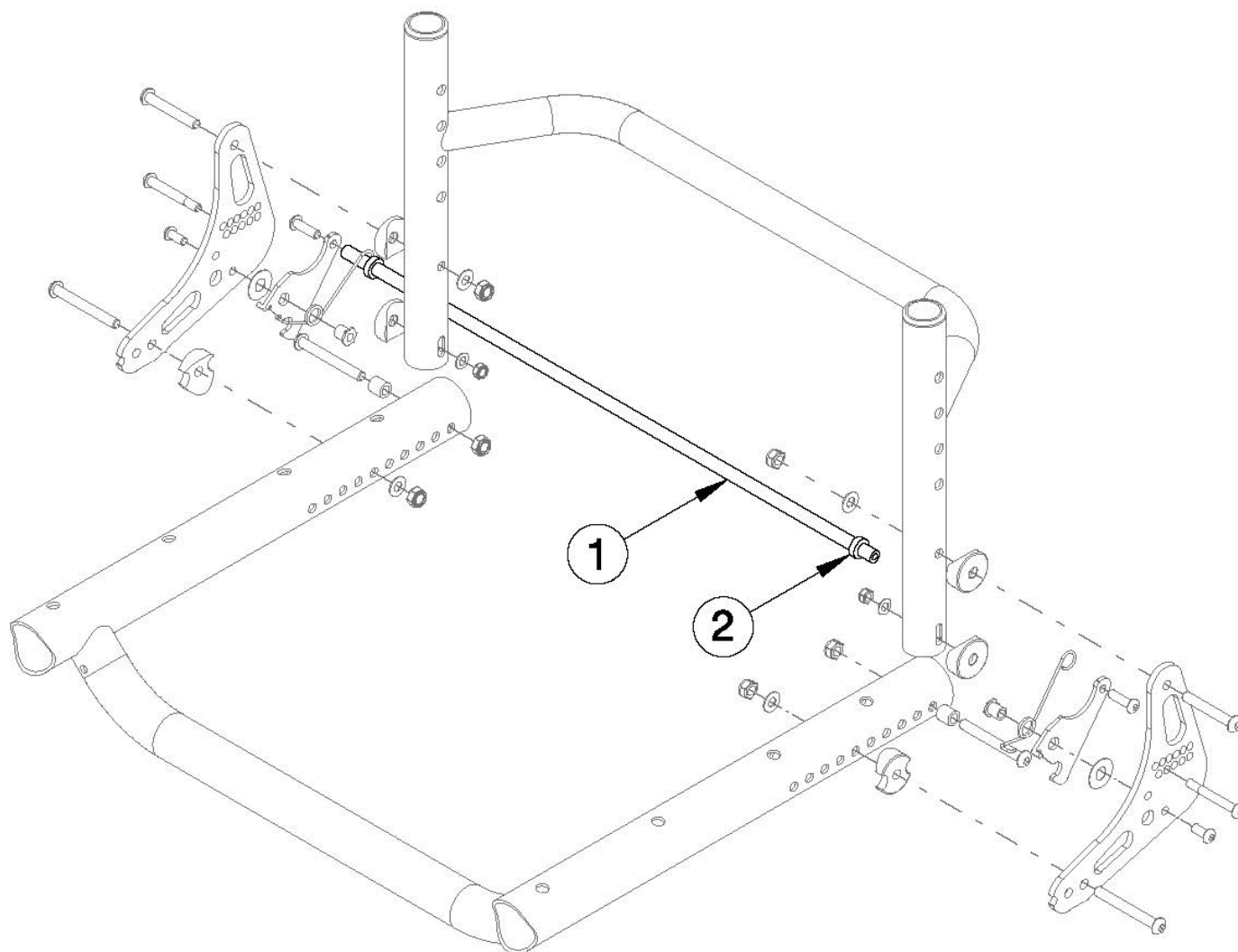


(Discontinued) Rogue ALX Backrest Mount and Hardware - Growth (Formerly Tsunami)



Utilize this page if chair has Locking Fold Down Back (Rogue10 Style). Backrest Release Bar based on seat width. This Tsunami Backrest Mount and Hardware is only used with the Tsunami Style Backrest.

| Item Number | Part Number | Description | Quantity |
|-------------|-------------|---|----------|
| 1a, 2 | 503347 | Backrest Release Bar with Retainers 14" | 1 |
| 1b, 2 | 503348 | Backrest Release Bar with Retainers 15" | 1 |
| 1c, 2 | 503349 | Backrest Release Bar with Retainers 16" | 1 |
| 1d, 2 | 503350 | Backrest Release Bar with Retainers 17" | 1 |
| 1e, 2 | 503351 | Backrest Release Bar with Retainers 18" | 1 |

| Item Number | Part Number | Description | Quantity |
|-------------|-------------|---|----------|
| 1f, 2 | 503352 | Backrest Release Bar with Retainers 19" | 1 |
| 1g, 2 | 503353 | Backrest Release Bar with Retainers 20" | 1 |
| 1h, 2 | 503354 | Backrest Release Bar with Retainers 21" | 1 |
| 1i, 2 | 503355 | Backrest Release Bar with Retainers 22" | 1 |