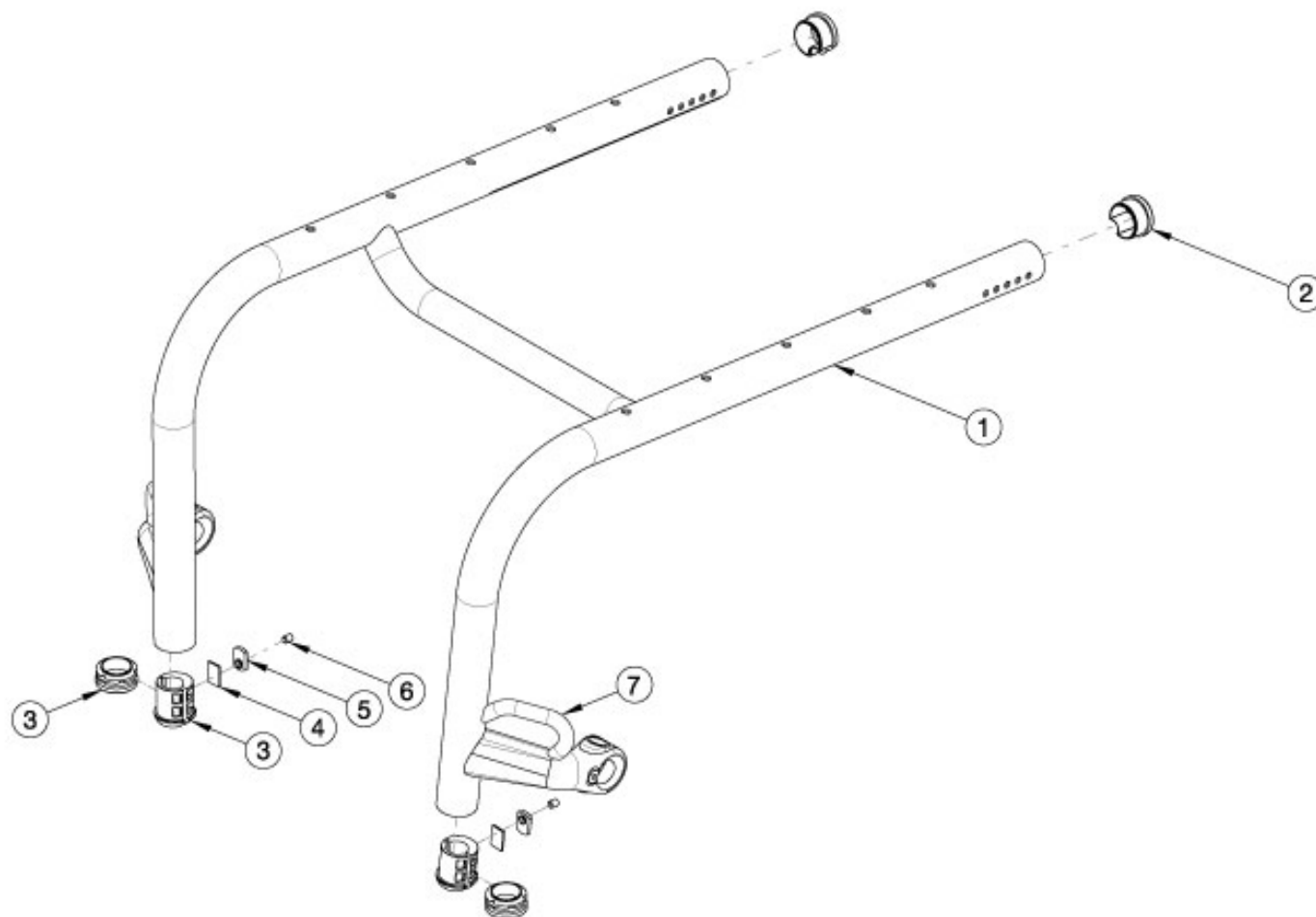


# Rogue2 Rigid Frame



Replacement Rogue2 rigid frames are to be quoted through the "Rogue2 Replacement Frame" configurator. Orders should be processed through customer service. A serial number is required. If quoting a Frame for Australia or New Zealand, 122921 is required when transit is not present.

Item Number	Part Number	Description	Quantity
3a-6	117464	Footrest Plug Kit, Rogue2 <i>Used only with frame mounted footrests. Use item 3b for high mounted footrests.</i>	2
2	114196	Rogue End Cap Dimpled	2
3a	113193	Footrest Sleeve 3/4" to 1-3/8" <i>Used only with frame mounted footrests. Use item 3b for high mounted footrests.</i>	2
3b	101113	Tube End Plug 1 3/8" <i>Used when high mounted footrests are present.</i>	2
4	113194	Footplate Plug Backing Plate	2

Item Number	Part Number	Description	Quantity
		<i>Used only with frame mounted footrests. Use item 3b for high mounted footrests.</i>	
5	102092	M6 Weld Nut Offset <i>Used only with frame mounted footrests. Use item 3b for high mounted footrests.</i>	2
6	102090	M6 Set Screw Flat Point <i>Used only with frame mounted footrests. Use item 3b for high mounted footrests.</i>	2
	122921	Not AS/NZS 3696.19 Compliant On-Chair Label with Instruction	1