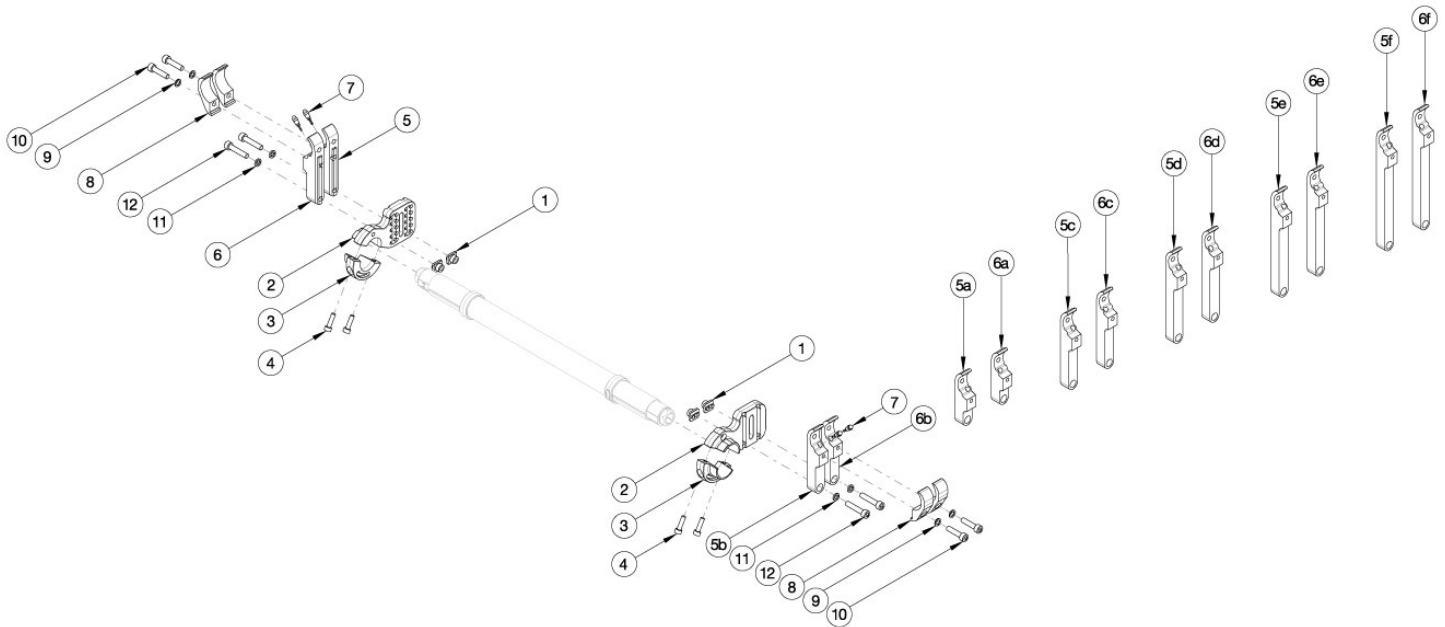


Rogue2 Amputee Camber Mount



Please contact Customer Service if "Rear Inner Tower Clamps" are needed. If ordering "Rear Inner Tower Clamps", detent buttons (001788) are required. Used when center of gravity is between -1.5" and 0.25". If One Arm Drive is present, refer to the corresponding One Arm Drive parts manual page for the correct towers.

Item Number	Part Number	Description	Quantity
1, 2a, 3, 4, 8a-12	117504	Rear Tower Assembly Amputee, Black, Right, Rogue2	1
1, 2a, 3, 4, 8b-12	117504_ _ _	Rear Tower Assembly Amputee, Anodized/Color Accent, Right, Rogue2	1
1, 2b, 3, 4, 8a-12	117505	Rear Tower Assembly Amputee, Black, Left, Rogue2 <i>Part 114021/114020 contained in 117505</i>	1
1, 2b, 3, 4, 8b-12	117505_ _ _	Rear Tower Assembly Amputee, Anodized/Color Accent, Left, Rogue2 <i>Part 114021/114020 contained in 117505</i>	1
1, 2a, 2b, 3, 4, 8a-12	117506	Rear Tower Assembly Amputee, Black, Pair, Rogue2 <i>Part 114019/114020 is contained in 117506</i>	1
1, 2a, 2b, 3, 4, 8b-12	117506_ _ _	Rear Tower Assembly Amputee, Anodized/Color Accent, Pair, Rogue2 <i>Part 114019/114020 is contained in 117506</i>	1
1	114014	Rear Tower Square Nut	2
5a	114004	Rear Tower Inner Index Clamp 2.125", Black, Right	2
5a	114004_ _ _	Rear Tower Inner Index Clamp 2.125", Anodized/Color Accent, Right	2
5b	114005	Rear Tower Inner Index Clamp 2.875", Black, Right	2
5b	114005_ _ _	Rear Tower Inner Index Clamp 2.875", Anodized/Color Accent, Right	2

Item Number	Part Number	Description	Quantity
5c	114006	Rear Tower Inner Index Clamp 3.625, Black, Right	2
5c	114006_ _ _	Rear Tower Inner Index Clamp 3.625, Anodized/Color Accent, Right	2
5d	114007	Rear Tower Inner Index Clamp 4.500", Black, Right	2
5d	114007_ _ _	Rear Tower Inner Index Clamp 4.500", Anodized/Color Accent, Right	2
5e	114008	Rear Tower Inner Index Clamp 5.375", Black, Right	2
5e	114008_ _ _	Rear Tower Inner Index Clamp 5.375", Anodized/Color Accent, Right	2
5f	114009	Rear Tower Inner Index Clamp 6.250", Black, Right	2
5f	114009_ _ _	Rear Tower Inner Index Clamp 6.250", Anodized/Color Accent, Right	2
6a	114034	Rear Tower Inner Index Clamp 2.125", Black, Left	2
6a	114034_ _ _	Rear Tower Inner Index Clamp 2.125", Anodized/Color Accent, Left	2
6b	114035	Rear Tower Inner Index Clamp 2.875", Black, Left	2
6b	114035_ _ _	Rear Tower Inner Index Clamp 2.875", Anodized/Color Accent, Left	2
6c	114036	Rear Tower Inner Index Clamp 3.625, Black, Left	2
6c	114036_ _ _	Rear Tower Inner Index Clamp 3.625, Anodized/Color Accent, Left	2
6d	114037	Rear Tower Inner Index Clamp 4.500", Black, Left	2
6d	114037_ _ _	Rear Tower Inner Index Clamp 4.500", Anodized/Color Accent, Left	2
6e	114038	Rear Tower Inner Index Clamp 5.375", Black, Left	2
6e	114038_ _ _	Rear Tower Inner Index Clamp 5.375", Anodized/Color Accent, Left	2
6f	114039	Rear Tower Inner Index Clamp 6.250", Black, Left	2
6f	114039_ _ _	Rear Tower Inner Index Clamp 6.250", Anodized/Color Accent, Left	2
7	001788	Button Assembly	2
8a	114003	Rear Tower Outer Clamp, Black	4
8b	114003_ _ _	Rear Tower Outer Clamp, Anodized//Color Accent	4
9	102326	Flat Washer ID .254" x OD .396" Thickness .047" Zinc	2
10	100780	M6 x 25 SHCS ZC	2
11	102810	M6 Lockwasher, Hi-Collar, ZC	2
12	102627	M6 X 30 SHCS BLK ZC	2