

1218

Available in
Black or White

Pediatric Shower/Commode Chair-Tilt

- Packages Now Available
- Stainless Steel Frame
- Tilt Adjustment
- Four Seat Sizes:
12"Wx12"D, 14"Wx14"D, 16"Wx16"D, 18"Wx18"D
- Single frame accepts all seat sizes
- Perfect for Youth and Small Adults

The 1218 pediatric tilt-in-space shower/commode chair was designed for years of use and with growth in mind. A single stainless steel frame and non-corrosive components can accept multiple seat width/depth combinations from 12-18" that can be easily swapped as a child grows.

The gravity assist tilt system performs infinite adjustments up to 29 degrees easily, even under load. This chair can be configured for maximum support with a system comprised of the seat, adjustable depth, and slack back, padded armrests, hip guides, lateral supports and head support.



FRAMES



P13623
18"Wx18"D Frame

full option details at
activeaid.com

CASTERS



60800-4
5" Dual Locking
Casters
(2 pair)



P13770
5" Casters (pair) and
5" Dual Locking
Casters (pair)

SEATS



P11090
12"Wx12"D
Ensolite® 1" foam
Front/Rear Open Seat
A-2.5"xB-4.5" opening



P11091
14"Wx14"D
Ensolite® 1" foam
Front/Rear Open Seat
A-3.5"xB-5.5" opening



P11092
16"Wx16"D
Ensolite® 1" foam
Front/Rear Open Seat
A-4"xB-6.5" opening



P13494
18"Wx18"D
Comfortuff 1.5" waterfall foam
Front/Rear Open Seat
A-5"xB-8" opening

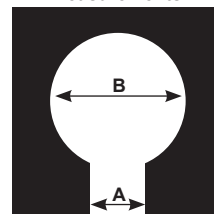


P13617
18"Wx18"D
Ensolite® 2" foam
Solid Seat

Weight Capacity for Seats

- 12"Wx12"D - 150lbs.
- 14"Wx14"D - 250lbs.
- 16"Wx16"D - 300lbs.
- 18"Wx18"D - 350lbs.

**Seat Opening
Measurements**



ARMRESTS



P13611
Left Hand Armrest
with Pad



P13612
Right Hand Armrest
with Pad



P13613
Left Hand Armrest
with Arm Trough



P13614
Right Hand Armrest
with Arm Trough



P13615
Left Hand
Height-Adjustable
Armrest



P13616
Right Hand
Height-Adjustable
Armrest

LEGRESTS



PL13610
Left Pediatric Leg
Rest



PR13610
Right Pediatric Leg
Rest



P13582
Left Elevating
Leg Rest



P13583
Right Elevating
Leg Rest



PL13581
Left Gooseneck
Leg Rest



PR13581
Right Gooseneck
Leg Rest

FOOT PLATES



PL11099
Left Foot Plate



PR11099
Right Foot Plate



PL11100
Left Foot Plate
with Heel Loop



PR11100
Right Foot Plate
with Heel Loop



P61137
Left Oversized
Aluminum Foot Plate



P61138
Right Oversized
Aluminum Foot Plate



PL11101
Left Padded
Foot Plate



PR11101
Right Padded
Foot Plate

BACKS



P61057
18"W Adjustable
Sling Back



P11107
18"W Solid Back



P11104
18"W Solid Back
Full Length w/Center Pad
(adjustable depth)

BELTS



PW60884
Waist Belt
(48" circumference with
12" velcro overlap)



PT60884
Trunk Belt
(48" circumference with
12" velcro overlap)



P11093
Bodypoint®
Trunk Belt



P11102
Bodypoint®
Trunk Belt (pair)



P11116
Bodypoint® Trunk
Belt & Waist Belt



P11113
Bodypoint® Belt
w/Quick Release
Knobs



P61081
Bodypoint® Calf
Strap



P11114
Bodypoint® Knee
Belt

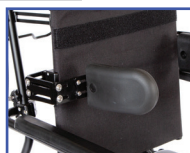


P11117
Calf Strap

POSITIONING AIDS



PL13574
Left Hand
Swing-Away
Adjustable Lateral



PR13574
Right Hand
Swing-Away
Adjustable Lateral



PL13618
Left Hand
Arm-Mounted
Hip Guide



PR13618
Right Hand
Arm-Mounted
Hip Guide



P61056
Abductor/Deflector
Small
(for 12" and 14" seats)



P60756
Abductor/Deflector
Medium
(for 16" seats)



P61006
Abductor/Deflector
Large
(for 18" seats)

PANS



P13619
Pan/Hanger-Fits
12"W and 14"W
Frame



P13620
Pan/Hanger-Fits
16"W and 18"W
Frame

HEAD SUPPORTS



P11105
Head Support
Small Foam
(only available for P11104)



P13622
Head Support
Small



P13621
Head Support
Large

full option details at
activeaid.com



1218 with Options



1218 with Options

SPECIFICATIONS

| | |
|---|---|
| Weight Capacity | 12"x12" 150 lbs., 14"x14" 250 lbs., 16"x16" 300 lbs., 18"x18" 350 lbs. |
| Tilt Range | 6-29° |
| Back Angle Adjustment | 8° Forward/8° Backward |
| Top of Seat to Top of Back | 19" |
| Floor to Top of Seat | 23.5" |
| Seat Width | 12", 14", 16", 18" |
| Seat Depth | 12", 14", 16", 18" |
| Floor to Bottom of Seat Frame (without pan) | 19.5" |
| Seat Slot Width | 12" Seat-2.5", 14" Seat-3.5", 16" Seat-4", 18"-5" |
| Center Opening Width | 12" Seat-4.5", 14" Seat-5.5", 16" Seat-6.75", 18"-8.25" |
| Back of Seat to Start of Opening | 12" Seat-2.5", 14" Seat-2.5", 16" Seat-3.5", 18"-4.5" |
| Width Between Arm Pads | 20.5" |
| Top of Seat to Top of Armrest Pads | 7.75" |
| Overall Width | 24.75" |
| Maximum Back Slack | 6" |
| Headrest Height from Seat to Bottom of Cervical Support | 20"-28" |
| Minimum Overall length with Footrest – No Tilt | 45" |
| Maximum Overall Length with Footrest – Full Tilt – Headrest in | 55" |
| Maximum Overall Length with Footrest – Full Tilt – Headrest out | 57" |
| Legrest Range | 9"-21" |
| Under Seat Width Clearance | 17.5" |