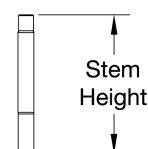
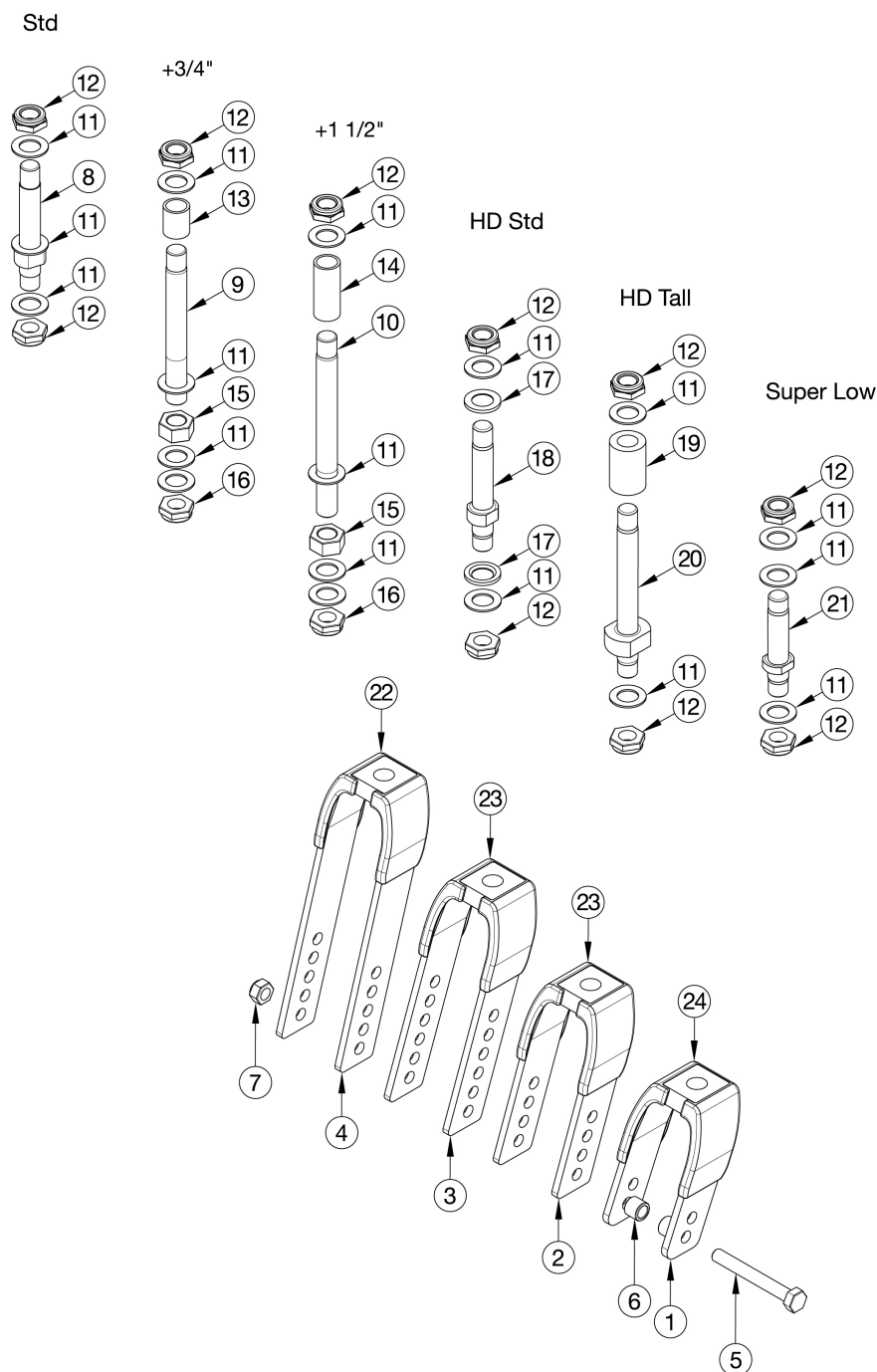
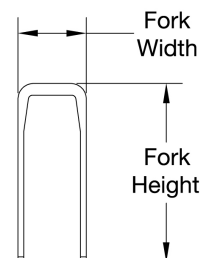


Catalyst E Transit Forks and Stems



| | |
|-----------|------|
| Std | 3.5" |
| + 3/4" | 4.4" |
| + 1 1/2" | 5.1" |
| HD Std | 4.4" |
| HD Tall | 4.8" |
| Super Low | 2.8" |



| Fork | Height | Width |
|---------|--------|-------|
| 4" Std | 3.6" | 2.2" |
| 5" Std | 4.6" | 2.2" |
| 6" Std | 5.6" | 2.2" |
| 6" Wide | 5.8" | 2.9" |
| 7" Std | 6.9" | 2.2" |
| 7" Wide | 7.0" | 2.9" |

Not available with Super Low Caster Housing

| Item Number | Part Number | Description | Quantity |
|-----------------------|-------------|-------------------------------|----------|
| 8, 11, 12 | 500866 | Std Caster Stem Assembly CAT | 1 |
| 9, 11, 12, 13, 15, 16 | 500001 | +3/4 Caster Stem Assembly CAT | 1 |

| Item Number | Part Number | Description | Quantity |
|---------------------------------|-------------|---|----------|
| 10, 11, 12, 14, 15, 16 | 500002 | +1 1/2 Caster Stem Assembly CAT | 1 |
| 11, 12, 17, 18 | 115805 | HD Std Caster Stem Assembly | 1 |
| 11, 12, 19, 20 | 115806 | HD Tall Caster Stem Assembly | 1 |
| 11, 12, 21 | 115825 | Super Low Caster Stem Assembly | 1 |
| 1a, 8, 11, 12, 24 | 123075 | Transit Fork Assembly, Black, 4" Std Stem CAT | 1 |
| 1a, 9, 11, 12, 13, 15, 16, 24 | 123076 | Transit Fork Assembly, Black, 4" +3/4" Stem CAT | 1 |
| 1a, 10, 11, 12, 14, 15, 16, 24 | 123071 | Transit Fork Assembly, Black, 4" +1 1/2" Stem CAT | 1 |
| 1a, 11, 12, 17, 18, 24 | 123055 | Transit Fork Assembly, Black, 4" HD Std Stem | 1 |
| 1a, 11, 12, 19, 20, 24 | 123056 | Transit Fork Assembly, Black, 4" HD Tall Stem | 1 |
| 2a, 8, 11, 12, 23a | 123077 | Transit Fork Assembly, Black, 5" Std Stem CAT | 1 |
| 2a, 9, 11, 12, 13, 15, 16, 23a | 123072 | Transit Fork Assembly, Black, 5" +3/4" Stem CAT | 1 |
| 2a, 10, 11, 12, 14, 15, 16, 23a | 123078 | Transit Fork Assembly, Black, 5" +1 1/2" Stem CAT | 1 |
| 2a, 11, 12, 17, 18, 23a | 123057 | Transit Fork Assembly, Black, 5" HD Std Stem | 1 |
| 2a, 11, 12, 19, 20, 23a | 123058 | Transit Fork Assembly, Black, 5" HD Tall Stem | 1 |
| 3a, 8, 11, 12, 23a | 123073 | Transit Fork Assembly, Black, 6" Std Stem CAT | 1 |
| 3a, 9, 11, 12, 13, 15, 16, 23a | 123079 | Transit Fork Assembly, Black, 6" +3/4" Stem CAT | 1 |
| 3a, 10, 11, 12, 14, 15, 16, 23a | 123080 | Transit Fork Assembly, Black, 6" +1 1/2" Stem CAT | 1 |
| 3a, 11, 12, 17, 18, 23a | 123059 | Transit Fork Assembly, Black, 6" HD Std Stem | 1 |
| 3a, 11, 12, 19, 20, 23a | 123060 | Transit Fork Assembly, Black, 6" HD Tall Stem | 1 |
| 4a, 8, 11, 12, 22a | 123074 | Transit Fork Assembly, Black, 7" Std Stem CAT | 1 |
| 4a, 9, 11, 12, 13, 15, 16, 22a | 123081 | Transit Fork Assembly, Black, 7" +3/4" Stem CAT | 1 |
| 4a, 10, 11, 12, 14, 15, 16, 22a | 123082 | Transit Fork Assembly, Black, 7" +1 1/2" Stem CAT | 1 |
| 4a, 11, 12, 17, 18, 22a | 123063 | Transit Fork Assembly, Black, 7" HD Std Stem | 1 |
| 4a, 11, 12, 19, 20, 22a | 123064 | Transit Fork Assembly, Black, 7" HD Tall Stem | 1 |
| 3b, 8, 11, 12, 23b | 123088 | Transit Fork Assembly 6" Wide Std Stem CAT <i>Only used with 2" wide casters</i> | 1 |
| 3b, 9, 11, 12, 13, 15, 16, 23b | 123090 | Transit Fork Assembly 6" Wide +3/4" Stem CAT <i>Only used with 2" wide casters</i> | 1 |

| Item Number | Part Number | Description | Quantity |
|---------------------------------|-------------|---|----------|
| 3b, 10, 11, 12, 14, 15, 16, 23b | 123091 | Transit Fork Assembly 6" Wide +1 1/2" Stem CAT <i>Only used with 2" wide casters</i> | 1 |
| 3b, 11, 12, 17, 18, 23b | 123061 | Transit Fork Assembly, Black, 6" Wide HD Std Stem <i>Only used with 2" wide casters</i> | 1 |
| 3b, 11, 12, 19, 20, 23b | 123062 | Transit Fork Assembly, Black, 6" Wide HD Tall Stem <i>Only used with 2" wide casters</i> | 1 |
| 4b, 8, 11, 12, 22b | 123089 | Transit Fork Assembly 7" Wide Std Stem CAT <i>Only used with 2" wide casters</i> | 1 |
| 4b, 9, 11, 12, 13, 15, 16, 22b | 123092 | Transit Fork Assembly 7" Wide +3/4" Stem CAT <i>Only used with 2" wide casters</i> | 1 |
| 4b, 10, 11, 12, 14, 15, 16, 22b | 123093 | Transit Fork Assembly 7" Wide +1 1/2" Stem CAT <i>Only used with 2" wide casters</i> | 1 |
| 4b, 11, 12, 17, 18, 22b | 123065 | Transit Fork Assembly, Black, 7" Wide HD Std Stem | 1 |
| 4b, 11, 12, 19, 20, 22b | 123066 | Transit Fork Assembly, Black, 7" Wide HD Tall Stem | 1 |
| 1a, 12, 16, 24 | 123101 | Transit Fork, Black, 4" Catalyst | 1 |
| 2a, 12, 16, 23a | 123102 | Transit Fork, Black, 5" Catalyst | 1 |
| 3a, 12, 16, 23a | 123103 | Transit Fork, Black, 6" Catalyst | 1 |
| 3b, 12, 16, 23b | 123104 | Transit Fork 6" Wide Catalyst <i>Only used with 2" wide casters</i> | 1 |
| 4a, 12, 16, 22a | 123105 | Transit Fork, Black, 7" Catalyst | 1 |
| 4b, 12, 16, 22b | 123106 | Transit Fork 7" Wide Catalyst <i>Only used with 2" wide casters</i> | 1 |
| 5a, 6a, 7 | 502653 | Caster Attachment Hardware Kit CAT/FCS | 1 |
| 5b, 6b, 7 | 502654 | Caster Attachment Hardware Kit for 6" and 7" Wide Fork, CAT/FCS | 1 |
| 5a | 101829 | M8 x 65 HHCS Blk Zn | 1 |
| 5b | 101831 | M8 x 80 HHCS Blk Zn <i>Only used with 2" wide casters</i> | 1 |
| 6a | 100792 | Caster Spacer D8 x D12 x 10mm / Close Mount Handrim Spacer <i>Used with all casters except 6x2 and 8x2</i> | 2 |
| 6b | 001246 | Caster Spacer Black 6 x 2 Poly .472ODX.319IDX.370LG <i>Only used with 6" x 2" casters</i> | 2 |
| 7 | 100659 | M8 Nylock Nut Blk Zn | 1 |
| 8, 12 | 503813 | Fork Stem Standard Catalyst | 1 |

| Item Number | Part Number | Description | Quantity |
|-------------|-------------|---|----------|
| 9, 16 | 503812 | Fork Stem 3/4" Catalyst | 1 |
| 10, 16 | 503811 | Fork Stem 1 1/2" Catalyst | 1 |
| 11 | 100682 | Washer 1/2" .518 x .875 x .047 F/W Black Zinc <i>Use quantity 3 with standard stem</i> | 4 |
| 12 | 100529 | M12 x 1.25mm Lock Nut Black <i>Use quantity 1 with 3/4" and 1 1/2" stems</i> | 2 |
| 13 | 000115 | Fork Stem Spacer 3/4" | 1 |
| 14 | 000114 | Fork Stem Spacer 1 1/2" CAT | 1 |
| 15 | 101869 | 1/2-20 G5 Hex Nut Hxfree Zc | 1 |
| 16 | 101459 | 1/2-20 NTE JAM NYL INS L/N BLK ZC | 1 |
| 17 | 002593 | Caster Stem Washer Heavy Duty | 1 |
| 18 | 002592 | Caster Stem Heavy Duty | 1 |
| 19 | 002476 | Spacer, 3/4" OD x 1/2" ID x 1.23 | 1 |
| 20 | 002477 | Caster Stem Tall, Adult Tilt / HD Catalyst | 1 |