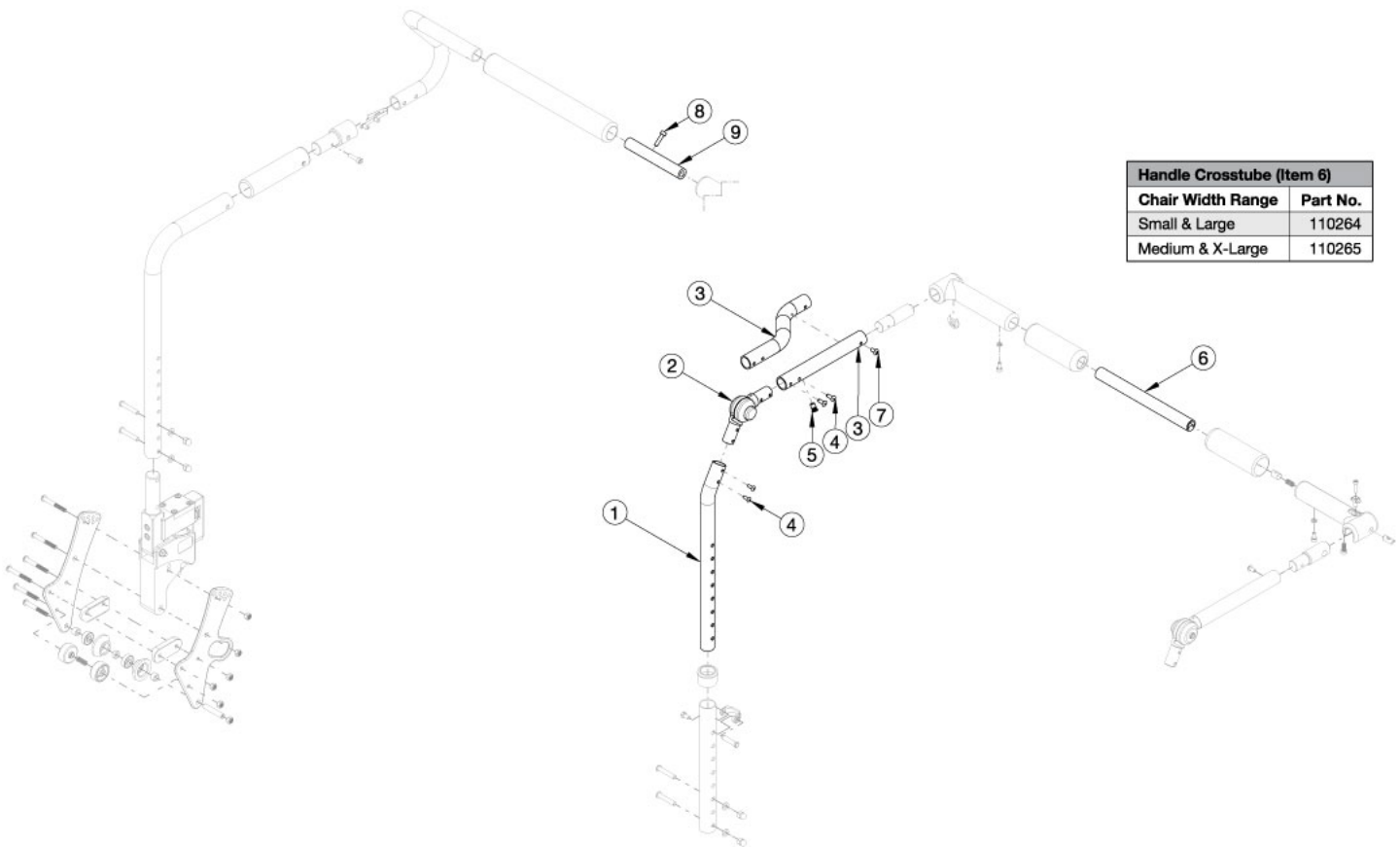


Arc Dynamic Back - Growth



Handle Crosstube (Item 6)	
Chair Width Range	Part No.
Small & Large	110264
Medium & X-Large	110265

Callout #3: 10"-13" widths receive the curved tube and 14"-18" widths receive the straight shaped tube. When changing backrest types, check to see if new cables and tilt triggers are needed for both foot and hand tilts. If chair was invoiced prior to 12/18/23 and if a Height Adjustable Backrest is present, an upper back tube assembly is required. If chair was invoiced after to 12/18/23 and if a Height Adjustable Backrest is present, upper back tube assembly can now be purchased individually

Item Number	Part Number	Description	Quantity
1a, 2, 3a, 4, 5, 7	113884	Height Adjustable Back Tube Assembly, Upper, Dynamic Back, 10-13" Wide, Right, Arc	1
1b, 2, 3b, 4, 5, 7	113885	Height Adjustable Back Tube Assembly, Upper, Dynamic Back, 10-13" Wide, Left, Arc	1
1a, 2, 3c, 4, 5, 7	113886	Height Adjustable Back Tube Assembly, Upper, Dynamic Back, 14-18" Wide, Right, Arc	1
1b, 2, 3d, 4, 5, 7	113887	Height Adjustable Back Tube Assembly, Upper, Dynamic Back, 14-18" Wide, Left, Arc	1
8, 9a	113922	Stroller Handle Backrest Growth Strut, 10-12" Wide, Arc	1
8, 9b	113923	Stroller Handle Backrest Growth Strut, 11-13" Wide, Arc	1
8, 9c	113924	Stroller Handle Backrest Growth Strut, 14-18" Wide, Arc	1
6a	110264	Cross Tube, Rigidizer Handle, 14-16 Wide	1
6b	110265	Cross Tube, Rigidizer Handle, 16-18 Wide	1