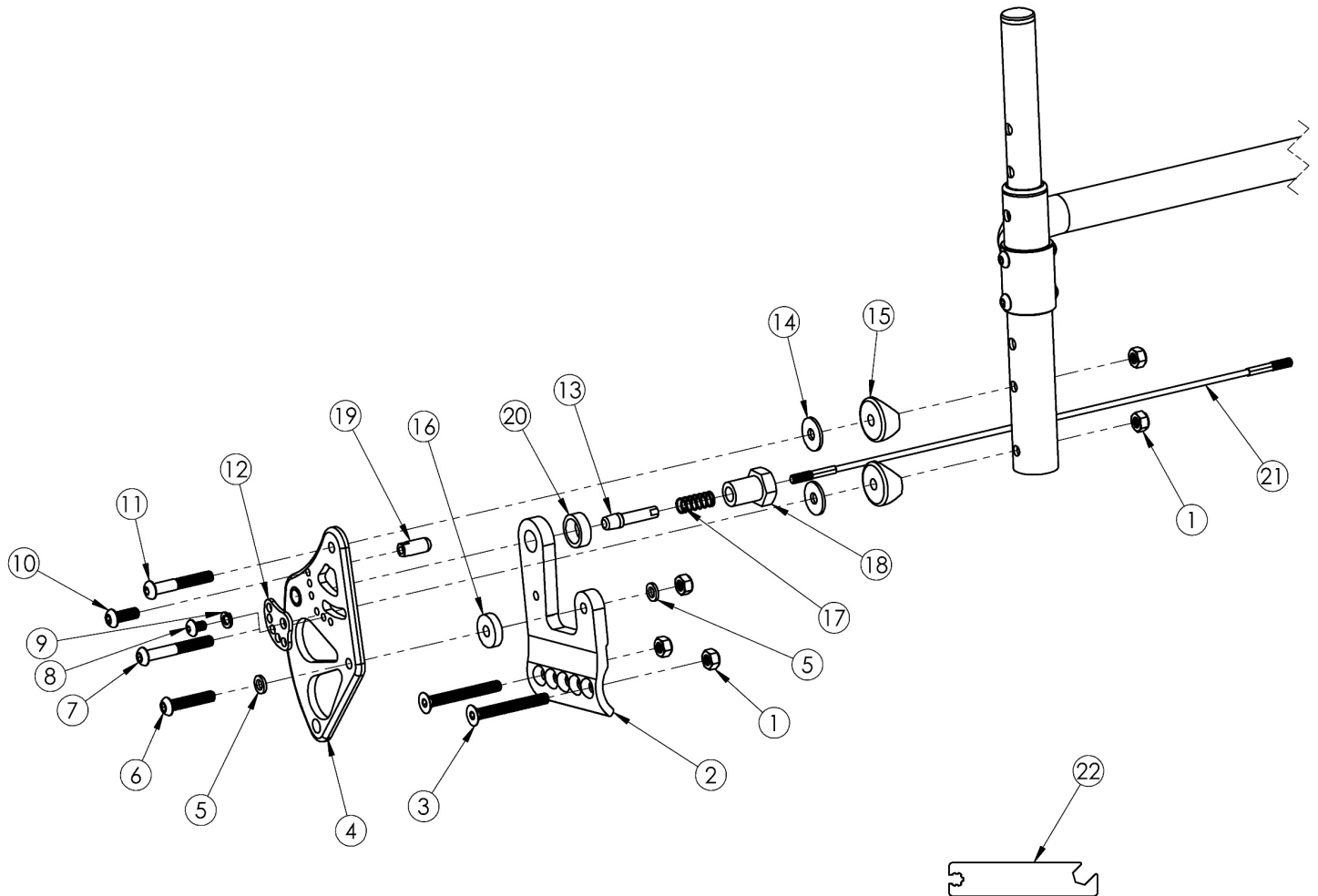


Rogue XP Standard Backrest Mount



Back Release Cable based on Seat Width. The Back Release Cable length measures 1" less than the Seat Width. If retrofitting or changing backrest mount style, a new rigidizer bar may be needed

Item Number	Part Number	Description	Quantity
1, 2a, 3a - 3c, 4a, 5-20	502181	Standard Backrest Mount Assembly, Right, Black, Rogue XP	1
1, 2a, 3a - 3c, 4b, 5-20	502181_---	Standard Backrest Mount Assembly, Right, Color Anodized/Color Accent, Rogue XP	1
1, 2b, 3a - 3c, 4c, 5-20	502182	Standard Backrest Mount Assembly, Left, Black, Rogue XP	1
1, 2b, 3a - 3c, 4d, 5-20	502182_---	Standard Backrest Mount Assembly, Left, Color Anodized/Color Accent, Rogue XP	1
1, 2a, 2b, 3a - 3c, 4a, 4c, 5-20	502183	Standard Backrest Mount Assembly, PAIR, Black, Rogue XP	1
1, 2a, 2b, 3a - 3c, 4b, 4d, 5-20	502183_---	Standard Backrest Mount Assembly, PAIR, Color Anodized/Color Accent, Rogue XP	1
1	100658	M6 Nylock Nut Blk Zn	5

Item Number	Part Number	Description	Quantity
2a	003098	XP Back Mount Right Rogue	1
2b	003099	XP Back Mount Left Rogue	1
3a	101129	M6 x 50 FSHCS P/THD BLKZC <i>Used when transit is not present</i>	2
3b	103068	M6 x 60mm FHCS Blk Zn <i>Use quantity 2 per side when transit is present</i>	2
3c	101130	M6 x 55 FSHCS P/THD BLKZC <i>Use quantity 1 per side if transit is present (not shown in image)</i>	1
4a	003229	Back Bracket Relaxed Assembly Right, Black Anodized	1
4b	002770_ _ _	Back Bracket Relaxed Right Color Anodized/Color Accent	1
4c	003231	Back Bracket Relaxed Assembly Left, Black Anodized	1
4d	002771_ _ _	Back Bracket Relaxed Left Color Anodized/Color Accent	1
5	102072	Washer Nylon .234 ID x .406 OD x .062 Thick	2
6	102625	M6 X 30 BHCS BLK ZC	1
7	100670	M6 x 45 BTN SHCS BLK ZC	1
8	102621	M5 x 8 BHCS BLK ZC	1
9	102614	M5 Split Lock Washer BLK ZC	1
10	101716	M5 x 16 SHCS Blk Zn	1
11	100797	M6 x 40 BHCS BLK ZC	1
12	001762	Arc Adjustment Cam	1
13	119660	Lockout Pin	1
14	102629	Seastrom 5610-69-062 Washer Nylon Black	2
15	000055	Saddle 1"	2
16	102630	Washer Nylon 25 X 75 X .187 Black	1
17	000965	Backrest Cable Release Spring RG	1
18	001768	Pin Receiver with Hex	1
19	000922	Backrest Stop RG	1
20	001770	Spacer For Pin Receiver <i>This spacer is not used if Swing Away Armrests are present</i>	1

Item Number	Part Number	Description	Quantity
21a, 13	121181	Back Release Cable 10" Wide Black with Lock Out Pins	1
21b, 13	121182	Back Release Cable, 11" Wide, Black with Lock Out Pins	1
21c, 13	121183	Back Release Cable, 12" Wide, Black with Lock Out Pins	1
21d, 13	121184	Back Release Cable, 13" Wide, Black with Lock Out Pins	1
21e, 13	121185	Back Release Cable, 14" Wide, Black with Lock Out Pins	1
21f, 13	121186	Back Release Cable, 15" Wide, Black with Lock Out Pins	1
21g, 13	121187	Back Release Cable, 16" Wide, Black with Lock Out Pins	1
21h, 13	121188	BACK RELEASE CABLE, 17" WIDE, BLACK with Lock Out Pins	1
21i, 14	121189	BACK RELEASE CABLE, 18" WIDE, BLACK with Lock Out Pins	1

Color Anodizing Samples

