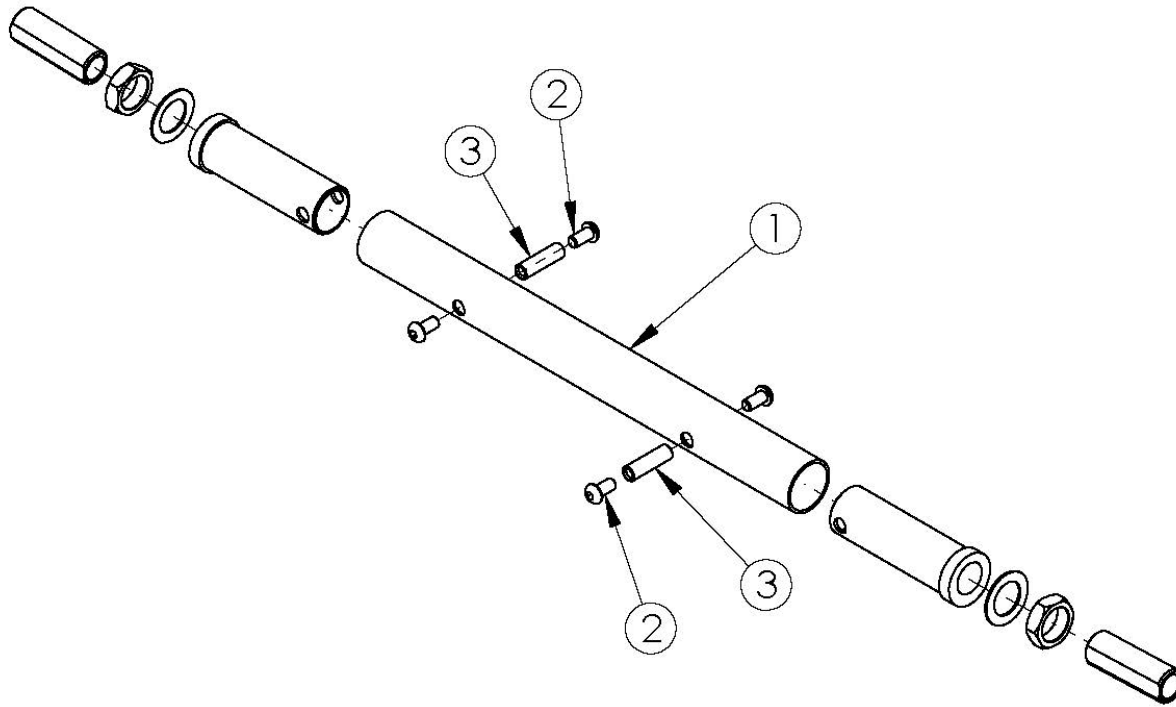


(Discontinued) Rogue XP Camber Tube - Growth



Black Camber Tube kits based on seat width. Color Anodized Camber Tube kits used on all chair widths. New camber tube required when changing the degree of camber by more than 2 degrees. If Wheelchair Drive Ready option is present, replacement parts need to be processed through Alber USA. Used on chairs invoiced prior to 3/12/25

Item Number	Part Number	Description	Quantity
1a	500720	Camber Tube Rigid 10" Kit Black	1
1b	500721	Camber Tube Rigid 11" Kit Black	1
1c	500722	Camber Tube Rigid 12" Kit Black	1
1d	500723	Camber Tube Rigid 13" Kit Black	1
1e	500724	Camber Tube Rigid 14" Kit Black	1
1f	500725	Camber Tube Rigid 15" Kit Black	1
1g	500726	Camber Tube Rigid 16" Kit Black	1
1h	500727	Camber Tube Rigid 17" Kit Black	1
1i	500728	Camber Tube Rigid 18" Kit Black	1

Item Number	Part Number	Description	Quantity
1j	501749	Camber Tube Rigid Blue Anodized	1
1k	501750	Camber Tube Rigid Bright Green Anodized	1
1l	501751	Camber Tube Rigid Orange Anodized	1
1m	501752	Camber Tube Rigid Pink Anodized	1
1n	501753	Camber Tube Rigid Pewter Anodized	1
1o	501754	Camber Tube Rigid Purple Anodized	1
1p	501755	Camber Tube Rigid Red Anodized	1
1q	501756	Camber Tube Rigid Gold Anodized	1
2	100667	M6 x 12 BTN SHCS BLKZC w/Patch	4
3	000066	M6 x 27 Threaded Barrel	2

Color Anodizing Samples

