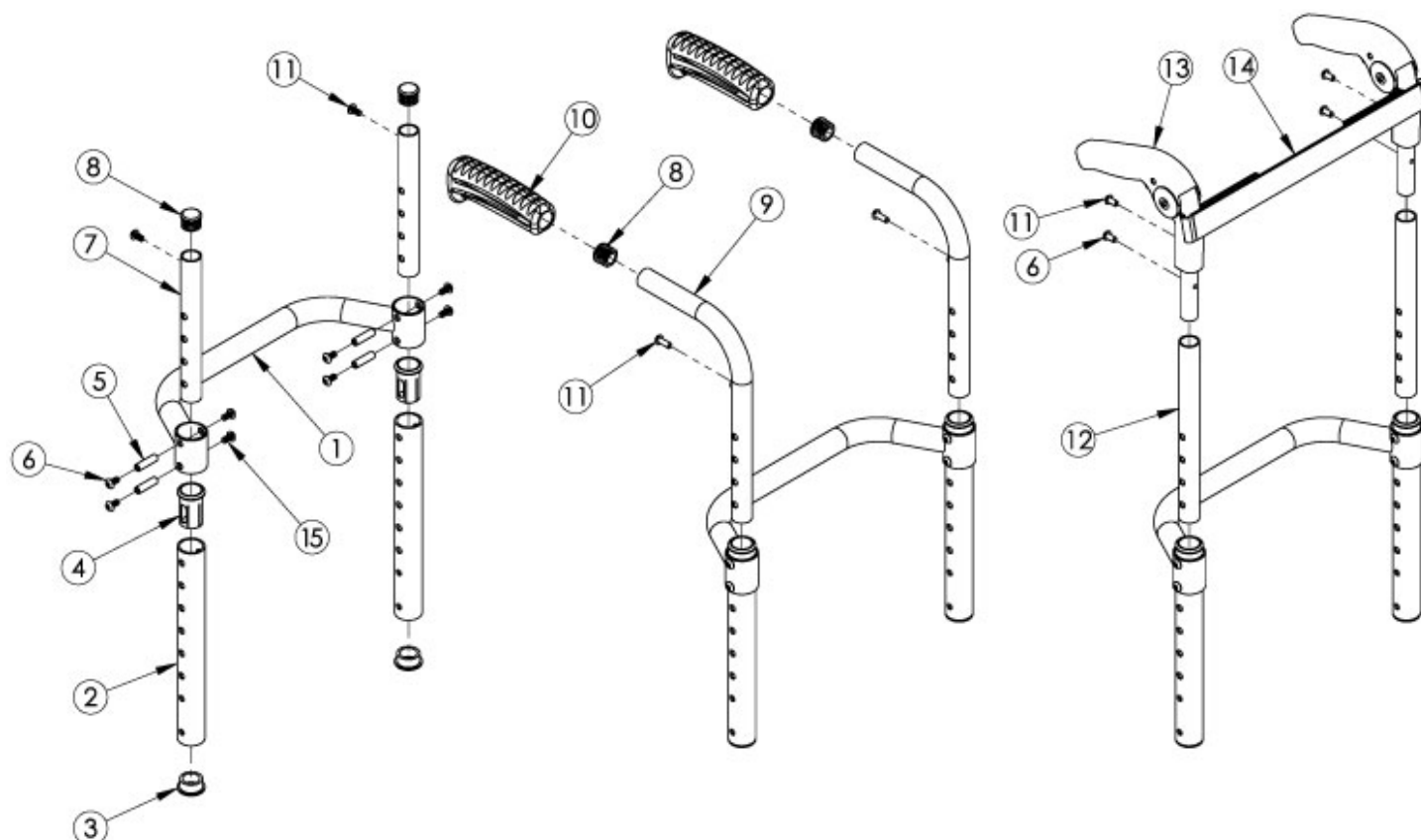


Clik / Rogue XP Height Adjustable Back Post



For item 1, see [Little Wave Clik Adjustable Height Rigidizer Bar](#) page or [Rogue XP Adjustable Height Rigidizer Bar](#) page. If changing from another style backrest and the Drum Brake is present, a new Drum Brake Cable Kit may be required

Item Number	Part Number	Description	Quantity
6, 12a, 11, 13	502609	Fold Down Push Handle Assembly for Height Adj Back Short, Clik/Rogue XP <i>Used with Short back height range</i>	1
6, 12b, 11, 13	502610	Fold Down Push Handle Assembly for Height Adj Back Medium/Tall, Clik/Rogue XP <i>Used with Medium and Tall back height ranges</i>	1
8, 9a, 10a	502602	Standard Push Handle Assembly, Short <i>Used with Extra Short and Short back height ranges and drum brake is not present</i>	1
8, 9b, 10a	110582	Standard Push Handle Assembly, Medium/Tall <i>Used with Medium and Tall back height ranges and drum brake is not present</i>	1
8, 9e, 10a	113221	Backtube w/ Push Handle Short with Backcane Extension, Drum Brake, Rigid <i>Used with Extra Short and Short back height ranges and drum brake is present. To view the backcane extension included in this kit, see the Rogue XP / Clik / Little Wave XP Drum Brake page.</i>	1
8, 9f, 10a	113222	Backtube w/ Push Handle Medium with Backcane Extension, Drum Brake, Rigid	1

Item Number	Part Number	Description	Quantity
		<i>Used with Medium and Tall back height ranges and drum brake is present. To view the backcane extension included in this kit, see the Rogue XP / Klik / Little Wave XP Drum Brake page.</i>	
8, 9c, 10b	107205	Low Profile Push Handle Assembly, Short <i>Used with Extra Short and Short back height ranges</i>	1
8, 9d, 10b	110583	Low Profile Push Handle Assembly, Medium/Tall <i>Used with Medium and Tall back height ranges</i>	1
2a, 3, 4	502604	Height Adjustable Back Post 6.5" with Tube End Plug and Sleeve <i>Used with Extra Short back height range with omit push handles, standard push handles and low profile push handles or used with Short back height range with fold down push handles</i>	1
2b, 3, 4	110581	Height Adjustable Back Post 7.5" with Tube End Plug and Sleeve <i>Used with Medium back height range with fold down push handles</i>	1
2c, 3, 4	502605	Height Adjustable Back Post 8.5" with Tube End Plug and Sleeve <i>Used with Short back height range with omit push handles, standard push handles and low profile push handles or used with tall back height range with fold down push handles</i>	1
2d, 3, 4	502606	Height Adjustable Back Post 10.5" with Tube End Plug and Sleeve <i>Used with Medium and Tall back height ranges with omit push handles, standard push handles and low profile push handles</i>	1
3	100804	Tube End Plug 1"	2
4	000034	Sleeve 3/4" x 1 1/2"	2
5	000073	M5 x 24 Threaded Barrel	4
6	103524	M5 x 10 BTN SHCS BLK ZN	4
7a, 8	502608	Straight Upper Back Tube 6.25" with Tube End Plug <i>Used with Extra Short and Short back height ranges</i>	1
7b, 8	107209	Straight Upper Back Tube 9.5" with Tube End Plug <i>Used with Medium and Tall back height ranges</i>	1
8	100638	Tube End Plug 3/4"	2
10a	109432	Ergo Push Handle Grip 3/4" Standard with Instruction	1
11	100734	M5 x 16 PHMS ZC <i>Used to mount back upholstery and/or Fold Down Push Handle</i>	2
13	001735	Folding Handle Assembly Rigid <i>This is to replace an existing Fold Down Push Handle. If wanting to retrofit to the Fold Down Push Handle, order one of the following complete assemblies based on back height range: 502609 or 502610</i>	1

Item Number	Part Number	Description	Quantity
14a	001748	Tension Strap Folding Handle 9-11 Wide	1
14b	001749	Tension Strap Folding Handle 12-13 Wide	1
14c	001750	Tension Strap Folding Handle 14-15 Wide	1
14d	001751	Tension Strap Folding Handle 16-17 Wide	1
14e	001752	Tension Strap Folding Handle 18-19 Wide	1
15	100669	M5 x 10 BTN SHCS BLKZC w/Patch	4