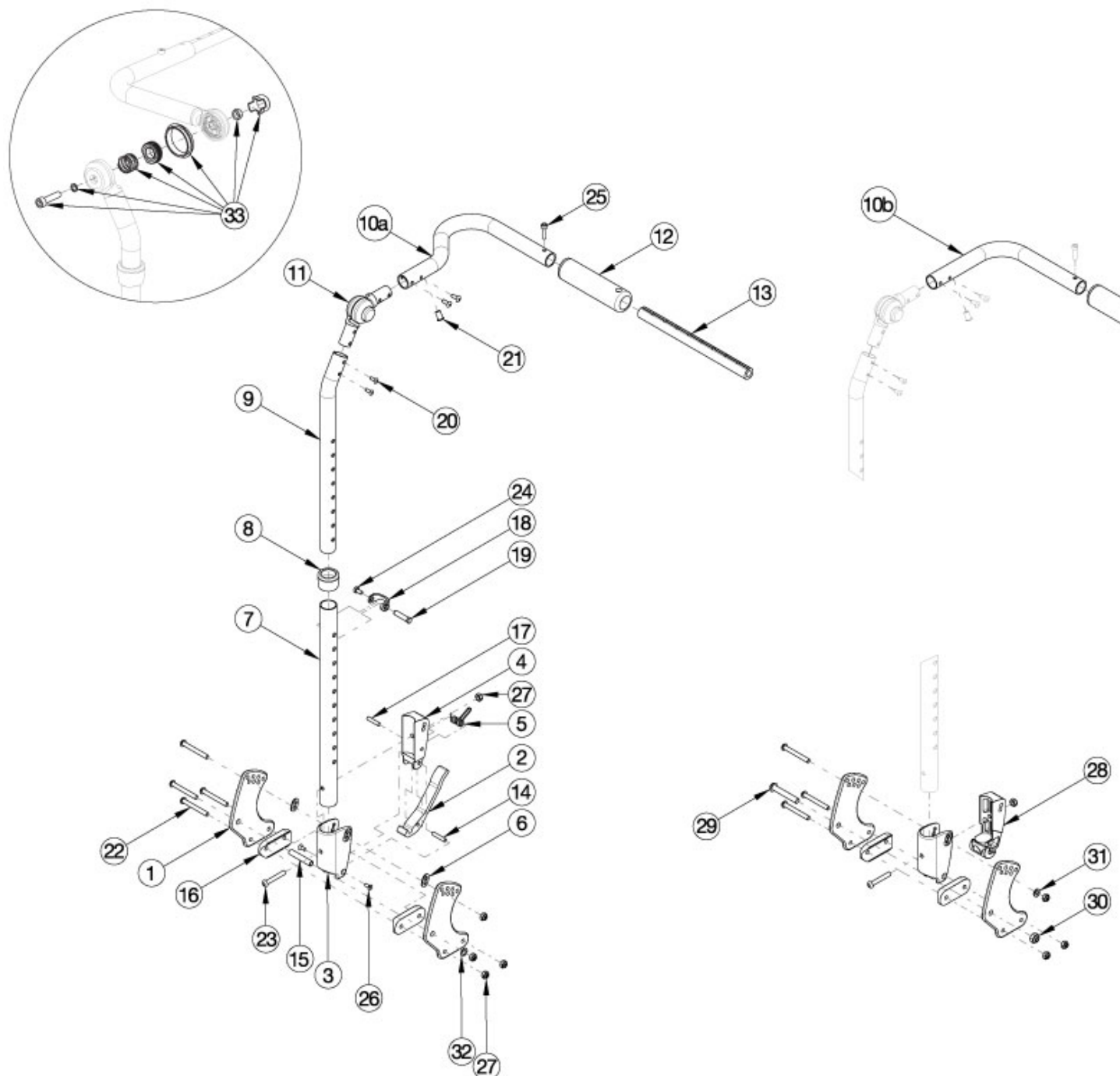


Flip Adjustable Height with Adjustable Handle Backrest



If chair width is 14"-18" wide and has a serial number of FLP010784 through FLP011079, see the *Discontinued Flip Adjustable Height with Adjustable Handle Backrest* page. Callout #10a (10"-13" widths) receive the curved handle and callout #10b (14"-18" widths) receive the "L" shaped handle. Note: Tilt Mechanism parts may be required if changing to a different backrest style. Please see the applicable tilt mechanism parts manual page for verification.

| Item Number | Part Number | Description | Quantity |
|-------------|-------------|-----------------|----------|
| 1a | 001890 | Back Plate, Std | 2 |

| Item Number | Part Number | Description | Quantity |
|------------------------|-------------|--|----------|
| 1b | 001891 | Back Plate, Transit | 1 |
| 2 | 001893 | Latch Lever, Backrest | 1 |
| 3, 6 | 503834 | Cover Plate, Latch Insert Kit | 1 |
| 4 | 001895 | Latch Insert, Folding Backrest | 1 |
| 5 | 001896 | Spring, Backrest Latch | 1 |
| 6 | 001897 | Washer, Dual, PSA | 2 |
| 8 | 001083 | Bushing Height Adjustable Back Tilt | 1 |
| 9, 10a, 11, 12, 20, 21 | 502813 | Upper Back Tube Assembly, Height Adj, 10-13W, Right FLIP | 1 |
| 9, 10a, 11, 12, 20, 21 | 502814 | Upper Back Tube Assembly, Height Adj, 10-13W Left FLIP | 1 |
| 9, 10b, 11, 12, 20, 21 | 502665 | Upper Back Tube Assembly Height Adj, Right Focus/Flip <i>Used on 14-18 wide with serial numbers prior to FLP010784 and serial numbers starting with FLP011080</i> | 1 |
| 9, 10b, 11, 12, 20, 21 | 502666 | Upper Back Tube Assembly Height Adj, Left Focus/Flip <i>Used on 14-18 wide with serial numbers prior to FLP010784 and serial numbers starting with FLP011080</i> | 1 |
| 13a | 002578 | Growth Strut, Stroller, Short | 1 |
| 13a, 25 | 503107 | Growth Strut Assembly Short, Focus/Flip | 1 |
| 13b, 25 | 503108 | Growth Strut Assembly Long, Flip/Focus | 1 |
| 13b | 002579 | Growth Strut, Stroller, Long <i>Used only if growing chair from 13" wide or less to 14" wide or greater</i> | 1 |
| 14 | 002513 | Threaded Barrel, 5mm OD x M4 | 1 |
| 15 | 002738 | Spacer .313 OD x .243 ID x 1.68 long | 1 |
| 16 | 002595 | Saddle, Dual, 1" OD X 1.5 SP | 2 |
| 17 | 102694 | Dowel Pin, M5 X 24, Blk Zn | 1 |
| 18 | 000988 | Fastener Retainer | 1 |
| 19 | 000987 | Threaded Fastener | 1 |
| 22 | 101781 | M6 x 50mm Partial Thread BHCS Blk ZC | 4 |
| 23 | 100797 | M6 x 40 BHCS BLK ZC | 1 |
| 24 | 200427 | M5 x 10 CLS8.8 HHCS ZC w/Patch DIN933 | 1 |
| 25 | 101843 | M5 x 20 SHCS Blk Zn | 1 |

| Item Number | Part Number | Description | Quantity |
|--|-------------|---|----------|
| 26 | 101818 | M4 x 10 FHCS BLKZC w/Patch | 2 |
| 27 | 100658 | M6 Nylock Nut Blk Zn | 5 |
| 28 | 002035 | Insert, Backrest, Non-Folding | 1 |
| 29 | 101815 | M8 x 50 BHCS Blk Zn | 1 |
| 30 | 100659 | M8 Nylock Nut Blk Zn | 1 |
| 31 | 100746 | M6 Flat Washer Blk Zn | 1 |
| 32 | 101861 | Nylon Washer 5/16 x 1/2 x .03 | 1 |
| 33 | 110524 | Locking Hinge Button Assembly with Instruction <i>This kit contains the contents inside callout # 11. This assembly may not be compatible if chair was invoiced prior to 6/22/16</i> | 1 |
| 1a, 6, 15, 16, 22, 27, 32 | 502819 | Backrest Hardware Kit Std FLIP | 1 |
| 1a, 1b, 6, 15, 16, 22, 27, 32 | 502820 | Backrest Hardware Kit Std Transit (one side), FLIP | 1 |
| 1a, 16, 22, 23, 27, 29-31 | 503027 | Backrest Hardware Kit, Non Folding, Flip | 1 |
| 1a, 1b, 16, 22, 23, 27, 29-31 | 503163 | Backrest Hardware Kit Non-Folding (one side), Transit, Flip | 1 |
| 2-6, 7a, 8, 14, 15, 17-19, 22 - 24, 26, 27, 32 | 502663 | Back Assembly w/Latch Insert Lower Tube Height Adjustable Short Focus/CR45/Flip | 1 |
| 2-6, 7b, 8, 14, 15, 17-19, 22 - 24, 26, 27, 32 | 502664 | Back Assembly w/Latch Insert Lower Tube Height Adjustable Tall Focus/CR45/Flip | 1 |
| 3, 7a, 8, 18, 19, 22 - 24, 27 - 31 | 502673 | Lower Tube w/Latch Insert Height Adjustable Back Short Non-Folding Focus/CR45/Flip | 1 |
| 3, 7b, 8, 18, 19, 22 - 24, 27 - 31 | 502674 | Lower Tube w/Latch Insert Height Adjustable Back Tall Non-Folding Focus/CR45/Flip | 1 |