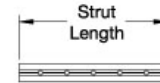
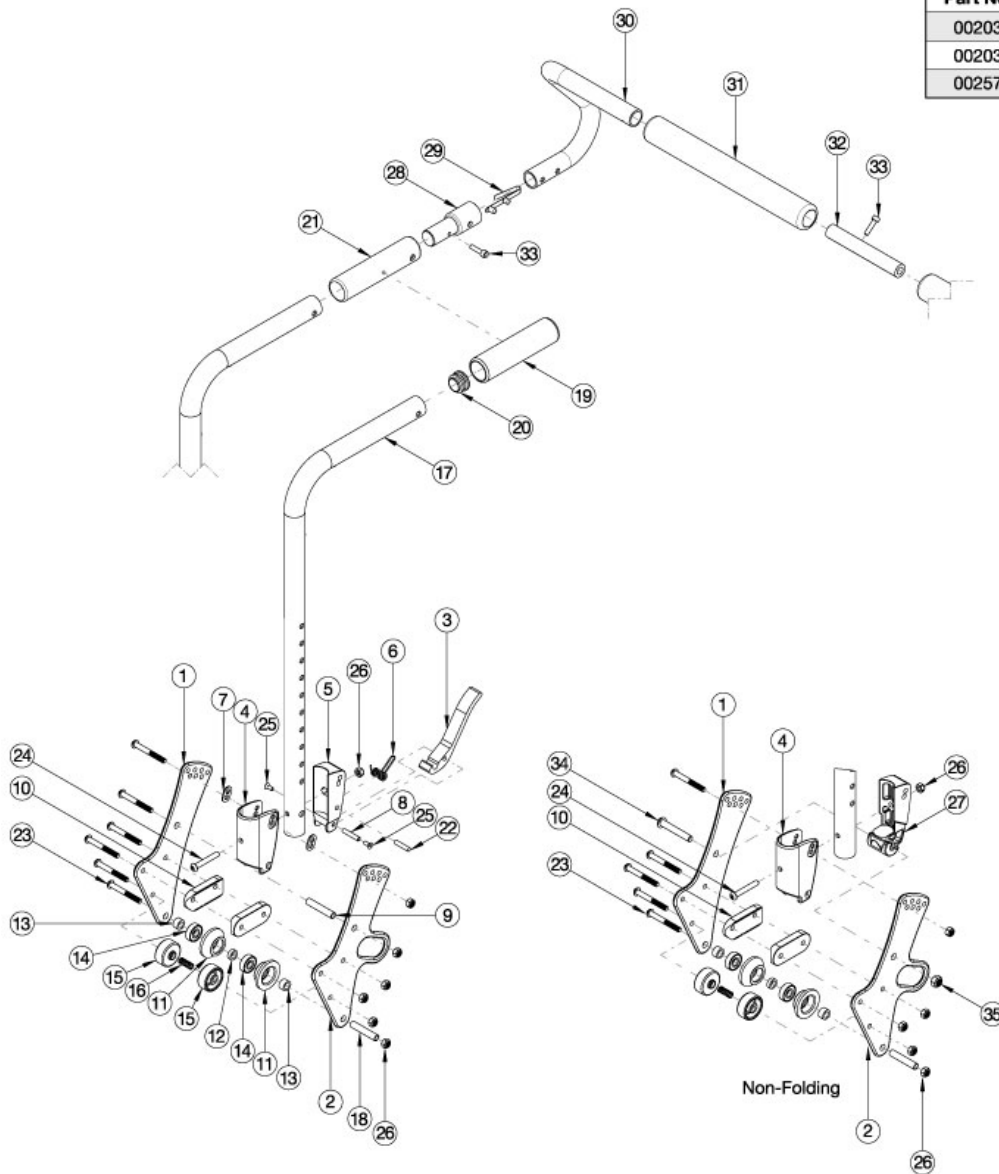


Arc Stroller Handle Backrest



Handle Strut (Item 32)			
Part No.	Growth Range	Used on Widths	Length
002032	10"-12"	10"	4.6"
002033	11"-13"	11"-13"	5.6"
002578	14"-20"	14"-18"	8.8"



When changing backrest types, check to see if new cables and tilt triggers are needed for both foot and hand tilts.

Item Number	Part Number	Description	Quantity
3-8, 17a, 19, 20, 22, 24-26	113523	Stroller Handle Backrest Assembly, Short, Arc	2
3-8, 17b, 19, 20, 22, 24-26	113524	Stroller Handle Backrest Assembly, Tall, Arc	2
4, 17a, 19, 20, 24, 26, 27	113525	Stroller Handle Backrest Assembly, Non-Folding, Short, Arc	2

Item Number	Part Number	Description	Quantity
4, 17b, 19, 20, 24, 26, 27	113526	Stroller Handle Backrest Assembly, Non-Folding, Tall, Arc	2
3-8, 17a, 21, 22, 24-26	113527	Stroller Handle Backrest Assembly with Stroller Handle Extension Grip, Short, Arc	2
3-8, 17b, 21, 22, 24-26	113528	Stroller Handle Backrest Assembly with Stroller Handle Extension Grip, Tall, Arc	2
4, 17a, 21, 24, 26, 27	113529	Stroller Handle Backrest Assembly with Stroller Handle Extension Grip, Non-Folding, Short, Arc	2
4, 17b, 21, 24, 26, 27	113530	Stroller Handle Backrest Assembly with Stroller Handle Extension Grip, Non-Folding, Tall, Arc	2
1, 7, 9, 10, 23, 26	113531	Stroller Handle Backrest Hardware Kit, Folding, Arc	2
1, 2, 7, 9, 10, 23, 26	113532	Stroller Handle Backrest Hardware Kit, Folding, Transit, Arc	2
1, 10, 23, 26, 34, 35	113533	Stroller Handle Backrest Hardware Kit, Non-Folding, Arc	2
1, 2, 10, 23, 26, 34, 35	113534	Stroller Handle Backrest Hardware Kit, Non-Folding, Transit, Arc	2
17a, 19, 20	113535	Stroller Handle Backrest Tube Assembly, Short, Arc	2
17b, 19, 20	113536	Stroller Handle Backrest Tube Assembly, Tall, Arc	2
17a, 21	113537	Stroller Handle Backrest Tube Assembly with Stroller Handle Extension Grip, Short, Arc	2
17b, 21	113538	Stroller Handle Backrest Tube Assembly with Stroller Handle Extension Grip, Tall, Arc	2
28, 29, 30a, 30b, 31, 32a, 33	113539	Removable Stroller Handle Assembly, 10" width, Arc	1
28, 29, 30a, 30b, 31, 32b, 33	113540	Removable Stroller Handle Assembly, 11-13" width, Arc	1
28, 29, 30c, 30d, 31, 32c, 33	113541	Removable Stroller Handle Assembly, 14-18" width, Arc	1
29, 30a, 31	113542	Removable Stroller Handle with Foam, Pediatric, Right, Arc <i>Used on small and medium width ranges</i>	1
29, 30b, 31	113543	Removable Stroller Handle with Foam, Pediatric, Left, Arc <i>Used on small and medium width ranges</i>	1
29, 30c, 31	113544	Removable Stroller Handle with Foam, Standard, Right, Arc <i>Used on large and x-large width ranges</i>	1
29, 30d, 31	113545	Removable Stroller Handle with Foam, Standard, Left, Arc <i>Used on large and x-large width ranges</i>	1
11-16, 18, 26	113546	Backrest Roller Kit, Arc	2
1	110190	Back Plate, Bearing Guide, Standard	1
2	113181	Transit Back Plate, Standard, Arc	1
3	111409	Lever, Latch, Backrest	1

Item Number	Part Number	Description	Quantity
4, 7	503834	Cover Plate, Latch Insert Kit	1
5	001895	Latch Insert, Folding Backrest	1
6	001896	Spring, Backrest Latch	1
7	001897	Washer, Dual, PSA	2
8	002513	Threaded Barrel, 5mm OD x M4	1
9	002738	Spacer .313 OD x .243 ID x 1.68 long	1
10	002595	Saddle, Dual, 1" OD X 1.5 SP	2
20	100804	Tube End Plug 1"	1
22	102694	Dowel Pin, M5 X 24, Blk Zn	1
23	101781	M6 x 50mm Partial Thread BHCS Blk ZC	6
24	100797	M6 x 40 BHCS BLK ZC	1
25	101818	M4 x 10 FHCS BLKZC w/Patch	2
26	100658	M6 Nylock Nut Blk Zn	1
27	002035	Insert, Backrest, Non-Folding	1
28	001243	Stroller Handle Adaptor	1
32a	002032	Growth Strut, Stroller, 10-12	1
32b	002033	Growth Strut, Stroller, 11-13	1
32c	002578	Growth Strut, Stroller, Short	1
33	101843	M5 x 20 SHCS Blk Zn	2
34	101815	M8 x 50 BHCS Blk Zn	1
35	100659	M8 Nylock Nut Blk Zn	1