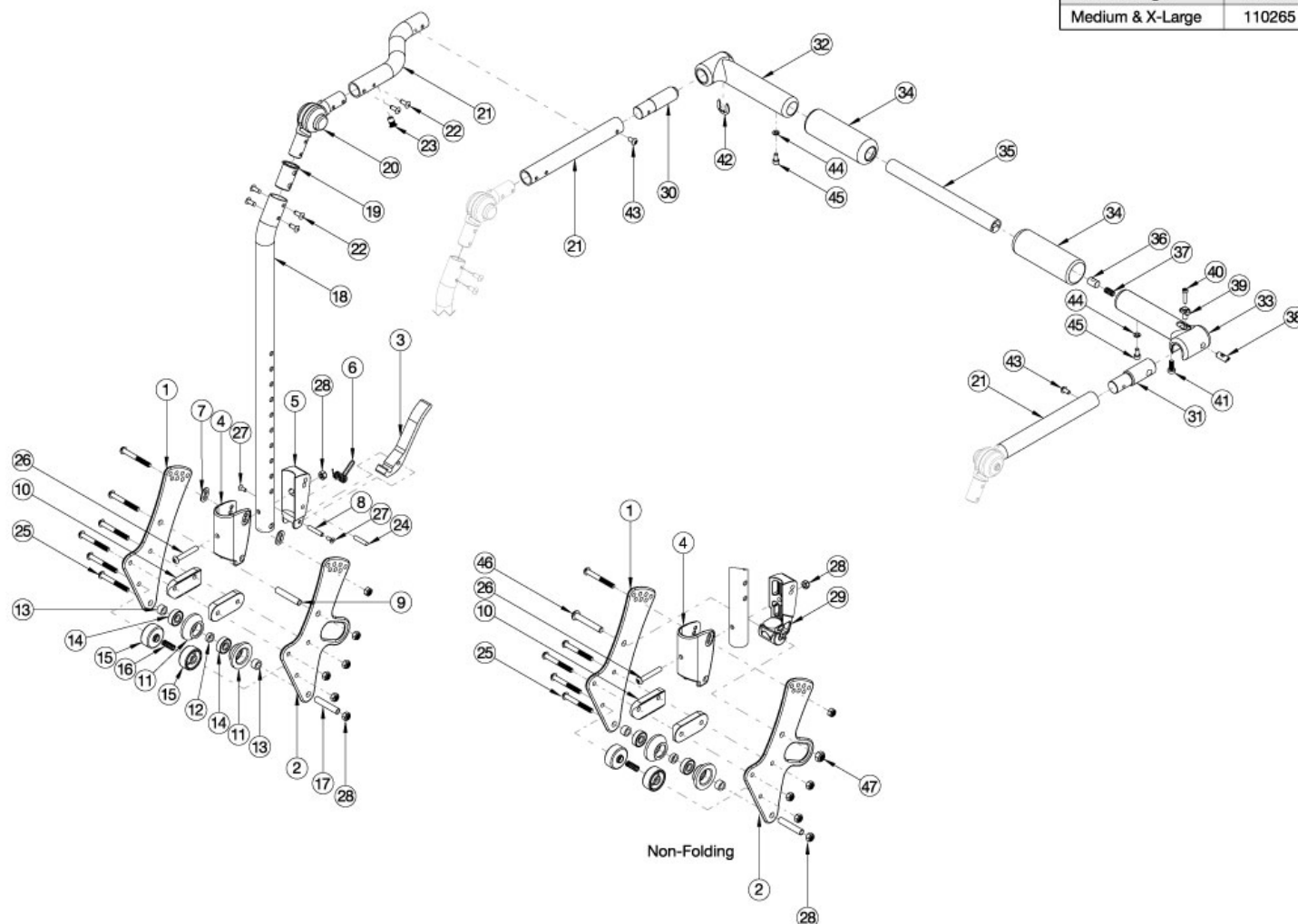


Arc Fixed Height with Folding Adjustable Handle Backrest

Handle Crosstube (Item 35)	
Chair Width Range	Part No.
Small & Large	110264
Medium & X-Large	110265



If chair was invoiced prior to 12/18/23, an upper back tube assembly is required. If chair was invoiced after to 12/18/23, parts 18-22 shown in the diagram above can now be purchased individually. Callout #21: The curved tube is used with the small and medium width ranges (10"-14") and the straight shaped tube is used with the large and extra large (14"-18") width ranges. When changing backrest types, check to see if new cables and tilt triggers are needed for both foot and hand tilts.

Item Number	Part Number	Description	Quantity
3, 5- 9, 24, 25, 27, 28	125288	Backrest Hardware Retro Fit Kit Folding Arc <i>Used when changing to a folding backrest from a non-folding backrest. Includes parts for both sides</i>	1
4, 26, 28, 29, 46, 47	125291	Non Folding Hardware Retro Fit Kit Arc <i>Used when changing to a non-folding backrest from a folding backrest. Includes parts for both sides</i>	1
1, 3-10, 18a, 19, 20, 21b, 22-28	113556	Fixed Height w/ Adjustable Handle Backrest Assembly, 10-13" Wide, Short, Left, Arc	1

Item Number	Part Number	Description	Quantity
1, 3-10, 18a, 19, 20, 21a, 22-28	113557	Fixed Height w/ Adjustable Handle Backrest Assembly, 10-13" Wide, Short, Right, Arc	1
1, 3-10, 18a, 19, 20, 21d, 22-28	113548	Fixed Height w/ Adjustable Handle Backrest Assembly, 14-18" Wide, Short, Left, Arc	1
1, 3-10, 18a, 19, 20, 21c, 22-28	113549	Fixed Height w/ Adjustable Handle Backrest Assembly, 14-18" Wide, Short, Right, Arc	1
1-10, 18a, 19, 20, 21b, 22-28	113560	Fixed Height w/ Adjustable Handle Backrest Assembly, Transit, 10-13" Wide, Short, Left, Arc	1
1-10, 18a, 19, 20, 21a, 22-28	113561	Fixed Height w/ Adjustable Handle Backrest Assembly, Transit, 10-13" Wide, Short, Right, Arc	1
1-10, 18a, 19, 20, 21d, 22-28	113552	Fixed Height w/ Adjustable Handle Backrest Assembly, Transit, 14-18" Wide, Short, Left, Arc	1
1-10, 18a, 19, 20, 21c, 22-28	113553	Fixed Height w/ Adjustable Handle Backrest Assembly, Transit, 14-18" Wide, Short, Right, Arc	1
1, 3-10, 18b, 19, 20, 21b, 22-28	113572	Fixed Height w/ Adjustable Handle Backrest Assembly, 10-13" Wide, Tall, Left, Arc	1
1, 3-10, 18b, 19, 20, 21a, 22-28	113573	Fixed Height w/ Adjustable Handle Backrest Assembly, 10-13" Wide, Tall, Right, Arc	1
1, 3-10, 18b, 19, 20, 21d, 22-28	113564	Fixed Height w/ Adjustable Handle Backrest Assembly, 14-18" Wide, Tall, Left, Arc	1
1, 3-10, 18b, 19, 20, 21c, 22-28	113565	Fixed Height w/ Adjustable Handle Backrest Assembly, 14-18" Wide, Tall, Right, Arc	1
1-10, 18b, 19, 20, 21b, 22-28	113576	Fixed Height w/ Adjustable Handle Backrest Assembly, Transit, 10-13" Wide, Tall, Left, Arc	1
1-10, 18b, 19, 20, 21a, 22-28	113577	Fixed Height w/ Adjustable Handle Backrest Assembly, Transit, 10-13" Wide, Tall, Right, Arc	1
1-10, 18b, 19, 20, 21d, 22-28	113568	Fixed Height w/ Adjustable Handle Backrest Assembly, Transit, 14-18" Wide, Tall, Left, Arc	1
1-10, 18b, 19, 20, 21c, 22-28	113569	Fixed Height w/ Adjustable Handle Backrest Assembly, Transit, 14-18" Wide, Tall, Right, Arc	1
1, 4, 10, 18a, 19, 20, 21b, 22, 23, 25, 26, 28, 29, 46, 47	113558	Fixed Height w/ Adjustable Handle Backrest Assembly, Non-Folding, 10-13" Wide, Short, Left, Arc	1
1, 4, 10, 18a, 19, 20, 21a, 22, 23, 25, 26, 28, 29, 46, 47	113559	Fixed Height w/ Adjustable Handle Backrest Assembly, Non-Folding, 10-13" Wide, Short, Right, Arc	1
1, 4, 10, 18a, 19, 20, 21d, 22, 23, 25, 26, 28, 29, 46, 47	113550	Fixed Height w/ Adjustable Handle Backrest Assembly, Non-Folding, 14-18" Wide, Short, Left, Arc	1
1, 4, 10, 18a, 19, 20, 21c, 22, 23, 25, 26, 28, 29, 46, 47	113551	Fixed Height w/ Adjustable Handle Backrest Assembly, Non-Folding, 14-18" Wide, Short, Right, Arc	1

Item Number	Part Number	Description	Quantity
1, 4, 10, 18a, 19, 20, 21b, 22, 23, 25, 26, 28, 29, 46, 47	113562	Fixed Height w/ Adjustable Handle Backrest Assembly, Transit, Non-Folding, 10-13" Wide, Short, Left, Arc	1
1, 4, 10, 18a, 19, 20, 21a, 22, 23, 25, 26, 28, 29, 46, 47	113563	Fixed Height w/ Adjustable Handle Backrest Assembly, Transit, Non-Folding, 10-13" Wide, Short, Right, Arc	1
1, 4, 10, 18a, 19, 20, 21d, 22, 23, 25, 26, 28, 29, 46, 47	113554	Fixed Height w/ Adjustable Handle Backrest Assembly, Transit, Non-Folding, 14-18" Wide, Short, Left, Arc	1
1, 4, 10, 18a, 19, 20, 21c, 22, 23, 25, 26, 28, 29, 46, 47	113555	Fixed Height w/ Adjustable Handle Backrest Assembly, Transit, Non-Folding, 14-18" Wide, Short, Right, Arc	1
1, 4, 10, 18a, 19, 20, 21b, 22, 23, 25, 26, 28, 29, 46, 47	113574	Fixed Height w/ Adjustable Handle Backrest Assembly, Non-Folding, 10-13" Wide, Tall, Left, Arc	1
1, 4, 10, 18a, 19, 20, 21a, 22, 23, 25, 26, 28, 29, 46, 47	113575	Fixed Height w/ Adjustable Handle Backrest Assembly, Non-Folding, 10-13" Wide, Tall, Right, Arc	1
1, 4, 10, 18b, 19, 20, 21d, 22, 23, 25, 26, 28, 29, 46, 47	113566	Fixed Height w/ Adjustable Handle Backrest Assembly, Non-Folding, 14-18" Wide, Tall, Left, Arc	1
1, 4, 10, 18b, 19, 20, 21c, 22, 23, 25, 26, 28, 29, 46, 47	113567	Fixed Height w/ Adjustable Handle Backrest Assembly, Non-Folding, 14-18" Wide, Tall, Right, Arc	1
1, 4, 10, 18a, 19, 20, 21b, 22, 23, 25, 26, 28, 29, 46, 47	113578	Fixed Height w/ Adjustable Handle Backrest Assembly, Transit, Non-Folding, 10-13" Wide, Tall, Left, Arc	1
1, 4, 10, 18a, 19, 20, 21a, 22, 23, 25, 26, 28, 29, 46, 47	113579	Fixed Height w/ Adjustable Handle Backrest Assembly, Transit, Non-Folding, 10-13" Wide, Tall, Right, Arc	1
1, 4, 10, 18b, 19, 20, 21d, 22, 23, 25, 26, 28, 29, 46, 47	113570	Fixed Height w/ Adjustable Handle Backrest Assembly, Transit, Non-Folding, 14-18" Wide, Tall, Left, Arc	1
1, 4, 10, 18b, 19, 20, 21c, 22, 23, 25, 26, 28, 29, 46, 47	113571	Fixed Height w/ Adjustable Handle Backrest Assembly, Transit, Non-Folding, 14-18" Wide, Tall, Right, Arc	1
3-8, 18a, 19, 20, 21a, 22-24, 26-28	113588	Fixed Height w/ Adjustable Handle Back Tube Assembly, 10-13" Wide, Short, Right, Arc	1
3-8, 18a, 19, 20, 21b, 22-24, 26-28	113589	Fixed Height w/ Adjustable Handle Back Tube Assembly, 10-13" Wide, Short, Left, Arc	1
3-8, 18a, 19, 20, 21c, 22-24, 26-28	113580	Fixed Height w/ Adjustable Handle Back Tube Assembly, 14-18" Wide, Short, Right, Arc	1

Item Number	Part Number	Description	Quantity
3-8, 18a, 19, 20, 21d, 22-24, 26-28	113581	Fixed Height w/ Adjustable Handle Back Tube Assembly, 14-18" Wide, Short, Left, Arc	1
3-8, 18b, 19, 20, 21a, 22-24, 26-28	113590	Fixed Height w/ Adjustable Handle Back Tube Assembly, 10-13" Wide, Tall, Right, Arc	1
3-8, 18b, 19, 20, 21b, 22-24, 26-28	113591	Fixed Height w/ Adjustable Handle Back Tube Assembly, 10-13" Wide, Tall, Left, Arc	1
3-8, 18b, 19, 20, 21c, 22-24, 26-28	113582	Fixed Height w/ Adjustable Handle Back Tube Assembly, 14-18" Wide, Tall, Right, Arc	1
3-8, 18b, 19, 20, 21d, 22-24, 26-28	113583	Fixed Height w/ Adjustable Handle Back Tube Assembly, 14-18" Wide, Tall, Left, Arc	1
4, 18a, 19, 20, 21a, 22, 23, 26, 28, 29	113592	Fixed Height w/ Adjustable Handle Back Tube Assembly, Non-Folding, 10-13" Wide, Short, Right, Arc	1
4, 18a, 19, 20, 21b, 22, 23, 26, 28, 29	113593	Fixed Height w/ Adjustable Handle Back Tube Assembly, Non-Folding, 10-13" Wide, Short, Left, Arc	1
4, 18a, 19, 20, 21c, 22, 23, 26, 28, 29	113584	Fixed Height w/ Adjustable Handle Back Tube Assembly, Non-Folding, 14-18" Wide, Short, Right, Arc	1
4, 18a, 19, 20, 21d, 22, 23, 26, 28, 29	113585	Fixed Height w/ Adjustable Handle Back Tube Assembly, Non-Folding, 14-18" Wide, Short, Left, Arc	1
4, 18b, 19, 20, 21a, 22, 23, 26, 28, 29	113594	Fixed Height w/ Adjustable Handle Back Tube Assembly, Non-Folding, 10-13" Wide, Tall, Right, Arc	1
4, 18b, 19, 20, 21b, 22, 23, 26, 28, 29	113595	Fixed Height w/ Adjustable Handle Back Tube Assembly, Non-Folding, 10-13" Wide, Tall, Left, Arc	1
4, 18b, 19, 20, 21c, 22, 23, 26, 28, 29	113586	Fixed Height w/ Adjustable Handle Back Tube Assembly, Non-Folding, 14-18" Wide, Tall, Right, Arc	1
4, 18b, 19, 20, 21d, 22, 23, 26, 28, 29	113587	Fixed Height w/ Adjustable Handle Back Tube Assembly, Non-Folding, 14-18" Wide, Tall, Left, Arc	1
1, 7, 9, 10, 25, 28	113596	Fixed Height w/ Adjustable Handle Backrest Hardware Kit, Standard, Arc	1
1, 10, 25, 28, 46, 47	113597	Fixed Height w/ Adjustable Handle Backrest Hardware Kit, Standard, Non-Folding, Arc	1
1, 2, 7, 9, 10, 25, 28	113598	Fixed Height w/ Adjustable Handle Backrest Hardware Kit, Transit, Arc	1
1, 2, 10, 25, 28, 46, 47	113599	Fixed Height w/ Adjustable Handle Backrest Hardware Kit, Transit, Non-Folding, Arc	1
30, 32, 34, 42, 44, 45	113600	Rigidizer Handle Pivot Assembly with Adapter with Foam Grip, Arc	1
31, 33, 34, 36-41, 44, 45	113601	Rigidizer Handle Latch Assembly with Adapter with Foam Grip, Arc	1
30-34, 35a, 36-45	113602	Rigidizer Handle Complete Assembly, Small and Large Width Ranges, Arc	1
30-34, 35b, 36-45	113603	Rigidizer Handle Complete Assembly, Medium and X-Large Width Ranges, Arc	1

Item Number	Part Number	Description	Quantity
11-17, 28	113546	Backrest Roller Kit, Arc	2
1	110190	Back Plate, Bearing Guide, Standard	1
2	113181	Transit Back Plate, Standard, Arc	1
3	111409	Lever, Latch, Backrest	1
4, 7	503834	Cover Plate, Latch Insert Kit	1
5	001895	Latch Insert, Folding Backrest	1
6	001896	Spring, Backrest Latch	1
7	001897	Washer, Dual, PSA	2
8	002513	Threaded Barrel, 5mm OD x M4	1
9	002738	Spacer .313 OD x .243 ID x 1.68 long	1
10	002595	Saddle, Dual, 1" OD X 1.5 SP	2
18a	003495	Fixed Height Back Post for Adjustable Handle Short <i>Used on chairs starting 12/18/23</i>	1
18b	003496	Fixed Height Back Post for Adjustable Handle Tall <i>Used on chairs starting 12/18/23</i>	1
19	001266	Bushing .832 OD x .720 ID <i>Used on chairs starting 12/18/23</i>	1
20	116066	Locking Hinge Assembly <i>Used on chairs starting 12/18/23</i>	1
21a	110251	Push Handle, Angle Adjustable Offset, Right <i>Used on chairs starting 12/18/23</i>	1
21b	110252	Push Handle, Angle Adjustable Offset, Left <i>Used on chairs starting 12/18/23</i>	1
21c	110256	Push Handle, Angle Adjustable, Right <i>Used on chairs starting 12/18/23</i>	1
21d	110257	Push Handle, Angle Adjustable, Left <i>Used on chairs starting 12/18/23</i>	1
22	100669	M5 x 10 BTN SHCS BLKZC w/Patch <i>Used on chairs starting 12/18/23</i>	6
24	102694	Dowel Pin, M5 X 24, Blk Zn	1
25	101781	M6 x 50mm Partial Thread BHCS Blk ZC	6
26	100797	M6 x 40 BHCS BLK ZC	1

Item Number	Part Number	Description	Quantity
27	101818	M4 x 10 FHCS BLKZC w/Patch	2
28	100658	M6 Nylock Nut Blk Zn	1
29	002035	Insert, Backrest, Non-Folding	1
31	110259	Adapter, Latch, Rigidizer Handle	1
35a	110264	Cross Tube, Rigidizer Handle, Small/Large	1
35b	110265	Cross Tube, Rigidizer Handle, Medium / X-Large	1
40	110290	SHCS, M4 x 0.7 x 18, CLS12.9, BLZ, NYL, DIN912	1
41	101185	M6 x 14 CLS8.8 DIN7984 Low SHCS BLKZC	1
42	110291	E-RING, M13-M18, DIN6799, ZC	1
43	100669	M5 x 10 BTN SHCS BLKZC w/Patch	2
44	102614	M5 Split Lock Washer BLK ZC	2
45	101766	M5 X 10 Cls12.9 Din912 Shcs Pln	2
46	101815	M8 x 50 BHCS Blk Zn	1
47	100659	M8 Nylock Nut Blk Zn	1