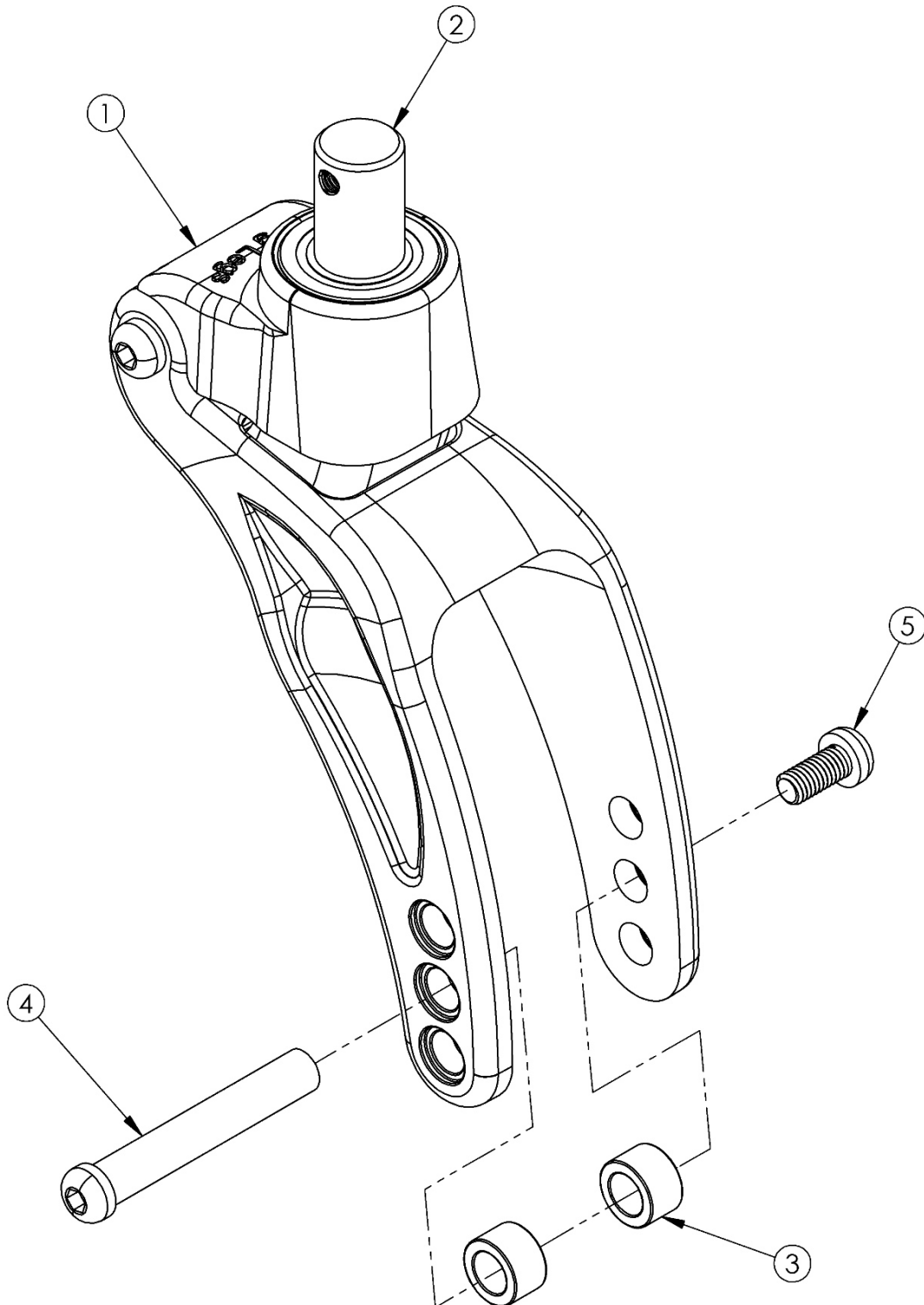


Rogue / Ethos Frog Legs II Suspension System (PHASE 2 Carbon Fork)



If retro-fitting to this fork on Ethos, new caster sleeves may be required and a new front base frame is required

| Item Number | Part Number | Description | Quantity |
|--------------------|--------------------|--|-----------------|
| 1-5 | 107186 | Frog Legs II Suspension System with Polymer, Bearing and Stem, Rogue/Ethos <i>Replaced 103192. Includes parts for one side.</i> | 1 |

Ethos Reference: Caster and Fork Changes

When making changes to fork style, fork size and/or caster size use the chart below to determine if and what additional parts are required. The reference chart identifies the caster sleeve used to square the casters post configuration change and the necessary fork hole position required to maintain front seat height.

NOTE: Ethos ships in its original configuration from Ki Mobility with a zero degree caster sleeve. The rear base frame of Ethos should always be parallel to the ground.

ANGLE OF CASTER SLEEVE REQUIRED

| FORK | | NEW OPTION | | | | | | | | | | | | | | | | | | | | |
|-----------------|---------------------|------------|------|------|------|--------------|--------------|--------------|--------------|----------|----------|----------|----------|--------------|--------------|--------------|--------------|---------------------|---------------------|---------------------|------|------|
| | | STD | STD | STD | STD | SINGLE SIDED | SINGLE SIDED | SINGLE SIDED | SINGLE SIDED | FROG LEG | FROG LEG | FROG LEG | FROG LEG | FROG PHASE 2 | FROG PHASE 2 | FROG PHASE 2 | FROG PHASE 2 | SINGLE SIDED XSHORT | SINGLE SIDED XSHORT | SINGLE SIDED XSHORT | | |
| CASTER DIAMETER | | 3 | 4 | 5 | 6 | 3 | 4 | 5 | 6 | 3 | 4 | 5 | 6 | 3 | 4 | 5 | 6 | 3 | 4 | 5 | | |
| OLD OPTION | STD | 3 | 0 7B | 0 7C | 2 7C | N/A | 2 7B | 2 7C | 3 7C | N/A | 3 7B | 3 7C | N/A | N/A | 3 7C | 3 7T | N/A | N/A | 1 7B | 1 7B | 3 7B | |
| | STD | 4 | 0 7B | 0 7C | 2 7C | N/A | 2 7B | 2 7C | 3 7C | N/A | 3 7B | 3 7C | N/A | N/A | 3 7C | 3 7T | N/A | N/A | 1 7B | 1 7B | 3 7B | |
| | STD | 5 | 2 7B | 2 7C | 0 7C | 3 7B | 0 7B | 0 7C | 2 7C | N/A | 2 7B | 2 7C | 3 7C | N/A | 3 7B | 3 7C | N/A | N/A | 3 7B | 1 7B | 1 7B | |
| | STD | 6 | N/A | 3 7B | 3 7C | 0 7B | 3 7B | 3 7C | 2 7C | 2 7B | 2 7B | 2 7C | 0 7C | 3 7B | 0 7B | 0 7C | 2 7C | N/A | N/A | N/A | 3 7B | |
| | SINGLE SIDED | 3 | 2 7B | 2 7C | 0 7C | 3 7B | 0 7B | 0 7C | 2 7C | N/A | 2 7B | 2 7C | 3 7C | N/A | 3 7B | 3 7C | N/A | N/A | 3 7B | 1 7B | 1 7B | |
| | SINGLE SIDED | 4 | 2 7B | 2 7C | 0 7C | 3 7B | 0 7B | 0 7C | 2 7C | N/A | 2 7B | 2 7C | 3 7C | N/A | 3 7B | 3 7C | N/A | N/A | 3 7B | 1 7B | 1 7B | |
| | SINGLE SIDED | 5 | 3 7B | 3 7C | 2 7C | 2 7B | 2 7B | 2 7C | 0 7C | 3 7B | 0 7B | 0 7C | 2 7C | N/A | 2 7B | 2 7C | 3 7C | N/A | N/A | 3 7B | 1 7B | |
| | SINGLE SIDED | 6 | N/A | N/A | 3 7B | 2 7B | N/A | 3 7B | 3 7C | 0 7B | 3 7B | 3 7C | 2 7C | 2 7B | 2 7B | 2 7C | 0 7C | 3 7B | N/A | N/A | N/A | |
| | FROG LEG | 3 | 3 7B | 3 7C | 2 7C | 2 7B | 2 7B | 2 7C | 0 7C | 3 7B | 0 7B | 0 7C | 2 7C | N/A | 2 7B | 2 7C | 3 7C | N/A | N/A | 3 7B | 1 7B | |
| | FROG LEG | 4 | 3 7B | 3 7C | 2 7C | 2 7B | 2 7B | 2 7C | 0 7C | 3 7B | 0 7B | 0 7C | 2 7C | N/A | 2 7B | 2 7C | 3 7C | N/A | N/A | 3 7B | 1 7B | |
| | FROG LEG | 5 | N/A | 3 7B | 3 7C | 0 7B | 3 7B | 3 7C | 2 7C | 2 7B | 2 7B | 2 7C | 0 7C | 3 7B | 0 7B | 0 7C | 2 7C | N/A | N/A | N/A | 3 7B | |
| | FROG LEG | 6 | N/A | N/A | N/A | 3 7B | N/A | N/A | 3 7B | 2 7B | N/A | 3 7B | 3 7C | 0 7B | 3 7B | 3 7C | 2 7C | 2 7B | N/A | N/A | N/A | |
| | FROG PHASE 2 | 3 | N/A | 3 7B | 3 7C | 0 7B | 3 7B | 3 7C | 2 7C | 2 7B | 2 7B | 2 7C | 0 7C | 3 7B | 0 7B | 0 7C | 2 7C | N/A | N/A | N/A | 3 7B | |
| | FROG PHASE 2 | 4 | N/A | 3 7B | 3 7C | 0 7B | 3 7B | 3 7C | 2 7C | 2 7B | 2 7B | 2 7C | 0 7C | 3 7B | 0 7B | 0 7C | 2 7C | N/A | N/A | N/A | 3 7B | |
| | FROG PHASE 2 | 5 | N/A | N/A | 3 7B | 2 7B | N/A | 3 7B | 3 7C | 0 7B | 3 7B | 3 7C | 2 7C | 2 7B | 2 7B | 2 7C | 0 7C | 3 7B | N/A | N/A | N/A | |
| | FROG PHASE 2 | 6 | N/A | N/A | N/A | N/A | N/A | N/A | N/A | 3 7B | N/A | N/A | 3 7B | 2 7B | N/A | 3 7B | 3 7C | 0 7B | N/A | N/A | N/A | |
| | SINGLE SIDED XSHORT | 3 | 1 7B | 1 7C | 3 7C | N/A | 3 7B | 3 7B | N/A | N/A | 3 7C | 3 7T | N/A | N/A | N/A | N/A | N/A | N/A | N/A | 0 7B | 2 7B | 3 7B |
| | SINGLE SIDED XSHORT | 4 | 1 7B | 1 7C | 1 7C | N/A | 1 7B | 1 7B | 3 7B | N/A | 3 7B | N/A | N/A | N/A | 3 7C | 3 7T | N/A | N/A | 2 7B | 0 7B | 2 7B | |
| | SINGLE SIDED XSHORT | 5 | 3 7B | 3 7C | 1 7C | 3 7B | 1 7B | 1 7B | 1 7B | N/A | 1 7B | 1 7C | 3 7C | N/A | 3 7B | 3 7C | N/A | N/A | 3 7B | 2 7B | 0 7B | |

| Key | |
|-----|--|
| N/A | Change cannot be accommodated using just a caster sleeve. Please contact customer service to process this order. |
| B | Bottom fork hole. |
| C | Center fork hole. |
| T | Top fork hole. |