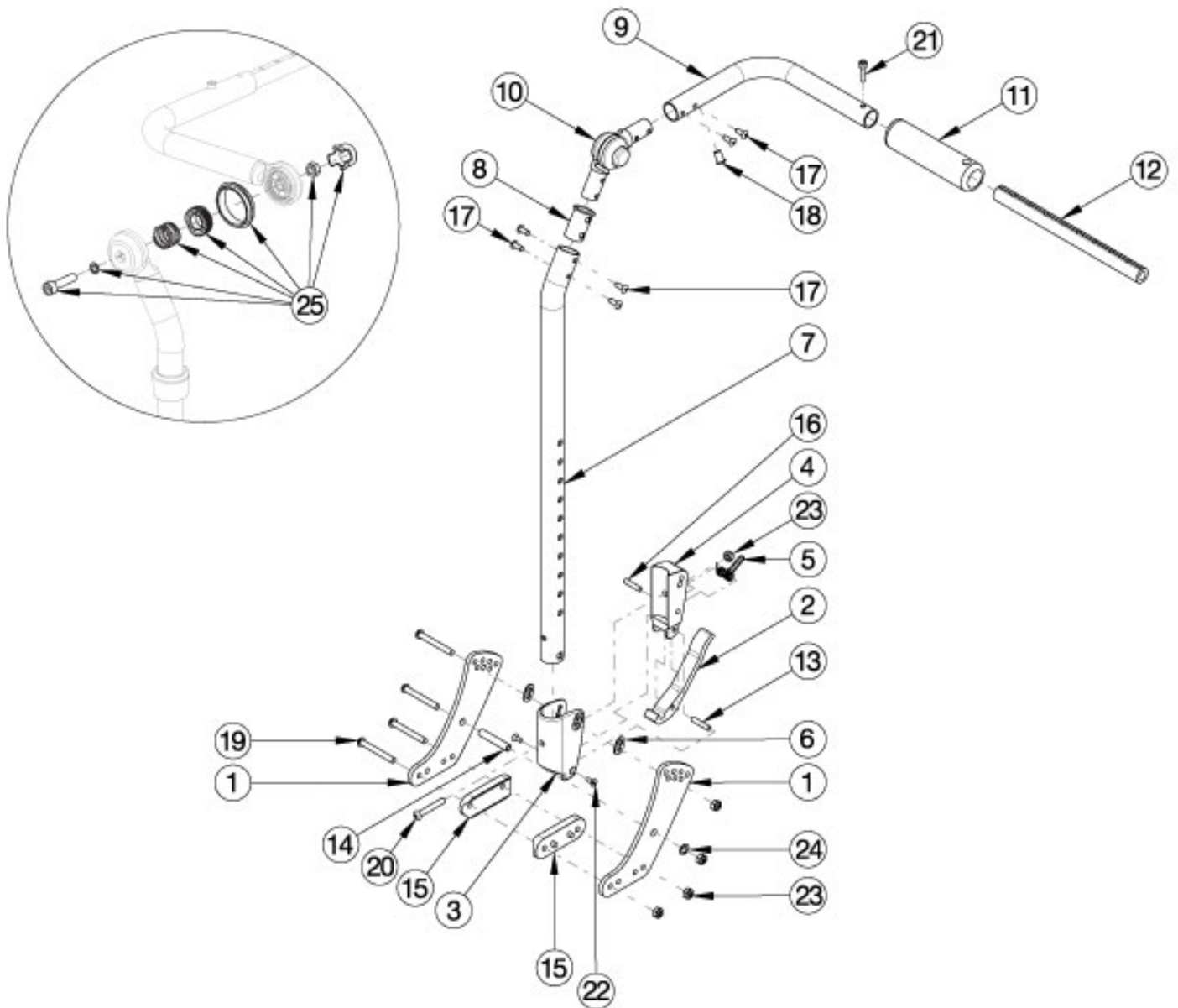


Flip for x:panda Fixed Height with Adjustable Handle Backrest



Item Number	Part Number	Description	Quantity
1, 6, 14, 15, 19, 23, 24	121068	Backrest Hardware Kit, One Side, Flip for x:panda	1
2, 3-5, 7a, 8, 9a, 10, 11, 13, 16-18, 20, 22, 23	121069	Fixed Height with Adjustable Handle Backrest Assembly, Short, Left, Flip for x:panda	1
2, 3-5, 7a, 8, 9b, 10, 11, 13, 16-18, 20, 22, 23	121070	Fixed Height with Adjustable Handle Backrest Assembly, Short, Right, Flip for x:panda	1

Item Number	Part Number	Description	Quantity
2, 3-5, 7b, 8, 9a, 10, 11, 13, 16-18, 20, 22, 23	121071	Fixed Height with Adjustable Handle Backrest Assembly, Tall, Left, Flip for x:panda	1
2, 3-5, 7b, 8, 9b, 10, 11, 13, 16-18, 20, 22, 23	121072	Fixed Height with Adjustable Handle Backrest Assembly, Tall, Right, Flip for x:panda	1
1, 2, 3-6, 7a, 8, 9a, 10, 11, 13-20, 22-24	121073	Fixed Height with Adjustable Handle Backrest Assembly with Hardware, Short, Left, Flip for x:panda	1
1, 2, 3-6, 7a, 8, 9b, 10, 11, 13-20, 22-24	121074	Fixed Height with Adjustable Handle Backrest Assembly with Hardware, Short, Right, Flip for x:panda	1
1, 2, 3-6, 7b, 8, 9a, 10, 11, 13-20, 22-24	121075	Fixed Height with Adjustable Handle Backrest Assembly with Hardware, Tall, Left, Flip for x:panda	1
1, 2, 3-6, 7b, 8, 9b, 10, 11, 13-20, 22-24	121076	Fixed Height with Adjustable Handle Backrest Assembly with Hardware, Tall, Right, Flip for x:panda	1
12, 21	503107	Growth Strut Assembly Short, Focus/Flip	1
3, 6	503834	Cover Plate, Latch Insert Kit	2
1	112488	Standard Back Plate, CR45/Flip XPA	2
2	001893	Latch Lever, Backrest	2
4	001895	Latch Insert, Folding Backrest	2
5	001896	Spring, Backrest Latch	2
6	001897	Washer, Dual, PSA	4
12	002578	Growth Strut, Stroller, Short	1
13	002513	Threaded Barrel, 5mm OD x M4	2
14	002738	Spacer .313 OD x .243 ID x 1.68 long	2
15	112491	Saddle, Dual, 1" x 2.0SP	4
16	102694	Dowel Pin, M5 X 24, Blk Zn	2
19	101781	M6 x 50mm Partial Thread BHCS Blk ZC	8
20	100797	M6 x 40 BHCS BLK ZC	2
21	101843	M5 x 20 SHCS Blk Zn	2
22	101818	M4 x 10 FHCS BLKZC w/Patch	4
23	100658	M6 Nylock Nut Blk Zn	10
24	101861	Nylon Washer 5/16 x 1/2 x .03	2

Item Number	Part Number	Description	Quantity
25	110524	Locking Hinge Button Assembly with Instruction <i>This kit contains the contents inside callout # 10.</i>	1