



CAPTAIN SEAT HANGER RECEIVER



Please read these instructions carefully before beginning the assembly. Failure to understand and follow assembly instructions may result in injury to technician and/or end user and may void the warranty. If you have any questions call Sunrise Medical Technical Support at +1 (800) 333-4000.

Parts:

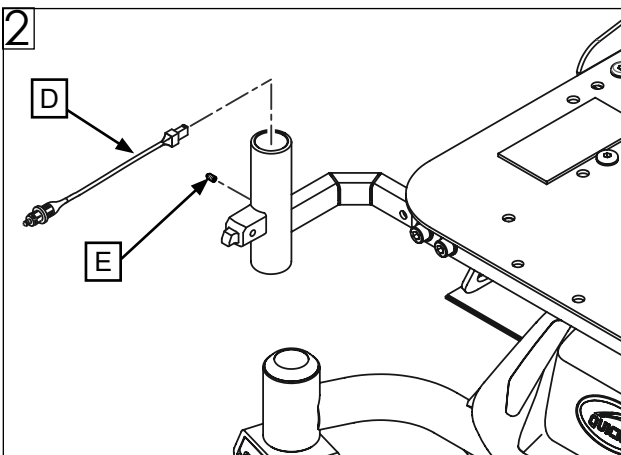
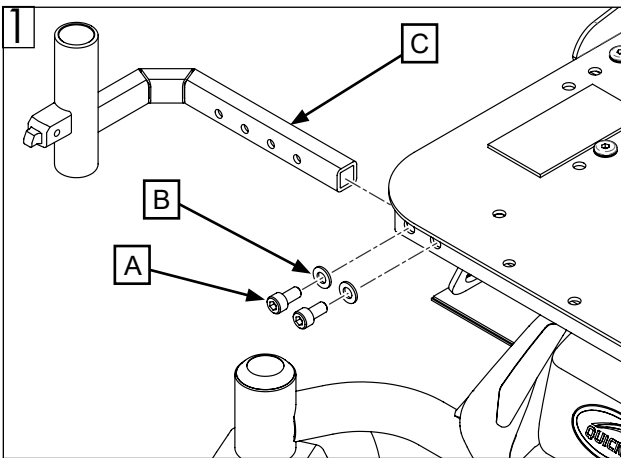
- 1 ea Receiver assembly RH
- 1 ea Receiver assembly LH
- 2 ea Wire harness
(power ELR hanger only)

Required tools:

1. 6mm hex key

A. Hanger receiver width adjustment

1. Remove swing-away legrest.
2. Remove screws (A) and washers (B). (Fig. 1)
3. Slide receiver (C) inward or outward from seat frame to desired location. (Fig. 1)
4. Reattach screws (A) and washers (B). (Fig. 1)
5. For power ELR hangers, insert the small end of the wire harness (D) into the top of the hanger receiver. Securely tighten the set screw (E) with a 3mm hex key to secure the harness to the receiver. Torque to 1.5-2.0 Nm [6-8 in-lbs]. (Fig. 2)
6. Reattach swing-away legrest.
7. Repeat steps 1-6 on opposite side of chair.



⚠️ DEALER/TECHNICIAN WARNING

Attention dealers and qualified technicians, do not operate or service this device without first reading the owners manual. If you do not understand the instructions and warnings in the owners manual please contact the Quickie Technical Service Department before operating and/or servicing the Quickie device. Failure to do so may result in damage and/or injury.

Find more information and important warnings see the wheelchair owner's manual or at: www.SunriseMedical.com.

Sunrise Medical 2842 N. Business Park Ave Fresno, CA 93727 USA

In Canada (800) 263-3390



Customer service: +1(800) 333-4000
or visit www.SunriseMedical.com

© 2021 Sunrise Medical (US) LLC
11/2021 255307 Rev. A

Page 1 of 1