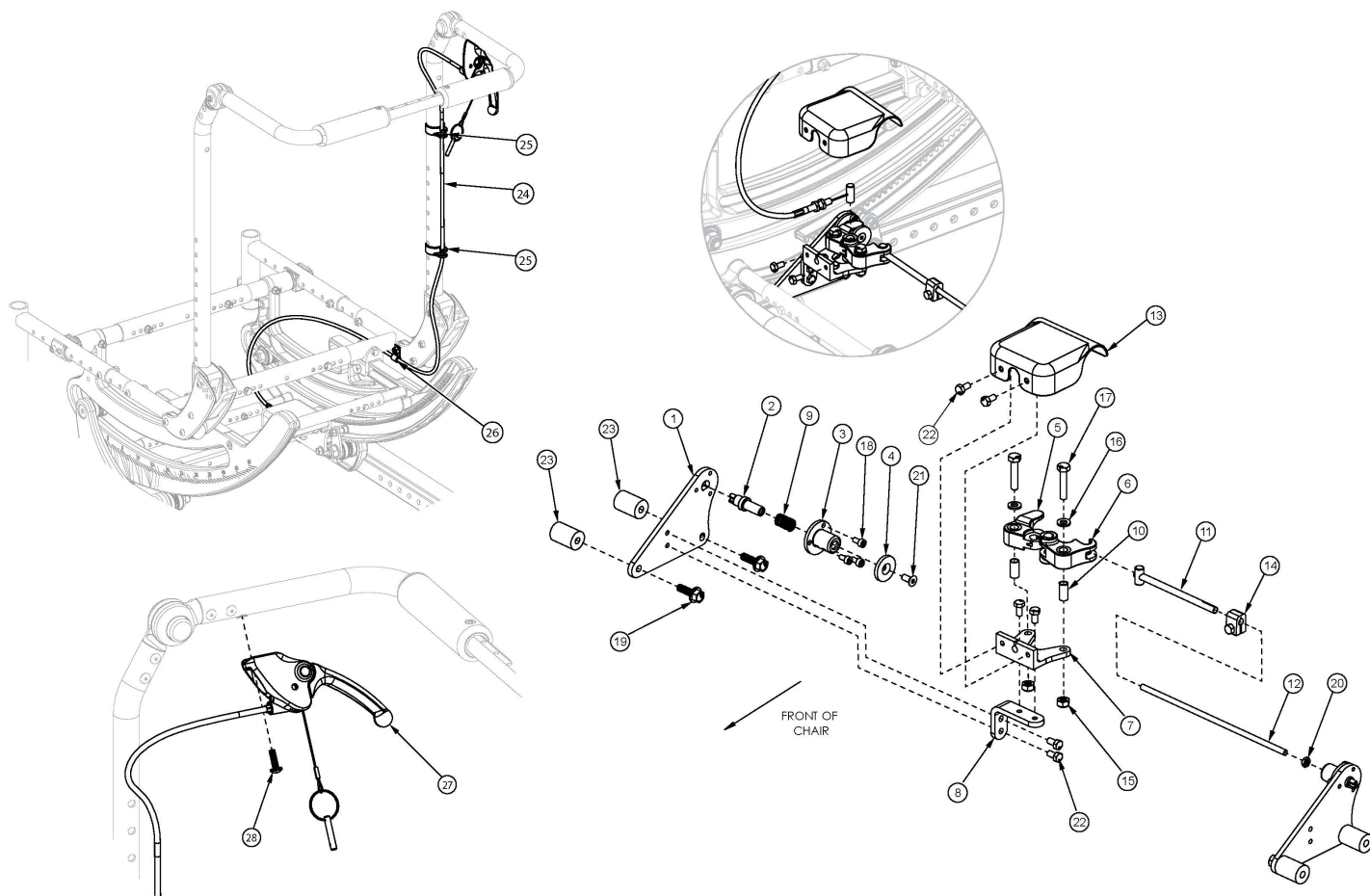


Focus CR Hand Tilt Mechanism Fixed Height with Adjustable Handle Back



This design effective starting with serial numbers FCR0026599 and FCHD002333. If serial number is prior to FCR0026599 and FCHD002333 new back cane assemblies are required in addition to the hand tilt mechanism. If drum brake present see that page for trigger replacements. If drum brake present, see the drum brake page for replacement parts.

| Item Number | Part Number | Description | Quantity |
|------------------------------|-------------|---|----------|
| 1-11, 12a, 13-18, 19a, 20-22 | 506246 | Single Tilt Hand/Foot Kit, Right, Small Width Range, Focus <i>For complete tilt mechanism, select appropriate Hand Tilt Cable / Trigger Kit in addition to this kit</i> | 1 |
| 1-11, 12b, 13-18, 19a, 20-22 | 506247 | Single Tilt Hand/Foot Kit, Right, Medium Width Range, Focus <i>For complete tilt mechanism, select appropriate Hand Tilt Cable / Trigger Kit in addition to this kit</i> | 1 |
| 1-11, 12c, 13-18, 19a, 20-22 | 506248 | Single Tilt Hand/Foot Kit, Right, Large Width Range, Focus <i>For complete tilt mechanism, select appropriate Hand Tilt Cable / Trigger Kit in addition to this kit</i> | 1 |
| 1-11, 12a, 13-18, 19a, 20-22 | 506266 | Single Tilt Hand/Foot Kit, Left, Small Width Range, Focus | 1 |

| Item Number | Part Number | Description | Quantity |
|------------------------------|-------------|--|----------|
| | | <i>For complete tilt mechanism, select appropriate Hand Tilt Cable / Trigger Kit in addition to this kit</i> | |
| 1-11, 12b, 13-18, 19a, 20-22 | 506267 | Single Tilt Hand/Foot Kit, Left, Medium Width Range, Focus <i>For complete tilt mechanism, select appropriate Hand Tilt Cable / Trigger Kit in addition to this kit</i> | 1 |
| 1-11, 12c, 13-18, 19a, 20-22 | 506268 | Single Tilt Hand/Foot Kit, Left, Large Width Range, Focus <i>For complete tilt mechanism, select appropriate Hand Tilt Cable / Trigger Kit in addition to this kit</i> | 1 |
| 1-11, 12a, 13-18, 19b, 20-23 | 506249 | Single Tilt Hand/Foot Kit, Right, Small Width Range, Heavy Duty, Focus <i>For complete tilt mechanism, select appropriate Hand Tilt Cable / Trigger Kit in addition to this kit</i> | 1 |
| 1-11, 12b, 13-18, 19b, 20-23 | 506250 | Single Tilt Hand/Foot Kit, Right, Medium Width Range, Heavy Duty, Focus <i>For complete tilt mechanism, select appropriate Hand Tilt Cable / Trigger Kit in addition to this kit</i> | 1 |
| 1-11, 12c, 13-18, 19b, 20-23 | 506251 | Single Tilt Hand/Foot Kit, Right, Large Width Range, Heavy Duty, Focus <i>For complete tilt mechanism, select appropriate Hand Tilt Cable / Trigger Kit in addition to this kit</i> | 1 |
| 1-11, 12d, 13-18, 19b, 20-23 | 114279 | Single Tilt Hand/Foot Kit, Right, X-Large Width Range, Heavy Duty, Focus <i>For complete tilt mechanism, select appropriate Hand Tilt Cable / Trigger Kit in addition to this kit</i> | 1 |
| 1-11, 12a, 13-18, 19b, 20-23 | 506269 | Single Tilt Hand/Foot Kit, Left, Small Width Range, Heavy Duty, Focus <i>For complete tilt mechanism, select appropriate Hand Tilt Cable / Trigger Kit in addition to this kit</i> | 1 |
| 1-11, 12b, 13-18, 19b, 20-23 | 506270 | Single Tilt Hand/Foot Kit, Left, Medium Width Range, Heavy Duty, Focus <i>For complete tilt mechanism, select appropriate Hand Tilt Cable / Trigger Kit in addition to this kit</i> | 1 |
| 1-11, 12c, 13-18, 19b, 20-23 | 506271 | Single Tilt Hand/Foot Kit, Left, Large Width Range, Heavy Duty, Focus <i>For complete tilt mechanism, select appropriate Hand Tilt Cable / Trigger Kit in addition to this kit</i> | 1 |
| 1-11, 12d, 13-18, 19b, 20-23 | 114280 | Single Tilt Hand/Foot Kit, Left, X-Large Width Range, Heavy Duty, Focus <i>For complete tilt mechanism, select appropriate Hand Tilt Cable / Trigger Kit in addition to this kit</i> | 1 |
| 11, 12a, 14, 20 | 506263 | Linkage Rod Assembly,Tilt, Small <i>Used with Small Frame Width Range</i> | 1 |
| 11, 12b, 14, 20 | 506264 | Linkage Rod Assembly,Tilt, Medium <i>Used with Medium Frame Width Range</i> | 1 |
| 11, 12c, 14, 20 | 506265 | Linkage Rod Assembly,Tilt, Large <i>Used with Large Frame Width Range</i> | 1 |
| 11, 12d, 14, 20 | 114281 | Linkage Rod Assembly, Tilt, X-Large <i>Used with X-Large Frame Width Range</i> | 1 |
| 24a, 25-28 | 506786 | Hand Tilt Cable/Trigger Kit with XL Cable, Fixed Height w/Adjustable Handle, Focus <i>Used with Short Fixed Height with Adjustable Handle Back Post</i> | 1 |

| Item Number | Part Number | Description | Quantity |
|---------------------|-------------|--|----------|
| 24b, 25-28 | 506787 | Hand Tilt Cable/Trigger Kit with XXL Cable, Fixed Height w/Adjustable Handle, Focus <i>Used with Tall Fixed Height with Adjustable Handle Back Post</i> | 1 |
| 1 | 004280 | Mount Plate, Tilt Lock | 2 |
| 2 | 004281 | Pin, Plunger, Tilt Lock | 2 |
| 3 | 004282 | Housing, Plunger, Tilt Lock | 2 |
| 4 | 004283 | Thrust Washer, Tilt Lock | 1 |
| 1-4, 9, 18, 19a | 506259 | Tilt Lock Mechanism Single Hand/Foot, Slave Right | 1 |
| 1-4, 9, 18, 19a | 506260 | Tilt Lock Mechanism Single Hand/Foot, Slave Left | 1 |
| 1-4, 9, 18, 19b, 23 | 506261 | Tilt Lock Mechanism Single Hand/Foot, Heavy Duty, Slave Right | 1 |
| 1-4, 9, 18, 19b, 23 | 506262 | Tilt Lock Mechanism Single Hand/Foot, Heavy Duty, Slave Left | 1 |
| 5 | 004284 | Cam Lever, Drive, Tilt Lock | 1 |
| 6 | 004285 | Cam Lever, Slave, Tilt Lock | 1 |
| 7 | 004286 | Mount, Linkage, Dual | 1 |
| 8 | 004289 | Bracket, Mount, Tilt Lock | 1 |
| 9 | 004290 | Spring, Comp, .42OD x 1.0L x .038W | 2 |
| 10 | 004291 | Bushing, Pivot, Tilt Lock | 2 |
| 11 | 004294 | Tube Assembly, Slave, Tilt Lock | 1 |
| 12a | 004295 | Rod, Slave, Small, 4.96" <i>Used with Small Frame Width Range</i> | 1 |
| 12b | 004296 | Rod, Slave, Medium, 6.96" <i>Used with Medium Frame Width Range</i> | 1 |
| 12c | 004297 | Rod, Slave, Large, 8.96" <i>Used with Large Frame Width Range</i> | 1 |
| 12d | 112564 | Rod, Slave, X-Large, 10.96" <i>Used with X-Large Frame Width Range</i> | 1 |
| 13 | 004298 | Cover, Tilt Lock | 1 |
| 14 | 004308 | Shaft Clamp, 6mm x M5 | 1 |
| 15 | 100658 | M6 Nylock Nut Blk Zn | 2 |
| 16 | 100746 | M6 Flat Washer Blk Zn | 2 |

| Item Number | Part Number | Description | Quantity |
|-------------|-------------|---|----------|
| 17 | 101824 | M6 X 30 Hhcs Blk Zn | 2 |
| 18 | 102800 | M4 x 8mm SHCS Blk Zn | 6 |
| 19a | 103510 | M6 x 1 x 20 HHCS SFLG CLS8.8 Blk Zn DIN6921 <i>Used with Standard Weight Capacity</i> | 4 |
| 19b | 103511 | M6 x 1 x 45 HHCS SFLG CLS8.8 Blk Zn DIN6921 <i>Used with Heavy Duty Option</i> | 4 |
| 20 | 103514 | M5 x 0.8 Jam Nut BLK ZN DIN439B | 1 |
| 21 | 103522 | M5 x 0.8 x 12 FHCS CLS 10.9 Nyl Blk Zn DIN7991 | 1 |
| 22 | 200427 | M5 x 10 CLS8.8 HHCS ZC w/Patch DIN933 | 6 |
| 23 | 001405 | Spacer, .69OD x .24ID x .1.01Lg <i>Used with Heavy Duty Option</i> | 4 |
| 24a | 004303 | Cable, Tilt, XL <i>Used with Short Fixed Height with Adjustable Handle</i> | 1 |
| 24b | 004304 | Cable, Tilt, XXL <i>Used with Tall Fixed Height with Adjustable Handle</i> | 1 |
| 25 | 001117 | Cable Clip 1" | 2 |
| 26 | 001239 | P-Clip 3/16" | 1 |
| 27 | 003492 | Lever Assembly, Straight | 1 |
| 28 | 100734 | M5 x 16 PHMS ZC | 1 |