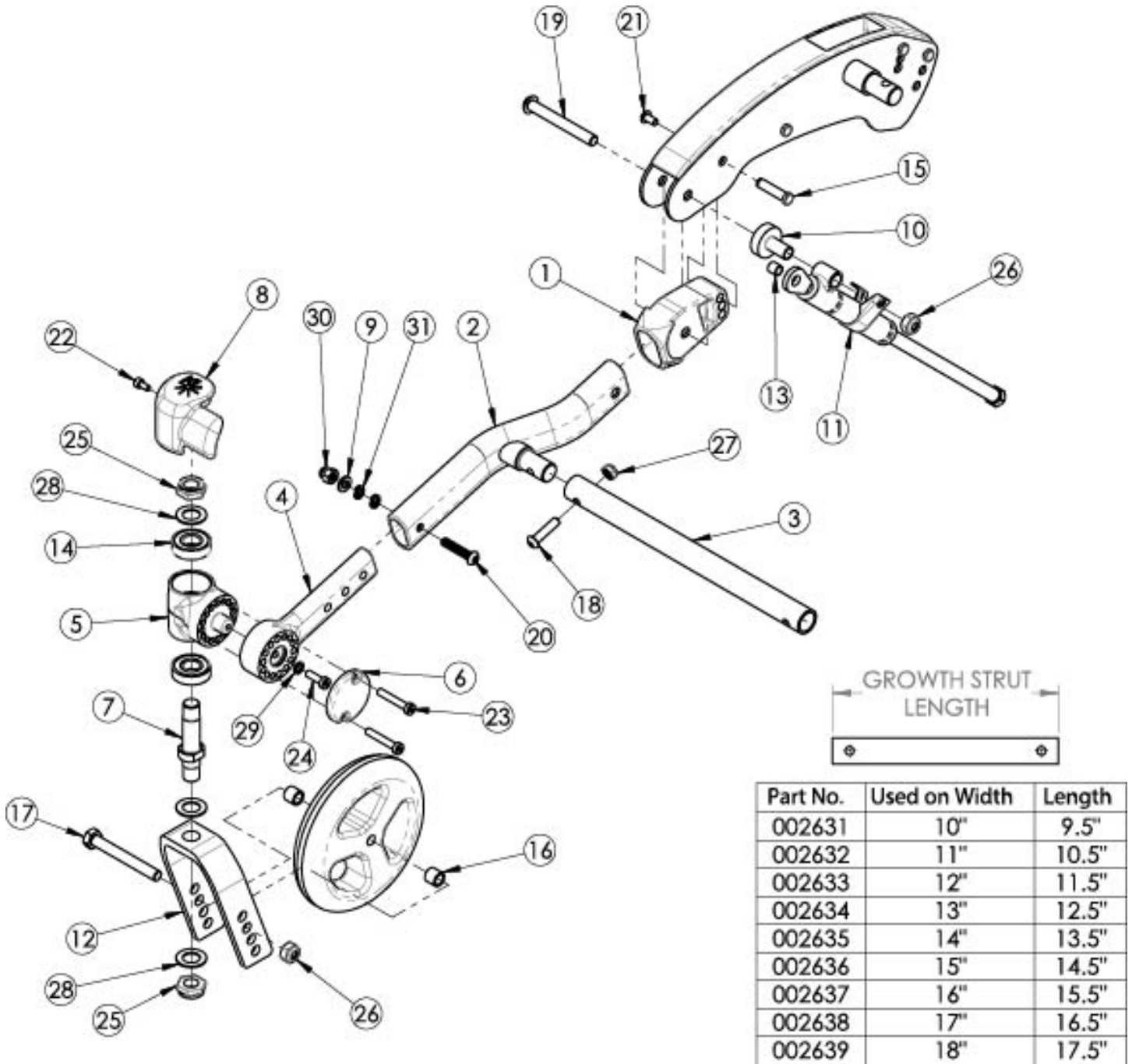


# (Discontinued) Flip Caster Arm



Discontinued 5/1/2024

Item Number	Part Number	Description	Quantity
7, 12a, 25, 28	502802	Fork Assembly 5" FLIP	1
7, 12b, 25, 28	502803	Fork Assembly 6" FLIP	1
7, 12c, 25, 28	502804	Fork Assembly 6" Wide FLIP	1

Item Number	Part Number	Description	Quantity
7, 12d, 25, 28	502805	Fork Assembly 7" FLIP	1
7, 12e, 25, 28	502806	Fork Assembly 7" Wide FLIP	1
10, 11a, 13, 19, 26	503213	Mechlock Replacement Kit, 45° Right <i>Used with Standard Axle Plate</i>	1
10, 11b, 13, 19, 26	503214	Mechlock Replacement Kit, 45° Left <i>Used with Standard Axle Plate</i>	1
10, 11a, 11b, 13, 19, 26	502797	Mechlock Replacement Kit, 45° PAIR FLIP <i>Used with Standard Axle Plate</i>	1
10, 11c, 13, 19, 26	503215	Mechlock Replacement Kit, 35° Right <i>Used with Self Propel Axle Plate</i>	1
10, 11d, 13, 19, 26	503216	Mechlock Replacement Kit, 35° Left <i>Used with Self Propel Axle Plate</i>	1
10, 11c, 11d, 13, 19, 26	502798	Mechlock Replacement Kit, 35° PAIR FLIP <i>Used with Self Propel Axle Plate</i>	1
16a, 17a, 26	502653	Caster Attachment Hardware Kit CAT/FCS	1
16b, 17b, 26	502654	Caster Attachment Hardware Kit for 6" and 7" Wide Fork, CAT/FCS	1
1, 2	115608_ _ _	Front Frame Tube Weldment w/Adjuster, Flip, Left	1
1, 2	115609_ _ _	Front Frame Tube Weldment w/Adjuster, Flip, Right	1
3a	002631	Frame Growth Strut 9.5"	1
3b	002632	Frame Growth Strut 10.5"	1
3c	002633	Frame Growth Strut 11.5"	1
3d	002634	Frame Growth Strut 12.5"	1
3e	002635	Frame Growth Strut 13.5"	1
3f	002636	Frame Growth Strut 14.5"	1
3g	002637	Frame Growth Strut 15.5"	1
3h	002638	Frame Growth Strut 16.5"	1
3i	002639	Frame Growth Strut 17.5"	1
7	501208	Caster Stem, Ped Tilt	1
8a	002651	Wear Pad, Caster, Right	1
8b	002652	Wear Pad, Caster, Left	1

Item Number	Part Number	Description	Quantity
9	100746	M6 Flat Washer Blk Zn <i>For hardware used with the Transit Option, see Little Wave Flip Transit System Page</i>	1
10	001865	Spacer, Mechlock	1
11a	001861	Mechlock, 158mm, Right <i>Used with Standard Axle Plate</i>	1
11b	001862	Mechlock, 158mm, Left <i>Used with Standard Axle Plate</i>	1
11c	001863	Mechlock, 129mm, Right <i>Used with Self Propel Axle Plate</i>	1
11d	001864	Mechlock, 129mm, Left <i>Used with Self Propel Axle Plate</i>	1
12a	501209	Caster Fork 5" Flip	1
12b	501210	Caster Fork 6" Flip	1
12c	501211	Caster Fork 6" Wide Flip	1
12d	501212	Caster Fork 7" Flip	1
12e	501213	Caster Fork 7" Wide Flip	1
13	001156	Pivot Bushing Tilt	2
15	000987	Threaded Fastener	1
16a	100792	Caster Spacer D8 x D12 x 10mm / Close Mount Handrim Spacer <i>Used with all casters except 6x2 and 8x2</i>	2
16b	001246	Caster Spacer Black 6 x 2 Poly .472ODX.319IDX.370LG <i>Only used with 6" x 2" casters</i>	2
17a	101829	M8 x 65 HHCS Blk Zn	1
17b	101831	M8 x 80 HHCS Blk Zn <i>Used with wide forks</i>	1
18	101593	M6 x 25 BTN SHCS BLKZC	1
19	102797	M8 x 65, BHCS, Blk Zn	1
20	102625	M6 X 30 BHCS BLK ZC <i>For hardware used with the Transit Option, see Little Wave Flip Transit System Page</i>	1
21	100669	M5 x 10 BTN SHCS BLKZC w/Patch	1
22	102800	M4 x 8mm SHCS Blk Zn	1

Item Number	Part Number	Description	Quantity
24	102801	M5 x 16, Low SHCS, Blk Zn	1
25	100529	M12 x 1.25mm Lock Nut Black	2
26	100659	M8 Nylock Nut Blk Zn	2
27	100658	M6 Nylock Nut Blk Zn	1
28	100682	Washer 1/2" .518 x .875 x .047 F/W Black Zinc	3
29	102614	M5 Split Lock Washer BLK ZC	1
30	100558	M6 Nyl Ins Domed Cap L/N Zc <i>For hardware used with the Transit Option, see Little Wave Flip Transit System Page</i>	1
31	102810	M6 Lockwasher, Hi-Collar, ZC <i>For hardware used with the Transit Option, see Little Wave Flip Transit System Page</i>	2