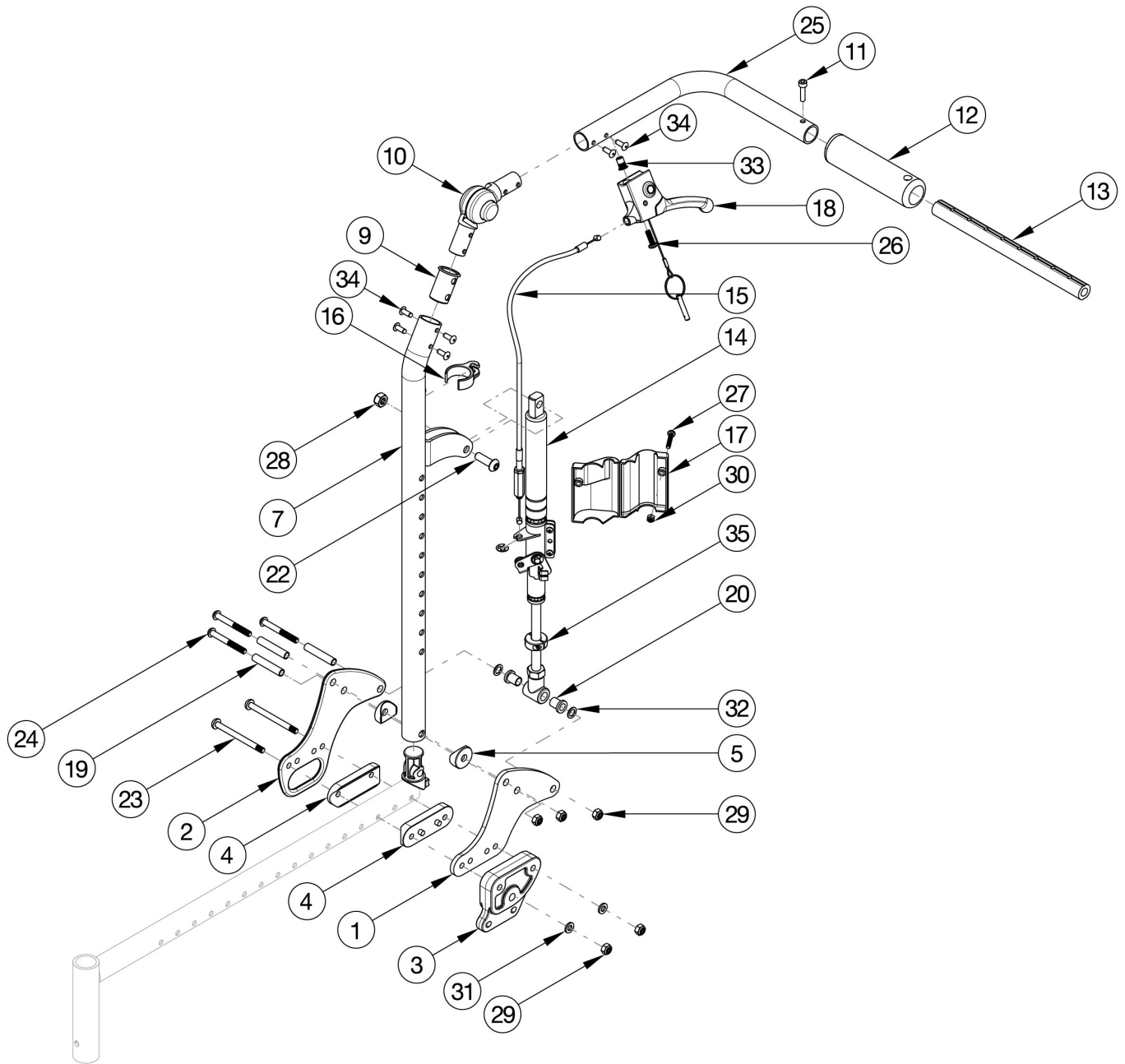


# CR45 Reclining Backrest



*If changing from another style backrest and the Hand Tilt is present, a new Hand Tilt Cable / Trigger Kit may be required. When Seat Depth is 21" or 22", the Back Frame Extension is needed for the Reclining Backrest. Back Frame Extension is located on the CR45 Base Frame page.*

| Item Number   | Part Number | Description   | Quantity |
|---|-------------|---|----------|
| 1, 4 - 7, 9 - 10,<br>11a, 11b, 12,<br>13a, 14a, 14b,<br>15a, 16, 17a,<br>17b, 18 - 22,<br>24 - 34       | 116518      | Recline Back Kit, Short, 14-20" Width, Standard Gas Spring, CR45<br><br><i>Kit includes parts for both sides</i>          | 1        |
| 1, 4 - 7, 9 - 10,<br>11a, 11b, 12,<br>13b, 14a, 14b,<br>15a, 16, 17a,<br>17b, 18 - 22,<br>24 - 34       | 116519      | Recline Back Kit, Short, 16-22" Width, Standard Gas Spring, CR45<br><br><i>Kit includes parts for both sides</i>          | 1        |
| 1, 4 - 7, 9 - 10,<br>11a, 11b, 12,<br>13a, 14a, 14b,<br>15b, 16, 17a,<br>17b, 18 - 22,<br>24 - 34       | 116520      | Recline Back Kit, Tall, 14-20" Width, Standard Gas Spring, CR45<br><br><i>Kit includes parts for both sides</i>           | 1        |
| 1, 4 - 7, 9 - 10,<br>11a, 11b, 12,<br>13b, 14a, 14b,<br>15b, 16, 17a,<br>17b, 18 - 22,<br>24 - 34       | 116521      | Recline Back Kit, Tall, 16-22" Width, Standard Gas Spring, CR45<br><br><i>Kit includes parts for both sides</i>           | 1        |
| 1, 2, 4 - 5, 7, 9<br>- 10, 11a, 11b,<br>12, 13a, 14a,<br>14b, 15a, 16,<br>17a, 17b, 19 -<br>22, 24- 34, | 116522      | Recline Back Kit, Short, 14-20" Width, Standard Gas Spring, Transit, CR45<br><br><i>Kit includes parts for both sides</i> | 1        |
| 1, 2, 4 - 5, 7, 9<br>- 10, 11a, 11b,<br>12, 13b, 14a,<br>14b, 15a, 16,<br>17a, 17b, 19 -<br>22, 24- 34, | 116523      | Recline Back Kit, Short, 16-22" Width, Standard Gas Spring, Transit, CR45<br><br><i>Kit includes parts for both sides</i> | 1        |
| 1, 2, 4 - 5, 7, 9<br>- 10, 11a, 11b,<br>12, 13a, 14a,<br>14b, 15b, 16,<br>17a, 17b, 19 -<br>22, 24- 34, | 116524      | Recline Back Kit, Tall, 14-20" Width, Standard Gas Spring, Transit, CR45<br><br><i>Kit includes parts for both sides</i>  | 1        |
| 1, 2, 4 - 5, 7, 9<br>- 10, 11a, 11b,<br>12, 13b, 14a,<br>14b, 15b, 16,<br>17a, 17b, 19 -<br>22, 24- 34, | 116525      | Recline Back Kit, Tall, 16-22" Width, Standard Gas Spring, Transit, CR45<br><br><i>Kit includes parts for both sides</i>  | 1        |

| Item Number  | Part Number | Description  | Quantity |
|--|-------------|--|----------|
| 1, 4 - 7, 9 - 10,<br>11a, 11b, 12,<br>13a, 14c, 14d,<br>15a, 16, 17a,<br>17b, 19 - 22,<br>24 - 34    | 116530      | Recline Back Kit, Short, 14-20" Width, Heavy<br>Duty Gas Spring<br><br><i>Kit includes parts for both sides</i>          | 1        |
| 1, 4 - 7, 9 - 10,<br>11a, 11b, 12,<br>13b, 14c, 14d,<br>15a, 16, 17a,<br>17b, 19 - 22,<br>24 - 34    | 116531      | Recline Back Kit, Short, 16-22" Width, Heavy<br>Duty Gas Spring<br><br><i>Kit includes parts for both sides</i>          | 1        |
| 1, 4 - 7, 9 - 10,<br>11a, 11b, 12,<br>13a, 14c, 14d,<br>15b, 16, 17a,<br>17b, 19 - 22,<br>24 - 34    | 116532      | Recline Back Kit, Tall, 14-20" Width, Heavy Duty<br>Gas Spring<br><br><i>Kit includes parts for both sides</i>           | 1        |
| 1, 4 - 7, 9 - 10,<br>11a, 11b, 12,<br>13b, 14c, 14d,<br>15b, 16, 17a,<br>17b, 19 - 22,<br>24 - 34    | 116533      | Recline Back Kit, Tall, 16-22" Width, Heavy Duty<br>Gas Spring<br><br><i>Kit includes parts for both sides</i>           | 1        |
| 1, 2, 4 - 7, 9 -<br>10, 11a, 11b,<br>12, 13a, 14c,<br>14d, 15a, 16,<br>17a, 17b, 19 -<br>22, 24 - 34 | 116534      | Recline Back Kit, Short, 14-20" Width, Heavy<br>Duty Gas Spring, Transit<br><br><i>Kit includes parts for both sides</i> | 1        |
| 1, 2, 4 - 7, 9 -<br>10, 11a, 11b,<br>12, 13b, 14c,<br>14d, 15a, 16,<br>17a, 17b, 19 -<br>22, 24 - 34 | 116535      | Recline Back Kit, Short, 16-22" Width, Heavy<br>Duty Gas Spring, Transit<br><br><i>Kit includes parts for both sides</i> | 1        |
| 1, 2, 4 - 7, 9 -<br>10, 11a, 11b,<br>12, 13a, 14c,<br>14d, 15b, 16,<br>17a, 17b, 19 -<br>22, 24 - 34 | 116536      | Recline Back Kit, Tall, 14-20" Width, Heavy Duty<br>Gas Spring, Transit<br><br><i>Kit includes parts for both sides</i>  | 1        |
| 1, 2, 4 - 7, 9 -<br>10, 11a, 11b,<br>12, 13b, 14c,<br>14d, 15b, 16,<br>17a, 17b, 19 -<br>22, 24 - 34 | 116537      | Recline Back Kit, Tall, 16-22" Width, Heavy Duty<br>Gas Spring, Transit<br><br><i>Kit includes parts for both sides</i>  | 1        |
| 7, 9 - 10, 11a,<br>12, 33 - 34   | 506760      | Recline Back Tube Subassembly, Short, Right  | 1        |
| 7, 9 - 10, 11b,<br>12, 33 - 34   | 506761      | Recline Back Tube Subassembly, Short, Left   | 1        |

| Item Number                           | Part Number | Description  | Quantity |
|---------------------------------------|-------------|--|----------|
| 8 - 10, 11a, 12, 33 - 34              | 506762      | Recline Back Tube Subassembly, Tall, Right                     | 1        |
| 8 - 10, 11b, 12, 33 - 34              | 506763      | Recline Back Tube Subassembly, Tall, Left                      | 1        |
| 1, 4 - 5, 19 - 20, 24, 29, 31 - 32    | 116526      | Reclining Backrest Hardware Assembly (One Side), Std, CR45     | 1        |
| 1, 2, 4 - 5, 19 - 20, 24, 29, 31 - 32 | 116527      | Reclining Backrest Hardware Assembly (One Side), Transit, CR45 | 1        |
| 1                                     | 112493      | Recline Back Plate, CR45                                       | 1        |
| 2                                     | 112494      | Transit Recline Back Plate, CR45                               | 1        |
| 3                                     | 112492      | Backrest Adapter Plate, CR45                                   | 1        |
| 4                                     | 112491      | Saddle, Dual, 1" x 2.0SP                                       | 2        |
| 5                                     | 001271      | 1" Saddle, .323 Hole   | 1        |
| 6                                     | 001267      | Plug, Back Tube, Lower, Recline                                | 1        |
| 12                                    | 001098      | Foam Push Handle Tilt  | 1        |
| 13a                                   | 002578      | Growth Strut, Stroller, Short                                  | 1        |
| 13b                                   | 002579      | Growth Strut, Stroller, Long                                   | 1        |
| 14a                                   | 001264      | Gas Spring Lock 92mm 20kg, Left (Standard Weight Capacity)     | 1        |
| 14b                                   | 001265      | Gas Spring Lock 92mm 20kg, Right (Standard Weight Capacity)    | 1        |
| 14c                                   | 001375      | Gas Spring Lock 92mm 40kg, Left (Heavy Duty)                   | 1        |
| 14d                                   | 001376      | Gas Spring Lock 92mm 40kg, Right (Heavy Duty)                  | 1        |
| 15a                                   | 004551      | Cable, Recline, Short Tilt                                     | 1        |
| 15b                                   | 004552      | Cable, Recline, Tall Tilt                                      | 1        |
| 16                                    | 001117      | Cable Clip 1"  | 1        |
| 17a                                   | 001298      | Cover, Gas Spring, Left  | 1        |
| 17b                                   | 001299      | Cover, Gas Spring, Right                                       | 1        |
| 18                                    | 002801      | Lever Assembly Horizontal Tilt                                 | 1        |
| 19                                    | 001075      | Stop Pin Backrest Tilt   | 2        |
| 20                                    | 102081      | Bushing Flange .319 IDx.394 OD                                 | 2        |
| 21                                    | 101076      | 1/4" E Ring  | 1        |

| Item Number | Part Number | Description                          | Quantity |
|-------------|-------------|--------------------------------------|----------|
| 22          | 101814      | M8 x 25 BHCS Blk Zn                  | 1        |
| 23          | 107139      | M6 x 70, BHCS, P/THD BLZ             | 2        |
| 24          | 101781      | M6 x 50mm Partial Thread BHCS Blk ZC | 2        |
| 25          | 101843      | M5 x 20 SHCS Blk Zn                  | 1        |
| 26          | 100734      | M5 x 16 PHMS ZC                      | 1        |
| 27          | 102328      | M4 x 25 Pan Head Phil Blk Zn         | 1        |
| 28          | 100659      | M8 Nylock Nut Blk Zn                 | 1        |
| 29          | 100658      | M6 Nylock Nut Blk Zn                 | 2        |
| 30          | 102329      | M4 Nylock Nut Blk Zn                 | 1        |
| 31          | 100746      | M6 Flat Washer Blk Zn                | 2        |
| 32          | 101861      | Nylon Washer 5/16 x 1/2 x .03        | 2        |
| 35          | 102904      | Tilt Stop Flip / Liberty / Arc       | 1        |